

145 S. RODEO DRIVE

BEVERLY HILLS, CALIFORNIA



JAY LUCHS

EXECUTIVE VICE PRESIDENT
CA RE LICENSE #01260345

T: 310.407.6585

M: 310.489.5000

JAY.LUCHS@NGKF.COM

WWW.JAYLUCHS.COM

145 S. RODEO DRIVE

BEVERLY HILLS, CALIFORNIA



FREESTANDING SINGLE TENANT BUILDING FOR LEASE

RETAIL/GALLERY/
SHOWROOM/OFFICE

± 3,300 SF ON A ± 7,620 SF
LOT

± 700 SF OF OUTDOOR PATIO
SPACE

8-12 PARKING SPACES IN A
PRIVATE LOT

HIGHLIGHTS INCLUDE A
FRONT GARDEN AREA,
MULTIPLE LARGE PATIOS,
HIGH CEILINGS, LARGE
GLASS WINDOW PANELS,
GRAND SKYLIGHT WITH
NATURAL INTERIOR LIGHTING

145 S. RODEO DRIVE

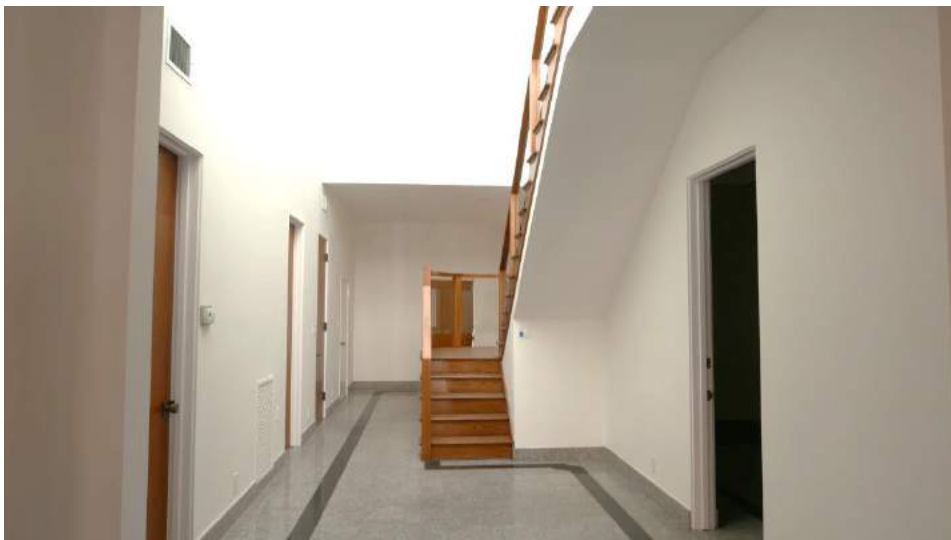
BEVERLY HILLS, CALIFORNIA



LARGE PARKING LOT IN REAR



VIEW FROM SECOND FLOOR



145 S. RODEO DRIVE

BEVERLY HILLS, CALIFORNIA

