

Newmark
Knight Frank



\$5 per RSF Broker Bonus!!!
*minimum qualifications apply



Bohemian Club

Exclusive Outdoor Patio & Building Signage

AVAILABLE FOR LEASE

1900
Ave of the Stars

5,539 RSF Ground Floor Opportunity

Floor to Ceiling Windows

25 Ft. Ceiling Heights

Prominent Building Signage Available

Newly Renovated Lobby

Adjacent to Westfield Century City

BRAD FELD
VICE CHAIRMAN
310.317.7611
brad.feld@ngkf.com
CA RE LICENSE #01011030

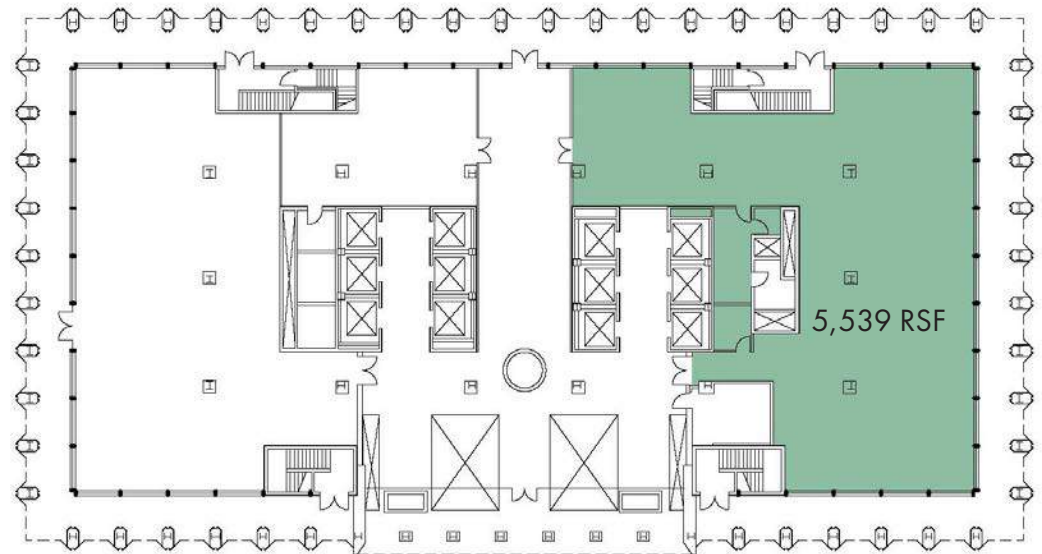
JAY LUCHS
VICE CHAIRMAN
310.407.6585
jay.luchs@ngkf.com
CA RE LICENSE #01260345

ALEX BERGESON
MANAGING DIR.
213.596.2240
alex.bergeson@ngkf.com
CA RE LICENSE #01934076

STEVEN SALAS
SR. MANAGING DIR.
310.407.6569
steven.salas@ngkf.com
CA RE LICENSE #01232955



Rental Rate:	Negotiable
Suite	Suite 150
RSF	± 5,539
Lease Term	5-10 Years
Parking	2.5/1,000 (subterranean) \$230/month unreserved \$380/month reserved
Stories	28
Building Size	± 622,463 RSF



Suite 150 Floor Plan

**Newmark
Knight Frank**



BRAD FELD
VICE CHAIRMAN
310.317.7611

brad.feld@ngkf.com

CA RE LICENSE #01011030

JAY LUCHS
VICE CHAIRMAN
310.407.6585

jay.luchs@ngkf.com

CA RE LICENSE #01260345

STEVEN SALAS
SR. MANAGING DIR.
310.407.6569

steven.salas@ngkf.com

CA RE LICENSE #01232955

ALEX BERGESON
MANAGING DIR.
213.596.2240

alex.bergeson@ngkf.com

CA RE LICENSE #01934076



1900
Avenue of the Stars

WESTFIELD
CENTURY CITY

**Newmark
Knight Frank**



BRAD FELD
VICE CHAIRMAN
310.317.7611
brad.feld@ngkf.com
CA RE LICENSE #01011030

JAY LUCHS
VICE CHAIRMAN
310.407.6585
jay.luchs@ngkf.com
CA RE LICENSE #01260345

STEVEN SALAS
SR. MANAGING DIR.
310.407.6569
steven.salas@ngkf.com
CA RE LICENSE #01232955

ALEX BERGESON
MANAGING DIR.
213.596.2240
alex.bergeson@ngkf.com
CA RE LICENSE #01934076



**Newmark
Knight Frank**



BRAD FELD
VICE CHAIRMAN
310.317.7611

brad.feld@ngkf.com

CA RE LICENSE #01011030

JAY LUCHS
VICE CHAIRMAN
310.407.6585

jay.luchs@ngkf.com

CA RE LICENSE #01260345

STEVEN SALAS
SR. MANAGING DIR.
310.407.6569

steven.salas@ngkf.com

CA RE LICENSE #01232955

ALEX BERGESON
MANAGING DIR.
213.596.2240

alex.bergeson@ngkf.com

CA RE LICENSE #01934076