

Newmark Grubb
Knight Frank



AVAILABLE FOR LEASE

1900

Avenue of the Stars

Ground Floor Opportunity

Floor to Ceiling Windows

25 Ft. Ceiling Heights

Prominent Building Signage Available

Newly Renovated Lobby

Adjacent to Westfield Century City

BRAD FELD

VICE CHAIRMAN

310.317.7611

brad.feld@ngkf.com

CA RE LICENSE #01011030

JAY LUCHS

EXEC. VICE PRESIDENT

310.407.6585

jay.luchs@ngkf.com

CA RE LICENSE #01260345

STEVEN SALAS

SR. MANAGING DIR.

310.407.6569

steven.salas@ngkf.com

CA RE LICENSE #01232955



Rental Rate: \$5.00 per RSF, FSG

Suite Suite 150

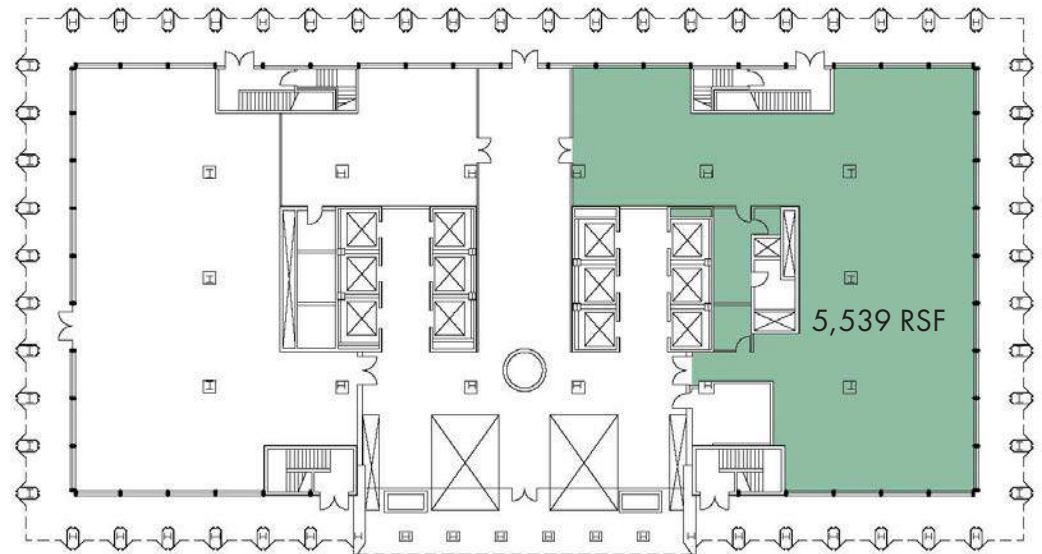
RSF ± 5,539

Lease Term 5-10 Years

Parking 2.5/1,000 (subterranean)
 \$230/month unreserved
 \$380/month reserved

Stories 28

Building Size ± 622,463 RSF



Suite 150 Floor Plan

Newmark Grubb
 Knight Frank



BRAD FELD

VICE CHAIRMAN

310.317.7611

brad.feld@ngkf.com

CA RE LICENSE #01011030

JAY LUCHS

EXECUTIVE VICE PRESIDENT

310.407.6585

jay.luchs@ngkf.com

CA RE LICENSE #01260345

STEVEN SALAS

SR. MANAGING DIRECTOR

310.407.6569

steven.salas@ngkf.com

CA RE LICENSE #01232955



1900
Avenue of the Stars

WESTFIELD
CENTURY CITY

**Newmark Grubb
Knight Frank**



BRAD FELD
VICE CHAIRMAN
310.317.7611
brad.feld@ngkf.com
CA RE LICENSE #01011030

JAY LUCHS
EXECUTIVE VICE PRESIDENT
310.407.6585
jay.luchs@ngkf.com
CA RE LICENSE #01260345

STEVEN SALAS
SR. MANAGING DIRECTOR
310.407.6569
steven.salas@ngkf.com
CA RE LICENSE #01232955



Newmark Grubb
Knight Frank



BRAD FELD
VICE CHAIRMAN
310.317.7611
brad.feld@ngkf.com
CA RE LICENSE #01011030

JAY LUCHS
EXECUTIVE VICE PRESIDENT
310.407.6585
jay.luchs@ngkf.com
CA RE LICENSE #01260345

STEVEN SALAS
SR. MANAGING DIRECTOR
310.407.6569
steven.salas@ngkf.com
CA RE LICENSE #01232955