

24903 PACIFIC COAST HIGHWAY

MALIBU, CALIFORNIA

RETAIL / OFFICE SPACE AVAILABLE



For Lease

Jay Luchs
310.407.6585
Genny Chang
310.407.6588

JAY LUCHS

EXECUTIVE VICE PRESIDENT
CA RE LICENSE: #01260345
T: 310.407.6585
M: 310.489.5000
Jay.Luchs@ngkf.com

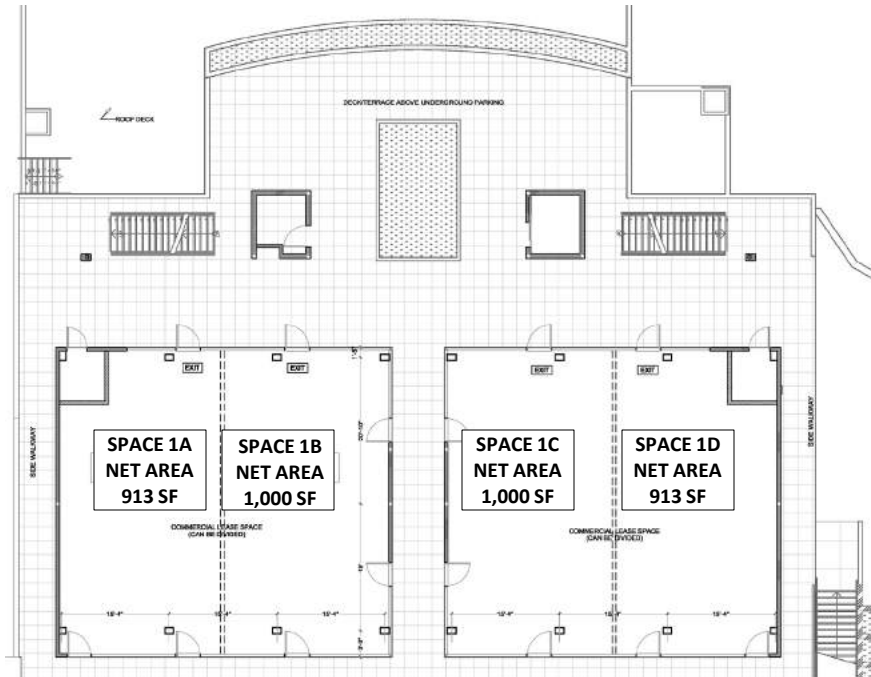
GENNY CHANG

DIRECTOR
CA RE LICENSE: #01467375
T: 310.407.6588
M: 310.801.2730
Genny.Chang@ngkf.com

24903 PACIFIC COAST HIGHWAY

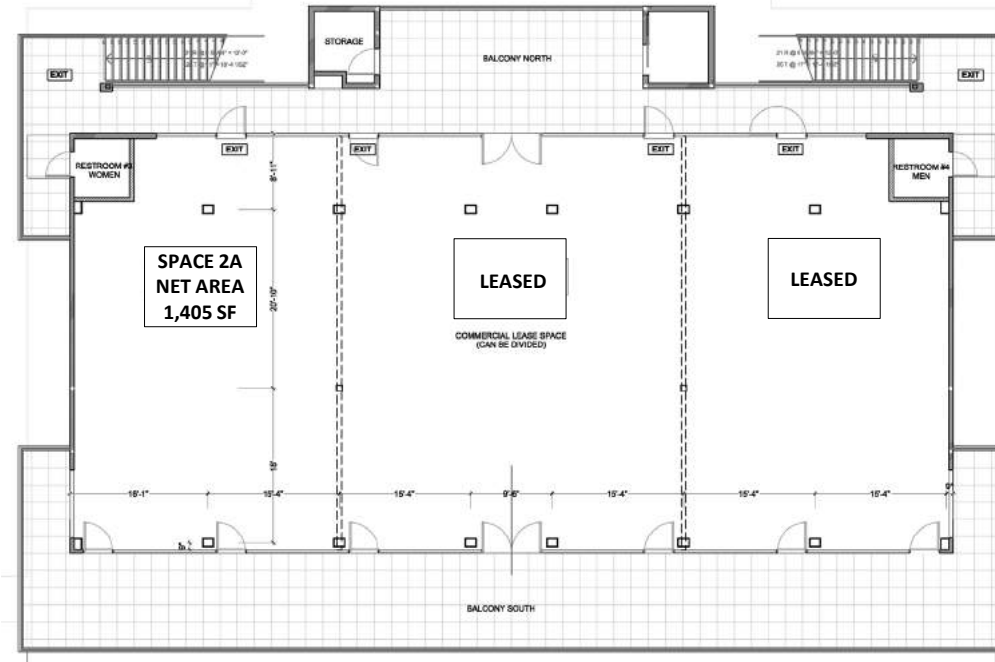
MALIBU, CALIFORNIA

RETAIL/OFFICE SPACE AVAILABLE



FIRST FLOOR

3,826 SF available (divisible)
Rent available upon request
Parking garage



SECOND FLOOR

4,721 SF available (divisible)
Rent available upon request
Parking garage
Ocean views

JAY LUCHS

EXECUTIVE VICE PRESIDENT
CA RE LICENSE: #01260345
T: 310.407.6585
M: 310.489.5000
Jay.Luchs@ngkf.com

GENNY CHANG

DIRECTOR
CA RE LICENSE: #01467375
T: 310.407.6588
M: 310.801.2730
Genny.Chang@ngkf.com

24903 PACIFIC COAST HIGHWAY

MALIBU, CALIFORNIA

2ND FLOOR BALCONY




OCEAN VIEWS



24903 PACIFIC COAST HIGHWAY

MALIBU, CALIFORNIA



24903
PACIFIC
COAST
HWY



JAY LUCHS

EXECUTIVE VICE PRESIDENT
CA RE LICENSE: #01260345
T: 310.407.6585
M: 310.489.5000
Jay.Luchs@ngkf.com

GENNY CHANG

DIRECTOR
CA RE LICENSE: #01467375
T: 310.407.6588
M: 310.801.2730
Genny.Chang@ngkf.com

WWW.JAYLUCHS.COM