

3223 M STREET, GEORGETOWN

WASHINGTON DC

PRIME RETAIL SPACE AVAILABLE
IN THE HEART OF GEORGETOWN



FOR MORE INFORMATION PLEASE CONTACT:

 **Newmark
Knight Frank**

JAY LUCHS
VICE CHAIRMAN
310.407.6585 Jay.Luchs@ngkf.com

WWW.JAYLUCHS.COM

3223 M STREET, GEORGETOWN

WASHINGTON DC



3223 M STREET

GROUND: 1,940 SF

SECOND: 1,079 SF

THIRD: 1,079 SF

TOTAL: 4,098 SF

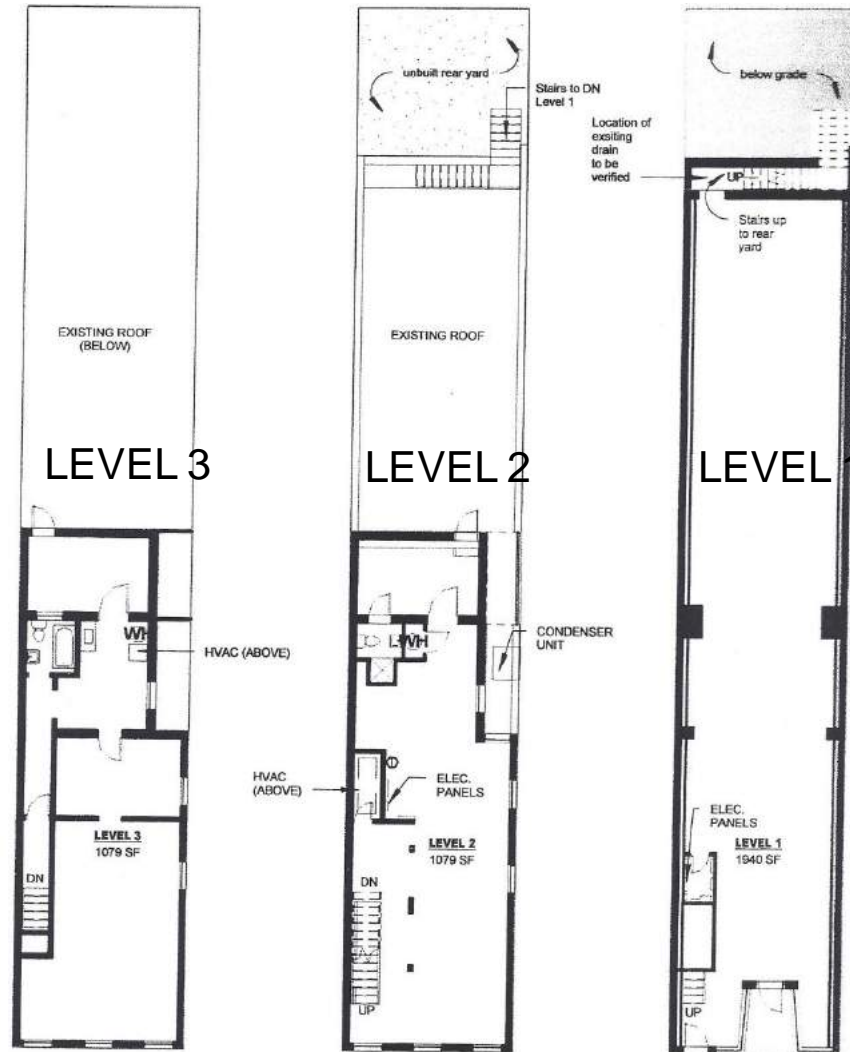
***SPACE WILL BE DELIVERED IN VANILLA SHELL CONDITION**

FOR MORE INFORMATION PLEASE CONTACT:

 **Newmark
Knight Frank**

JAY LUCHS
VICE CHAIRMAN
310.407.6585 Jay.Luchs@ngkf.com

WWW.JAYLUCHS.COM



FOR MORE INFORMATION PLEASE CONTACT:

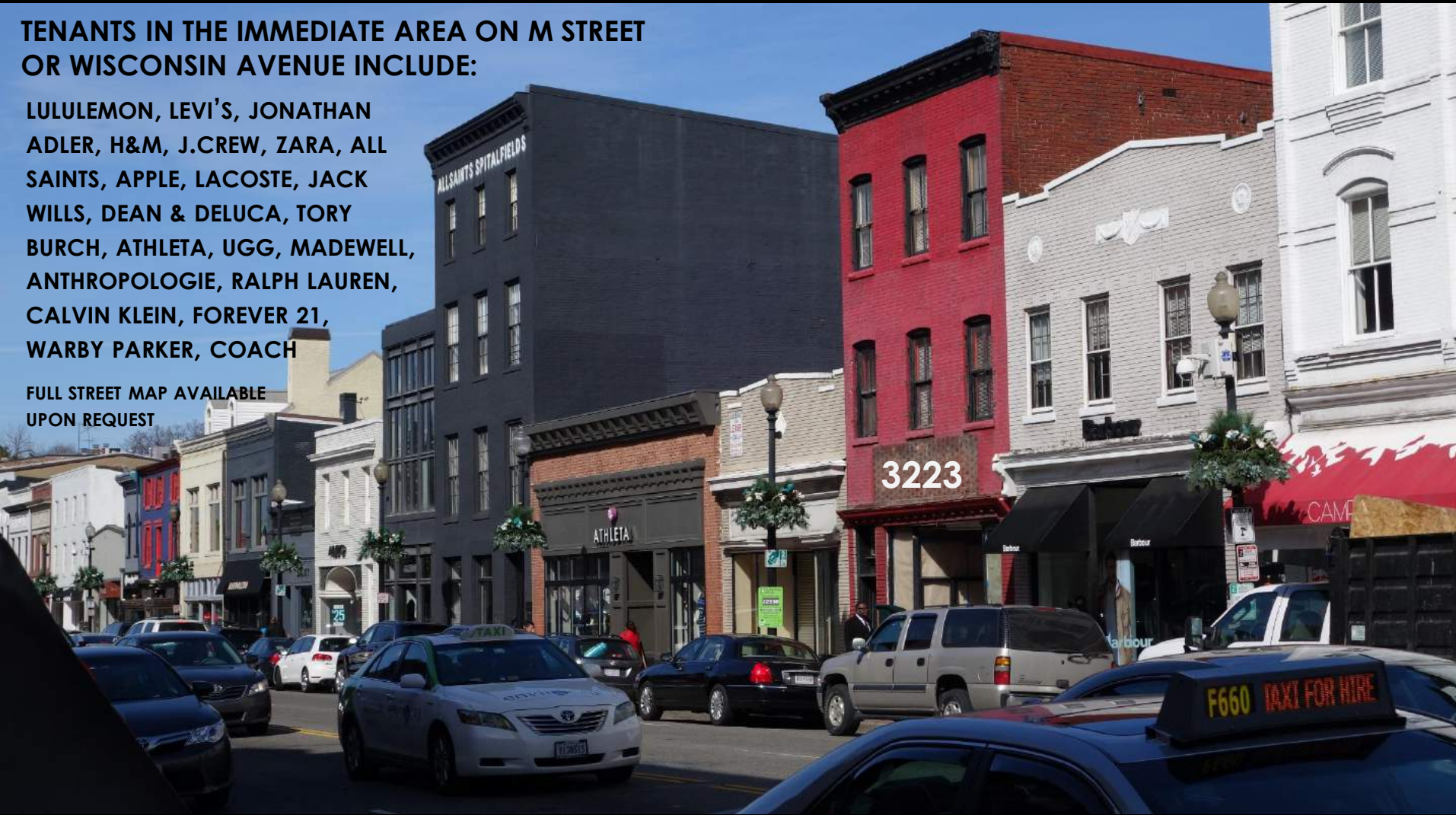
3223 M STREET, GEORGETOWN

WASHINGTON DC

TENANTS IN THE IMMEDIATE AREA ON M STREET
OR WISCONSIN AVENUE INCLUDE:

LULULEMON, LEVI'S, JONATHAN
ADLER, H&M, J.CREW, ZARA, ALL
SAINTS, APPLE, LACOSTE, JACK
WILLS, DEAN & DELUCA, TORY
BURCH, ATHLETA, UGG, MADEWELL,
ANTHROPOLOGIE, RALPH LAUREN,
CALVIN KLEIN, FOREVER 21,
WARBY PARKER, COACH

FULL STREET MAP AVAILABLE
UPON REQUEST



FOR MORE INFORMATION PLEASE CONTACT:

 **Newmark
Knight Frank**

JAY LUCHS
VICE CHAIRMAN
310.407.6585 Jay.Luchs@ngkf.com

WWW.JAYLUCHS.COM