

# WHERE THE HIGH LINE MEETS THE MEATPACKING DISTRICT.

## 450 W 14

### 450 WEST 14TH STREET

- PERFECTLY SITUATED AT THE WEST 14TH STREET ENTRANCE TO THE HIGHLINE WITH DIRECT ACCESS TO THE PARK'S MORE THAN 4.4 MILLION ANNUAL VISITORS.
- ONE OF A KIND INTERIOR FEATURING 23 FOOT CEILINGS, GENEROUS COLUMN SPACING AND A GENUINE, HISTORIC MEATPACKING FEEL.
- SURROUNDED ON ALL SIDES BY SOME OF THE HOTTEST RETAILERS, HOTELS AND RESTAURANTS IN NEW YORK CITY.

### NEIGHBORING TENANTS

patagonia

BOSS



Alice  
and  
Olivia

UGG

Jeffrey

DF

Joie

lululemon  athletica

LA PERLA

The Kooples

### RETAIL SPACE FOR LEASE

GROUND FLOOR	7,636 SF
LOWER LEVEL	4,308 SF
TOTAL	11,944 SF

TERM  
LONG-TERM

POSSESSION  
IMMEDIATE

FRONTAGE  
70 FEET ON WEST  
14TH STREET

CEILINGS  
23-FOOT CEILING HEIGHT

### EXCLUSIVE AGENTS:

**MATTHEW S. KRELL** SENIOR MANAGING DIRECTOR  
212.372.2254 MKRELL@NGKF.COM

**MICHAEL VERNOIA** ASSOCIATE  
212.372.0740 MVERNOIA@NGKF.COM

**JAY LUCHS** EXECUTIVE VICE PRESIDENT  
917.488.8905 JAY.LUCHS@NGKF.COM

**JESSICA FARROW** ASSOCIATE  
212.372.0758 JFARROW@NGKF.COM

**Newmark Grubb  
Knight Frank**  
Retail

[www.ngkf.com/retail](http://www.ngkf.com/retail)







**450 W 14**

**WHERE THE HIGH LINE MEETS  
THE MEATPACKING DISTRICT.**



**23 FOOT CEILINGS**

**EXCLUSIVE AGENTS:**

**MATTHEW S. KRELL** SENIOR MANAGING DIRECTOR  
212.372.2254 MKRELL@NGKF.COM

**MICHAEL VERNOIA** ASSOCIATE  
212.372.0740 MVERNOIA@NGKF.COM

**JAY LUCHS** EXECUTIVE VICE PRESIDENT  
917.488.8905 JAY.LUCHS@NGKF.COM

**JESSICA FARROW** ASSOCIATE  
212.372.0758 JFARROW@NGKF.COM

**Newmark Grubb  
Knight Frank**  
Retail

[www.ngkf.com/retail](http://www.ngkf.com/retail)

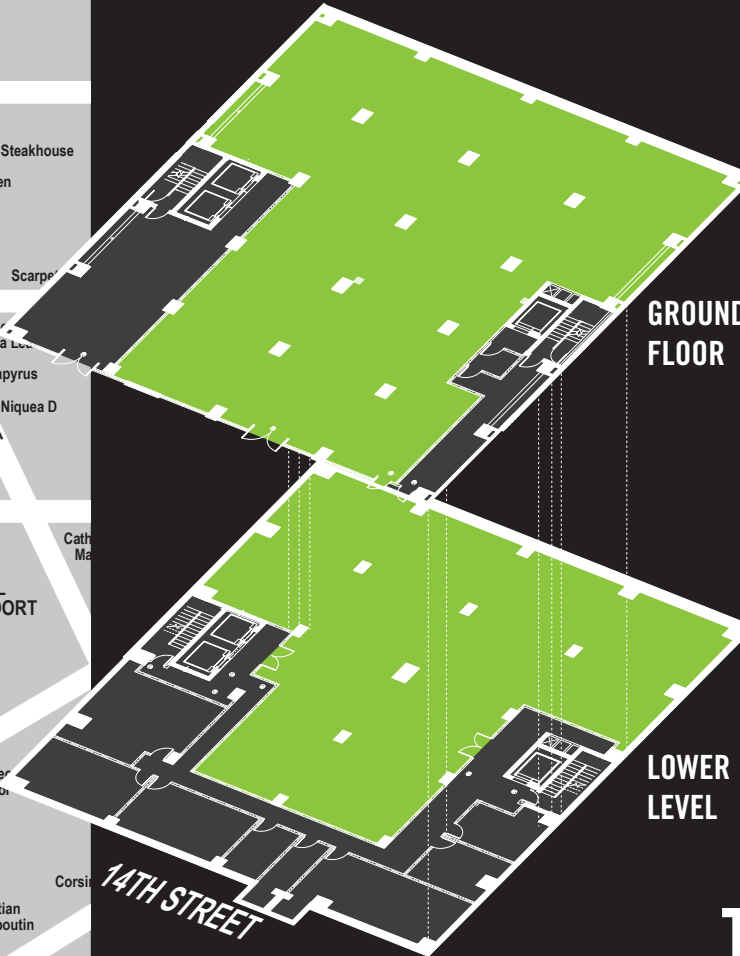
Procuring broker shall only be entitled to a commission, calculated in accordance with the rates approved by our principal only if such procuring broker executes a brokerage agreement acceptable to us and our principal and the conditions as set forth in the brokerage agreement are fully and unconditionally satisfied. Although all information furnished regarding property for sale, rental, or financing is from sources deemed reliable, such information has not been verified and no express representation is made nor is any to be implied as to the accuracy thereof and it is submitted subject to errors, omissions, change of price, rental or other conditions, prior sale, lease or financing, or withdrawal without notice and to any special conditions imposed by our principal.



# 450 W 14

**GROUND FLOOR**  
7,636 SF

**LOWER LEVEL**  
4,308 SF



**GROUND FLOOR**

**LOWER LEVEL**

**WHERE THE  
HIGH LINE MEETS  
THE MEATPACKING  
DISTRICT.**

## EXCLUSIVE AGENTS:

**MATTHEW S. KRELL** SENIOR MANAGING DIRECTOR  
212.372.2254 MKRELL@NGKF.COM

**MICHAEL VERNIOA** ASSOCIATE  
212.372.0740 MVERNOIA@NGKF.COM

**JAY LUCHS** EXECUTIVE VICE PRESIDENT  
917.488.8905 JAY.LUCHS@NGKF.COM

**JESSICA FARROW** ASSOCIATE  
212.372.0758 JFARROW@NGKF.COM

**Newmark Grubb  
Knight Frank**  
Retail

[www.ngkf.com/retail](http://www.ngkf.com/retail)

