



47

# NORTH RODEO DRIVE

Newmark Grubb  
Knight Frank

## Available Space

Ground: 1,450 SF

2nd: 1,250 SF

## Rates

Ground: \$25 PSF/Month + NNN

2nd: \$7 PSF/Month + NNN

## Features

- Kitchen, office, storage, cash wrap area, reclaimed hardwood floors, antique light fixtures
- Triple side visibility on S Santa Monica Blvd, Rodeo Dr, and N Santa Monica Blvd

## CONTACT:

### JAY LUCHS

Executive Vice President

310.407.6585

[jay.luchs@ngkf.com](mailto:jay.luchs@ngkf.com)

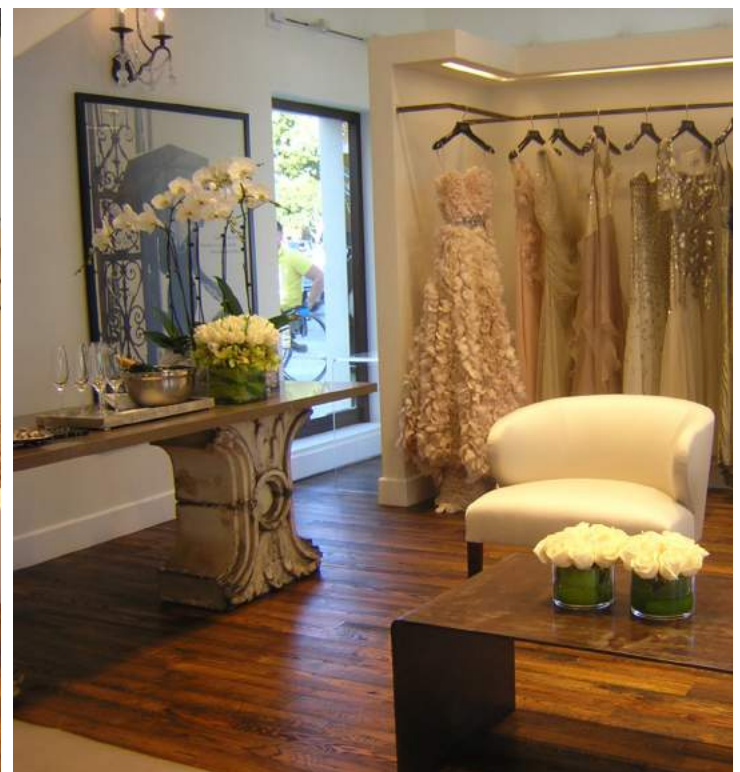
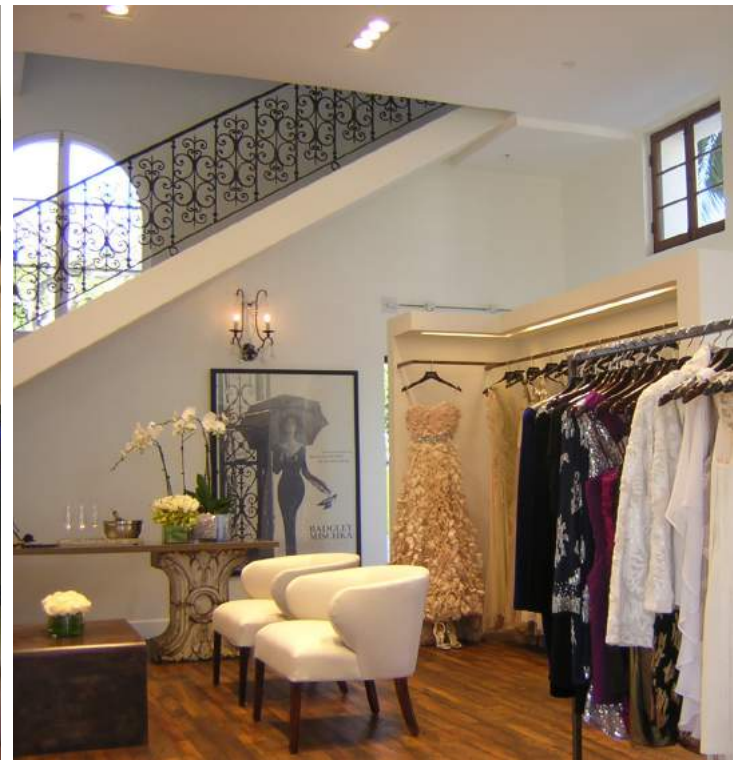
CA RE Lic #01260345

[www.jayluchs.com](http://www.jayluchs.com)

### NEWMARK GRUBB KNIGHT FRANK OFFICE:

1875 CENTURY PARK EAST | SUITE 1380

LOS ANGELES | CA | 90067



**JAY LUCHS**

Executive Vice President

310.407.6585

[jay.luchs@ngkf.com](mailto:jay.luchs@ngkf.com)

CA RE Lic #01260345

[www.jayluchs.com](http://www.jayluchs.com)

