

633 N. LA PEER DRIVE

Retail space available



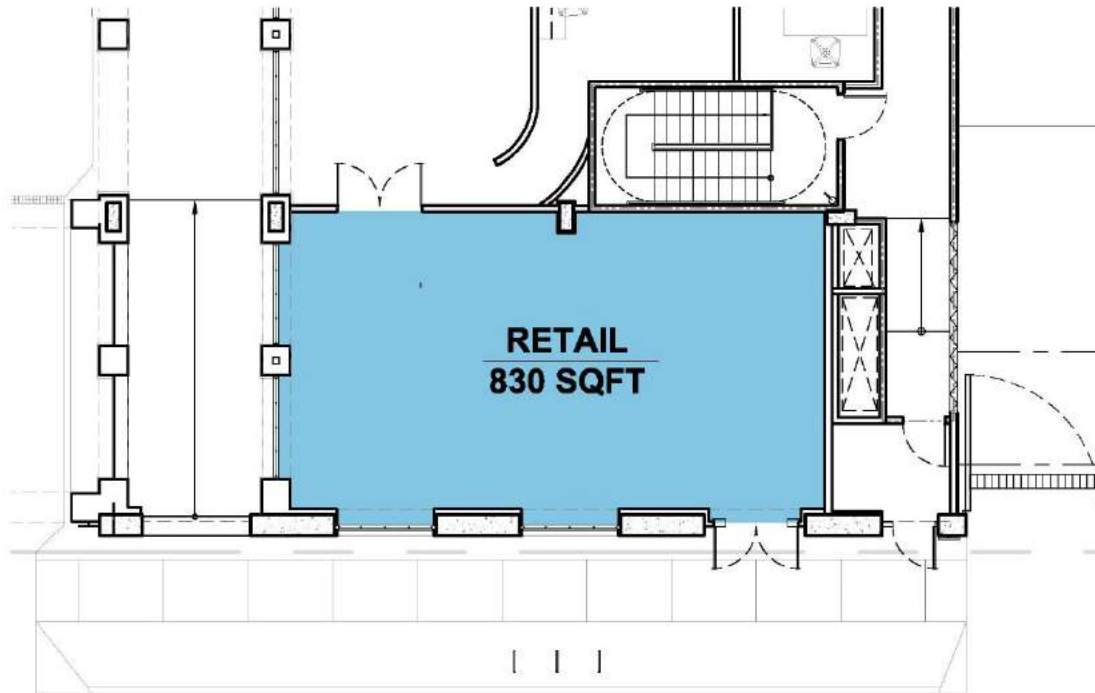
 **Newmark Grubb
Knight Frank**

JAY LUCHS
EXECUTIVE VICE PRESIDENT
CA RE LICENSE #01260345

T: 310.407.6585
M: 310.489.5000
JAY.LUCHS@NGKF.COM

www.jayluchs.com

633 N. LA PEER DRIVE



RETAIL OPPORTUNITY INSIDE THE NEW LA PEER HOTEL

APPROXIMATELY 830 SF

\$10 PSF PER MONTH NNN
\$120 PSF PER ANNUM NNN

HOTEL WILL OPEN MID-MAY 2017