

# 655 N. LA PEER DRIVE

## CREATIVE OFFICE AVAILABLE



# 655 N. LA PEER DRIVE



## **TWO-STORY CREATIVE OFFICE** *LOCATED IN WEST HOLLYWOOD'S ART & DESIGN DISTRICT*

5,427 SF GROUND FLOOR  
2,110 SF SECOND FLOOR  
7,537 SF TOTAL

\$6 PSF PER MONTH NNN  
NNN: \$5,600 PER MONTH

ON-SITE PARKING

OUTDOOR PATIO AREA

EXCELLENT NATURAL  
LIGHTING



# 655 N. LA PEER DRIVE

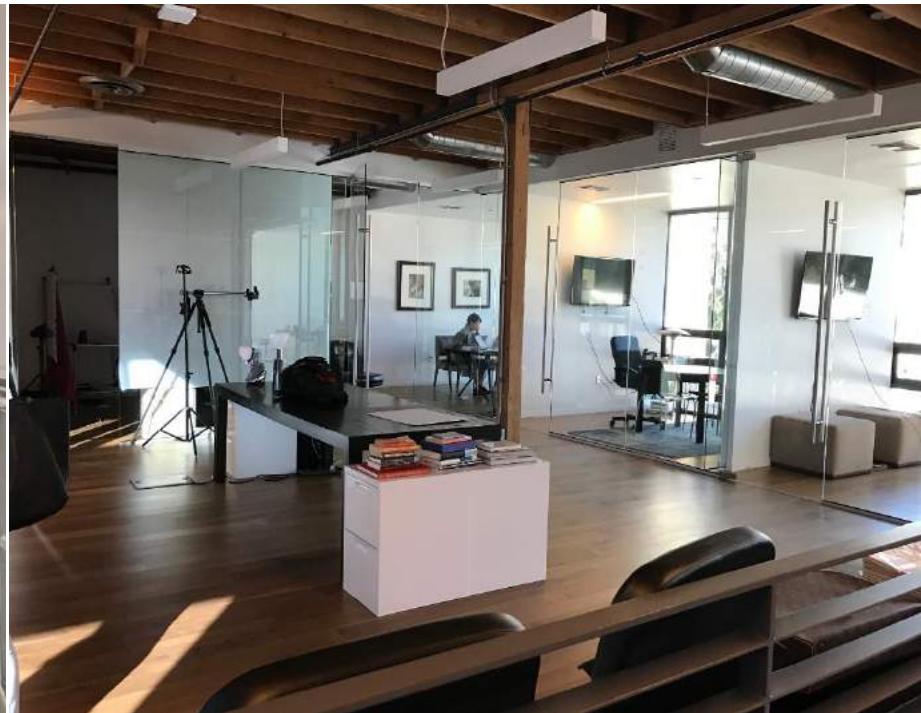
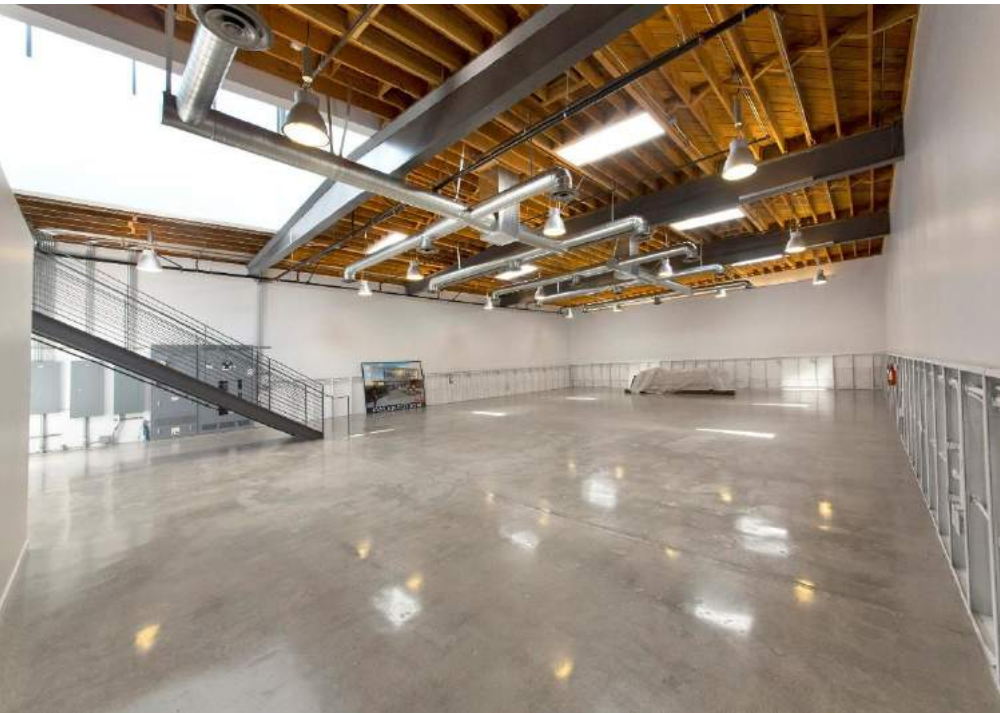


# 655 N. LA PEER DRIVE

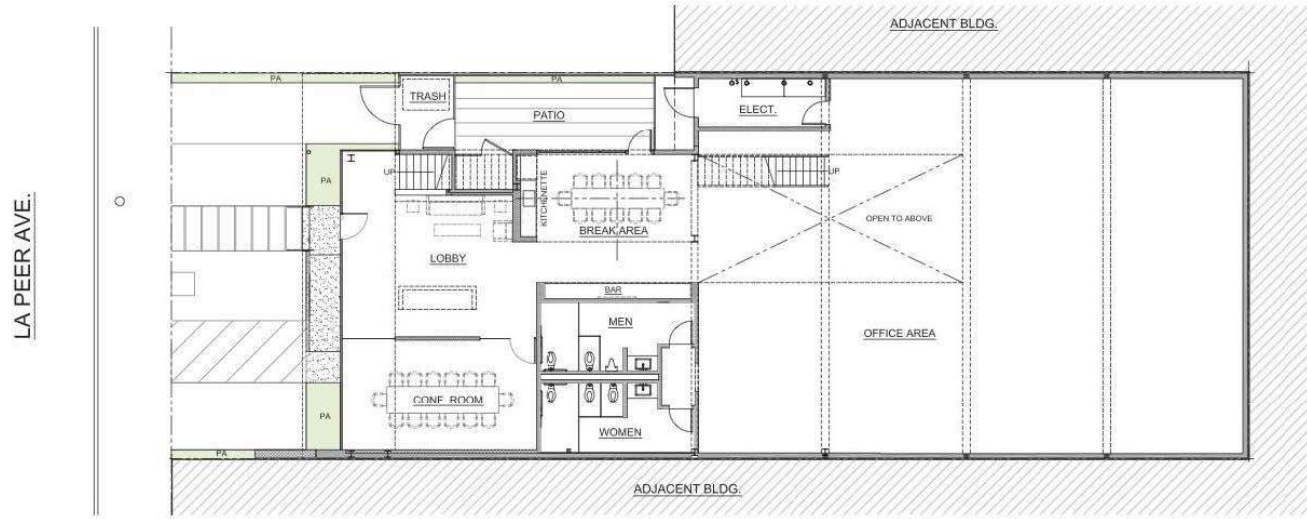




# 655 N. LA PEER DRIVE



# 655 N. LA PEER DRIVE



GROUND FLOOR

SECOND FLOOR

