



8730 SUNSET

OFFICE SPACE FOR LEASE

JAY LUCHS | VICE CHAIRMAN

CA RE LIC: 01260345

1875 CENTURY PARK EAST SUITE 1380, LA 90067

T: 310.407.6585 | E: JAY.LUCHS@NGKF.COM

WWW.JAYLUCHS.COM



BUILDING SUMMARY

8730 SUNSET BLVD. FOURTH FLOOR
WEST HOLLYWOOD, CA 90069

CENTRALLY LOCATED ON **SUNSET PLAZA** **IN THE HEART OF THE FAMED SUNSET STRIP.**

For decades it has been a premier choice for clients in Los Angeles' business, entertainment, and technology sectors. Sunset Towers' strategic location provides quick, convenient access to Beverly Hills, Century City, and Santa Monica.

The iconic 7-story building presents tenants with breathtaking balcony views of Los Angeles. Immediately surrounding the building are some of the city's finest outdoor dining venues, luxurious hotels, and high-end boutiques. Recent renovations include interior and exterior upgrades as well as electrical and communication infrastructure updates to accommodate emergent technologies. Please visit our website for specifics.

STRUCTURE AND AMENITY DETAILS:

- » Parking Ratio: 3.5:1,000
- » Security: 24-hour on premises security and surveillance .
- » Amenities include private screening room with theater grade projection and sound.
- » Walking distance from the Sunset Strip's restaurants, boutiques and entertainment.



JAY LUCHS | VICE CHAIRMAN
CA RE LIC: 01260345
1875 CENTURY PARK EAST SUITE 1380, LA 90067
T: 310.407.6585 | E: JAY.LUCHS@NGKF.COM
WWW.JAYLUCHS.COM



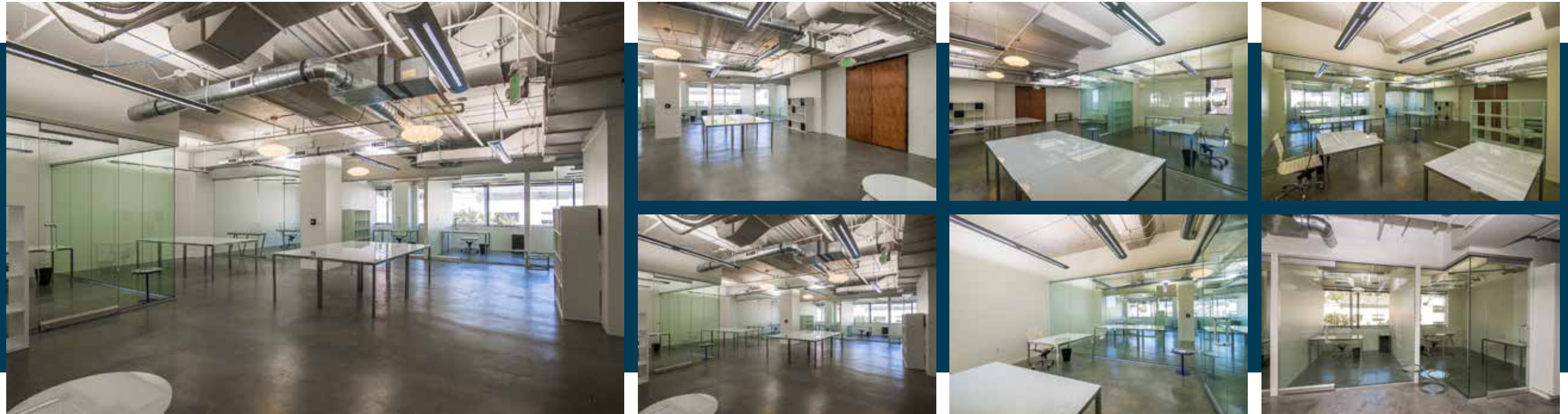
8730 SUNSET

AVAILABLE UNITS

SUITE PRICING:
\$5.00 PSF per month
2,067 SF

- Suite features:**
- » Double door entry
 - » Open concept floor plan + glass walled executive offices
 - » Modern feel with polished concrete flooring and exposed ceilings
 - » Sunset Strip views
 - » Micro-kitchen

SUITE 240



SUITE 250

SUITE PRICING:
\$4.75 PSF per month
576 SF

- Suite features:**
- » Private reception area with large windows and natural light
 - » Open concept floor plan
 - » Sunset Strip views

JAY LUCHS | VICE CHAIRMAN
CA RE LIC: 01260345
1875 CENTURY PARK EAST SUITE 1380, LA 90067
T: 310.407.6585 | E: JAY.LUCHS@NGKF.COM
WWW.JAYLUCHS.COM



8730 SUNSET

AVAILABLE UNITS

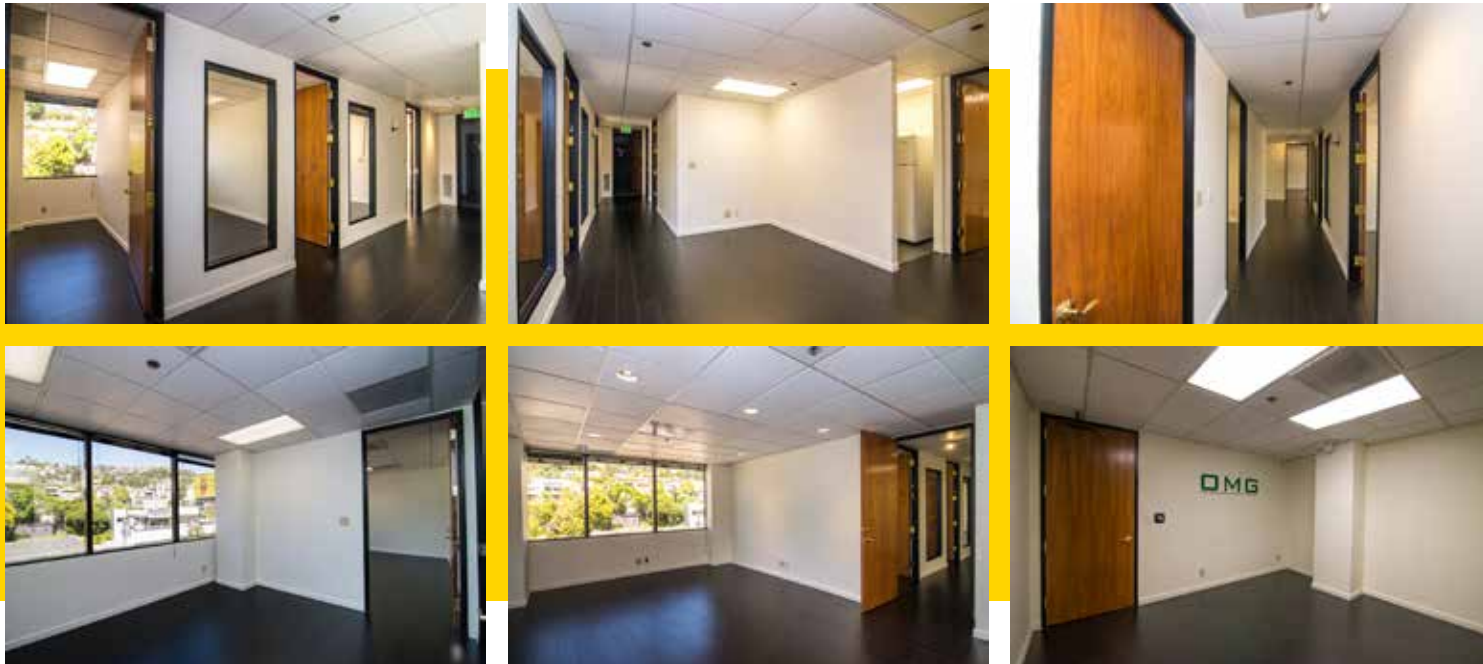
SUITE PRICING:

\$4.85 PSF per month
1,088 SF

Suite features:

- » Executive offices with views of the famous Sunset Plaza.
- » Reception area and staff area.

SUITE 270



SUITE 440

SUITE PRICING:

\$5.00 PSF per month
2,276 SF

Suite features:

- » Double door entrance with private reception room.
- » Hardwood floors
- » Sunset Strip and West Hollywood Hills views
- » Micro-kitchen

JAY LUCHS | VICE CHAIRMAN

CA RE LIC: 01260345

1875 CENTURY PARK EAST SUITE 1380, LA 90067

T: 310.407.6585 | E: JAY.LUCHS@NGKF.COM

WWW.JAYLUCHS.COM



**Newmark
 Knight Frank**

8730 SUNSET

AVAILABLE UNITS

SUITE PRICING:

\$5.15 PSF per month
5,526 SF

Suite features:

- » Prime office space featuring a number of executive offices and open floor.
- » Magnificent 360 views of Los Angeles and Sunset Blvd.
- » An exclusive elevator lobby entry
- » Large conference room
- » Restrooms included within suite

SUITE 600E



PENTHOUSE

SUITE PRICING:

\$5.75 PSF per month
5,486 SF

Suite features:

- » Exclusive elevator lobby entry
- » Reception area
- » Polished concrete floors
- » Stunning views
- » Private lounge area
- » Large conference room
- » Kitchen area



JAY LUCHS | VICE CHAIRMAN

CA RE LIC: 01260345

1875 CENTURY PARK EAST SUITE 1380, LA 90067

T: 310.407.6585 | E: JAY.LUCHS@NGKF.COM

WWW.JAYLUCHS.COM



**Newmark
 Knight Frank**

8730 SUNSET

AVAILABLE UNITS

SUITE PRICING:

\$6.50 PSF per month
2,853 SF

Suite features:

- » Contiguous to Penthouse Office Suite
- » Newly remodeled with open concept design
- » Wonderful natural light throughout
- » One bedroom with stunning views
- » Two bathrooms
- » Two walk-in closets
- » Full kitchen
- » Private balcony access
- » Laundry in unit

PH CONDO



JAY LUCHS | VICE CHAIRMAN

CA RE LIC: 01260345

1875 CENTURY PARK EAST SUITE 1380, LA 90067

T: 310.407.6585 | E: JAY.LUCHS@NGKF.COM

WWW.JAYLUCHS.COM



**Newmark
Knight Frank**

8730 SUNSET