

# 9680 WILSHIRE BLVD.

BEVERLY HILLS, CALIFORNIA



**Newmark Grubb  
Knight Frank**

**JAY LUCHS**  
EXECUTIVE VICE PRESIDENT  
CA RE LICENSE #01260345

T: 310.407.6585  
M: 310.489.5000  
JAY.LUCHS@NGKF.COM

[www.jayluchs.com](http://www.jayluchs.com)

# 9680 WILSHIRE BLVD.

BEVERLY HILLS, CALIFORNIA



## RETAIL/RESTAURANT

### PREMISES

9680 Wilshire Boulevard

### SIZE

13,000 SF on the ground floor  
(divisible)

### PARKING

Valet

### RENT

Available upon request

9680 Wilshire Boulevard is located Saks Fifth Avenue and Neiman Marcus, just steps from Rodeo Drive, Barneys, Neiman Marcus, Burberry, Niketown, St. John and Equinox Gym. There are many world renowned restaurants and high end retail shops in the immediate vicinity.

The property has 18ft arched ceilings and incredible frontage on Wilshire Boulevard, as well as a loading dock and great signage opportunity. The property could be used as a restaurant.



# 9680 WILSHIRE BLVD.

BEVERLY HILLS, CALIFORNIA



**Newmark Grubb  
Knight Frank**

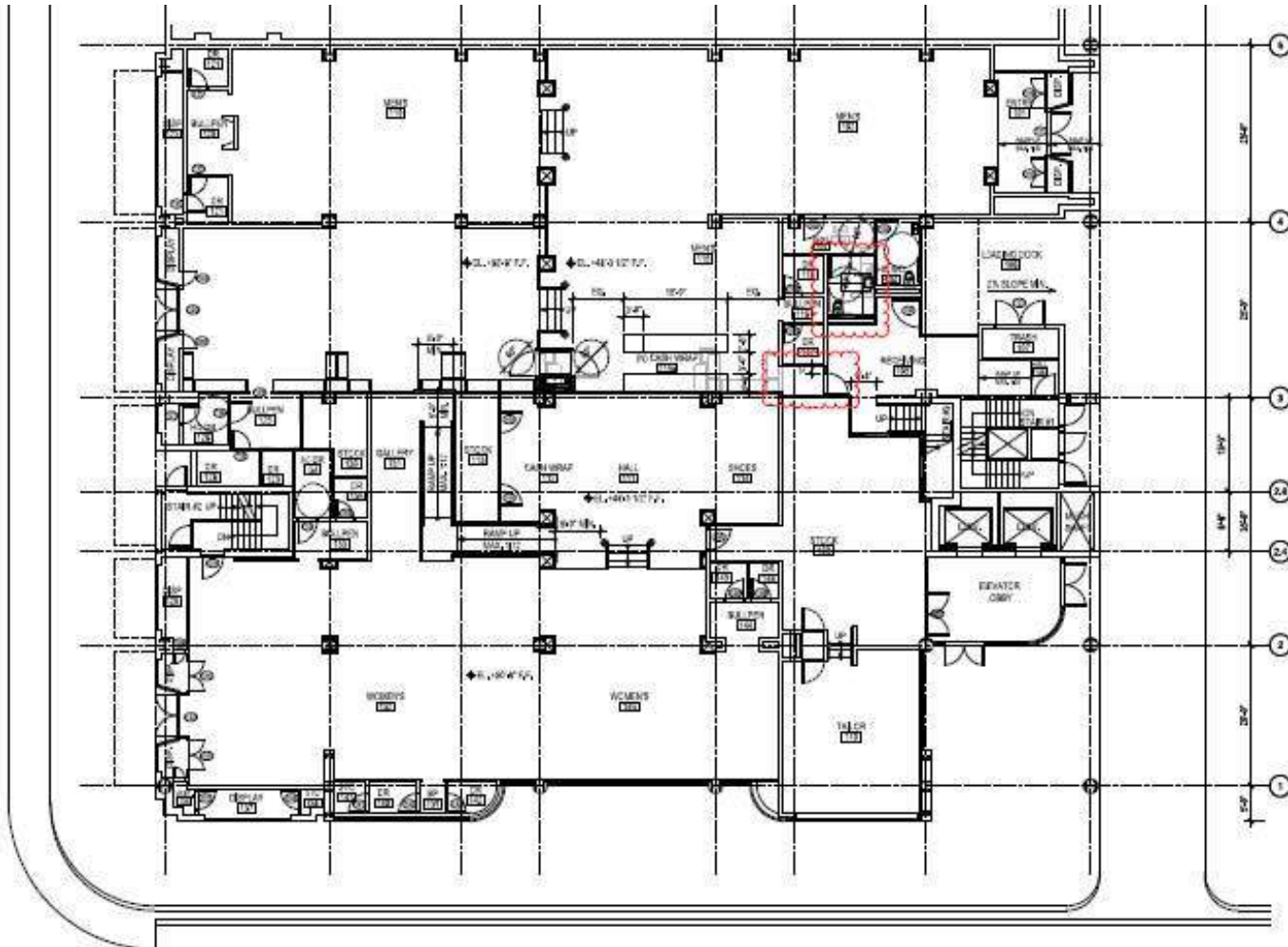
**JAY LUCHS**  
EXECUTIVE VICE PRESIDENT  
CA RE LICENSE #01260345

T: 310.407.6585  
M: 310.489.5000  
JAY.LUCHS@NGKF.COM

[www.jayluchs.com](http://www.jayluchs.com)

# 9680 WILSHIRE BLVD.

BEVERLY HILLS, CALIFORNIA



**Newmark Grubb  
Knight Frank**

**JAY LUCHS**  
EXECUTIVE VICE PRESIDENT  
CA RE LICENSE #01260345

T: 310.407.6585  
M: 310.489.5000  
JAY.LUCHS@NGKF.COM

[www.jayluchs.com](http://www.jayluchs.com)