

# 100 N. LA CIENEGA BOULEVARD

LOS ANGELES, CALIFORNIA 90048



**JAY LUCHS**  
**CARLY GELLER**

Vice Chairman  
Director - Jay Luchs Group

310-407-6585  
310-593-0760

[jay.luchs@nrmk.com](mailto:jay.luchs@nrmk.com)  
[carly.geller@nrmk.com](mailto:carly.geller@nrmk.com)

CA RE Lic. #01260345  
CA RE Lic. #02153582

**JAYLUCHS.COM**  
**NEWMARK**





## ADDRESS

100 N. La Cienega Boulevard  
Los Angeles, CA 90048

## USE

Retail

## AVAILABLE SPACE

### Level 1

D103 (incl Patio): ±1,615 SF - ±11,349 SF  
B111-114: ±9,130 SF\*

### Level 2

B231-B233: ±8,279 SF\*

\*Spaces can be combined for a total of ±17,409 SF

## RENT

Available upon Request

## PARKING

100 surface spaces  
600 covered spaces

## HIGHLIGHTS

- Located on the busy corner of La Cienega Boulevard and 3rd Street
- Directly across the street from the Beverly Center and Caruso's future mixed-use development
- Co-tenants include: Target, Nordstrom Rack, Saks Off Fifth, T.J. Maxx, CVS, Jamba Juice, Johnny Rockets, Old Navy, and more

**JAY LUCHS**

Vice Chairman

310-407-6585

[jay.luchs@nrmk.com](mailto:jay.luchs@nrmk.com)

CA RE Lic. #01260345

**JAYLUCHS.COM**

**CARLY GELLER**

Director - Jay Luchs Group

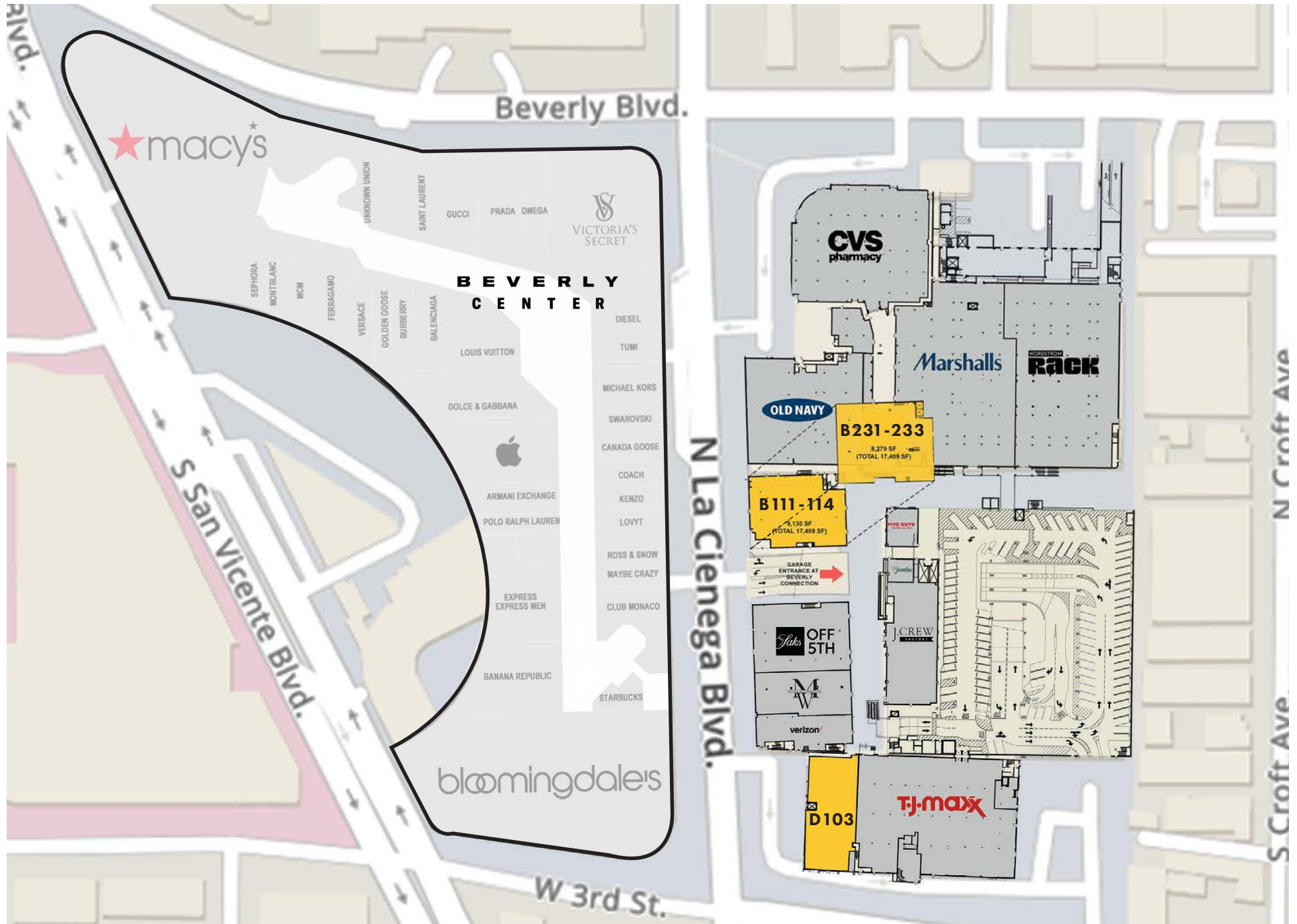
310-593-0760

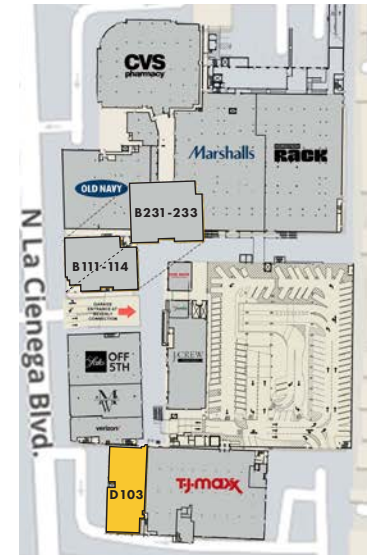
[carly.geller@nrmk.com](mailto:carly.geller@nrmk.com)

CA RE Lic. #02153582

**NEWMARK**







### D103

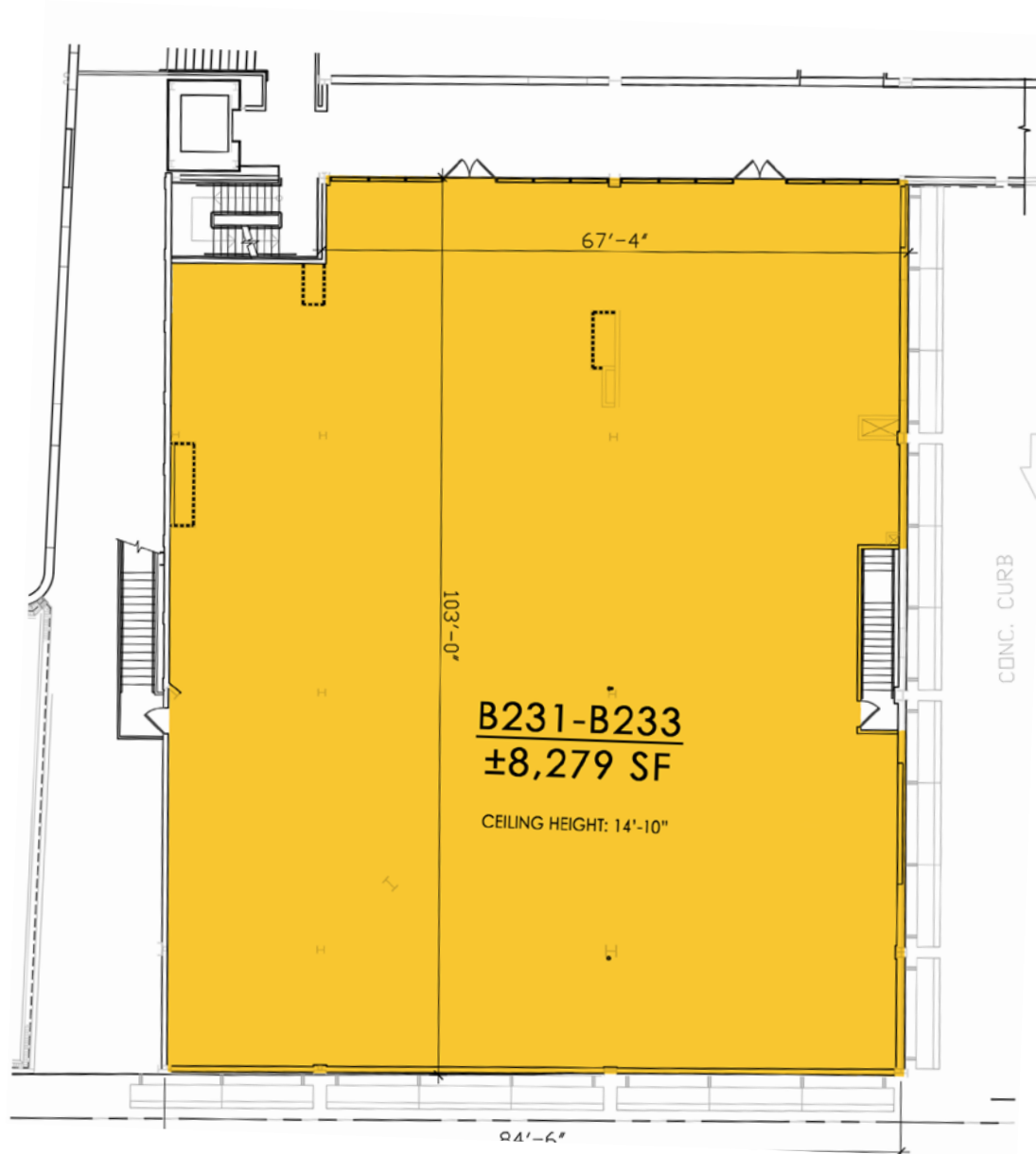
- QSR-1 (incl patio): ±2,623 SF
- QSR-2 (incl patio): ±2,114 SF
- QSR-3 (incl patio): ±1,615 SF
- QSR-4 (incl patio): ±2,655 SF
- QSR-5 (incl patio): ±2,342 SF

\*Spaces can be combined for a total of ±11,349 SF (including patio)

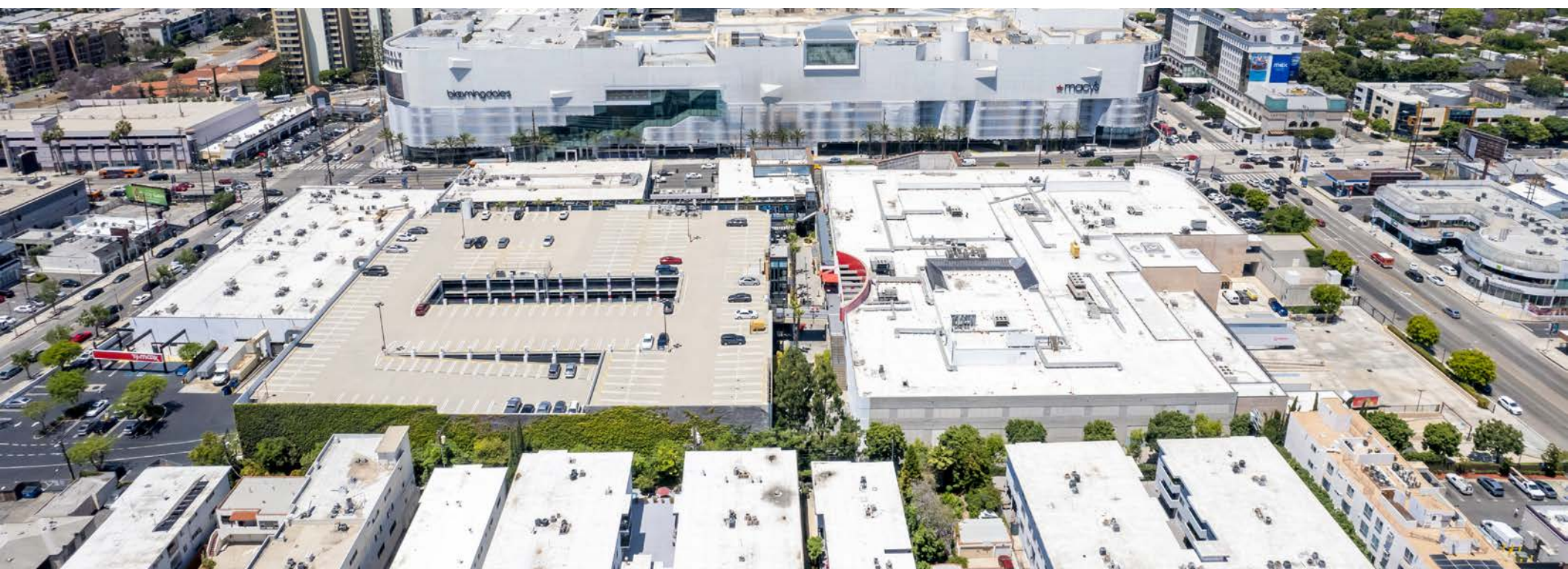












**JAY LUCHS**  
**CARLY GELLER**

Vice Chairman  
Director - Jay Luchs Group

310-407-6585  
310-593-0760

jay.luchs@nrmk.com  
carly.geller@nrmk.com

CA RE Lic. #01260345  
CA RE Lic. #02153582

**JAYLUCHS.COM**  
**NEWMARK**



**8500 Burton.** A stunning luxury apartment landmark built by developer Rick Caruso. Features 87 one and two bedroom apartments with private balconies, floor-to-ceiling windows, stunning views, and luxurious amenities. Ground floor amenities include Trader Joe's and Italian restaurant Emilia.



**333 La Cienega,** by innovative developer Rick Caruso, is a mixed-use, environmentally sustainable residential and transit oriented

building destined to set a new standard of timeless excellence and become a new Los Angeles landmark. This project also includes a wide array of community benefits that will transform the outdated former Loehmann's site into a central gathering place for residents, neighbors and visitors to enhance the entire neighborhood. Located at the gateway to Beverly Hills, at the intersection of Burton Way, La Cienega and San Vicente Boulevards, Caruso's approach brings a distinguished and unique dedication to serving the local community.

**Beverly Center** is home to over 90 stores featuring the best in luxury, contemporary and fast fashion favorites, all under one roof. Stores include: Apple, Balenciaga, Bloomingdale's, Brooks Brothers, Burberry, Coach, Diesel, Dolce & Gabbana, Ferragamo, Golden Goose, Gucci, KENZO, Louis Vuitton, Macy's, Maje, MCM, Montblanc, OMEGA Boutique, Prada, Saint Laurent, Sephora, Tumi, UNIQLO, Versace, Yardbird, ZARA, H&H Brazilian Steakhouse, Tocaya Modern Mexican, ABSTEAK by Chef Akira Back, ANGLER, Pitchoun Bakery & Cafe, Eggslut, and more.

**BEVERLY HILLS**

± 1.6 miles  
± 5-15 mins



**100 N. LA CIENEGA BOULEVARD**  
LOS ANGELES, CALIFORNIA 90048

Source: 333LaCienega.com, 8500Burton.com, Beverly Center website

**JAY LUCHS**  
**CARLY GELLER**

Vice Chairman  
Director - Jay Luchs Group

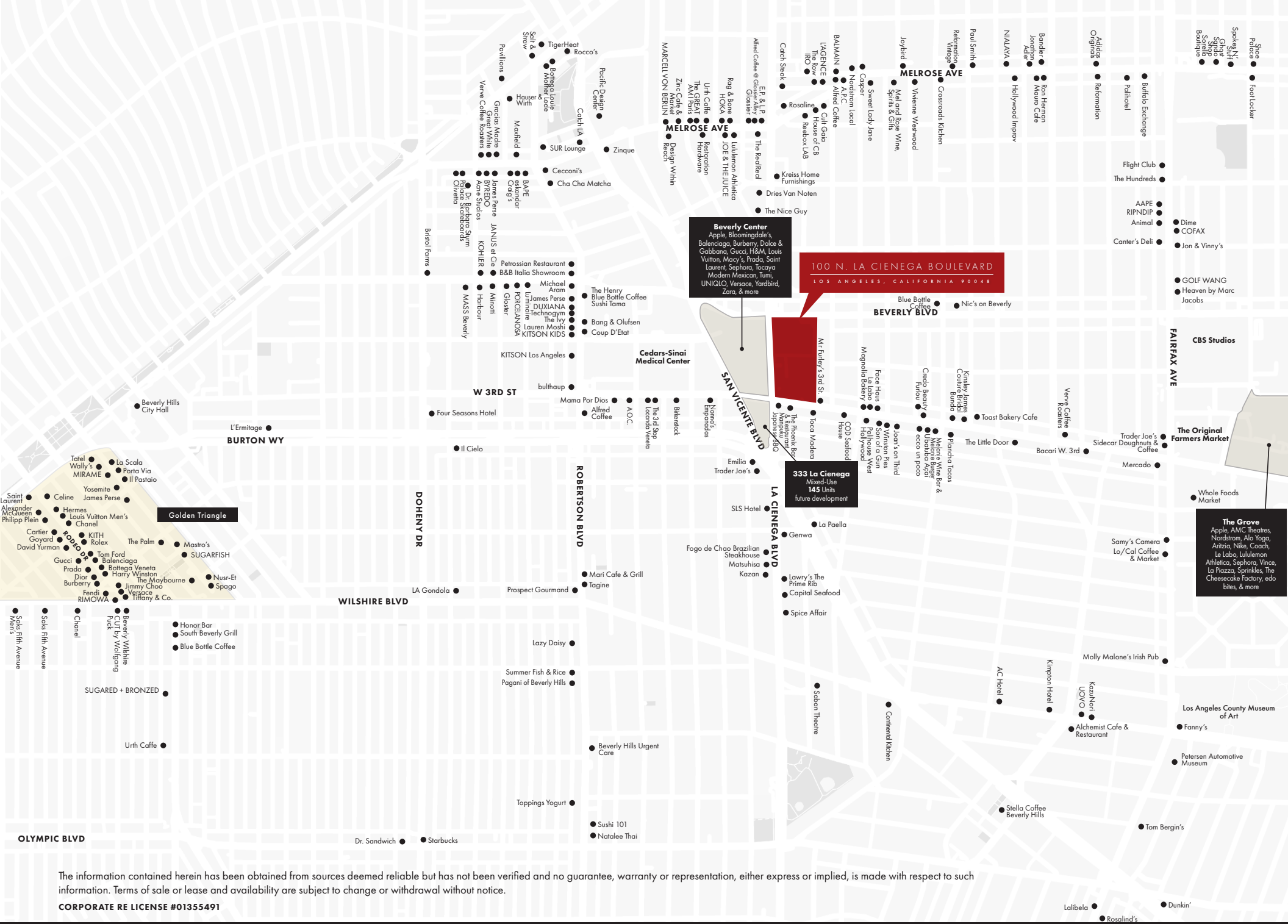
310-407-6585  
310-593-0760

jay.luchs@nrmk.com  
carly.geller@nrmk.com

CA RE Lic. #01260345  
CA RE Lic. #02153582

**JAYLUCHS.COM**  
**NEWMARK**





The information contained herein has been obtained from sources deemed reliable but has not been verified and no guarantee, warranty or representation, either express or implied, is made with respect to such information. Terms of sale or lease and availability are subject to change or withdrawal without notice.

CORPORATE RE LICENSE #01355491

**JAY LUCHS**  
**CARLY GELLER**

Vice Chairman  
Director - Jay Luchs Group

310-407-6585  
310-593-0760

jay.luchs@nrmk.com  
carly.geller@nrmk.com

CA RE Lic. #01260345  
CA RE Lic. #02153582

**JAYLUCHS.COM**  
**NEWMARK**