



1020 S. ROBERTSON BOULEVARD

R E T A I L A V A I L A B L E

JAY LUCHS
CARLY GELLER

Vice Chairman 310-407-6585
Director - Jay Luchs Group 310-593-0760

jay.luchs@nrmk.com
carly.geller@nrmk.com

CA RE Lic. #01260345
CA RE Lic. #02153582

JAYLUCHS.COM
NEWMARK



1020 S. ROBERTSON BOULEVARD



ADDRESS

1020 S. Robertson Boulevard
Los Angeles, CA 90035



USE

Retail



SIZE

±1,550 SF + Patio



RENT

\$7,800 per month MG



PARKING

1 tandem lane
2 spaces total
\$150 per month/space



HIGHLIGHTS

- Open Layout
- Large patio area
- Large checkered tile
- Kitchen area

JAY LUCHS
CARLY GELLER

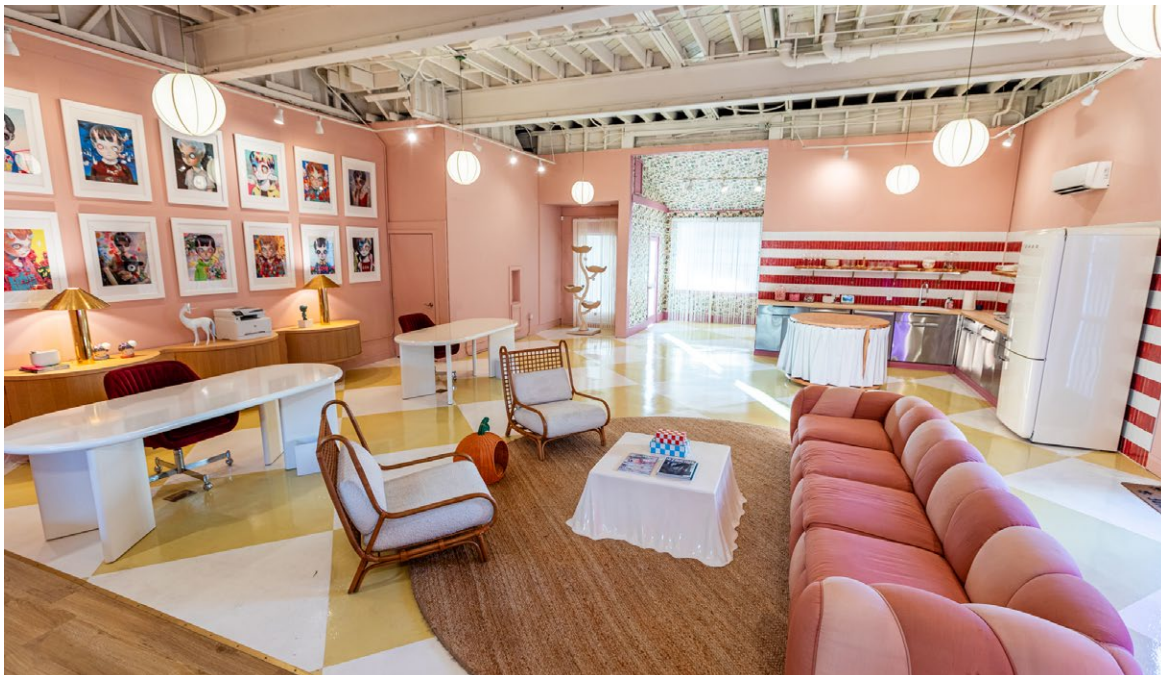
Vice Chairman 310-407-6585
Director - Jay Luchs Group 310-593-0760

jay.luchs@nrmk.com
carly.geller@nrmk.com

CA RE Lic. #01260345
CA RE Lic. #02153582

JAYLUCHS.COM
NEWMARK

INTERIOR PHOTOS



JAY LUCHS
CARLY GELLER

Vice Chairman 310-407-6585
Director - Jay Luchs Group 310-593-0760

jay.luchs@nrmk.com
carly.geller@nrmk.com

CA RE Lic. #01260345
CA RE Lic. #02153582

JAYLUCHS.COM
NEWMARK



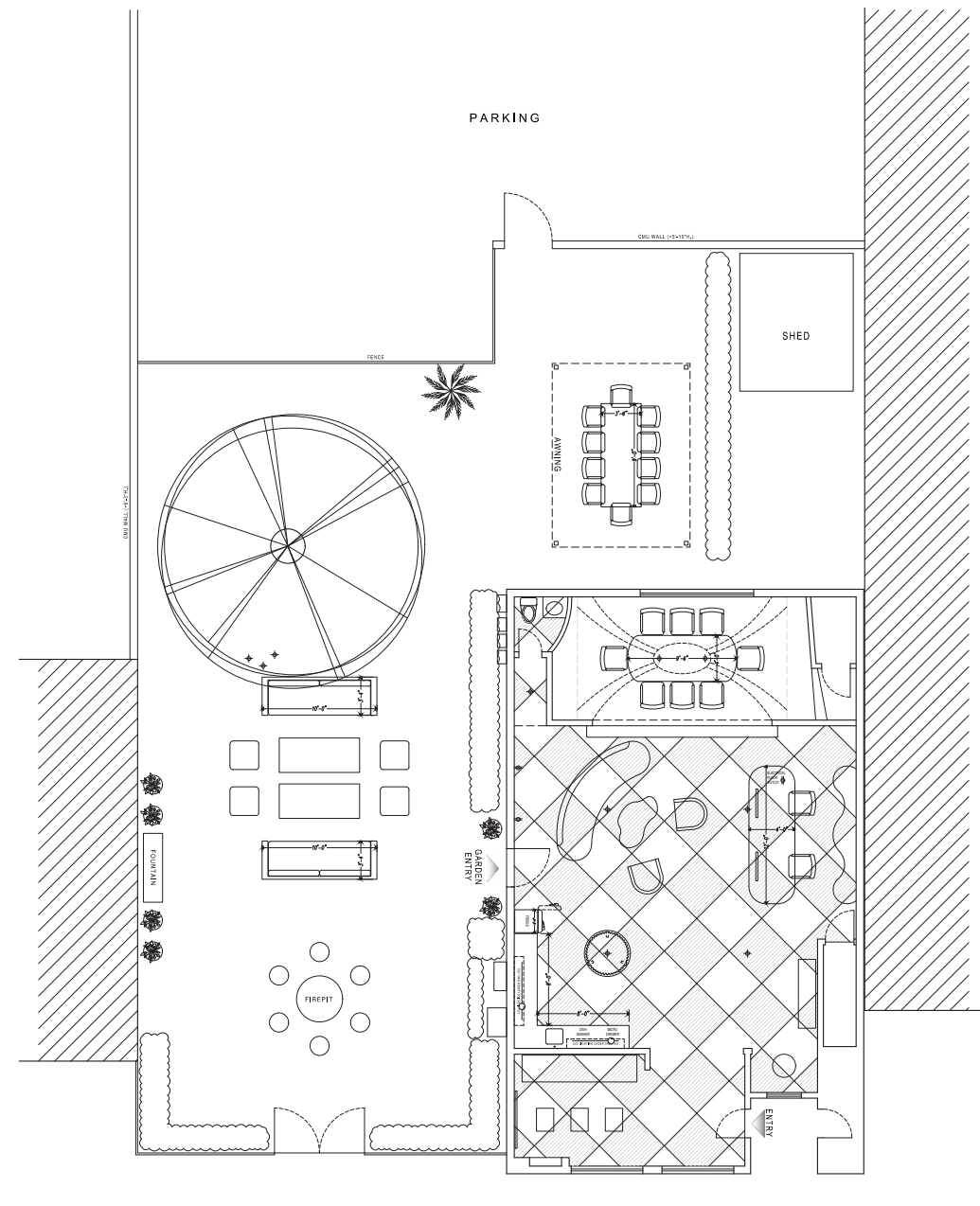
JAY LUCHS
CARLY GELLER

Vice Chairman 310-407-6585
Director - Jay Luchs Group 310-593-0760

jay.luchs@nrmk.com
carly.geller@nrmk.com

CA RE Lic. #01260345
CA RE Lic. #02153582

JAYLUCHS.COM
NEWMARK



S. ROBERTSON BOULEVARD

The information contained herein has been obtained from sources deemed reliable but has not been verified and no guarantee, warranty or representation, either express or implied, is made with respect to such information. Terms of sale or lease and availability are subject to change or withdrawal without notice.

Corporate RE Lic. #01355491

JAY LUCHS
CARLY GELLER

Vice Chairman 310-407-6585
Director - Jay Luchs Group 310-593-0760

jay.luchs@nrmk.com
carly.geller@nrmk.com

CA RE Lic. #01260345
CA RE Lic. #02153582

JAYLUCHS.COM
NEWMARK