

# 104 S. ROBERTSON BOULEVARD



RETAIL SPACE  
AVAILABLE FOR  
LEASE

**JAY LUCHS**  
Executive Vice Chairman  
T 310-407-6585  
jay.luchs@nmrk.com  
CA RE Lic. #01260345

**CARLY GELLER**  
Director  
T 310-593-0760  
carly.geller@nmrk.com  
CA RE Lic. #02153582

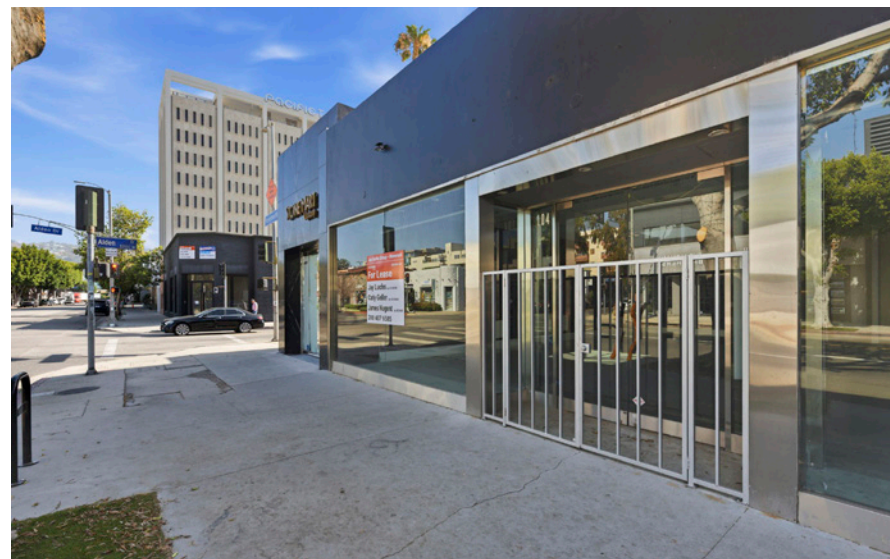
**JAMES NUGENT**  
Associate  
T 310-407-6584  
james.nugent@nmrk.com  
CA RE Lic. #02218437

**JAYLUCHS.COM**

**NEWMARK**  
PACIFIC

# PROPERTY HIGHLIGHTS

- Approximately 40 feet of prime frontage at the intersection of Robertson Boulevard and Alden Drive
- Existing condition of the space has modern finishes, polished concrete floors and storage room and restroom in place
- Surrounded by luxury furniture and home goods showrooms, art galleries and high end dining
- Public parking structure nearby in addition to ample street parking



## OVERVIEW

### SIZE

Approximately 2,650 SF

### USE

Retail/Showroom

### AVAILABLE

Immediate

### RENT

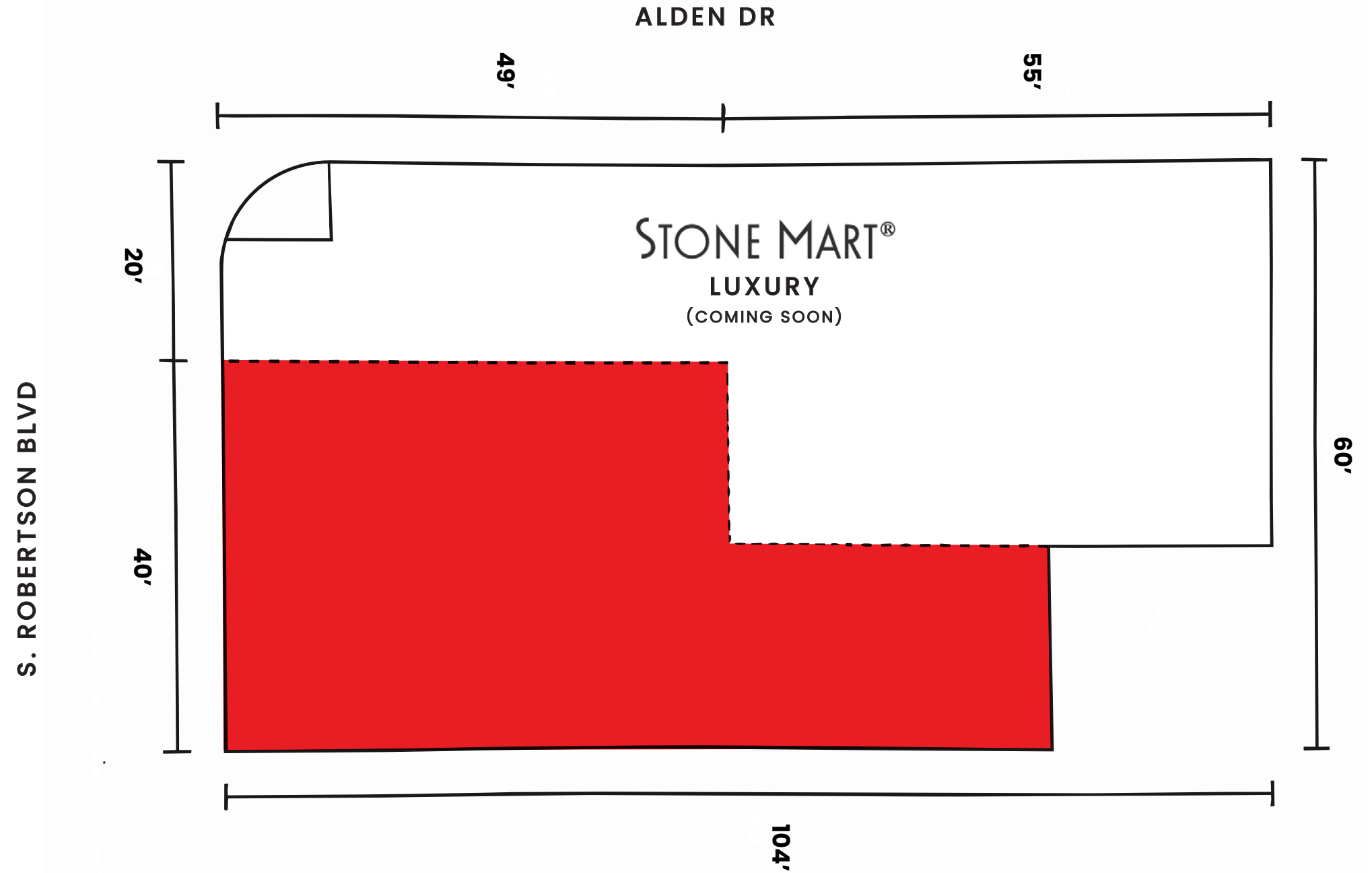
Available upon Request

**INTERIOR**



# FLOOR PLAN

APPROXIMATELY 2,650 SF



\*Not drawn to scale. All dimensions are approximate.



# AREA OVERVIEW

Located on Robertson Boulevard, this property sits within a trendy, tree-lined retail corridor that connects West Hollywood and Beverly Hills. The property benefits from excellent visibility and accessibility within a vibrant, high-traffic commercial district. The high-profile corridor is well known for its concentration of fashion boutiques, design showrooms, and lifestyle retailers, and great restaurants, drawing both local shoppers and destination visitors.



# ROBERTSON BLVD MAP

BEVERLY BOULEVARD

- 164** Starbucks
- 158** Nana Jacqueline
- 154** Curve
- 146** Arclinea
- 144** Worldwide Production Agency
- 143** Visionnaire
- ROBERTSON PLAZA**  
The Henry Restaurant, Blue Bottle, Box Union, Sushi Tama, Bibo Ergo Sum, Garayan, Sherle Wagner International
- 116-120** Parking
- 110** Rimadesio
- 108** Herman Miller
- 106** For Lease - Jay Luchs Group
- 100** Future Miele

BEVERLY BOULEVARD

- Eternity Modern **157**
- Molteni & C Dada **147**
- Vacant **145**
- James Perse - Home **143**
- Duxiana **133**
- Technogym **131**
- Armani Casa **125**
- Development **123**
- Nous Model Management/Nu Talent Agency **117**
- The Ivy Restaurant **113**
- Lauren Moshi **107-109**
- Kitson Kids **101**

## ROBERTSON BOULEVARD

ALDEN DRIVE

- Altman Brothers office **103-105**
- Douglass Elliman Real Estate Offices (2nd Floor) **101**
- For Lease - Jay Luchs Group **107**
- For Lease - Jay Luchs Group **109**
- TBC To Be Continued **111**
- Maker and Son **113**
- Kitson **115**

ALDEN DRIVE

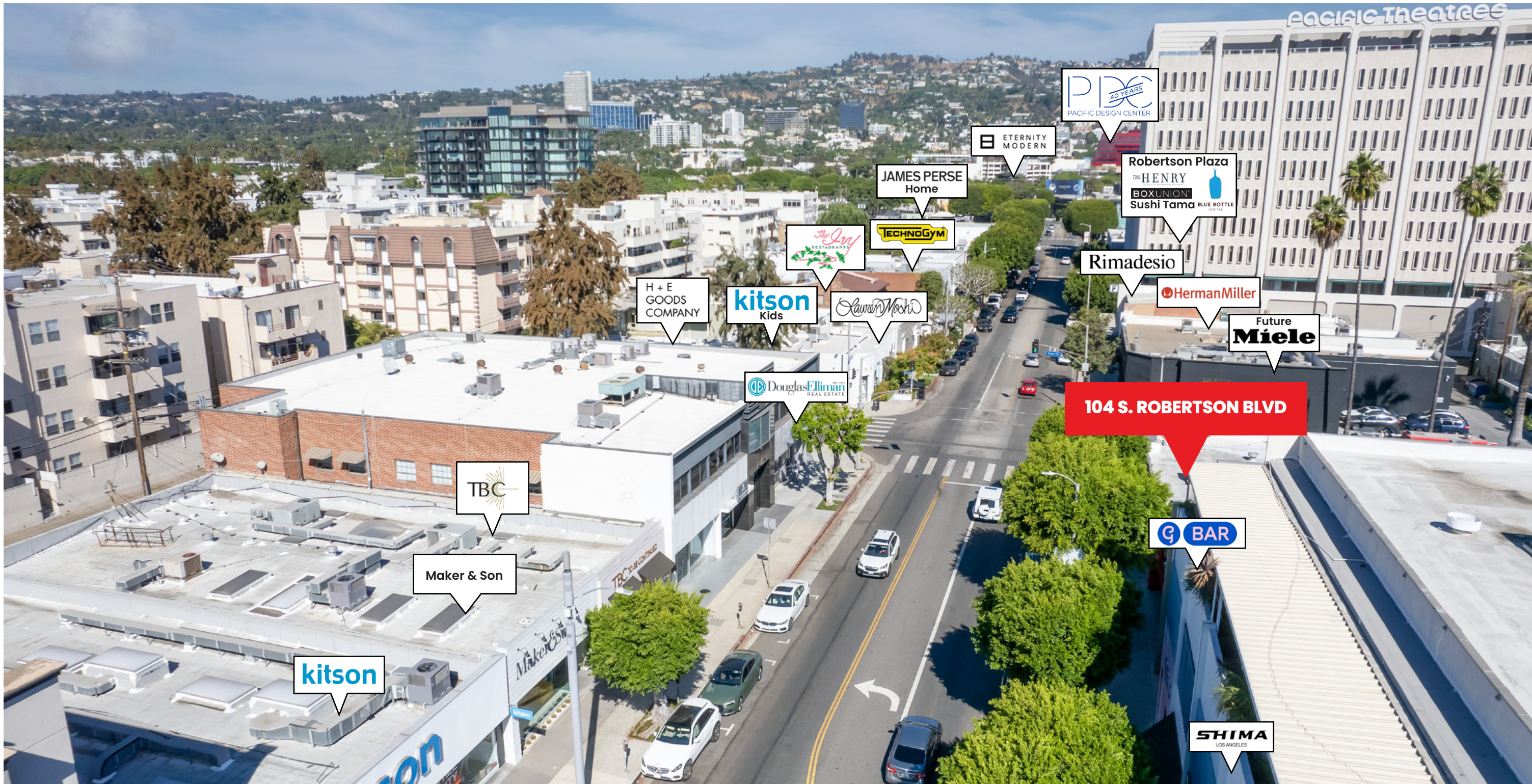
- 100** Stone Mart Luxury
- 104** For Lease - Jay Luchs Group
- 110** Rudolph and Sletten
- 112** G.Bar
- 114** For Lease
- 116** For Lease
- 118** Pearlina Health
- 120** Shima
- 122** Office
- 130** Northern Wide Plank
- Allure Hues Salon
- 132** Crane Salon
- 134** Porcelina
- 136** Ricca
- 140** Indigo Seas
- 142** Rosa Clara (coming soon)
- 146** Neutrapedic
- 154-156** Melaaura
- 100** 76 Gasoline

ROBERTSON BOULEVARD PUBLIC PARKING

- Youthfill MD **123**
- Sager French Salon **123**
- Showroom **143**
- Sushi Nakazawa **145-147**
- bulthaup **153**

3RD STREET

3RD STREET



**104 S. ROBERTSON BLVD**

# JAY LUCHS GROUP

RETAIL ESTATE | LOS ANGELES

[JAYLUCHS.COM](http://JAYLUCHS.COM)

**JAY LUCHS**

Executive Vice Chairman  
T 310-407-6585  
[jay.luchs@nmrk.com](mailto:jay.luchs@nmrk.com)  
CA RE Lic. #01260345

**CARLY GELLER**

Director  
T 310-593-0760  
[carly.geller@nmrk.com](mailto:carly.geller@nmrk.com)  
CA RE Lic. #02153582

**JAMES NUGENT**

Associate  
T 310-407-6584  
[james.nugent@nmrk.com](mailto:james.nugent@nmrk.com)  
CA RE Lic. #02218437

**NEWMARK**  
PACIFIC

**CORPORATE RE LICENSE #01796698**

The information contained herein has been obtained from sources deemed reliable but has not been verified and no guarantee, warranty or representation, either express or implied, is made with respect to such information. Terms of sale or lease and availability are subject to change or withdrawal without notice.