



106 N. ROBERTSON BLVD
LOS ANGELES, CA 90048

JAY LUCHS Executive Vice Chairman 310-407-6585 jay.luchs@nrmk.com CA RE Lic. #01260345 **JAYLUCHS.COM**

NEWMARK
PACIFIC

jayluchs.com
For Lease
310 407 6585
Jay Luchs
Los Angeles



ADDRESS

106 N. Robertson Blvd
Los Angeles, CA 90048

USE

Retail

SIZE

±1,200 SF

RENT

Available upon Request

AVAILABLE

Immediately

PARKING

Available

JAY LUCHS Executive Vice Chairman 310-407-6585 jay.luchs@nrmk.com CA RE Lic. #01260345

JAYLUCHS.COM

NEWMARK
PACIFIC

jayluchs.com
For Lease
310 407 6585
Jay Luchs
Los Angeles

INTERIOR

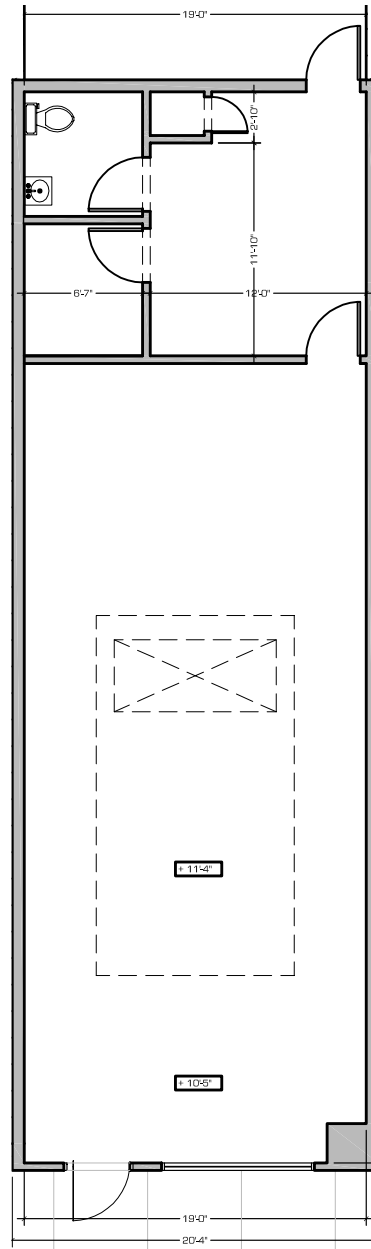


JAY LUCHS Executive Vice Chairman 310-407-6585 jay.luchs@nrmk.com CA RE Lic. #01260345 JAYLUCHS.COM

NEWMARK
PACIFIC

jayluchs.com
For Lease
310 407 6585
Jay Luchs
Los Angeles

FLOOR PLAN



NORTH ROBERTSON BLVD.

JAY LUCHS Executive Vice Chairman

310-407-6585

jay.luchs@nrmk.com

CA RE Lic. #01260345

JAYLUCHS.COM

NEWMARK
PACIFIC

jayluchs.com
For Lease
310 407 6585
Jay Luchs
Los Angeles



±42,173
CARS PER DAY*

PDC
40-YEARS
PACIFIC DESIGN CENTER

Leica

Molteni & C Dada

Cassina

JAMES PERSE

DUXIANA

TECHNOGYM

CURVE

Kartell

ROBERTSON PLAZA
THE HENRY
BOX UNION
Sushi Tama

BLUE BOTTLE COFFEE

106 N. ROBERTSON BLVD
LOS ANGELES, CA 90048

Future
Miele

Rimadesio

Herman Miller

The Zen RESTAURANTS

Lawson Meshi

kitson

Cedars Sinai

BEVERLY BOULEVARD

BEVERLY BOULEVARD



Nana Jacqueline

CURVE

Arclinea

Worldwide Production Agency

Visionnaire

ROBERTSON PLAZA



THE HENRY

BLUE BOTTLE
COFFEE

BOXUNION

Sushi Tama, Garayan,
Sherle Wagner International

Parking

Rimadesio

HermanMiller

Future

Miele

106 N. ROBERTSON BLVD
LOS ANGELES, CA 90048

ALDEN DRIVE

Rudolph and Sletten



NICOLE SASSAMAN

Pearline Health

Office

Northern Wide Plank



Crane Salon

Porcelina

Ricca

Indigo Seas

Rosa Clara (coming soon)

Neutrapedic

Melaaura



3RD STREET

N. ROBERTSON BOULEVARD

S. ROBERTSON BOULEVARD



Molteni&C | **Dada**

JAMES PERSE Home

DUXIANA



Armani Casa

Development

Nous Model Management/Nu Talent Agency



kitson

ALDEN DRIVE

Altman Brothers office

Douglass Elliman Real Estate Offices (2nd Floor)



kitson

ROBERTSON BOULEVARD PUBLIC PARKING

Youthfill MD



Sushi Nakazawa

bulthaup

3RD STREET

The information contained herein has been obtained from sources deemed reliable but has not been verified and no guarantee, warranty or representation, either express or implied, is made with respect to such information. Terms of sale or lease and availability are subject to change or withdrawal without notice.

Corporate RE Lic #01796698

JAY LUCHS Executive Vice Chairman 310-407-6585

jay.luchs@nrmk.com

CA RE Lic. #01260345

JAYLUCHS.COM

NEWMARK
PACIFIC

jayluchs.com
For Lease
310 407 6585
Jay Luchs
Los Angeles