

107-109 S. ROBERTSON BLVD

APPROXIMATELY 1,850 – 3,800 SF RETAIL
AVAILABLE FOR LEASE



NEWMARK
PACIFIC

BR
BRIDGE
REAL ESTATE

JAY LUCHS

Executive Vice Chairman

T 310-407-6585

jay.luchs@nrmk.com

CA RE Lic. #01260345

BRIAN ABDI

Director

T 310-275-9222

ba@bridgerealstate.com

CA RE Lic. #01879399

*Digitally altered image

107 S. ROBERTSON BLVD HIGHLIGHTS

- High-design boutique retail/showroom opportunity
- Dramatic architectural interiors with custom slat detailing
- Polished concrete floors and premium lighting package
- Open, flexible floor plan with strong merchandising potential
- Floor-to-ceiling storefront presence and abundant natural light
- Modern built-in display shelving
- Turnkey condition ideal for luxury retail
- Sophisticated modern aesthetic with strong brand presentation potential

OVERVIEW

**107 S. ROBERTSON BLVD:
APPROXIMATELY 1,850 SF**

***CAN BE COMBINED WITH 109 S.
ROBERTSON FOR UP TO 3,800 SF AVAILABLE**

USE: RETAIL

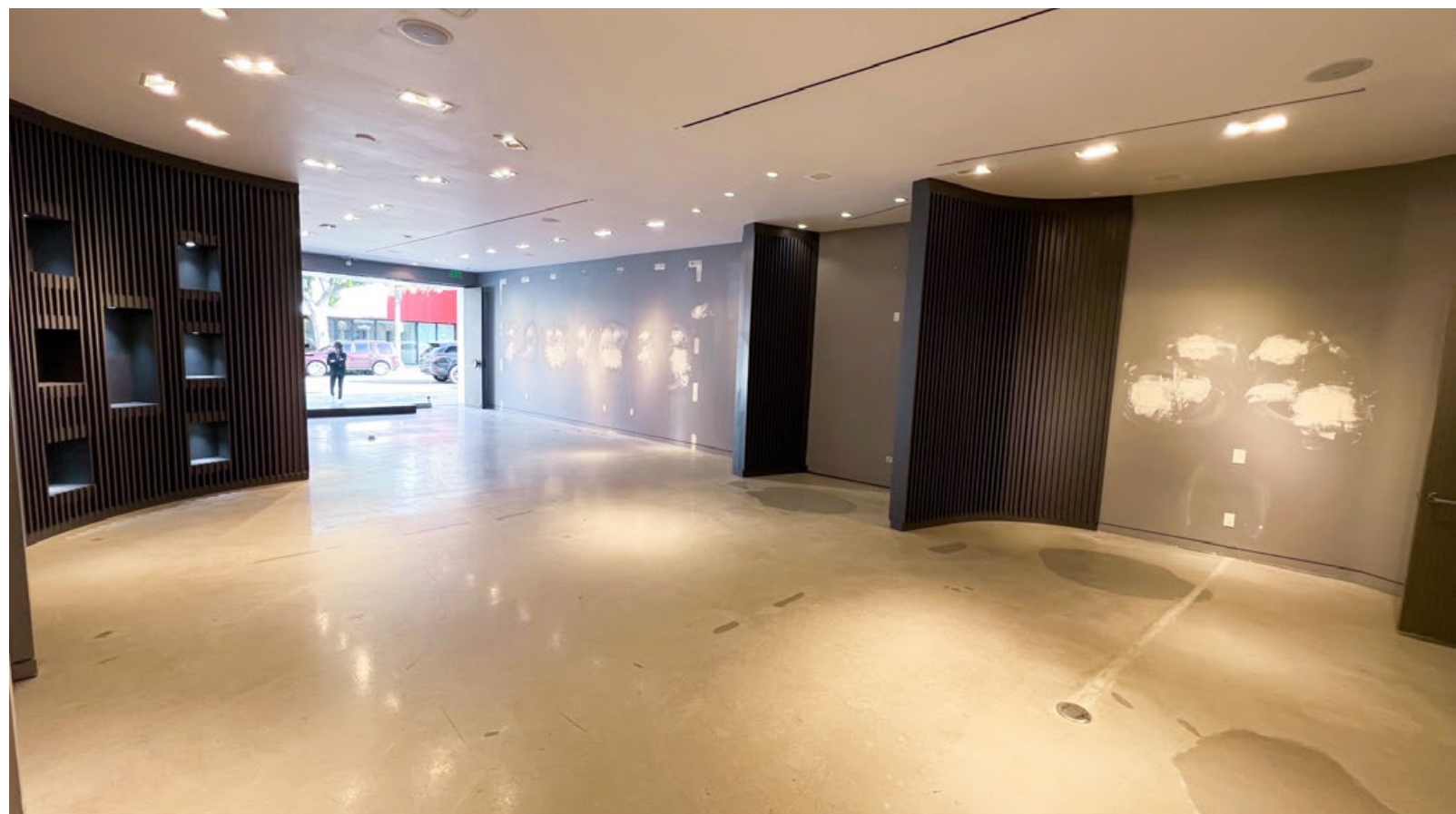
RENT: UPON REQUEST

AVAILABLE: IMMEDIATE

PARKING: SPACE IN REAR



INTERIOR



109 S. ROBERTSON BLVD HIGHLIGHTS

- High-design boutique retail/showroom opportunity
- Open, flexible floor plan with strong merchandising potential
- Floor-to-ceiling storefront presence and abundant natural light
- Approximately 23 feet of Robertson Boulevard frontage with great visibility and prominent signage potential
- Beverly Hills-adjacent; minutes to Beverly Center, Cedars-Sinai, The Grove, and West Third Street retail
- Affluent trade area with a strong daytime population driven by medical, creative, and retail employers
- Highly walkable corridor with nearby transit and consistent pedestrian activity

OVERVIEW

**109 S. ROBERTSON BLVD:
APPROXIMATELY 1,950 SF**

***CAN BE COMBINED WITH 107 S.
ROBERTSON FOR UP TO 3,800 SF AVAILABLE**

USE: RETAIL

RENT: UPON REQUEST

AVAILABLE: IMMEDIATE

PARKING: SPACE IN REAR



AREA OVERVIEW

Located on Robertson Boulevard, one of the Westside's most recognized north-south thoroughfares, this property sits within a trendy, tree-lined retail corridor that connects West Hollywood and Beverly Hills. The surrounding area is positioned directly between the booming cities of Beverly Hills and Culver City, just 15 minutes from the beach and 15 minutes from Downtown Los Angeles. The property benefits from excellent visibility and accessibility within a vibrant, high-traffic commercial district, with high-profile neighboring tenants including Kitson, The Ivy, TBC, Maker & Son, and Herman Miller. The corridor is well known for its concentration of fashion boutiques, design showrooms, and lifestyle retailers, drawing both local shoppers and destination visitors.



ROBERTSON BLVD MAP

BEVERLY BOULEVARD

- 164** Starbucks
- 158** Nana Jacqueline
- 154** Curve
- 146** Arclinea
- 144** Worldwide Production Agency
- 143** Visionnaire
- 116-120** **ROBERTSON PLAZA**
The Henry Restaurant, Blue Bottle, Box Union, Sushi Tama, Bibo Ergo Sum, Garayan, Sherle Wagner International
- Parking
- 110** Rimadesio
- 108** Herman Miller
- 106**
- 100** Future Miele

ALDEN DRIVE

- 100**
- 110** Rudolph and Sletten
- 112** G.Bar
- 114**
- 116** Nicole Sassaman
- 118** Pearlline Health
- 120** Shima
- 122** Office
- 130** Northern Wide Plank
- Allure Hues Salon
- 132** Crane Salon
- 134** Porcelina
- 136** Ricca
- 140** Indigo Seas
- 142** Rosa Clara (coming soon)
- 146** Neutrapedic
- 154-156** Melaura
- 100** 76 Gasoline

3RD STREET

BEVERLY BOULEVARD

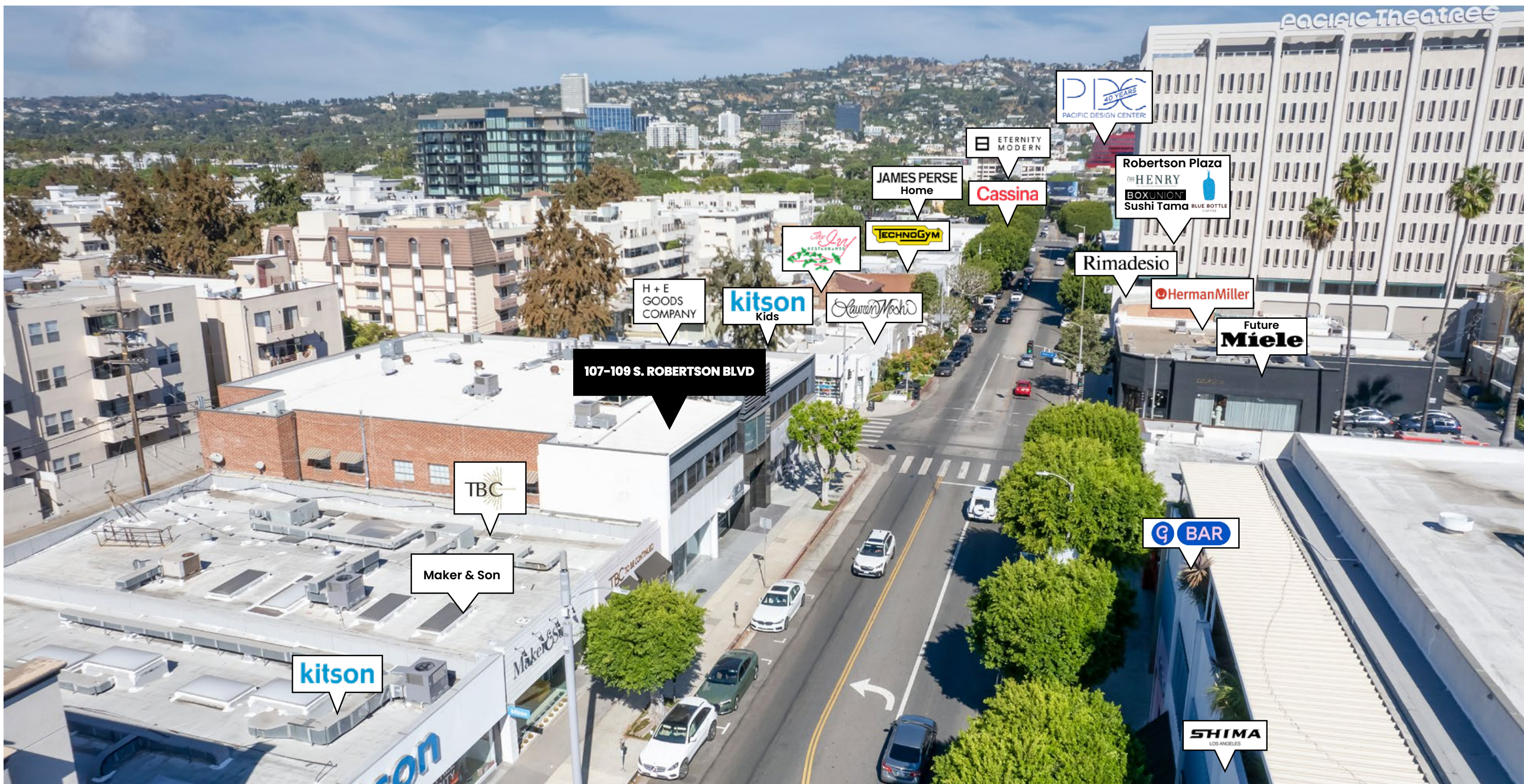
- Eternity Modern **157**
- Molteni & C Dada **147**
- 145**
- James Perse - Home **143**
- Duxiana **133**
- Technogym **131**
- Armani Casa **125**
- Development **123**
- Nous Model Management/Nu Talent Agency **117**
- The Ivy Restaurant **113**
- Lauren Moshi **107-109**
- Kitson Kids **101**

ALDEN DRIVE

- Altman Brothers office **103-105**
- Douglass Elliman Real Estate Offices (2nd Floor) **101**
- For Lease - Jay Luchs* 107**
- For Lease - Jay Luchs* 109**
- TBC To Be Continued **111**
- Leased **113**
- Kitson **115**
- ROBERTSON BOULEVARD PUBLIC PARKING**
- Youthfill MD **123**
- Soger French Salon **123**
- 143**
- Sushi Nakazawa **145-147**
- bulthaup **153**

3RD STREET

*Can be combined for up to 3,800 SF available



107-109 S. ROBERTSON BLVD

kitson

Maker & Son

TBC

H + E
GOODS
COMPANY

kitson
Kids

The Ivy
RESTAURANT

Lauren Meshi

TECHNOGYM

JAMES PERSE
Home

ETERNITY
MODERN

Cassina

PDC
40 YEARS
PACIFIC DESIGN CENTER

Robertson Plaza
THE HENRY
BOXUNION
Sushi Tama

Rimadesio

Herman Miller

Future
Miele

G BAR

SHIMA
LOS ANGELES

PACIFIC THEATRES



107-109 S. ROBERTSON BOULEVARD

NEWMARK
PACIFIC

BR
BRIDGE
REAL ESTATE

JAY LUCHS

Executive Vice Chairman

T 310-407-6585

jay.luchs@nmrk.com

CA RE Lic. #01260345

BRIAN ABDI

Director

T 310-275-9222

ba@bridgerealstate.com

CA RE Lic. #01879399

The information contained herein has been obtained from sources deemed reliable but has not been verified and no guarantee, warranty or representation, either express or implied, is made with respect to such information. Terms of sale or lease and availability are subject to change or withdrawal without notice.

*Digitally altered images, view original photo [here](#)

JAYLUCHS.COM

CORPORATE RE LICENSE #01796698