

# 107 | HEWITT



JOIN WORLD RENOWN **CHEF LIWEI LIAO**  
OF **THE JOINT** AND **UOCHIBA** AT 107 | HEWITT

RETAIL FOR LEASE  
ARTS DISTRICT

jayluchs.com  
**For Lease**  
**310 407 6585**  
**Jay Luchs**  
Los Angeles

**NEWMARK**

**BR**  
BRIDGE  
REAL ESTATE

**JAY LUCHS**  
Vice Chairman  
310-407-6585  
jay.luchs@nmrk.com  
CA RE Lic. #01260345  
[jayluchs.com](http://jayluchs.com)

**BRIAN ABDI**  
Director  
310-275-9222  
ba@bridgerealestate.com  
CA RE Lic. #01879399

107 | HEWITT is a collection of premier luxury apartment and Ground Floor Retail located in the vibrant neighborhood of Downtown Los Angeles with stunning views of the city.

# WHERE THE ARTS DISTRICT MEETS LITTLE TOKYO



**GROUND FLOOR RETAIL**  
SPACES FROM ±1,330 SF UP TO ±8,865 SF AVAILABLE

107 | HEWITT

jayluchs.com  
**For Lease**  
**310 407 6585**  
**Jay Luchs**  
Los Angeles

**NEWMARK**

**BR**  
**BRIDGE**  
REAL ESTATE

**JAY LUCHS**  
Vice Chairman  
310-407-6585  
jay.luchs@nmrk.com  
CA RE Lic. #01260345  
[jayluchs.com](http://jayluchs.com)

**BRIAN ABDI**  
Director  
310-275-9222  
ba@bridgerealestate.com  
CA RE Lic. #01879399

# BUILDING HIGHLIGHTS

- Ground floor retail available below luxury apartments
- Just a few blocks away from the Arts District, known for its thriving art scene and being one of the most vibrant neighborhoods in the city
- Walking distance from The Geffen Contemporary at MOCA, Japanese American National Museum, and Hauser & Wirth Galleries
- Convenient to award-winning restaurants including Camphor, Father's Office, Sushi Gen, and many others
- Nearby employers include Spotify and Warner Music
- A short drive away from iconic neighborhoods like Hollywood, Beverly Hills, and Santa Monica
- Retail parking available in underground garage
- Various uses for spaces
- Spaces feature large windows, concrete flooring, and high-exposed ceilings



107 | HEWITT

jayluchs.com  
**For Lease**  
**310 407 6585**  
**Jay Luchs**  
Los Angeles

**NEWMARK**

**BR**  
**BRIDGE**  
REAL ESTATE

**JAY LUCHS**  
Vice Chairman  
310-407-6585  
jay.luchs@nmrk.com  
CA RE Lic. #01260345  
[jayluchs.com](http://jayluchs.com)

**BRIAN ABDI**  
Director  
310-275-9222  
ba@bridgerealestate.com  
CA RE Lic. #01879399

# TENANT HIGHLIGHTS



## JOIN THE JOINT SEAFOOD AND UOICHIBA

うおいちば  
**UOICHIBA**  
TEMAKI + CHIRASHI

UOICHIBA is a 10-seat counter serving temaki handrolls, chirashi bowls, and sashimi using dry-aged fish from the chef's fish market Joint Seafood.



# THE JOINT

coffee+tea | seafood market

The Joint is a seafood market and cafe joining 107 Hewitt. The Joint specializes in dry aging seafood which minimizes waste while maximizing its quality.



107 | HEWITT

jayluchs.com  
**For Lease**  
**310 407 6585**  
**Jay Luchs**  
Los Angeles

**NEWMARK**

**BR**  
BRIDGE  
REAL ESTATE

**JAY LUCHS**  
Vice Chairman  
310-407-6585  
jay.luchs@nmrk.com  
CA RE Lic. #01260345  
[jayluchs.com](http://jayluchs.com)

**BRIAN ABDI**  
Director  
310-275-9222  
ba@bridgerealestate.com  
CA RE Lic. #01879399

**ASKING RENT**

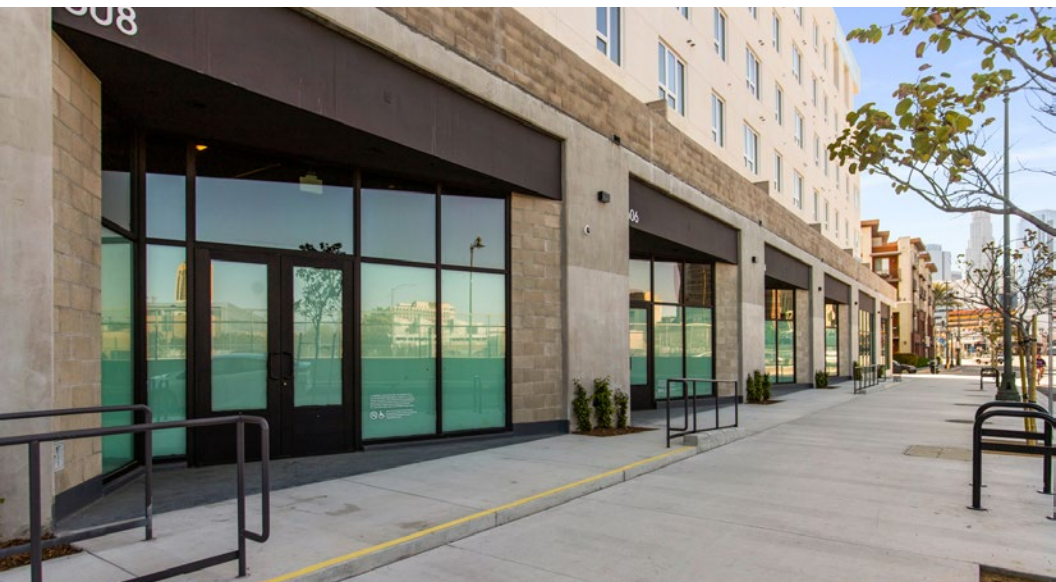
AVAILABLE UPON REQUEST

**AVAILABLE SPACES INFO**

<b>RETAIL 1</b>	LEASED	
<b>RETAIL 2</b>	RETAIL/FITNESS	±3,042 SF
<b>RETAIL 3</b>	RETAIL	±1,396 SF
<b>RETAIL 4</b>	RETAIL	±1,330 SF
<b>RETAIL 5</b>	RETAIL	±1,409 SF
<b>RETAIL 6</b>	RETAIL/GALLERY	±1,688 SF
<b>TOTAL AVAILABLE</b>		<b>±8,865 SF</b>



# EXTERIOR PHOTOS



107 | HEWITT

jayluchs.com  
**For Lease**  
**310 407 6585**  
**Jay Luchs**  
Los Angeles

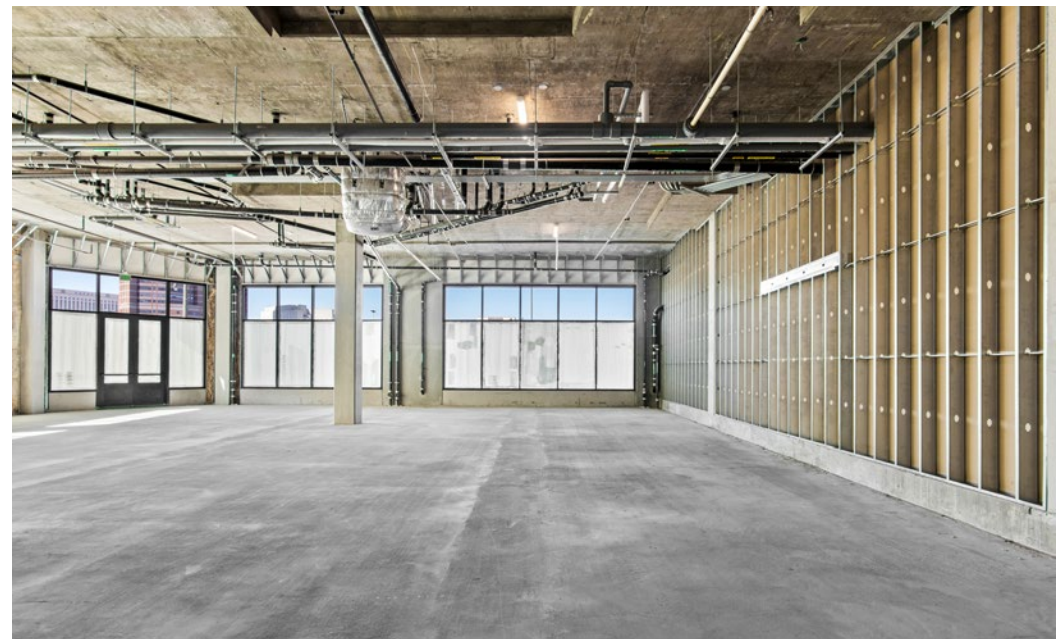
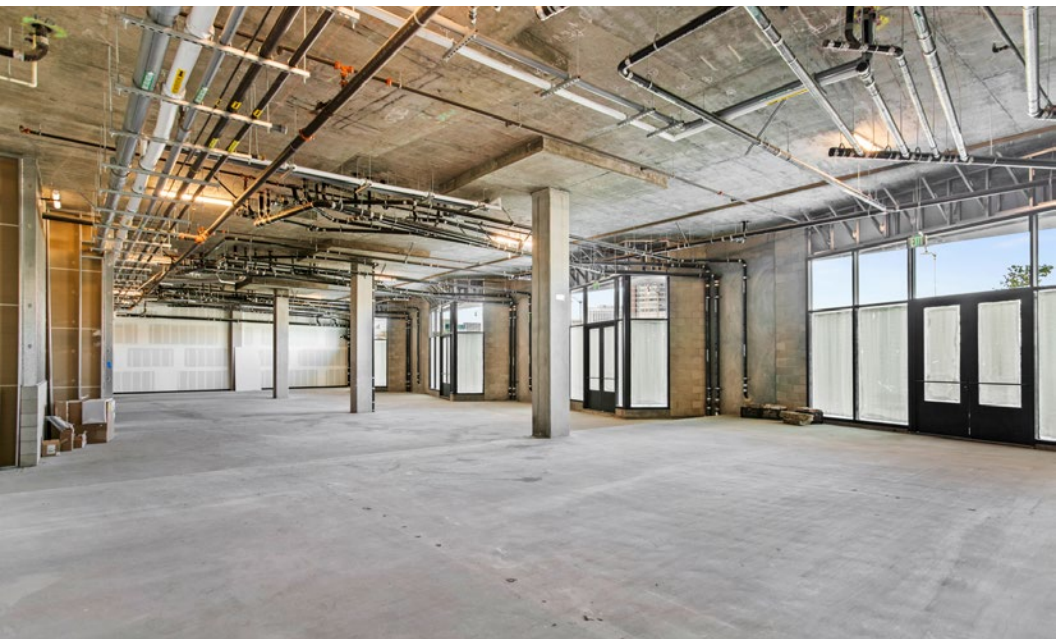
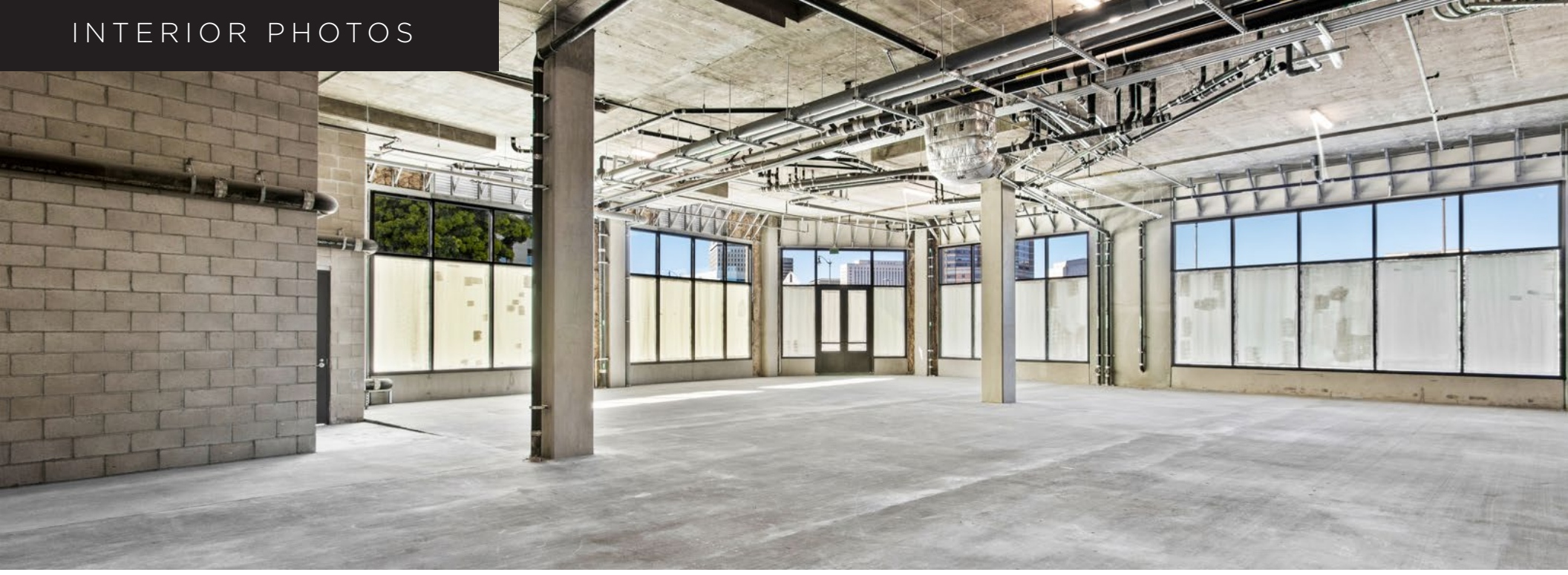
**NEWMARK**

**BR**  
**BRIDGE**  
REAL ESTATE

**JAY LUCHS**  
Vice Chairman  
310-407-6585  
jay.luchs@nmrk.com  
CA RE Lic. #01260345  
[jayluchs.com](http://jayluchs.com)

**BRIAN ABDI**  
Director  
310-275-9222  
ba@bridgerealestate.com  
CA RE Lic. #01879399

# INTERIOR PHOTOS



107 | HEWITT

jayluchs.com  
**For Lease**  
**310 407 6585**  
**Jay Luchs**  
Los Angeles

**NEWMARK**

**BR**  
**BRIDGE**  
REAL ESTATE

**JAY LUCHS**  
Vice Chairman  
310-407-6585  
jay.luchs@nmrk.com  
CA RE Lic. #01260345  
[jayluchs.com](http://jayluchs.com)

**BRIAN ABDI**  
Director  
310-275-9222  
ba@bridgerealestate.com  
CA RE Lic. #01879399



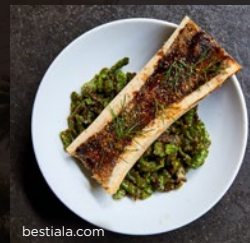
# THE ARTS DISTRICT

*ONE OF THE HOTTEST NEIGHBORHOODS IN DOWNTOWN LOS ANGELES*

Located just east of Little Tokyo and west of the L.A. River, the Arts District is at the height of Downtown L.A.'s renaissance.

What started as an urban artist's colony in the 1970's has recently become a hotbed for creators from all arenas, making it one of the city's most exciting neighborhoods to visit.

The Arts District has become the epicenter of dining and shopping for Downtown L.A. Prominent galleries such as Hauser and Wirth, and eateries like Wurstkuche, Pie Hole, and the Arts District Brewery have not only become local favorites, but popular attractions for visitors and tourists.



bestiala.com

Bestia



wurstkuche.com

Wurstkuche



hauserwirth.com/locations

Hauser & Wirth Gallery





# LITTLE TOKYO

*WHERE TRADITIONAL MEETS MODERN*

Little Tokyo became a hub for Japanese immigrants at the turn of the 20th century and is a major cultural and civic center for Japanese Americans. Little Tokyo is approximately five city blocks, bounded on the west by Los Angeles Street, on the east by Alameda Street, on the south by 3rd Street, and on the north by 1st Street.

Little Tokyo is one of Downtown’s most walkable areas featuring museums, restaurants, and bars. Little Tokyo is known for a lively retail scene that embraces both traditional and popular cultural institutions including the Japanese American National Museum and Geffen Contemporary.

A recent wave of residential and commercial developments buildings are drawing more and more to this revitalized district.



Cafe Dulce  
[cafedulcelittletokyo.square.site](http://cafedulcelittletokyo.square.site)



Daikokuya  
[daikokuyala.com](http://daikokuyala.com)



The Geffen Contemporary at MOCA  
[moca.org](http://moca.org)



ARTS DISTRICT

- BOXX
- HAUSER & WIRTH
- AMERICANO
- SALT & STRAW
- PRINCE STREET PIZZA
- Wurstküche
- Arts District Brewing Company
- PIE HOLE
- LE LABO
- Camphor
- FATHER'S OFFICE
- BAVEL
- ZINC
- Luth Cafe

107 | HEWITT

jayluchs.com  
**For Lease**  
**310 407 6585**  
**Jay Luchs**  
 Los Angeles

**NEWMARK**



**JAY LUCHS**  
 Vice Chairman  
 310-407-6585  
 jay.luchs@nmrk.com  
 CA RE Lic. #01260345  
 jayluchs.com

**BRIAN ABDI**  
 Director  
 310-275-9222  
 ba@bridgerealestate.com  
 CA RE Lic. #01879399

## DEMOGRAPHICS



### TOTAL POPULATION

**53,779** **436,104** **1,167,228**

1 Mile 3 Miles 5 Miles

### DAYTIME POPULATION

**112,545** **573,606** **1,237,226**

1 Mile 3 Miles 5 Miles

### MEDIAN AGE

**41.0** **33.7** **33.5**

1 Mile 3 Miles 5 Miles

## DOWNTOWN LA



**20,222** **37%**

New residential units since 2010 Residential population growth from 2010 to 2022

**90,000+** **93%**

Residents Residential occupancy



**315,000+** **47,299**

Jobs Downtown employees per square mile



**17.4** **\$4.8**

Million visitors in DTLA (2022) Billion in sales (2019)

Demographics: Esri 2023, Downtown LA: DCBID 2019-2022



  
WALK SCORE  
**95**

107 | HEWITT

jayluchs.com  
**For Lease**  
**310 407 6585**  
**Jay Luchs**  
Los Angeles

**NEWMARK**

  
BRIDGE  
REAL ESTATE

**JAY LUCHS**  
Vice Chairman  
310-407-6585  
jay.luchs@nmrk.com  
CA RE Lic. #01260345  
[jayluchs.com](http://jayluchs.com)

**BRIAN ABDI**  
Director  
310-275-9222  
ba@bridgerealestate.com  
CA RE Lic. #01879399



**HONDA PLAZA**  
ALOHA CAFE, BBQ CHICKEN, MEN OH TOKUSHIMA RAMEN, PASTA E PASTA BY ALLEGRO, SUSHI GEN, KINJIRO, THE MERMAID, TOUS LES JOURS

**TENNO SUSHI**

**IT'S BOBA TIME**

**HAKATA IKKOUSHA TONKOTSU RAMEN**

**WOLF & CRANE**

**PRIME PIZZA**

**DAVE'S HOT CHICKEN**

**STARBUCKS**

**CHAMPION'S CURRY**

**SUNRIGHT TEA STUDIO**

**ZENSHUJI SOTO MISSION**

**GRAND CENTRAL MARKET**

**BRADBURY BUILDING**

**MARUKAI MARKET**

**JAPANESE VILLAGE PLAZA**  
CAFE DULCE, CHINCHIKURIN, HAMA SUSHI, HONEYMEE, JASON MARKK, HONEYMEE, MOKUYOBI, OOMASA, NIJIYA MARKET, KURA REVOLVING SUSHI BAR, YAMAZAKI BAKERY AND MORE

**MIYAKO HOTEL**

**FAR BAR**

**MR. RAMEN**

**SUSHI ENYA**

**RAKKAN RAMEN**

**THE BROAD**

**WALT DISNEY CONCERT HALL**

**DOROTHY CHANDLER PAVILION**

**GRAND PARK**

**AHMANSON THEATRE**

**LOS ANGELES CITY HALL**

**FUGETSU-DO BAKERY**

**DAIKOKUYA**

**JIST CAFE**

**EAST WEST PLAYERS**

**THE GEFKEN CONTEMPORARY AT MOCA**

**MARUGAME MONZO**

**JAPANESE AMERICAN NATIONAL MUSEUM**

**MOCA**

107 | HEWITT

jayluchs.com  
**For Lease**  
**310 407 6585**  
**Jay Luchs**  
Los Angeles

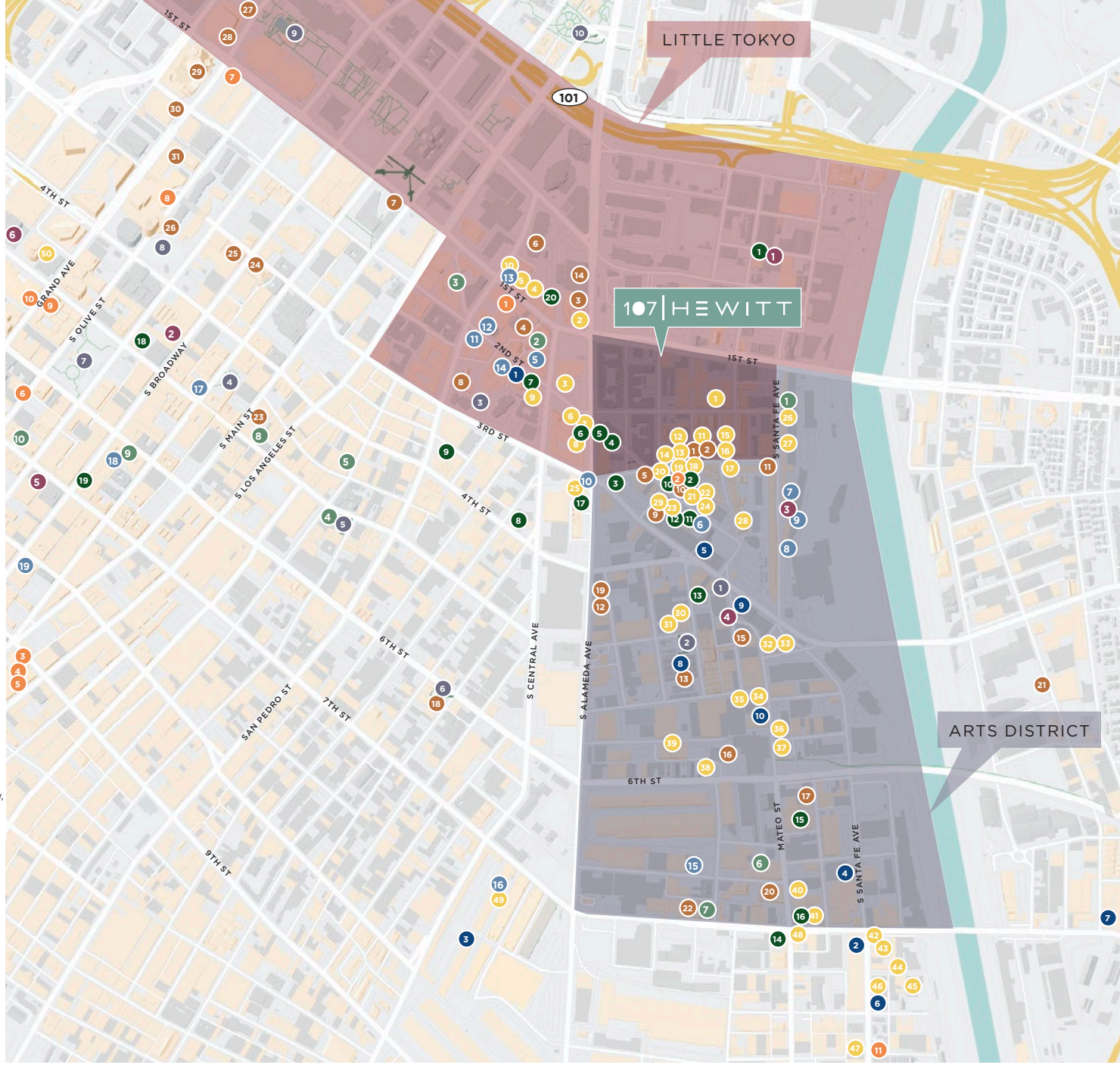
**NEWMARK**

BR  
BRIDGE  
REAL ESTATE

**JAY LUCHS**  
Vice Chairman  
310-407-6585  
jay.luchs@nmrk.com  
CA RE Lic. #01260345  
jayluchs.com

**BRIAN ABDI**  
Director  
310-275-9222  
ba@bridgerealestate.com  
CA RE Lic. #01879399

- RESTAURANTS**
- 1 Father's Office
  - 2 Chado Tea Room
  - 3 Shin-Sen-Gumi Hakata Ramen
  - 4 Marugame Monzo
  - 5 Daikokuya Little Tokyo
  - 6 Sushi Gen
  - 7 Men Oh Tokushima Ramen
  - 8 Pasta e Pasta by Allegro
  - 9 Tenno Sushi
  - 10 JIST cafe
  - 11 Manuela
  - 12 Hearts & Flame
  - 13 Prince Street Pizza
  - 14 Salt & Straw
  - 15 Camphor
  - 16 Eat Drink Americano
  - 17 Boxx Coffee Roasters Co.
  - 18 LA Cha Cha Chá
  - 19 Yunomi Handroll
  - 20 Würstküche
  - 21 Kreation Juicery & Avoholic Bar
  - 22 Loqui
  - 23 The Pie Hole
  - 24 Groundwork Coffee Co
  - 25 Shojin
  - 26 Van Læuwen Ice Cream
  - 27 Kombu Sushi
  - 28 Smoke City Char Bar
  - 29 Tsujita Artisan Noodle
  - 30 KAVIAR Los Angeles
  - 31 Urth Caffè
  - 32 Bavel
  - 33 Verve Coffee Roasters
  - 34 Girl & the Goat
  - 35 Eightfold Coffee
  - 36 Zinc Cafe & Market & Bar
  - 37 Blue Bottle Coffee
  - 38 BRERA Ristorante
  - 39 The Factory Kitchen
  - 40 AFURI ramen + dumpling LA
  - 41 PIZZANISTA!
  - 42 Bread Lounge
  - 43 kodo
  - 44 Bestia
  - 45 Damian
  - 46 Stumptown Coffee Roasters
  - 47 Maru Coffee
  - 48 Guerrilla Tacos
  - 49 Go Get Em Tiger
  - 50 71Above
- RETAIL**
- 1 The House of Woo
  - 2 SCI-Arc Art & Architecture Supply Store
  - 3 Le Labo
  - 4 Daiso
  - 5 **Japanese Village Plaza:** Blooming Art, Kools, Mokuoyobi, Monkey Pants, Sanrio, Tokyo Lifestyle, and more
  - 6 Lovestitch
  - 7 WITTMORE
  - 8 Hennessey + Ingalls
  - 9 The Benjamin Scholastic Salon
  - 10 Daiso
  - 11 RIF LA
  - 12 Popkiller Second
  - 13 BOWLS
  - 14 Shoe Palace
  - 15 Artist & Craftsman Supply
  - 16 **ROW DTLA:** Arcade, ARJ, Bodega, Cafe Dulce, Coast by Coast, Dublab & In Sheep's Clothing HIFI, KINTO, JOYBIRD, Le Vin, LVIR, OMAMimini, Shades of Grey, Shopify, Smorgasburg, and more
  - 17 The Last Bookstore
  - 18 Jumpman by Foot Locker
  - 19 Apple Tower Theatre
- NIGHTLIFE**
- 1 Boomtown Brewery
  - 2 Death & Co.
  - 3 Eightytwo
  - 4 Trully LA
  - 5 Angel City Brewery
  - 6 The Mermaid
  - 7 Wolf & Crane Bar
  - 8 High Tide
  - 9 The Escondite
  - 10 Neighborhood Winery
  - 11 Arts District Brewing Co.
  - 12 The Study
  - 13 Resident
  - 14 Everson Royce Bar
  - 15 Two Bit Circus
  - 16 Tony's Saloon
  - 17 X Lanes
  - 18 Perch
  - 19 Clifton's Republic
  - 20 Far Bar



- OFFICE**
- 1 CENTRL Office Downtown Los Angeles
  - 2 Warner Music Group
  - 3 **The Row:** Adidas, Virgin Hyperloop, J Brand, Soylent, SPACES, Fashionphile, UBTECH Robotics, WC+A, HopSkipDrive, Gardiner & Theobald, and more
  - 4 3BlackDot
  - 5 Honey
  - 6 Skunk Films
  - 7 Madhappy
  - 8 LACI
  - 9 Califa Farms
  - 10 Spotify, Gimlet, USC Roski Graduate Programs
- LODGING**
- 1 Miyako Hotel
  - 2 American Hotel
  - 3 STILE Downtown LA
  - 4 The Hoxton
  - 5 The Proper Hotel
  - 6 Hotel Per La
  - 7 Conrad Los Angeles
  - 8 Omni Los Angeles Hotel at California Plaza
  - 9 Blinnmore Los Angeles
  - 10 Hilton Checkers Los Angeles
  - 11 Soho Warehouse
- CULTURAL/ATTRACTIONS**
- 1 Over the Influence
  - 2 Hauser & Wirth
  - 3 Japanese American National Museum
  - 4 Japanese Village Plaza
  - 5 Lilli Lakich Studio
  - 6 East West Players
  - 7 Cornerstone Theater Company
  - 8 Aratani Theatre
  - 9 Art Share LA
  - 10 The Box Gallery
  - 11 Sci-Arc School of Architecture
  - 12 Royale Projects
  - 13 La Kretz Innovation Campus
  - 14 The Geffen Contemporary at MOCA
  - 15 Mouche Gallery
  - 16 LA Gun Club
  - 17 Lot 613
  - 18 333 Gallery
  - 19 The KNOW Contemporary
  - 20 The Art Reserve
  - 21 Corey Helford Gallery
  - 22 Institute of Contemporary Art, Los Angeles
  - 23 Regent Theater
  - 24 Bradbury Building
  - 25 Grand Central Market
  - 26 Angel's Flight Railway
  - 27 Ahmanson Theatre
  - 28 Dorothy Chandler Pavilion
  - 29 Walt Disney Concert Hall
  - 30 The Broad
  - 31 The Museum of Contemporary Art
- COMMUNITY**
- 1 Art District Dog Park
  - 2 Arts District Park
  - 3 James Irvine Japanese Garden at JACCC
  - 4 Spring Street Park
  - 5 San Julian Park
  - 6 Gladys Park
  - 7 Pershing Square
  - 8 Angel's Knoll
  - 9 Grand Park
  - 10 Los Angeles Union Station
- FITNESS**
- 1 Sanctuary Fitness
  - 2 Planet Fitness
  - 3 F45 Training
  - 4 ESTLR Athletics
  - 5 Function Fitness Gym Inc
  - 6 Equinox
- GROCERY**
- 1 Grow the Produce Shop
  - 2 Nijiya Market
  - 3 Marukai Market
  - 4 Green Apple Market
  - 5 Brothers Market
  - 6 Joe's Downtown Market
  - 7 La Central Market
  - 8 Village Market
  - 9 6th Street Market
  - 10 Whole Foods Market

107 | HEWITT

jayluchs.com

**For Lease**  
**310 407 6585**  
**Jay Luchs**  
Los Angeles

**NEWMARK**



**JAY LUCHS**  
Vice Chairman  
310-407-6585  
jay.luchs@nmrk.com  
CA RE Lic. #01260345  
[jayluchs.com](http://jayluchs.com)

**BRIAN ABDI**  
Director  
310-275-9222  
ba@bridgerealestate.com  
CA RE Lic. #01879399



# 107 | HEWITT

*The information contained herein has been obtained from sources deemed reliable but has not been verified and no guarantee, warranty or representation, either express or implied, is made with respect to such information. Terms of sale or lease and availability are subject to change or withdrawal without notice.*

jayluchs.com  
**For Lease**  
**310 407 6585**  
**Jay Luchs**  
Los Angeles

**NEWMARK**  
Corporate RE Lic. #01355491

**BR**  
**BRIDGE**  
REAL ESTATE

Corporate RE Lic. #01937197

**JAY LUCHS**  
Vice Chairman  
310-407-6585  
jay.luchs@nmrk.com  
CA RE Lic. #01260345  
**jayluchs.com**

**BRIAN ABDI**  
Director  
310-275-9222  
ba@bridgerealestate.com  
CA RE Lic. #01879399