

1131 MONTANA AVENUE
SANTA MONICA, CA 90403



2ND FLOOR OFFICE / SHOWROOM

JAY LUCHS

Vice Chairman

310-407-6585

jay.luchs@nmrk.com

CA RE Lic. #01260345

JAYLUCHS.COM

NEWMARK



ADDRESS

1131 Montana Avenue
Santa Monica, CA 90403

USE

2nd Floor Office/Showroom

SIZE

Suite A: ±305 SF
 Suite B: ±314 SF
 Suite C: ±188 SF
 Suite D: ±361 SF
 Suite E: ±361 SF
 Suite F: ±184 SF

Up to ±2,207 SF available
and 40 SF of storage
available for rent

RENT

Suite A: \$2,500/mo NNN
 Suite B: \$2,500/mo NNN
 Suite C: \$1,600/mo NNN
 Suite D: \$2,500/mo NNN
 Suite E: \$2,500/mo NNN
 Suite F: \$1,600/mo NNN

NNN: ±\$1.45 PSF/mo

INTERIOR PHOTOS



Suite A



Suite D



Suite B



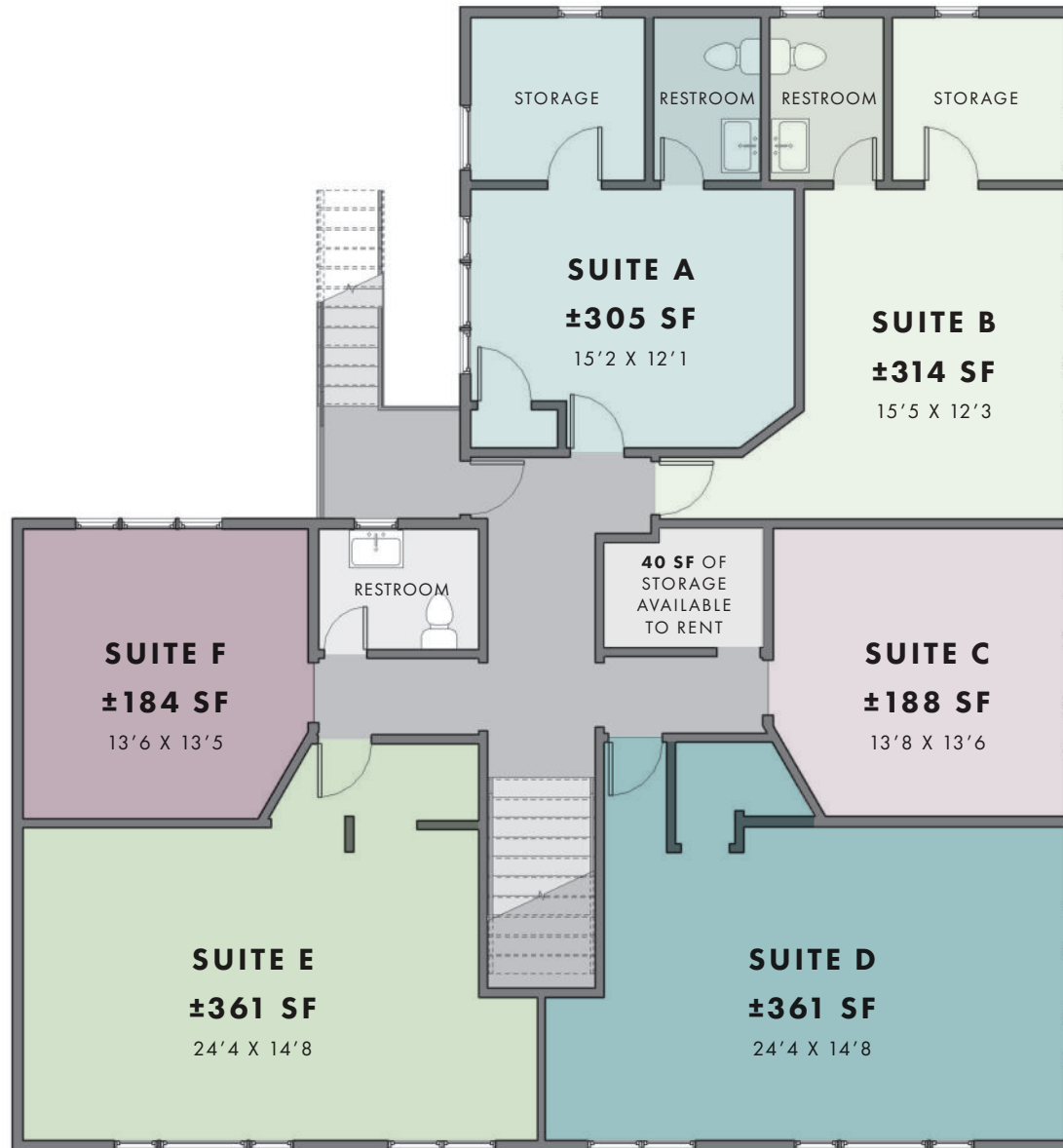
Suite C



Suite E

FLOOR PLAN

Up to ±2,207 SF available



12TH STREET

MONTANA AVENUE



Annenberg Community Beach House

SAN VICENTE BLVD

MONTANA AVE

OCEAN AVE

4TH ST

3RD ST PROMENADE

12TH ST

SANTA MONICA BLVD

PICO BLVD

LINCOLN BLVD

1131 MONTANA AVENUE
SANTA MONICA, CA 90403

Sweet Lady Jane

Whole Foods Market

R+D Kitchen

Forma Restaurant & Cheese Bar

The Courtyard Kitchen

La La Land Kind Cafe

Williams-Sonoma

Kreation Kafe & Juicery

Brentwood General Store

Rosti Tuscan Kitchen

Caffe Luxxe

Father's Office

LA Puglia

Tartine

Target

Primo Passo Coffee

Rustic Canyon

Dunkin

Mélisse

Huckleberry Cafe

Santa Monica Proper Hotel

Randy's Donuts

Bay Cities Deli

Demitasse

Sidecar Doughnuts

Shake Shack

Tocaya Modern Mexican

Fairmont Miramar Hotel & Bungalows

Orto

Tar & Roses

Elephante

The Misfits Bar & Restaurant

BOA Steakhouse

Target

Mel's Drive-In

Santa Monica Place
Louis Vuitton, Nordstrom, Nike, Cayton Children's Museum, The Cheesecake Factory, Rimowa, Rolex, Tesla, Tiffany & Co, True Food Kitchen, TUMI, and more

Kazunori

Santa Monica Pier

Shutters on the Beach

Hotel Casa del Mar

Cobi's

Urth Caffe

Perry's Cafe & Beach Rentals

Erewhon

Busby's West

Trader Joe's

Uppers Cafe & Bakeshop

1131 MONTANA AVENUE

SANTA MONICA, CA 90403



The information contained herein has been obtained from sources deemed reliable but has not been verified and no guarantee, warranty or representation, either express or implied, is made with respect to such information. Terms of sale or lease and availability are subject to change or withdrawal without notice.

Corporate RE Lic. #01355491

JAY LUCHS

Vice Chairman

310-407-6585

jay.luchs@nmrk.com

CA RE Lic. #01260345

JAYLUCHS.COM

NEWMARK