



114
SOUTH
ROBERTSON
BOULEVARD

RETAIL STOREFRONT

JAY LUCHS
GENNY CHANG
NEWMARK

Vice Chairman
Managing Director
JAYLUCHS.COM

310-407-6585
310-407-6588

jay.luchs@nrmk.com
genny.chang@nrmk.com

CA RE Lic. #01260345
CA RE Lic. #01467375

jayluchs.com
For Lease
310 407 6585
Jay Luchs
Los Angeles



ADDRESS

114 S. Robertson Boulevard
Los Angeles, CA 90069

USE

Retail

SIZE

±1,265 SF

AVAILABLE

Immediately

RENT

Available upon request

NNN

Available upon request

HIGHLIGHTS

- Prime location surrounded by high-end retail and restaurants

JAY LUCHS
GENNY CHANG
NEWMARK

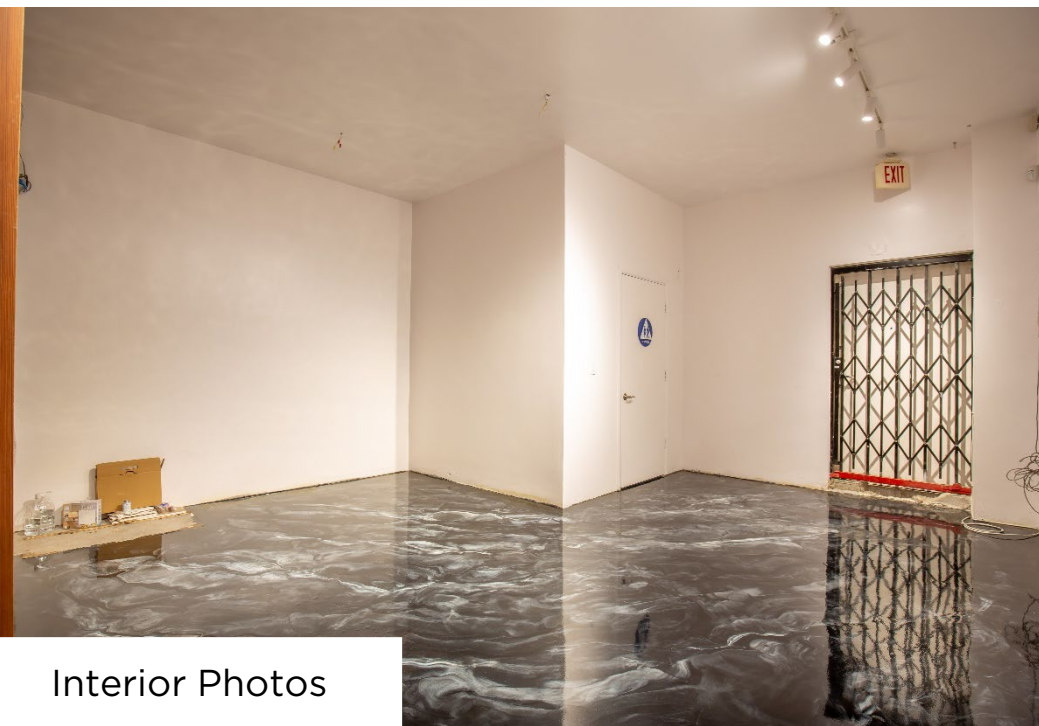
Vice Chairman
Managing Director
JAYLUCHS.COM

310-407-6585
310-407-6588

jay.luchs@nrmk.com
genny.chang@nrmk.com

CA RE Lic. #01260345
CA RE Lic. #01467375

jayluchs.com
For Lease
310 407 6585
Jay Luchs
Los Angeles



Interior Photos

JAY LUCHS
GENNY CHANG
NEWMARK

Vice Chairman
Managing Director
JAYLUCHS.COM

310-407-6585
310-407-6588

jay.luchs@nrmk.com
genny.chang@nrmk.com

CA RE Lic. #01260345
CA RE Lic. #01467375

jayluchs.com
For Lease
310 407 6585
Jay Luchs
Los Angeles



Nana Jacqueline

CURVE

Arclinea

Worldwide Production Agency

Visionnaire

ROBERTSON PLAZA

THE HENRY



BOXUNION

Sushi Tama

antoniolupi

HermanMiller

B&B

BANG & OLUFSEN

COUP'D'ETAT

ALDEN DRIVE

For Lease

For Lease

For Sale



For Lease

Pearline Health

Shima

Office

Northern Wide Plank

Crane

Porcellina

Ricca

G:50



For Lease

Neutrapedic

Leased



Eternity Modern

Molteni & C | **Dada**

Cassina

JAMES PERSE - Robertson House

DUXIANA



Armani Casa

Development

Nous Model Management/ Nu Talent Agency



kitson Kids

ALDEN DRIVE

Altman Brothers office

Offices (2nd Floor)



For Lease - Jay



Maker & Son

kitson

ROBERTSON BOULEVARD PUBLIC PARKING

Youthfill MD



GEORGETOWN CUPCAKE

Under Construction

bulthaup

N. ROBERTSON BOULEVARD

S. ROBERTSON BOULEVARD

The information contained herein has been obtained from sources deemed reliable but has not been verified and no guarantee, warranty or representation, either express or implied, is made with respect to such information. Terms of sale or lease and availability are subject to change or withdrawal without notice.

Corporate RE Lic #01355491

JAY LUCHS
GENNY CHANG
NEWMARK

Vice Chairman
Managing Director
JAYLUCHS.COM

310-407-6585
310-407-6588

jay.luchs@nrmk.com
genny.chang@nrmk.com

CA RE Lic. #01260345
CA RE Lic. #01467375

jayluchs.com
For Lease
310 407 6585
Jay Luchs
 Los Angeles