

1314 WILSHIRE BOULEVARD

SANTA MONICA, CALIFORNIA 90403



RETAIL | CREATIVE | MEDICAL
FREE STANDING SINGLE-TENANT BUILDING
FOR LEASE IN SANTA MONICA

NEWMARK



JAY LUCHS
Vice Chairman
t 310-407-6585
jay.luchs@nrmk.com
CA RE Lic. #01260345
jayluchs.com

DANIEL CHIPRUT
Executive Vice President
t 310-800-7955
daniel@cag-re.com
CA RE Lic. #01808709
danielchiprut.com

STEVEN SALAS
Senior Managing Director
t 310-407-6569
steven.salas@nrmk.com
CA RE Lic. #01232955

JAMES NUGENT
Associate
t 310-407-6584
james.nugent@nrmk.com
CA RE Lic. #02218437



1314 WILSHIRE BOULEVARD
SANTA MONICA, CALIFORNIA 90403

HIGHLIGHTS

- High visibility landmark location on desirable Wilshire Boulevard
- Excellent signage and visibility
- High ceilings from approximately 13 to 50 ft
- Nationally recognized hospitals - one block from UCLA Medical Center and five blocks from Providence Saint John's
- Neighbors include: Vons, Rite Aid, Fidelity, Ulta Beauty, Target, Erewhon, New Balance, Whole Foods, Trader Joe's, and many other established retailers and restaurants
- Unparalleled access to Santa Monica retail amenities
- Largest contiguous block of medical space in Santa Monica
- Approximately 28,386 cars pass this location daily

ADDRESS

1314 Wilshire Boulevard
Santa Monica, CA 90403

USE

Retail/Creative Office/Medical

SIZE

Ground Floor: ±10,036 RSF
Second Floor: ±8,170 RSF
Total: ±18,206 RSF

AVAILABLE

Immediately

RENT

\$6.50 PSF per month NNN

NNN

±\$0.62 PSF per month

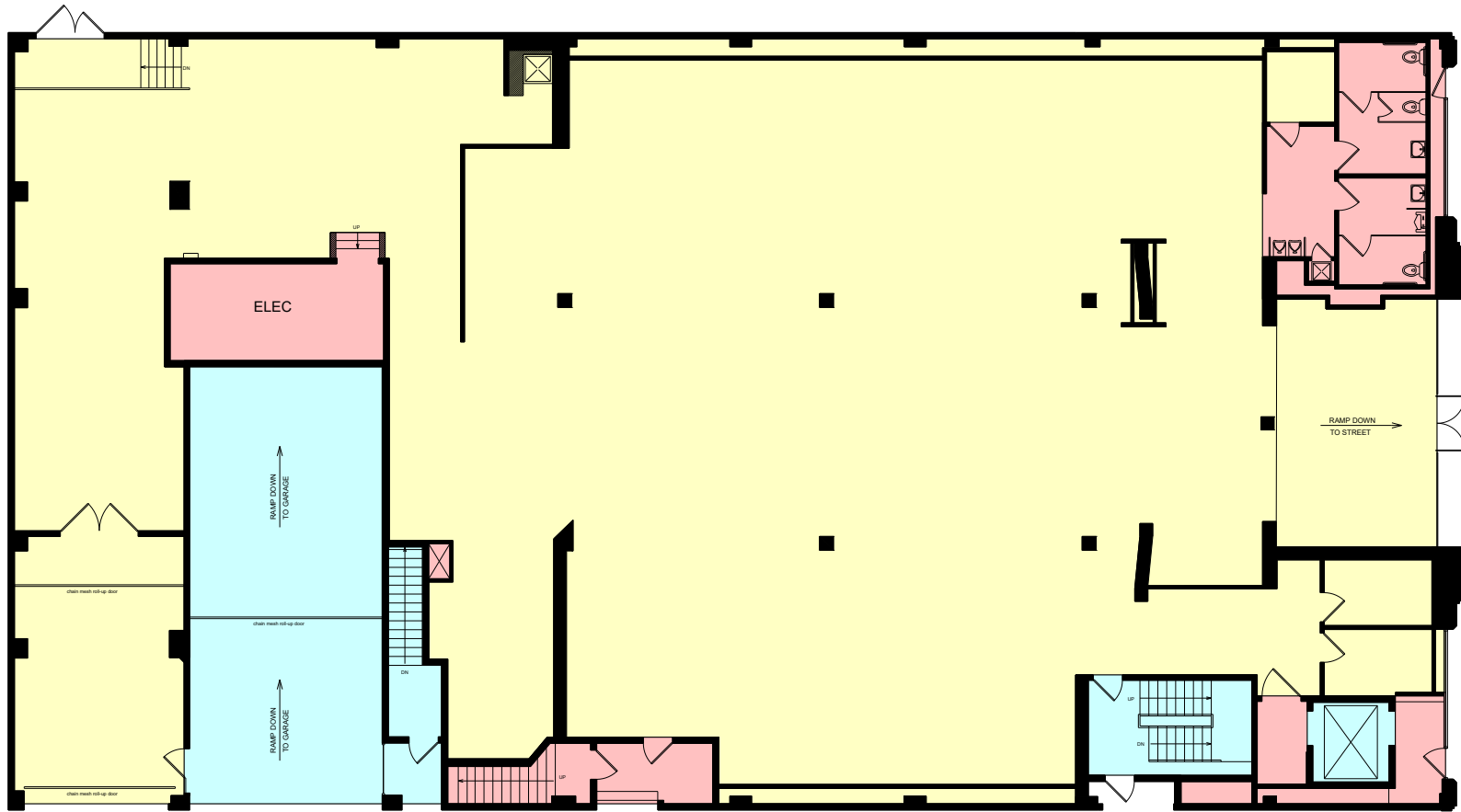
PARKING

20 (existing) to ±40 (with lifts) covered subterranean spaces at \$200/month
±50 surface spaces available in the City lot directly behind the Building at posted daily/monthly rates

Source: Traffic Count according to TrafficMetrix, Costar 2022

FLOOR PLAN

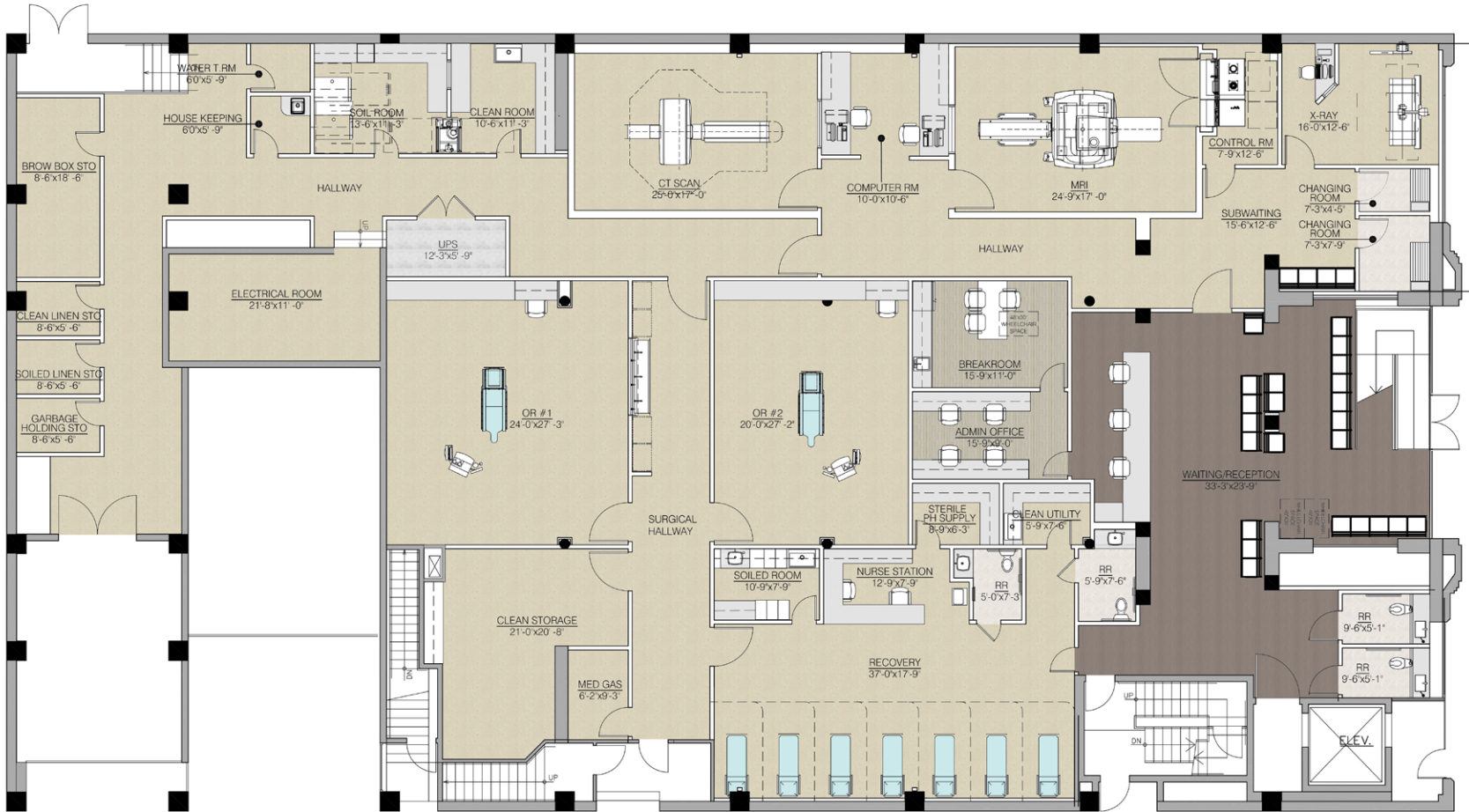
1ST FLOOR | ±10,036 RSF



WILSHIRE BOULEVARD

HYPOTHETICAL MEDICAL FLOOR PLAN

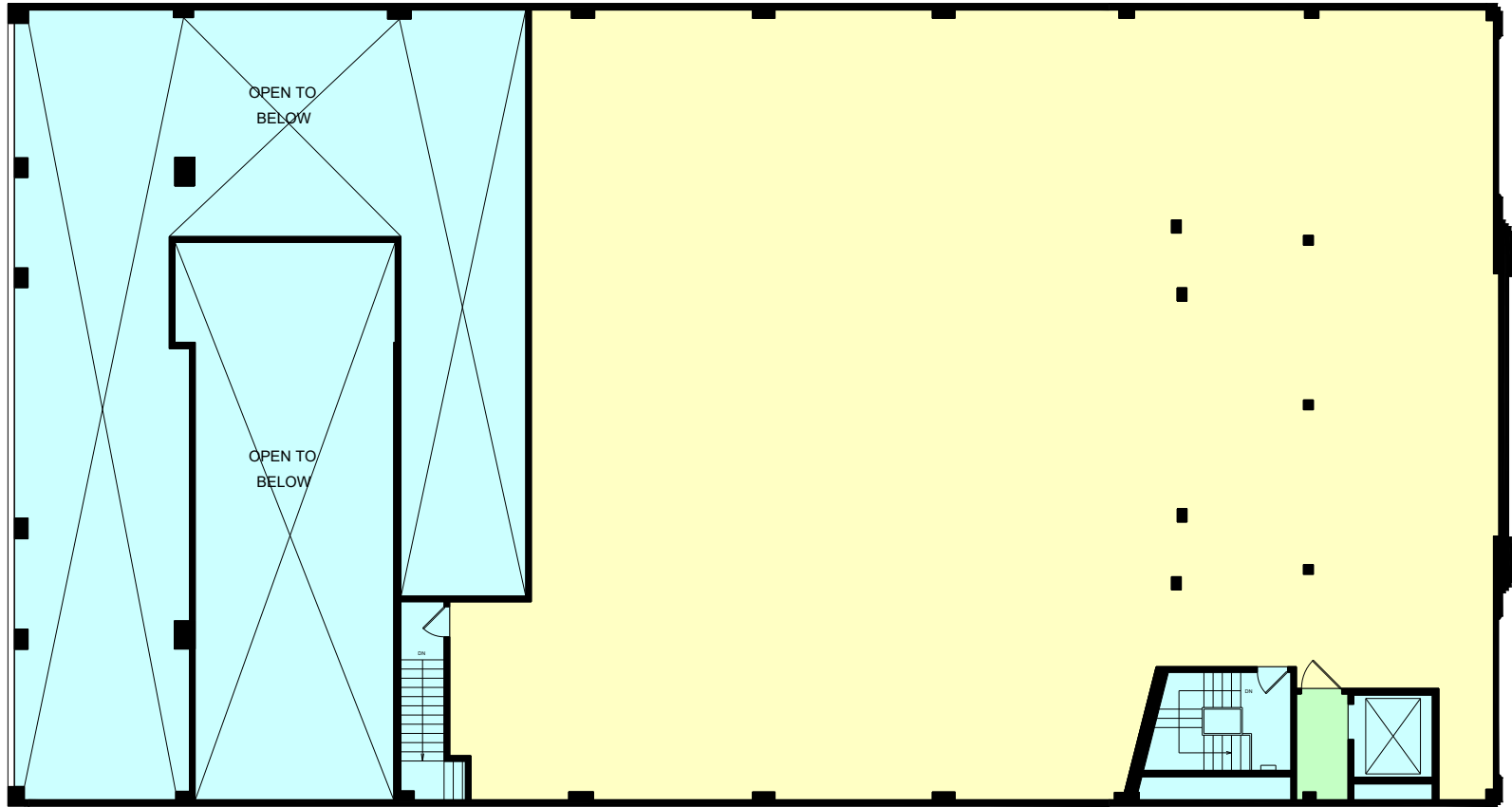
1ST FLOOR | ±10,036 RSF



WILSHIRE BOULEVARD

FLOOR PLAN

2ND FLOOR | ±8,170 RSF



WILSHIRE BOULEVARD

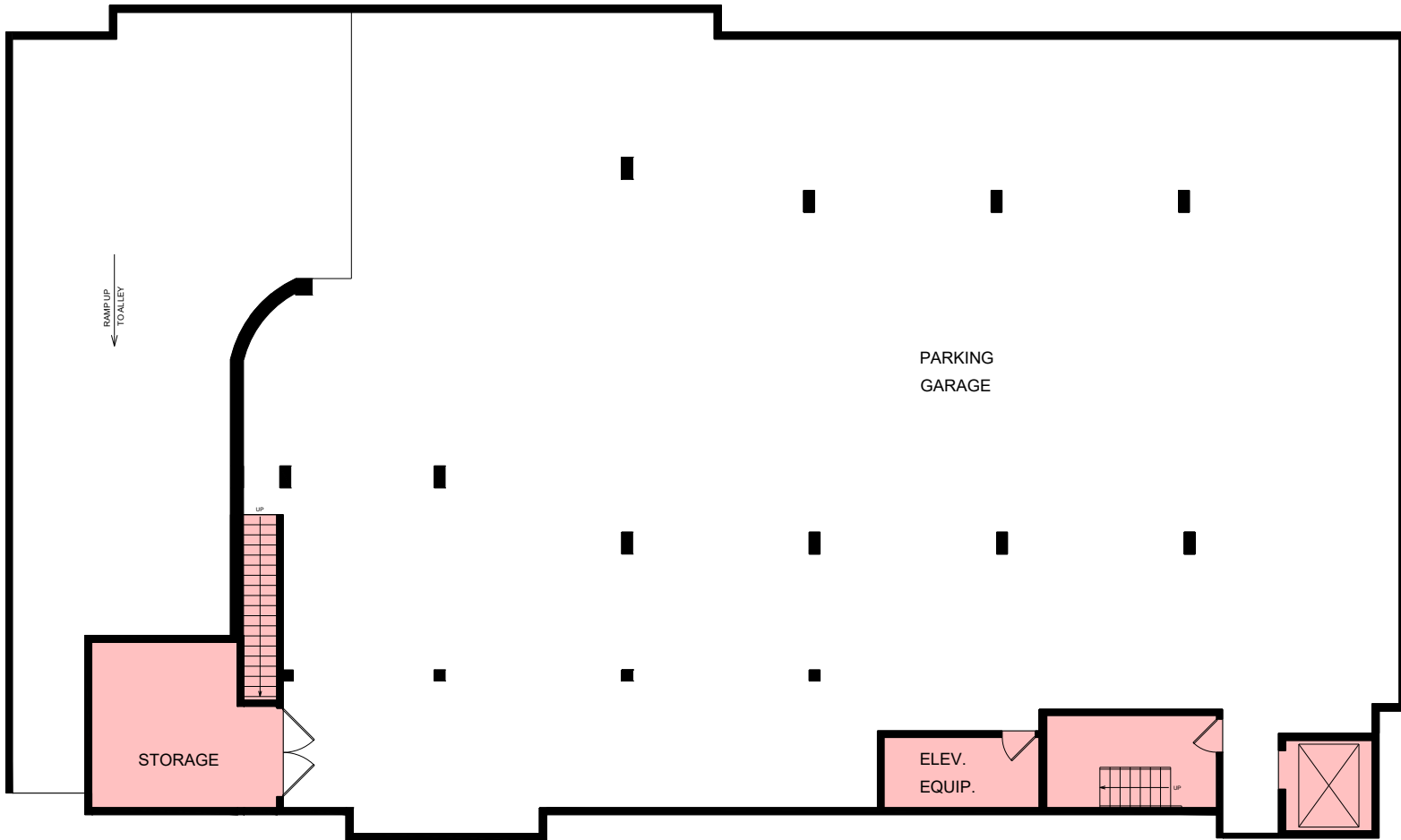
HYPOTHETICAL MEDICAL FLOOR PLAN

2ND FLOOR | ±8,170 RSF

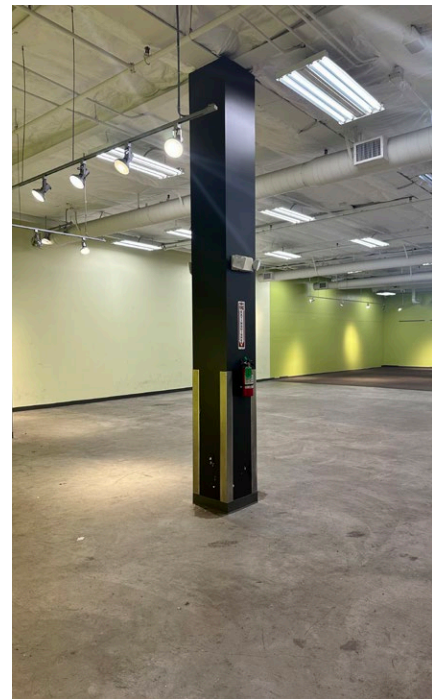
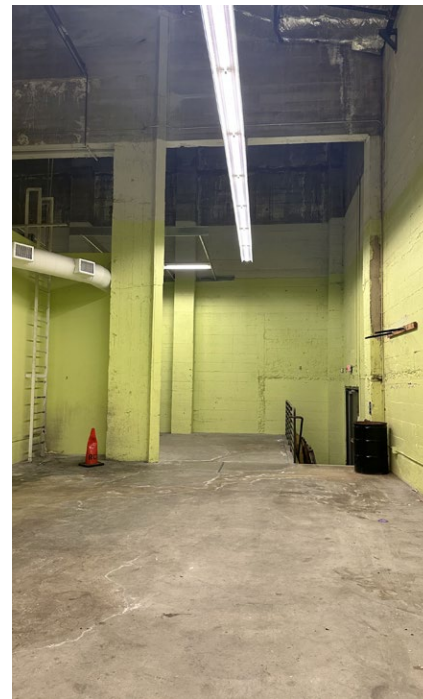
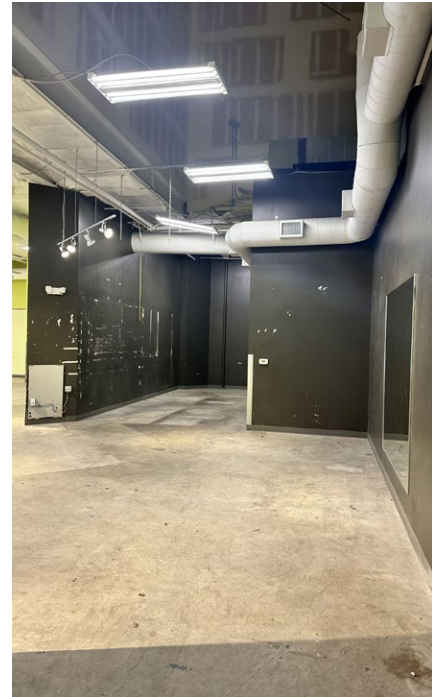


WILSHIRE BOULEVARD

PARKING GARAGE



PHOTOS





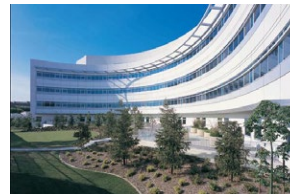
NEARBY MEDICAL CENTERS

UCLA SANTA MONICA MEDICAL CENTER



UCLA Santa Monica Medical Center serves as the cornerstone of UCLA Health's Santa Monica medical campus. The 281-bed, full-service medical center provides the complete continuum of healthcare services, from prenatal and neonatal care to geriatric medicine, in a technologically advanced and welcoming facility. It combines the expertise of an academic medical center with the accessibility of a community hospital to offer patients the best of both medical worlds.

SAINT JOHN'S HEALTH CENTER



For over 75 years Saint John's Health Center has provided the Los Angeles community an amazing array of medical specialties and sub-specialties. Their services are provided with an unparalleled standard of care, and their dedication to each and every patient has earned a reputation for clinical excellence and award-winning care.



1314 WILSHIRE BOULEVARD

SANTA MONICA, CALIFORNIA 90403



The information contained herein has been obtained from sources deemed reliable but has not been verified and no guarantee, warranty or representation, either express or implied, is made with respect to such information. Terms of sale or lease and availability are subject to change or withdrawal without notice.

Corporate License #01355491

NEWMARK



JAY LUCHS

Vice Chairman
t 310-407-6585
jay.luchs@nrmk.com
CA RE Lic. #01260345
jayluchs.com

DANIEL CHIPRUT

Executive Vice President
t 310-800-7955
daniel@cag-re.com
CA RE Lic. #01808709
danielchiprut.com

STEVEN SALAS

Senior Managing Director
t 310-407-6569
steven.salas@nrmk.com
CA RE Lic. #01232955

JAMES NUGENT

Associate
t 310-407-6584
james.nugent@nrmk.com
CA RE Lic. #02218437