

14755 VENTURA BOULEVARD

SHERMAN OAKS, CA 91403



jayluchs.com
For Lease
310 407 6585
Jay Luchs
Los Angeles

NEWMARK
PACIFIC

∞ | AA INVESTMENTS

JAY LUCHS
Vice Chairman
T 310-407-6585
jay.luchs@nmrk.com
CA RE Lic. #01260345
JAYLUCHS.COM

GAVIN KETCHUM
Director
T 310-407-6593
gavin.ketchum@nmrk.com
CA RE Lic. #01929170

AMIR ARAGHI
Principal
T 818-648-0918
amiraraghi2@gmail.com
CA RE Lic. #01857447



ADDRESS

14755 Ventura Boulevard
Sherman Oaks, CA 91403

SIZE

±5,890 SF (Divisible)

USE

Retail | Office | Possible
Medical Use

RENT

Available upon Request

PARKING

Surface and subterranean
parking available

AVAILABLE

Immediately

jayluchs.com
For Lease
310 407 6585
Jay Luchs
Los Angeles

NEWMARK
PACIFIC

AA INVESTMENTS

JAY LUCHS

Vice Chairman
T 310-407-6585
jay.luchs@nrmk.com
CA RE Lic. #01260345
JAYLUCHS.COM

GAVIN KETCHUM

Director
T 310-407-6593
gavin.ketchum@nrmk.com
CA RE Lic. #01929170

AMIR ARAGHI

Principal
T 818-648-0918
amiraraghi2@gmail.com
CA RE Lic. #01857447



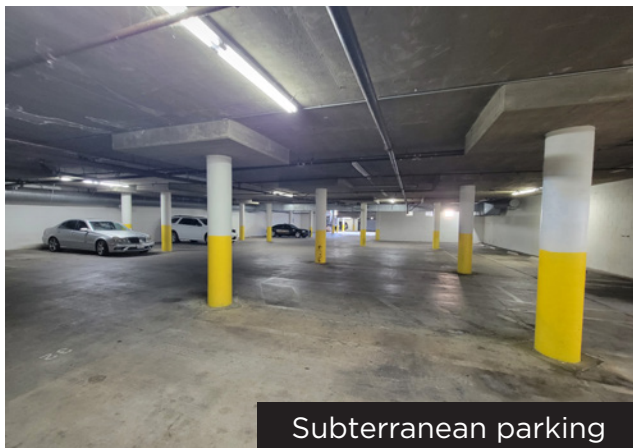
Ventura Blvd entrance



Willis Ave entrance



Surface parking along Willis Ave



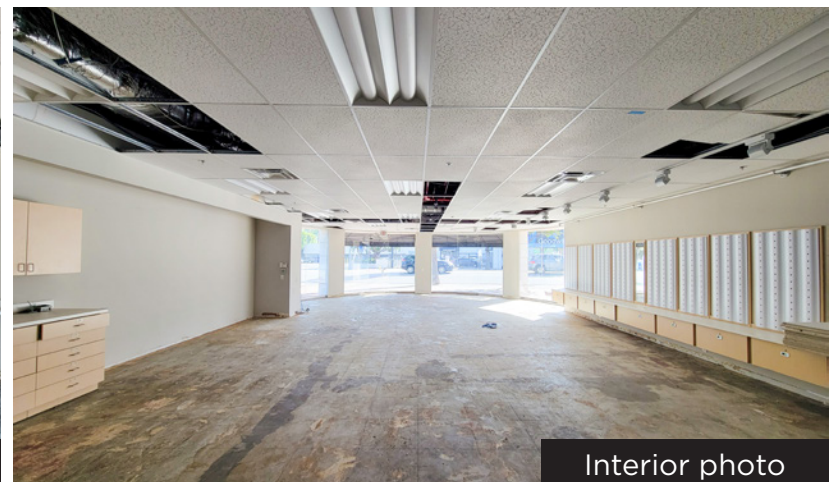
Subterranean parking



Interior photo



Interior photo



Interior photo

HIGHLIGHTS

- Open floorplan
- Large display windows with rounded entry
- Dual entrances with access to Ventura Blvd and Willis Ave
- Signage available on Ventura Blvd
- Neighboring tenants include: Anejo Cantina and Grill, Jimmy Au's For Men 5'8 & Under, Party City, Exer Urgent Care, CVS, Fazio Cleaners, and Bank of America
- Close proximity to 101 and 405 Freeways
- Conveniently located near retail and restaurants on Ventura Blvd

jayluchs.com
For Lease
310 407 6585
Jay Luchs
 Los Angeles

NEWMARK
 PACIFIC

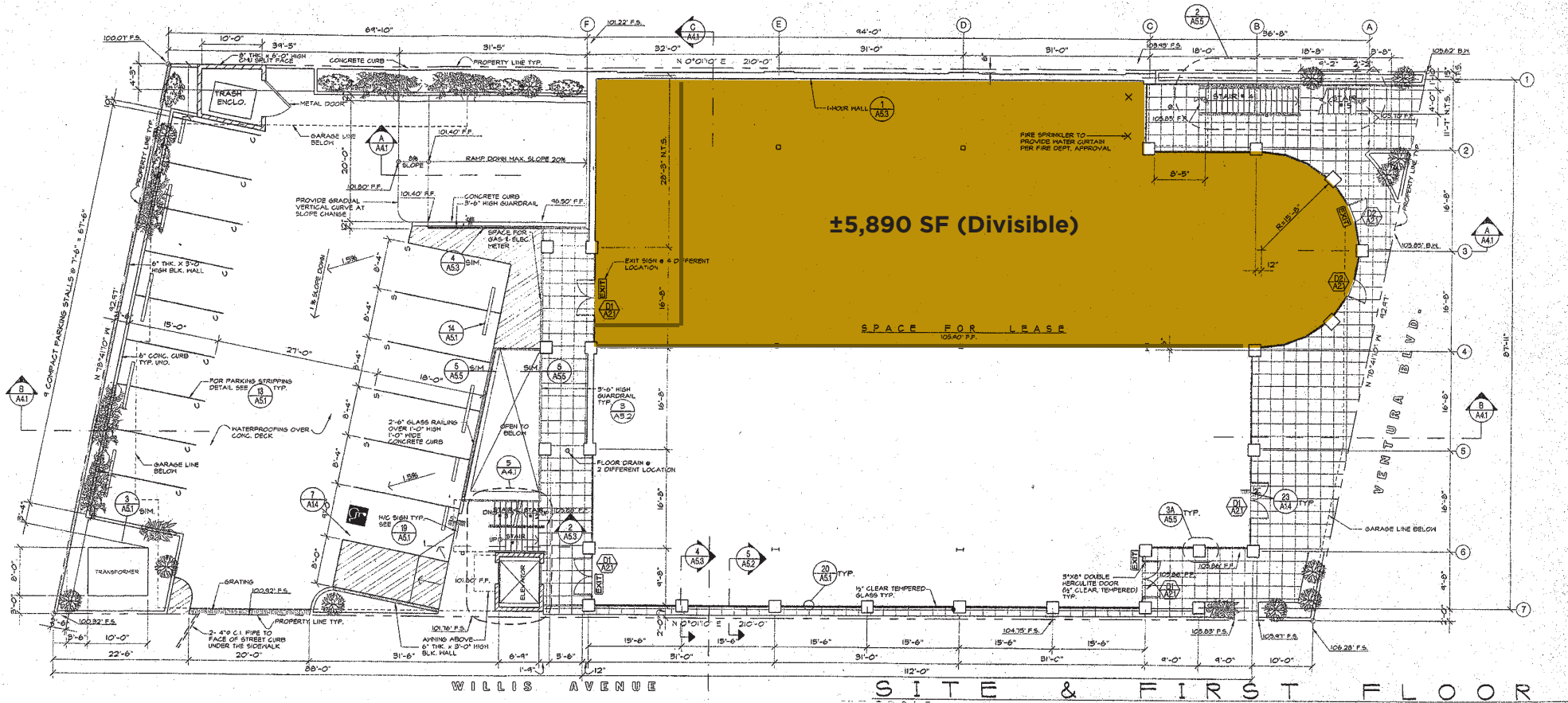
AA INVESTMENTS

JAY LUCHS
 Vice Chairman
 T 310-407-6585
 jay.luchs@nmrk.com
 CA RE Lic. #01260345
JAYLUCHS.COM

GAVIN KETCHUM
 Director
 T 310-407-6593
 gavin.ketchum@nmrk.com
 CA RE Lic. #01929170

AMIR ARAGHI
 Principal
 T 818-648-0918
 amiraraghi2@gmail.com
 CA RE Lic. #01857447

FLOOR PLAN



*NOT TO SCALE. This information is approximate. We believe to be reliable, but we make no representations or warranties, expressed or implied, as to the accuracy of the information. Buyer or Lessee must verify the information and bears all risk for any inaccuracies.

All information or design indicated hereon is preliminary only. It is subject to modification.

jayluchs.com
For Lease
310 407 6585
Jay Luchs
 Los Angeles

NEWMARK
 PACIFIC

AA INVESTMENTS

JAY LUCHS
 Vice Chairman
 T 310-407-6585
 jay.luchs@nmrk.com
 CA RE Lic. #01260345
JAYLUCHS.COM

GAVIN KETCHUM
 Director
 T 310-407-6593
 gavin.ketchum@nmrk.com
 CA RE Lic. #01929170

AMIR ARAGHI
 Principal
 T 818-648-0918
 amiraraghi2@gmail.com
 CA RE Lic. #01857447

AMENITY MAP



The information contained herein has been obtained from sources deemed reliable but has not been verified and no guarantee, warranty or representation, either express or implied, is made with respect to such information. Terms of sale or lease and availability are subject to change or withdrawal without notice.

jayluchs.com
For Lease
310 407 6585
Jay Luchs
 Los Angeles

NEWMARK
 PACIFIC
 Corporate RE Lic. #01796698

AA INVESTMENTS

JAY LUCHS
 Vice Chairman
 T 310-407-6585
 jay.luchs@nrmk.com
 CA RE Lic. #01260345
JAYLUCHS.COM

GAVIN KETCHUM
 Director
 T 310-407-6593
 gavin.ketchum@nrmk.com
 CA RE Lic. #01929170

AMIR ARAGHI
 Principal
 T 818-648-0918
 amiraraghi2@gmail.com
 CA RE Lic. #01857447