

1650 Euclid Street Santa Monica, CA 90404



JAY LUCHS
CARLY GELLER
JAMES NUGENT
NEWMARK

Vice Chairman
Director - Jay Luchs Group
Associate
JAYLUCHS.COM

310-407-6585
310-593-0760
310-407-6584

jay.luchs@nmrk.com
carly.geller@nmrk.com
james.nugent@nmrk.com

CA RE Lic. #01260345
CA RE Lic. #02153582
CA RE Lic. #02218437

jayluchs.com
For Lease
310 407 6585
Jay Luchs
Los Angeles



ADDRESS

1650 Euclid Street
Santa Monica, CA 90404

RENT

Available upon Request

USE

Retail/Restaurant

HIGHLIGHTS

- Open layout
- Floor to ceiling windows
- Concrete flooring
- Patio area
- Multiple entrances
- Additional space can be provided

SIZE

Ground Floor: ±600 SF
Patio: ±400 SF
Total: ±1,000 SF

JAY LUCHS
CARLY GELLER
JAMES NUGENT
NEWMARK

Vice Chairman
Director - Jay Luchs Group
Associate
JAYLUCHS.COM

310-407-6585
310-593-0760
310-407-6584

jay.luchs@nrmk.com
carly.geller@nrmk.com
james.nugent@nrmk.com

CA RE Lic. #01260345
CA RE Lic. #02153582
CA RE Lic. #02218437

jayluchs.com
For Lease
310 407 6585
Jay Luchs
Los Angeles



JAY LUCHS
CARLY GELLER
JAMES NUGENT
NEWMARK

Vice Chairman
Director - Jay Luchs Group
Associate
JAYLUCHS.COM

310-407-6585
310-593-0760
310-407-6584

jay.luchs@nrmk.com
carly.geller@nrmk.com
james.nugent@nrmk.com

CA RE Lic. #01260345
CA RE Lic. #02153582
CA RE Lic. #02218437

jayluchs.com
For Lease
310 407 6585
Jay Luchs
Los Angeles

Interior and Patio Photos



JAY LUCHS
CARLY GELLER
JAMES NUGENT
NEWMARK

Vice Chairman
Director - Jay Luchs Group
Associate
JAYLUCHS.COM

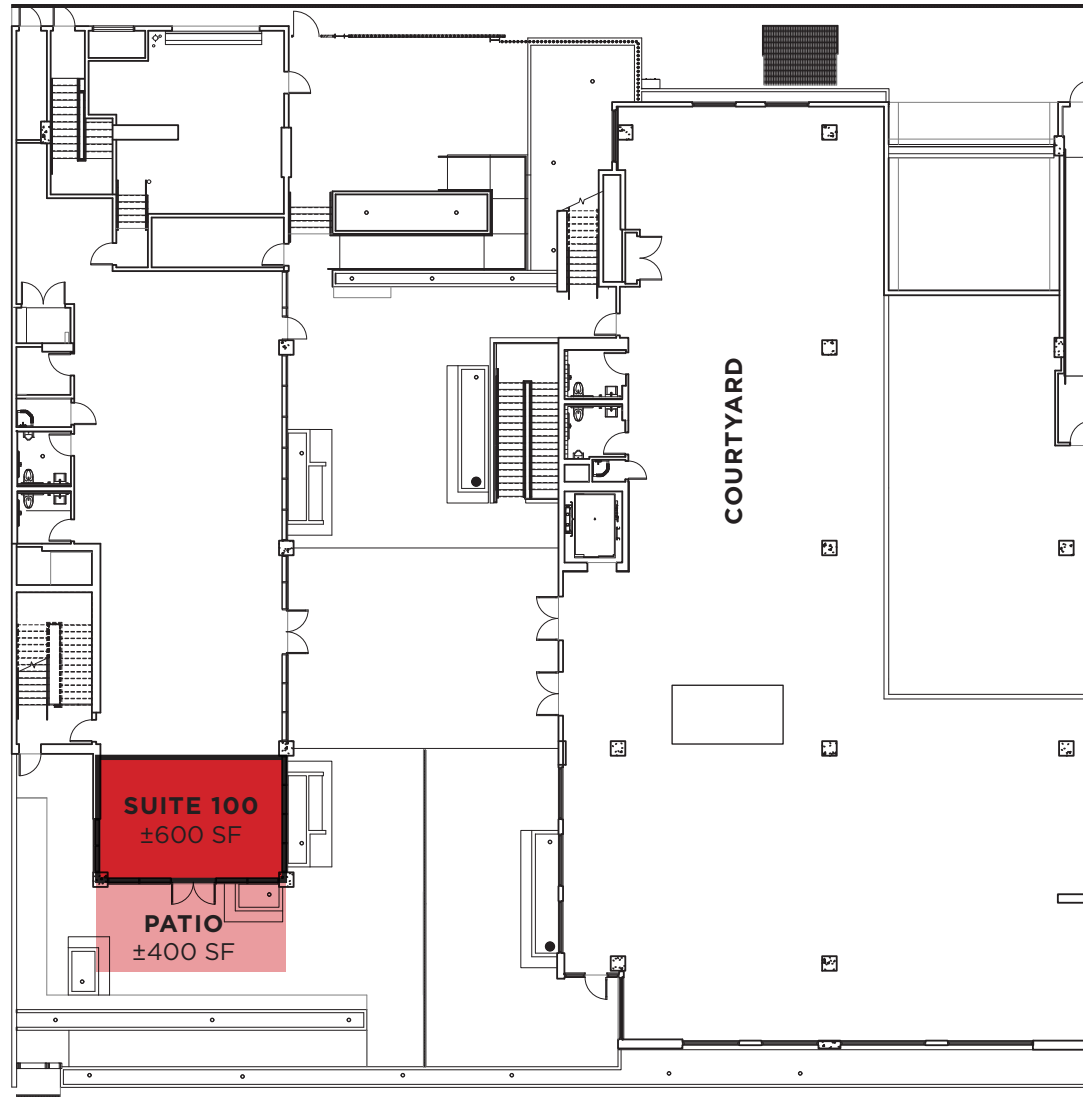
310-407-6585
310-593-0760
310-407-6584

jay.luchs@nrmk.com
carly.geller@nrmk.com
james.nugent@nrmk.com

CA RE Lic. #01260345
CA RE Lic. #02153582
CA RE Lic. #02218437

jayluchs.com
For Lease
310 407 6585
Jay Luchs
Los Angeles

12TH COURT ALLEY



EUCLID STREET

*Additional space can be provided

JAY LUCHS
CARLY GELLER
JAMES NUGENT
NEWMARK

Vice Chairman
Director - Jay Luchs Group
Associate
JAYLUCHS.COM

310-407-6585
310-593-0760
310-407-6584

jay.luchs@nrmk.com
carly.geller@nrmk.com
james.nugent@nrmk.com

CA RE Lic. #01260345
CA RE Lic. #02153582
CA RE Lic. #02218437

jayluchs.com
For Lease
310 407 6585
Jay Luchs
Los Angeles

Area Map



JAY LUCHS
CARLY GELLER
JAMES NUGENT
NEWMARK

Vice Chairman
 Director - Jay Luchs Group
 Associate
JAYLUCHS.COM

310-407-6585
 310-593-0760
 310-407-6584

jay.luchs@nrmk.com
 carly.geller@nrmk.com
 james.nugent@nrmk.com

CA RE Lic. #01260345
 CA RE Lic. #02153582
 CA RE Lic. #02218437

jayluchs.com

For Lease
310 407 6585

Jay Luchs
 Los Angeles



SANTA
MONICA
PIER
1.4 miles | ±9 min

SANTA
MONICA
PLACE
1.0 mile | ±6 min

DOWNTOWN
SANTA MONICA
1.2 miles | ±7 min

The information contained herein has been obtained from sources deemed reliable but has not been verified and no guarantee, warranty or representation, either express or implied, is made with respect to such information. Terms of sale or lease and availability are subject to change or withdrawal without notice.

JAY LUCHS
CARLY GELLER
JAMES NUGENT
NEWMARK

Vice Chairman
Director - Jay Luchs Group
Associate
JAYLUCHS.COM

310-407-6585
310-593-0760
310-407-6584

jay.luchs@nrmk.com
carly.geller@nrmk.com
james.nugent@nrmk.com

CA RE Lic. #01260345
CA RE Lic. #02153582
CA RE Lic. #02218437

Corporate RE Lic. #01355491

jayluchs.com
For Lease
310 407 6585
Jay Luchs
Los Angeles