



208-210 N. CANON DRIVE
BEVERLY HILLS, CA 90210

*Rendering

JAY LUCHS
GAVIN KETCHUM
CARLY GELLER
NEWMARK
PACIFIC

Executive Vice Chairman
Director
Director
JAYLUCHS.COM

310-407-6585
310-407-6593
310-593-0760

jay.luchs@nrmk.com
gavin.ketchum@nrmk.com
carly.geller@nrmk.com

CA RE Lic. #01260345
CA RE Lic. #01929170
CA RE Lic. #02153582

jayluchs.com
For Lease
310 407 6585
Jay Luchs
Los Angeles



*Digitally altered image

208-210 N. CANON DRIVE EXISTING BUILDING

JAY LUCHS
GAVIN KETCHUM
CARLY GELLER
NEWMARK
PACIFIC

Executive Vice Chairman
Director
Director
JAYLUCHS.COM

310-407-6585
310-407-6593
310-593-0760

jay.luchs@nrmk.com
gavin.ketchum@nrmk.com
carly.geller@nrmk.com

CA RE Lic. #01260345
CA RE Lic. #01929170
CA RE Lic. #02153582

jayluchs.com
For Lease
310 407 6585
Jay Luchs
Los Angeles

USE
Retail/Restaurant

SIZE
208 N. Canon Drive
Ground: ±3,916 SF

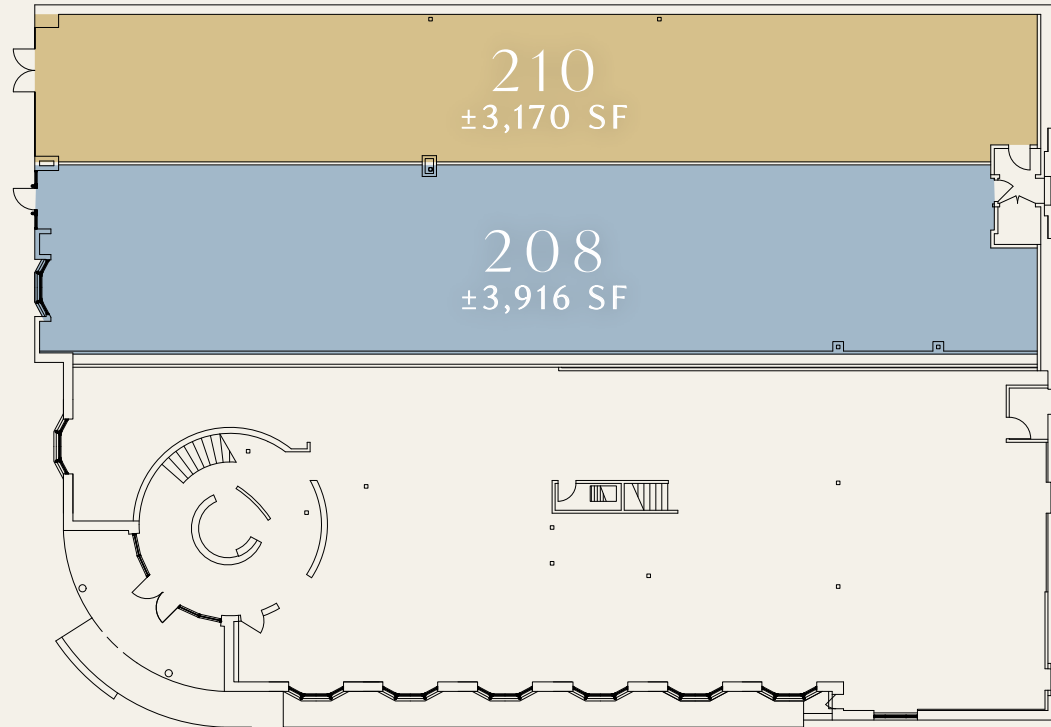
AVAILABLE
Arranged

RENT
Available upon Request

210 N. Canon Drive
Ground: ±3,170 SF
Can be combined to ±7,086 SF
*Potential for up to 16,695 SF March 2027

PARKING
Adjacent monthly parking options available

GROUND FLOOR



JAY LUCHS
GAVIN KETCHUM
CARLY GELLER
NEWMARK
PACIFIC

Executive Vice Chairman
Director
Director
JAYLUCHS.COM

310-407-6585
310-407-6593
310-593-0760

jay.luchs@nmrk.com
gavin.ketchum@nmrk.com
carly.geller@nmrk.com

CA RE Lic. #01260345
CA RE Lic. #01929170
CA RE Lic. #02153582

jayluchs.com
For Lease
310 407 6585
Jay Luchs
Los Angeles

THE
MAYBOURNE
BEVERLY HILLS

MARU COFFEE®



Total Population
2025

±30,983



Total Daytime
Population

±82,690



Median
Age

43.4



Average Household
Income

\$196,292



Median
Home Value

\$2 Million

Demographics: Within 1 mile, ESRI 2025

JAY LUCHS
GAVIN KETCHUM
CARLY GELLER
NEWMARK
PACIFIC

Executive Vice Chairman
Director
Director
JAYLUCHS.COM

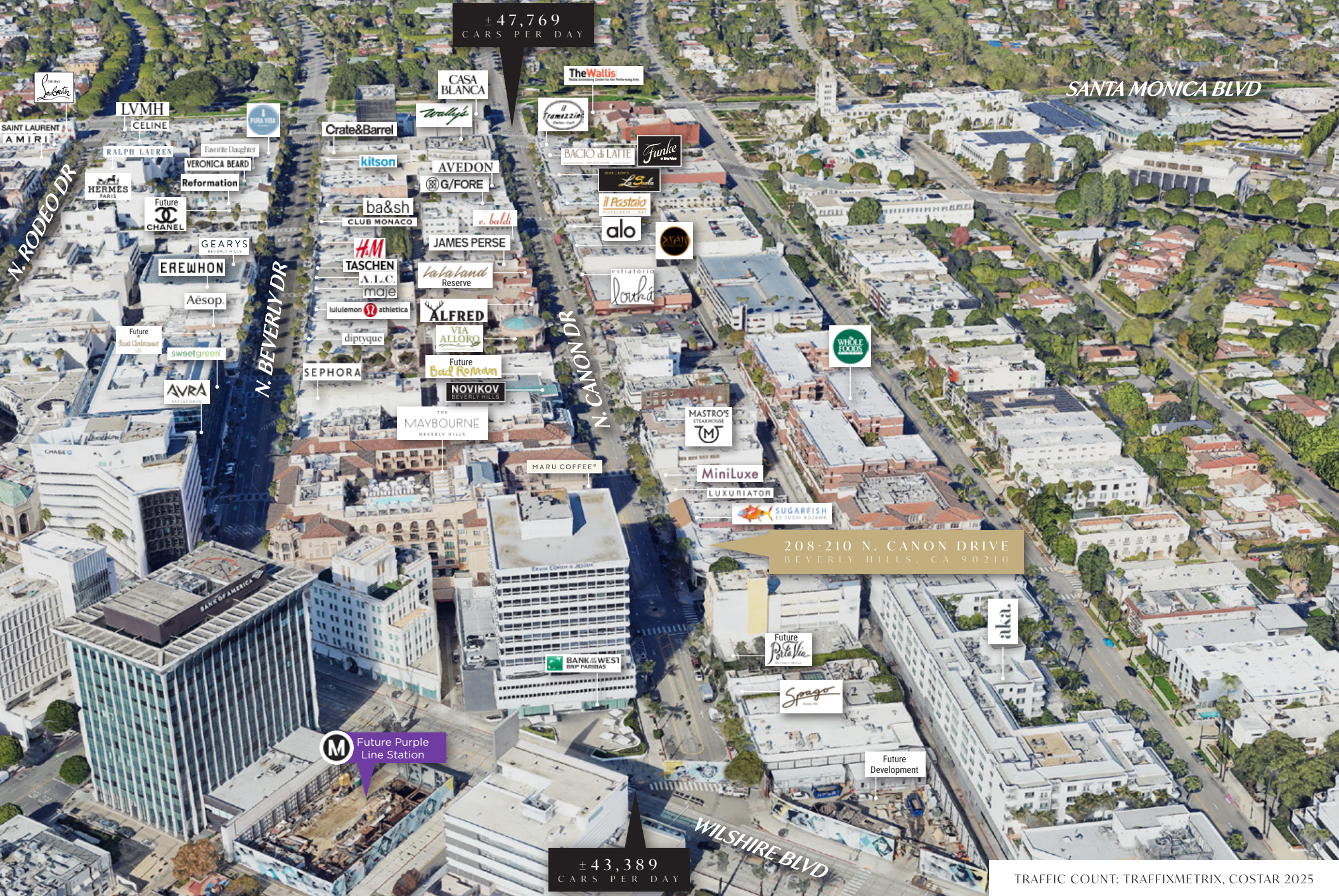
310-407-6585
310-407-6593
310-593-0760

jay.luchs@nmrk.com
gavin.ketchum@nmrk.com
carly.geller@nmrk.com

CA RE Lic. #01260345
CA RE Lic. #01929170
CA RE Lic. #02153582

jayluchs.com
For Lease
310 407 6585
Jay Luchs
Los Angeles

*Digitally altered image



±47,769
CARS PER DAY

SANTA MONICA BLVD

208-210 N. CANON DRIVE
BEVERLY HILLS, CA 90210

±43,389
CARS PER DAY

TRAFFIC COUNT: TRAFFIXMETRIX, COSTAR 2025

JAY LUCHS
GAVIN KETCHUM
CARLY GELLER
NEWMARK
PACIFIC

Executive Vice Chairman
Director
Director
JAYLUCHS.COM

310-407-6585
310-407-6593
310-593-0760

jay.luchs@nrmk.com
gavin.ketchum@nrmk.com
carly.geller@nrmk.com

CA RE Lic. #01260345
CA RE Lic. #01929170
CA RE Lic. #02153582

jayluchs.com
For Lease
310 407 6585
Jay Luchs
Los Angeles

N. SANTA MONICA BLVD

The Wallis
Wallis Annenberg Center for the Performing Arts

S. SANTA MONICA BLVD

CASA BLANCA
Medical Building

Real Estate Office
Tramazing
Beverly Hills, CA

JADE BEVERLY HILLS
Eyebars
NAIL SUNNY
LASH & BEAUTY SALON

AZUR (coming soon)
Beverly Hills
Offices

PARKING STRUCTURE

Walleye
Keller Williams
The Courtyard
Refine Luxury Goods
Future Photography Studio
Future Yume Sushi Bar
AVEDON
Shoe
Future LOGAN HOLLOWELL
G/FORE

Garfield Pharmacy
JAMES PERSE

Offices
Future **MOTHER**

PIZZERIA STREET

Cavcas
Modern Esthetics
Med spa
Reserve
Society Hounds

ALFRED



Village on Canon
Previews Banker
Coldwell Banker

VIA ALLORO
RESTAURANT & BAR

No. 275
Nest Seekers
Future **Bad Remedy**
Discovery Land and Sound Ventures
NOVIKOV
BEVERLY HILLS

PARKING STRUCTURE



Terrace Restaurant

THE **MAYBOURNE**
BEVERLY HILLS

MARU COFFEE

BANK OF THE WEST
BNP PARIBAS

The Wallis
Wallis Annenberg Center for the Performing Arts

Real Estate Office
Frankie
Beverly Hills

BACIO di LATTE
Canon Collectables
Edelweiss Chocolates
Selfish
Brendratti

ANNESISTERON

Formerly **PortaVia**
BEVERLY HILLS



il Pastaio
RESTAURANT • BAR

BRIGHTON WY

alo

Attic Konzept
Altomare (coming soon)

Florie Couture
Versai

GIUSEPPE FRANCO SALON
Mishka
T Z U R I
BEVERLY HILLS, CA 90210
Nazareth's Fine Cigars

estilatorio
louka

FilmOn.tv/Salon 90210
Former **RITE AID**

DAYTON WY

ORAGI
RESTAURANT
Future Regent
MASTRO'S
STEAKHOUSE

MiniLuxe
LUXURIATOR
Barnes International Realty (offices)

Super Care Drugs
Lido Equities Group
future **MICHAEL M**
W Barber Shop
SUGARFISH
BY PASTI ALLEGRI

CLIFTON WY

Pacific Premier Bank
Fred Hayman Building

Seeger
PRIVE

Future
PortaVia
BEVERLY HILLS

New Pacific

WILSHIRE BLVD

The information contained herein has been obtained from sources deemed reliable but has not been verified and no guarantee, warranty or representation, either express or implied, is made with respect to such information. Terms of sale or lease and availability are subject to change or withdrawal without notice.

*Digitally altered photos, view original photos [here](#)

JAY LUCHS Executive Vice Chairman 310-407-6585
GAVIN KETCHUM Director 310-407-6593
CARLY GELLER Director 310-593-0760
NEWMARK **JAYLUCHS.COM**
PACIFIC

jay.luchs@nrmk.com
gavin.ketchum@nrmk.com
carly.geller@nrmk.com

CA RE Lic. #01260345
CA RE Lic. #01929170
CA RE Lic. #02153582

Corporate RE License #01796698

jayluchs.com
For Lease
310 407 6585
Jay Luchs
Los Angeles