



Overland & Ayres

2455 OVERLAND AVENUE
LOS ANGELES, CA 90064

JAY LUCHS
GENNY CHANG
CARLY GELLER

Vice Chairman 310-407-6585
Managing Director 310-407-6588
Director-Jay Luchs Group 310-593-0760

jay.luchs@nmrk.com
genny.chang@nmrk.com
carly.geller@nmrk.com

CA RE Lic. #01260345
CA RE Lic. #01467375
CA RE Lic. #02153582

JAYLUCHS.COM
NEWMARK



ADDRESS

2455 Overland Avenue
Los Angeles, CA 90064

USE

Retail/Fitness/Office

SIZE

Approximately 5,285 SF
Sub-dividable up to 3 spaces

RENT

Available upon Request

PROJECT OVERVIEW

Overland & Ayres is an exquisite, new mixed-use project, featuring 201 residential units and approximately 5,285 SF of retail/commercial space in West LA.

Adjacent to UCLA's new 700,000 SF multi-billion dollar Research Park and 235,000 SF of Creative Office space.

CEILING HEIGHTS

15'-5"

PARKING

Designated parking available in attached structure

JAY LUCHS
GENNY CHANG
CARLY GELLER

Vice Chairman 310-407-6585
Managing Director 310-407-6588
Director-Jay Luchs Group 310-593-0760

jay.luchs@nmrk.com
genny.chang@nmrk.com
carly.geller@nmrk.com

CA RE Lic. #01260345
CA RE Lic. #01467375
CA RE Lic. #02153582

JAYLUCHS.COM
NEWMARK



Overland & Ayres is a new community at the threshold of LA's bright future. Sophisticated apartment homes and three-story townhomes offering a premium amenity set — from podium pool to outdoor fitness lawn — and convenient access to LA's best neighborhoods.

RESIDENTIAL AMENITIES

Complemented by world-class amenities like the podium pool, fitness club, rooftop lounge, dog park and spa, plus dedicated co-working spaces. Overland & Ayres lays an effortless foundation for an active and inspired lifestyle.



JAY LUCHS
GENNY CHANG
CARLY GELLER

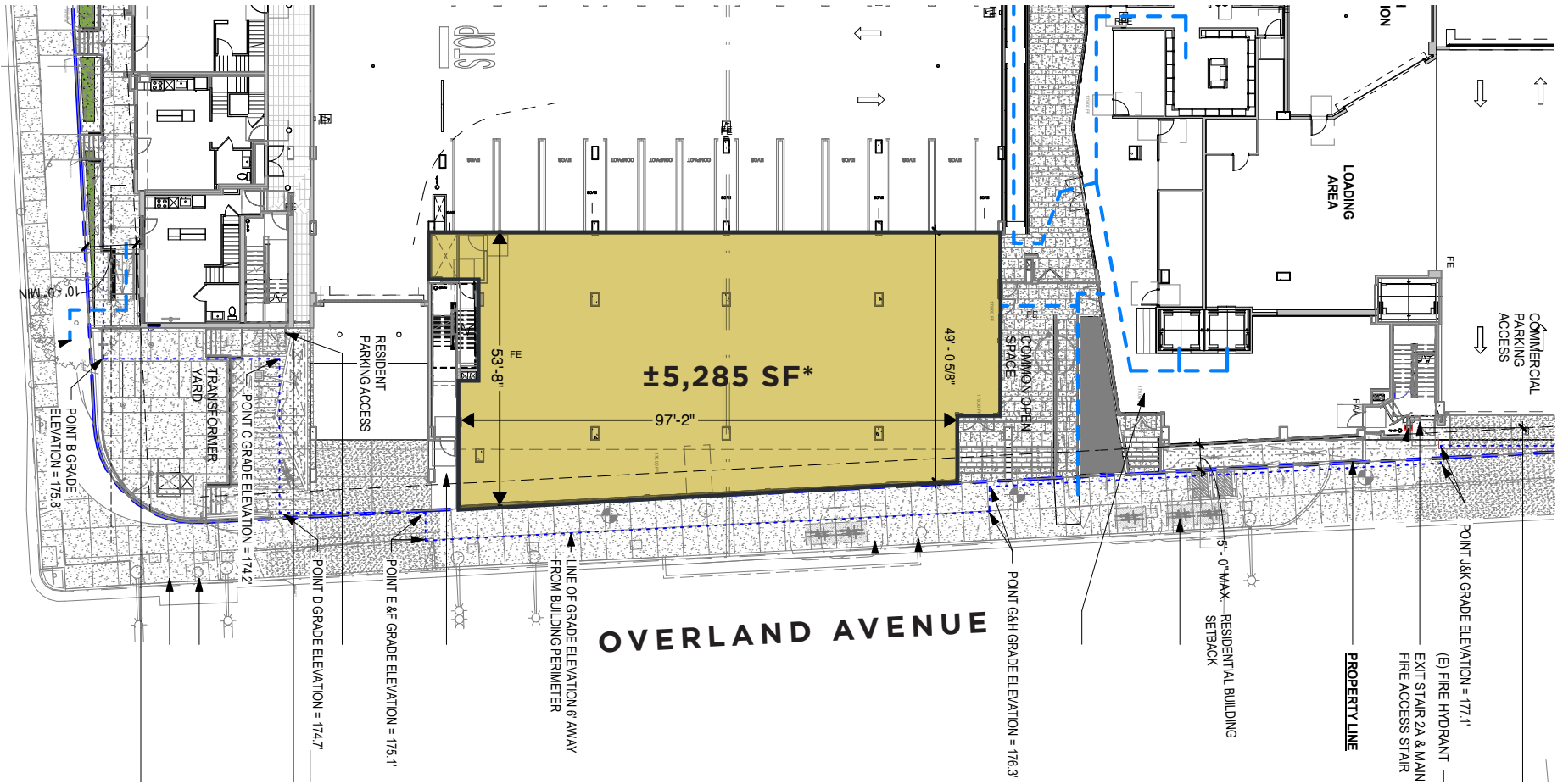
Vice Chairman 310-407-6585
 Managing Director 310-407-6588
 Director-Jay Luchs Group 310-593-0760

jay.luchs@nmrk.com
genny.chang@nmrk.com
carly.geller@nmrk.com

CA RE Lic. #01260345
 CA RE Lic. #01467375
 CA RE Lic. #02153582

JAYLUCHS.COM
NEWMARK

AYRES AVENUE



*SUB-DIVIDABLE UP TO 3 SPACES

JAY LUCHS
GENNY CHANG
CARLY GELLER

Vice Chairman 310-407-6585
 Managing Director 310-407-6588
 Director-Jay Luchs Group 310-593-0760

jay.luchs@nrmk.com
 genny.chang@nrmk.com
 carly.geller@nrmk.com

CA RE Lic. #01260345
 CA RE Lic. #01467375
 CA RE Lic. #02153582

JAYLUCHS.COM
NEWMARK



Traffic Count: TrafficMetrix Costar 2022

JAY LUCHS
GENNY CHANG
CARLY GELLER

Vice Chairman 310-407-6585
 Managing Director 310-407-6588
 Director-Jay Luchs Group 310-593-0760

jay.luchs@nrmk.com
 genny.chang@nrmk.com
 carly.geller@nrmk.com

CA RE Lic. #01260345
 CA RE Lic. #01467375
 CA RE Lic. #02153582

JAYLUCHS.COM
NEWMARK



WESTFIELD

Overland & Ayres

The information contained herein has been obtained from sources deemed reliable but has not been verified and no guarantee, warranty or representation, either express or implied, is made with respect to such information. Terms of sale or lease and availability are subject to change or withdrawal without notice.

Corporate RE Lic. #01355491

JAY LUCHS
GENNY CHANG
CARLY GELLER

Vice Chairman 310-407-6585
Managing Director 310-407-6588
Director-Jay Luchs Group 310-593-0760

jay.luchs@nmrk.com
genny.chang@nmrk.com
carly.geller@nmrk.com

CA RE Lic. #01260345
CA RE Lic. #01467375
CA RE Lic. #02153582

JAYLUCHS.COM
NEWMARK