



295 S. ROBERTSON BOULEVARD

BEVERLY HILLS, CALIFORNIA

Please note: this image has been digitally altered

JAY LUCHS
GENNY CHANG
NEWMARK

Vice Chairman
Managing Director
JAYLUCHS.COM

310-407-6585
310-407-6588

jay.luchs@nrmk.com
genny.chang@nrmk.com

CA RE Lic. #01260345
CA RE Lic. #01467375

jayluchs.com
For Lease
310 407 6585
Jay Luchs
Los Angeles

PROPERTY DETAILS

ADDRESS

295 S. Robertson Boulevard
Beverly Hills, CA 90211

USE

Restaurant/Retail

SIZE

±1,842 SF

RENT

\$6.50 PSF per month NNN

PARKING

1 tandem parking lane
(2 spaces total)

HIGHLIGHTS

- On the corner of Robertson Boulevard and Gregory Way
- Patio space available
- Large display windows
- Cashwrap/Coffee bar
- Signage opportunity



Please note: this image has been digitally altered

JAY LUCHS
GENNY CHANG
NEWMARK

Vice Chairman
Managing Director
JAYLUCHS.COM

310-407-6585
310-407-6588

jay.luchs@nrmk.com
genny.chang@nrmk.com

CA RE Lic. #01260345
CA RE Lic. #01467375

jayluchs.com
For Lease
310 407 6585
Jay Luchs
Los Angeles



JAY LUCHS
GENNY CHANG
NEWMARK

Vice Chairman
 Managing Director
JAYLUCHS.COM

310-407-6585
 310-407-6588

jay.luchs@nrmk.com
genny.chang@nrmk.com

CA RE Lic. #01260345
 CA RE Lic. #01467375

jayluchs.com
For Lease
310 407 6585
Jay Luchs
 Los Angeles



Writers Guild Theater

Four Seasons Hotel Beverly Hills

James Perse

The Henry Blue Bottle Coffee BoxUnion

Cedars-Sinai Medical Center

Pacific Design Center

The Ivy

KITSON

Asakuma Sushi

Alfred Coffee

Lazy Daisy

Summer Fish & Rice

Cassetta

Oliver Tolentino boutique

Aylar Beauty Salon

Yasu Beverly Hills

Tehran Restaurant & La Maison de Creme Bakery

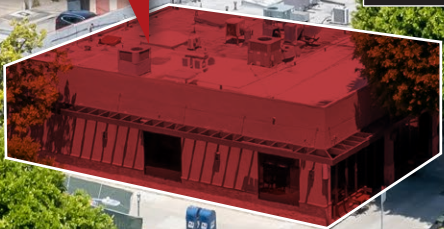
Thai Boom

Anny's

Specialty Hardware + Plumbing

295 S. ROBERTSON BOULEVARD

Juice Crafters



Beverly Hills Urgent Care

JAY LUCHS
GENNY CHANG
NEWMARK

Vice Chairman
Managing Director
JAYLUCHS.COM

310-407-6585
310-407-6588

jay.luchs@nrmk.com
genny.chang@nrmk.com

CA RE Lic. #01260345
CA RE Lic. #01467375

jayluchs.com
For Lease
310 407 6585
Jay Luchs
Los Angeles



The information contained herein has been obtained from sources deemed reliable but has not been verified and no guarantee, warranty or representation, either express or implied, is made with respect to such information. Terms of sale or lease and availability are subject to change or withdrawal without notice.

JAY LUCHS
GENNY CHANG
NEWMARK

Vice Chairman 310-407-6585
 Managing Director 310-407-6588
JAYLUCHS.COM

jay.luchs@nrmk.com
 genny.chang@nrmk.com

CA RE Lic. #01260345
 CA RE Lic. #01467375
 Corporate RE Lic. #01355491

jayluchs.com
For Lease
310 407 6585
Jay Luchs
 Los Angeles