

3002 MAIN STREET

SANTA MONICA, CA 90405



NEWMARK
PACIFIC

INDU
STRY

JAY LUCHS

Vice Chairman
T 310-407-6585
jay.luchs@nmrk.com
CA RE Lic. #01260345
JAYLUCHS.COM

CARLY GELLER

Director - Jay Luchs Group
T 310-593-0760
carly.geller@nmrk.com
CA RE Lic. #02153582

JAMES NUGENT

Associate
T 310-407-6584
james.nugent@nmrk.com
CA RE Lic. #02218437

SCOTT RIGSBY

Partner
T 310-395-5151
sr@industrypartners.com
CA RE Lic. #01252835

jayluchs.com
For Lease
310 407 6585
Jay Luchs
Los Angeles

ADDRESS

3002 Main Street
Santa Monica, CA 90405

SIZE

±1,500 - 5,218 SF

RENT

\$5.95 PSF/month NNN

PARKING

2/1,000 SF

USE

Retail/Office

AVAILABLE

May 1, 2026

NNN

Approximately \$2.35 PSF/month

PARKING RATE

\$200 per parking space/month





HIGHLIGHTS

- » Architectural two-story, freestanding corner building with prominent street frontage and exceptional visibility
- » Floor-to-ceiling windows providing ample lighting throughout and expansive views of Main Street
- » Features multiple offices, conference room, screening room, restrooms, kitchenette, private patio and gated parking
- » Prime Main Street location—just two blocks from the beach and steps to retailers, dining, and amenities
- » Located in an exceptionally walkable area of Santa Monica, offering easy access for pedestrians.
- » Neighboring tenants include: Via Veneto, Aviator Ride Nation, Reformation, Free People, Gnarwhal Coffee Co, 2nd Street, Library Alehouse, Heavy Handed, Tsukiji Sushi Sen, Holy Guacamole and more
- » Corner location with highly visible facades and multiple signage opportunities

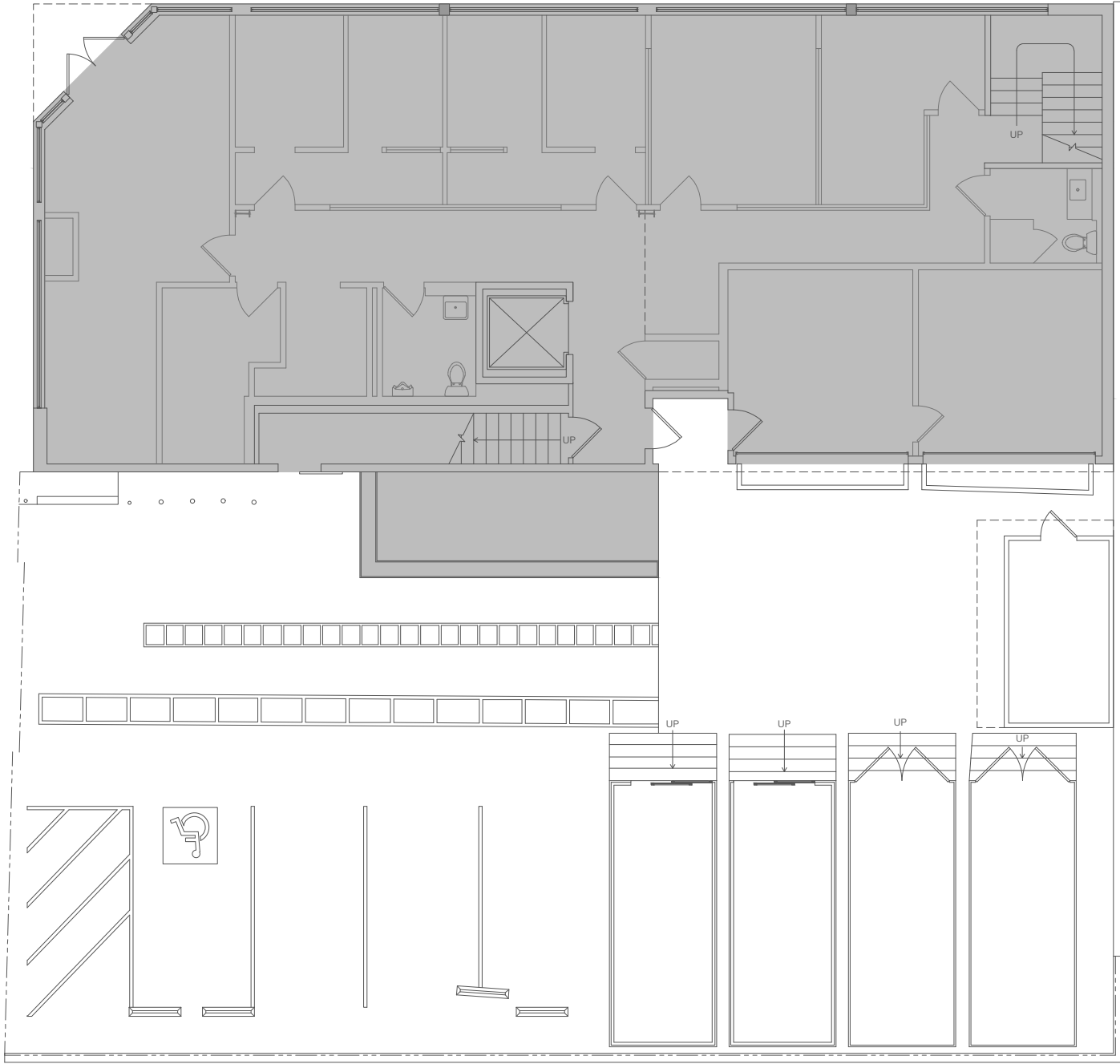
GROUND FLOOR + PATIO + PARKING PHOTOS



GROUND FLOOR PLAN

PIER AVENUE

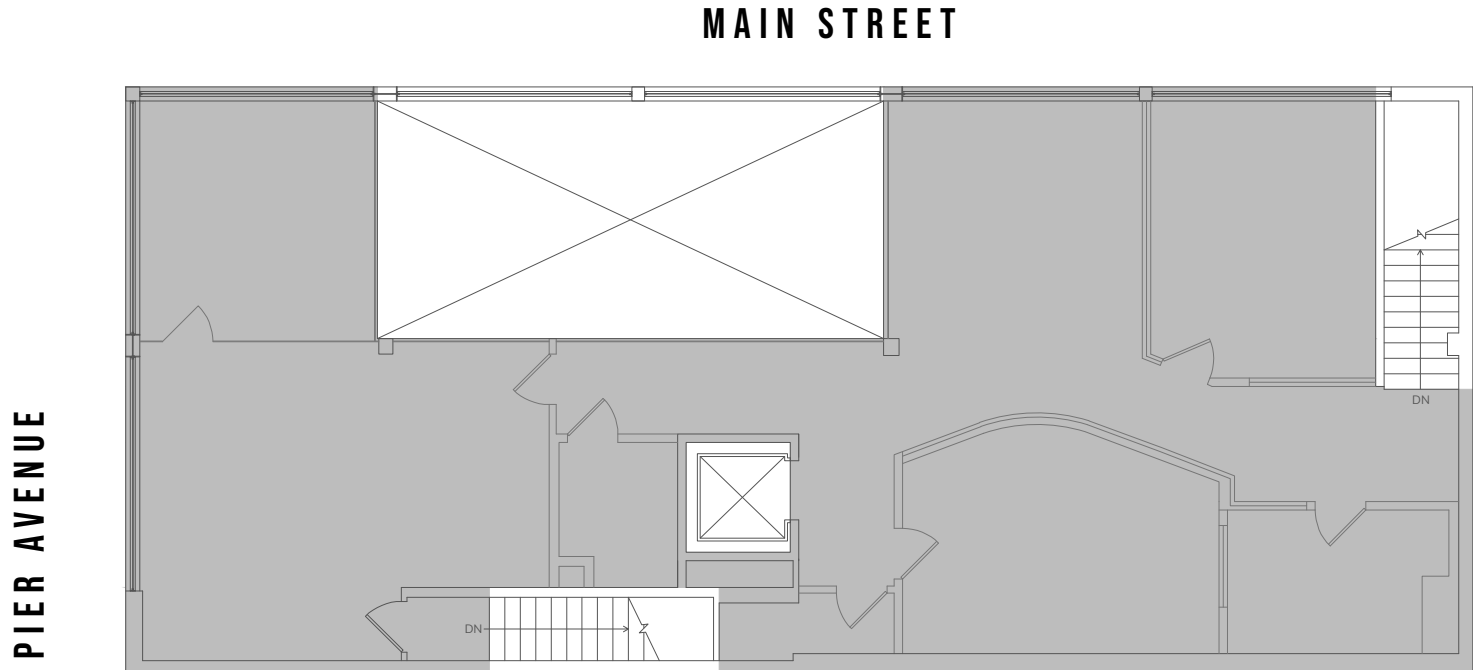
MAIN STREET



2ND FLOOR PHOTOS



2ND FLOOR PLAN



TOTAL POPULATION

28,704	177,213	434,324
1 Mile	3 Miles	5 Miles

TOTAL DAYTIME POPULATION

30,725	241,524	537,789
1 Mile	3 Miles	5 Miles

AVERAGE HOUSEHOLD INCOME

\$164,289	\$181,197	\$179,555
1 Mile	3 Miles	5 Miles

MEDIAN AGE

40.4	40.5	38
1 Mile	3 Miles	5 Miles



WALK SCORE

94



BIKE SCORE

99



SANTA
MONICA PIER

Shutters
ON THE BEACH

NEILSON WY

OCEAN AVE

OCEAN PARK BLVD

2ND ST

MAIN ST

3002 MAIN STREET
SANTA MONICA, CA 90405

ROSE AVE

PACIFIC AVE

VENICE BEACH

VENICE
BOARDWALK

ABBOT KINNEY BLVD

NEWMARK
PACIFIC

INDU
STRY



The information contained herein has been obtained from sources deemed reliable but has not been verified and no guarantee, warranty or representation, either express or implied, is made with respect to such information. Terms of sale or lease and availability are subject to change or withdrawal without notice.

Corporate RE License #01796698

NEWMARK
PACIFIC

INDU
STRY

JAY LUCHS

Vice Chairman
T 310-407-6585
jay.luchs@nmrk.com
CA RE Lic. #01260345
JAYLUCHS.COM

CARLY GELLER

Director - Jay Luchs Group
T 310-593-0760
carly.geller@nmrk.com
CA RE Lic. #02153582

JAMES NUGENT

Associate
T 310-407-6584
james.nugent@nmrk.com
CA RE Lic. #02218437

SCOTT RIGSBY

Partner
T 310-395-5151
sr@industrypartners.com
CA RE Lic. #01252835

jayluchs.com
For Lease
310 407 6585
Jay Luchs
Los Angeles