

3 0 5 0
S O U T H
L A C I E N E G A
B O U L E V A R D

R E T A I L | C A F E S P A C E A V A I L A B L E I N C U L V E R C I T Y

JAY LUCHS

Vice Chairman

310-407-6585

jay.luchs@nmrk.com

CA RE Lic. #01260345

JAYLUCHS.COM

CARLY GELLER

Director - Jay Luchs Group

310-593-0760

carly.geller@nmrk.com

CA RE Lic. #02153582

NEWMARK

3050
SOUTH
LA CIENEGA
BOULEVARD



ADDRESS

3050 S. La Cienega Boulevard
Culver City, CA 90232

SIZE

First Floor

Interior: ±1,317 RSF
Front Patio: ±752 RSF
Back Patio: ±601 RSF

Second Floor

Interior/Roof Deck: ±905 RSF

Total RSF: ±3,575 RSF

USE

Retail/Cafe

RENT

Available upon Request

AVAILABLE

Immediately

PARKING

Three spaces on-site. Additional off-site parking available

HIGHLIGHTS

- On the corner of La Cienega Blvd and Smiley Dr
- Private patio and indoor-outdoor deck with views of Culver City
- Features high-end materials, custom steel windows and doors
- 750 gallon grease interceptor installed
- Touch-less, smart Latch access system
- HVAC installed
- Seven minute walk to the Expo Line
- Easy access to the 10 Freeway
- Adjacent to Redcar properties 200,000 SF creative office campus in entitlement phase
- One block away from luxury residential, mixed-use development Cumulus with 1,200 apartment units, 100,000 SF of retail/restaurant, and 2,500 parking spaces
- Across from the Blackwelder 130,000 SF office campus

JAY LUCHS

Vice Chairman

310-407-6585

jay.luchs@nmrk.com

CA RE Lic. #01260345

JAYLUCHS.COM

CARLY GELLER

Director - Jay Luchs Group

310-593-0760

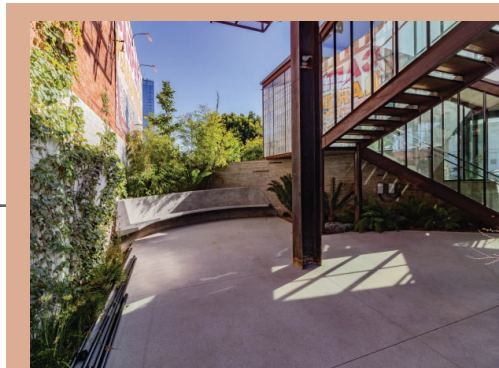
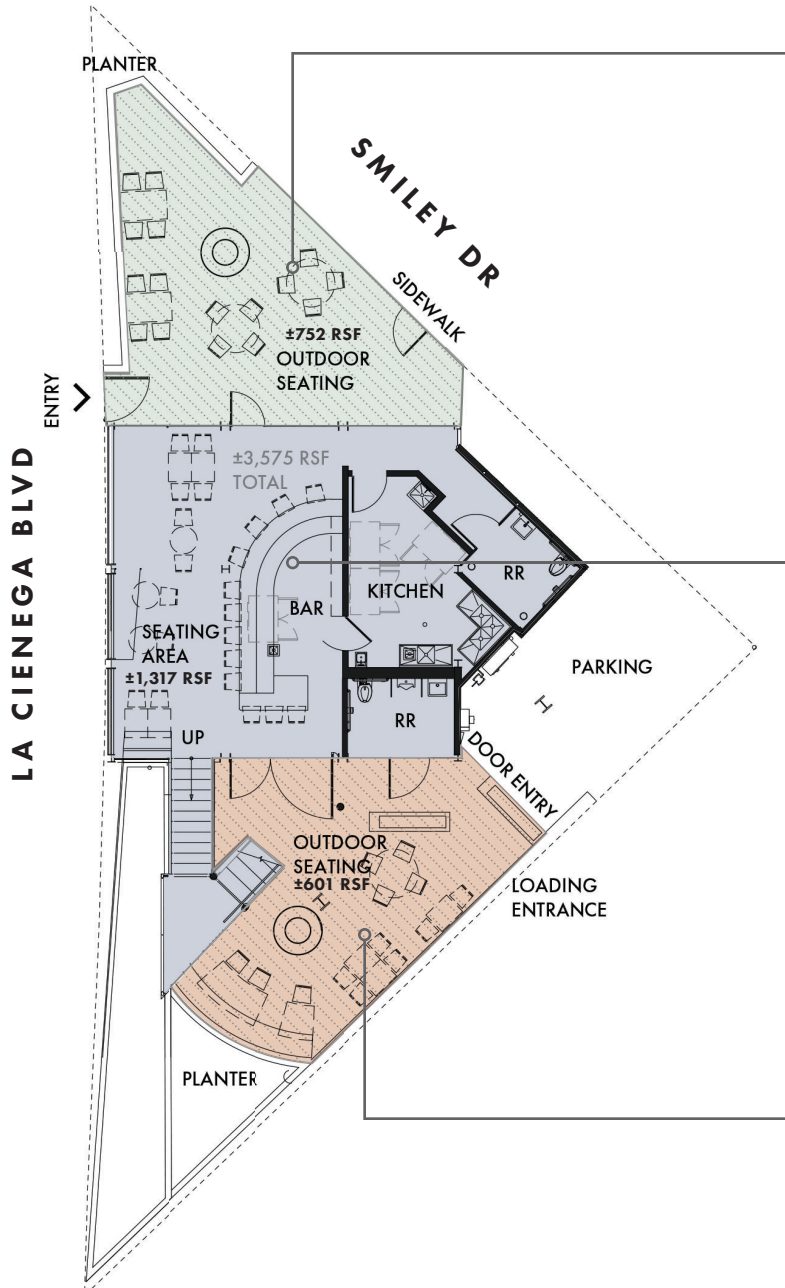
carly.geller@nmrk.com

CA RE Lic. #02153582

NEWMARK

3050
SOUTH
LA CIENEGA
BOULEVARD

FIRST FLOOR



JAY LUCHS
CARLY GELLER

Vice Chairman
Director - Jay Luchs Group

310-407-6585
310-593-0760

jay.luchs@nrmk.com
carly.geller@nrmk.com

CA RE Lic. #01260345
CA RE Lic. #02153582

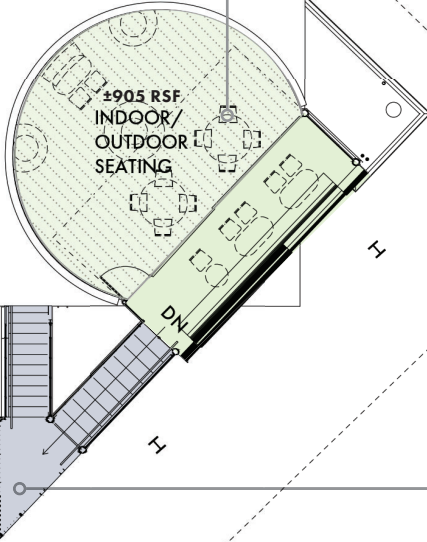
JAYLUCHS.COM
NEWMARK

3050
SOUTH
LA CIENEGA
BOULEVARD

SECOND
FLOOR

LA CIENEGA BLVD

SMILEY DR



JAY LUCHS
CARLY GELLER

Vice Chairman
Director - Jay Luchs Group

310-407-6585
310-593-0760

jay.luchs@nrmk.com
carly.geller@nrmk.com

CA RE Lic. #01260345
CA RE Lic. #02153582

JAYLUCHS.COM
NEWMARK

3050
SOUTH
LA CIENEGA
BOULEVARD

FIRST FLOOR



SECOND FLOOR



JAY LUCHS
CARLY GELLER

Vice Chairman
Director - Jay Luchs Group

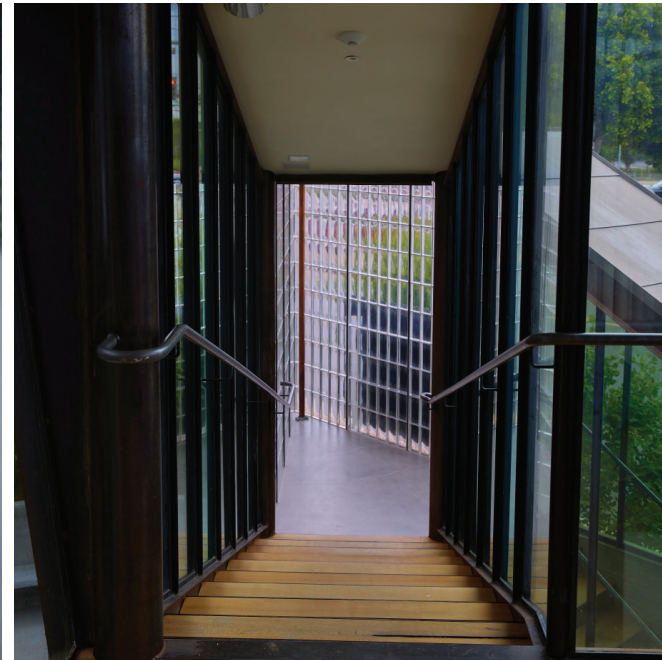
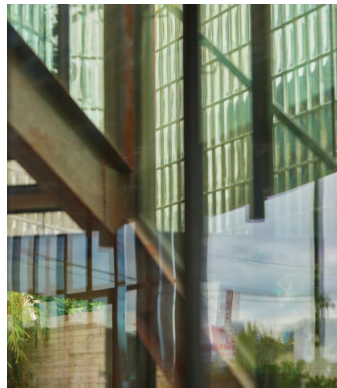
310-407-6585
310-593-0760

jay.luchs@nmrk.com
carly.geller@nmrk.com

CA RE Lic. #01260345
CA RE Lic. #02153582

JAYLUCHS.COM
NEWMARK

3050
SOUTH
LA CIENEGA
BOULEVARD



redcar PROPERTIES

The developer of 3050 S. La Cienega Blvd prides itself on best-in-class architecture and design featuring natural materials such as wood, steel, and concrete, quality fixtures, and timeless finishes

JAY LUCHS

Vice Chairman

310-407-6585

jay.luchs@nrmk.com

CA RE Lic. #01260345

JAYLUCHS.COM

CARLY GELLER

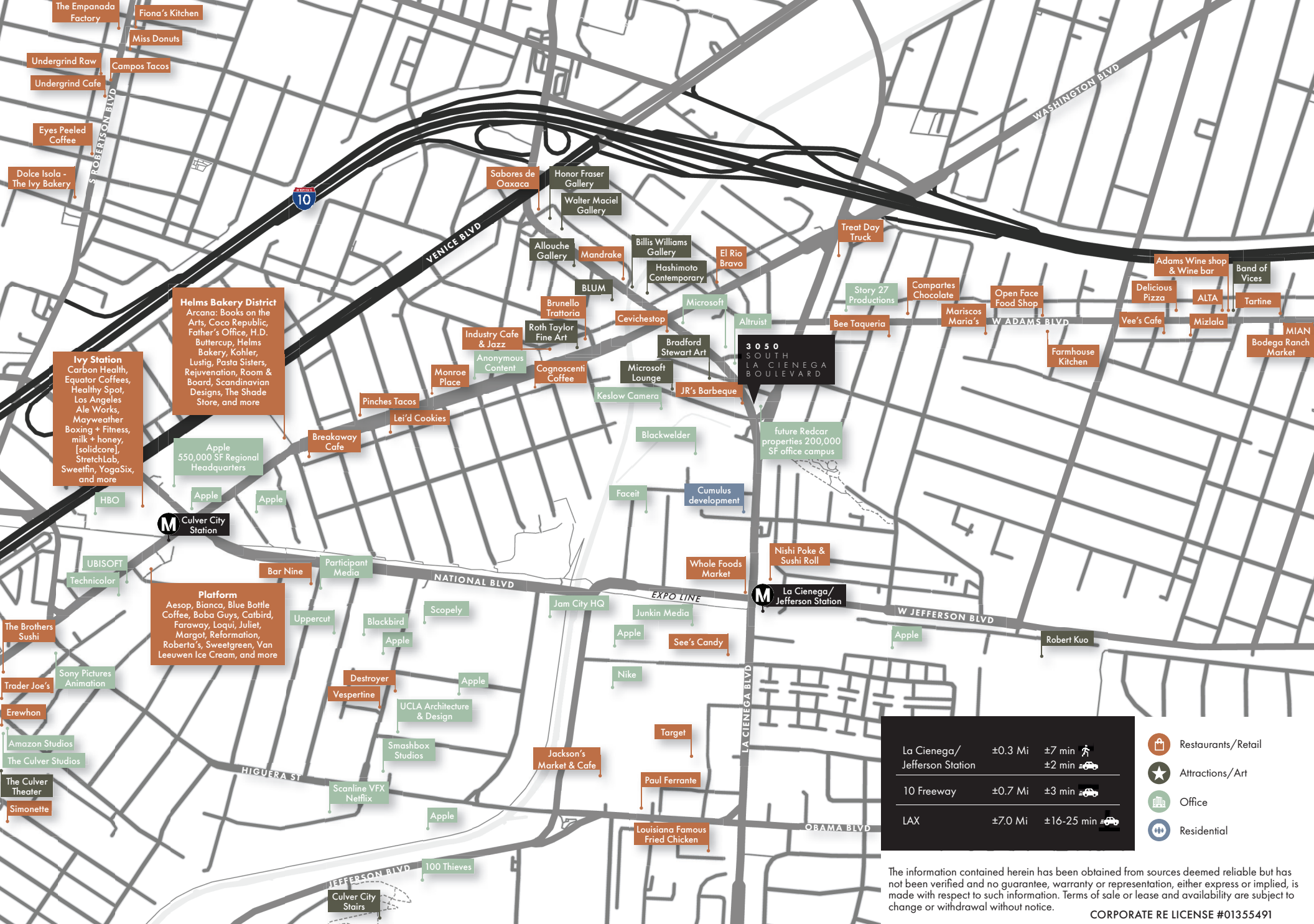
Director - Jay Luchs Group

310-593-0760

carly.geller@nrmk.com

CA RE Lic. #02153582

NEWMARK



JAY LUCHS
CARLY GELLER

Vice Chairman
Director - Jay Luchs Group

310-407-6585
310-593-0760

jay.luchs@nrmk.com
carly.geller@nrmk.com

CA RE Lic. #01260345
CA RE Lic. #02153582

JAYLUCHS.COM
NEWMARK