



NEW CONSTRUCTION • RETAIL / RESTAURANT / OFFICE FOR LEASE

315-319

N. BEVERLY
DRIVE

Carine Mamann

Executive Managing Director
lic. 01734150
carine.mamann@cushwake.com
T. 310 595 2235

Kazuko Morgan

Executive Vice Chairman
lic. 01070005
kazuko.morgan@cushwake.com
T. 310 595 2235

Jay Luchs

Vice Chairman
lic. 01260345
jay.luchs@nmrk.com
T. 310 407 6585

Carly Geller

Director
lic. 02153582
carly.geller@nmrk.com
T. 310 593 0760



NEWMARK

PROPERTY DETAILS



USE

Ground Retail, Office or
Restaurant Upper Levels



CEILING HEIGHT

14' - 15.5'



FRONTAGE

38' on Beverly Drive



NEW CONSTRUCTION

Delivery: Q1 2025



PARKING

Carousel Parking System
with 12 Spaces



HIGHLIGHTS

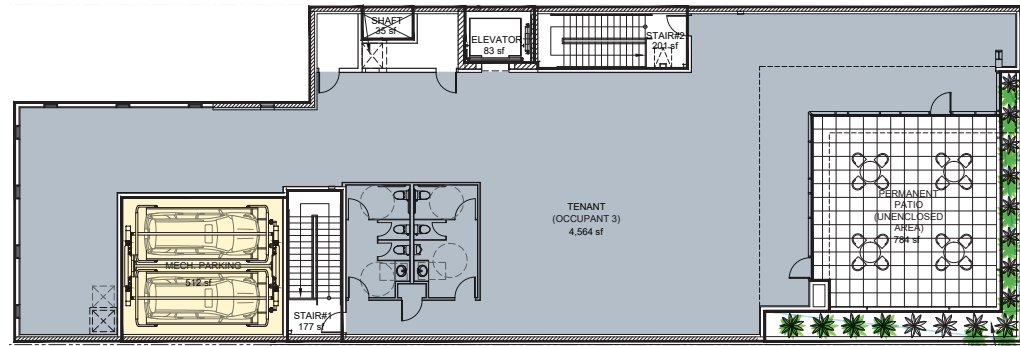
Positioned on North Beverly Drive within the luxurious Beverly Hills Golden Triangle, 317 N. Beverly Drive offers prime exposure to retailers and restaurants in a highly coveted and rarely available shopping destination.

This new construction offers a fresh face on the street that will be ideal for retail, restaurant or office.

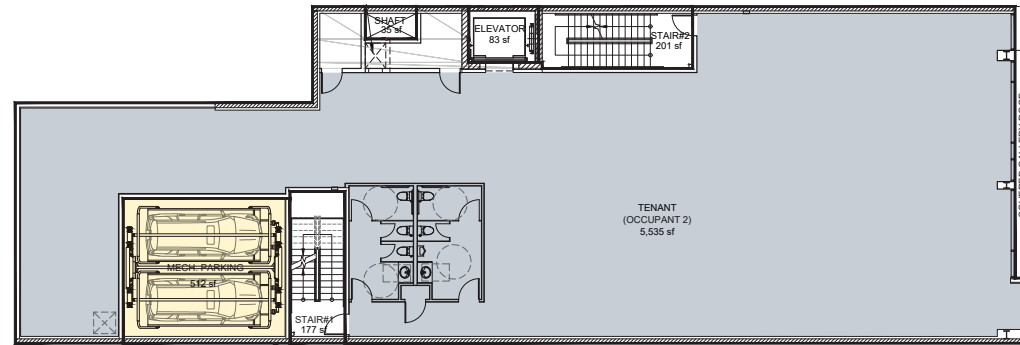
Neighboring tenants include: Aesop, Guess, Lululemon, IRO, Diptyque, Sandro, Pottery Barn, COS, Sam Edelman, ARI, Reformation, Sephora, Erewon and future Wilson.

Level 1	± 3,552 RSF
Level 2	± 5,535 RSF
Level 3	± 4,564 RSF
Roof Terrace	± 784 RSF
Total Square Feet	± 14,435 RSF

LEVEL 3

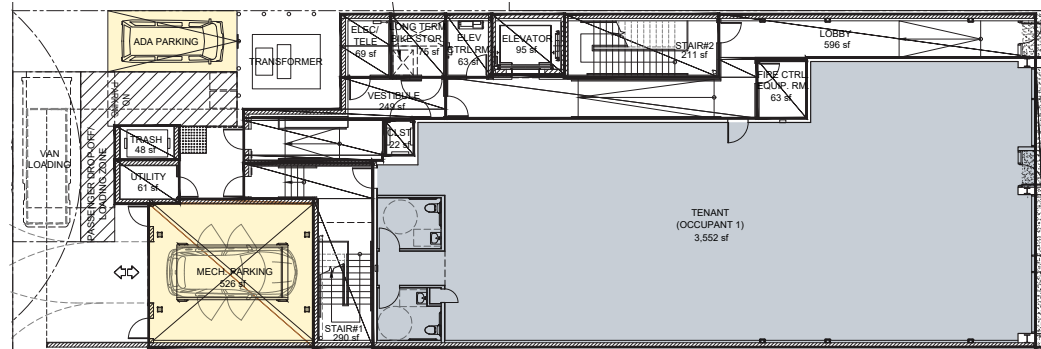


LEVEL 2



N. BEVERLY DRIVE

LEVEL 1



DEMOGRAPHICS



POPULATION

30,199	284,843	702,270
1 MILE	3 MILES	5 MILES



MEDIAN AGE

45.4	38.1	38.2
1 MILE	3 MILES	5 MILES



HOUSING UNITS

16,552	147,29	351,287
1 MILE	3 MILES	5 MILES



AVERAGE HOUSEHOLD INCOME

\$185,058	\$160,236	\$143,305
1 MILE	3 MILES	5 MILES



Little Santa Monica Boulevard

460 Bank of America

438 Crate&Barrel
Public Parking

428 Starbucks

422 ALLSAINTS

420 kitson

414 *alice + olivia*

410 *alice + olivia*

408 NESPRESSO

404 ba&sh

400 INFERMIX

Brighton Way

370 *& other stories*

364 *Chicavale Factory*

358 *sun-glasses-hut*

356 TASCHEM

354 A.L.C.

352 *maje*

350 CRISTOPHE

348 Favorite Daughter

346 THE LAST LINE

344 *San Blazone*

342 *ASRU*

340 MONNALISA

338 *lululemon*

334 *WU.com* FUTURE

332 *SEANOLA*

330 GUESS

320 PRONOVIAS

316 ANINE BING

314 DIPTYQUE

312 *sandro*

310 DJULA

308 *PRINCE*

300 *PRINCE*

N BEVERLY DRIVE

Dayton Way

270 SEPHORA

266 UNIQLO

264 Beverly Hills Perfumery

262 Arthur Murray

260 MODERN

258 *Auto*

256 THE LEADERSTERS

252 *LEADERSTERS*

242 *LEADERSTERS*

240 *LEADERSTERS*

210 MAYBOURNE

202 Office

Wilshire Boulevard

465 MR. BRAUNWASH
ART MUSEUM

449 *Papa's Burger*

447 *Just Eat*

445 puravida

439 Tom's Toys

437 *Favorite Daughter*

435 *Favorite Daughter*

433 VERONICA BEARD

427 *ALANICO Vinolo*

425 *RENEGAZINE*

419 Reformation

417 CLUB MONACO

401 CLUB MONACO

375 OPTOMETRIX

371 L'AGENCE

367 ZADIG & VOLTAIRE

365 SIMKHAI

363 *Public Center by +vogue*

357 GEARYS

351 Public Parking

345 EREWHON

339 *ARI*

329 *I RO*

327 *SECOND FLOOR*

325 *LUCKY*

323 *Aesop.*

321 **FOR LEASE**

315 CHOICE CONTEMPORARY

311 LADUREE

309 *CHOCOLATE*

301 *CHOCOLATE*

265 TAGS

259 sweetgreen

251 MGM Headquarters

245 OFFICE ENTRANCE

233 AVRA BEVERLY HILLS CALIFORNIA

229 AROMASO

225 Valley

225 CHASE

NEIGHBORING TENANTS



SIMKHAI, ZADIG & VOLTAIRE, L'AGENCE



SEPHORA



REFORMATION



EREWHON



ALICE & OLIVIA, NESPRESSO



LULULEMON



& OTHER STORIES

LOCATION



N. BEVERLY DRIVE

315-319

N. BEVERLY DRIVE



Carine Mamann

Executive Managing Director

lic. 01734150

carine.mamann@cushwake.com

T. 310 595 2235

Kazuko Morgan

Executive Vice Chairman

lic. 01070005

kazuko.morgan@cushwake.com

T. 310 595 2235

Jay Luchs

Vice Chairman

lic. 01260345

jay.luchs@nmrk.com

T. 310 407 6585

Carly Geller

Director

lic. 02153582

carly.geller@nmrk.com

T. 310 593 0760



NEWMARK