



**350 KING STREET**  
CHARLESTON, SC 29401

**GROUND FLOOR RETAIL/  
RESTAURANT SPACE FOR LEASE**





### SIZE

±3,800 SF



### USE

Second generation  
restaurant/retail space



### AVAILABLE

Immediately



### TERM

5 to 10 years



### PRICE

Available upon  
Request



### ESCALATIONS

3% annually



### TENANT IMPROVEMENTS

For Approved Tenants



### ZONING

General Business



**350 KING STREET**  
CHARLESTON, SC 29401



#### JOSH SCHAAP

843.670.5727

[Josh@charlestonconnection.net](mailto:Josh@charlestonconnection.net)

#### C. KENDRICK

843.475.1922

[Kendrick@charlestonconnection.net](mailto:Kendrick@charlestonconnection.net)

#### JACK CRENCIA

240.328.4380

[Jack@charlestonconnection.net](mailto:Jack@charlestonconnection.net)

**NEWMARK**

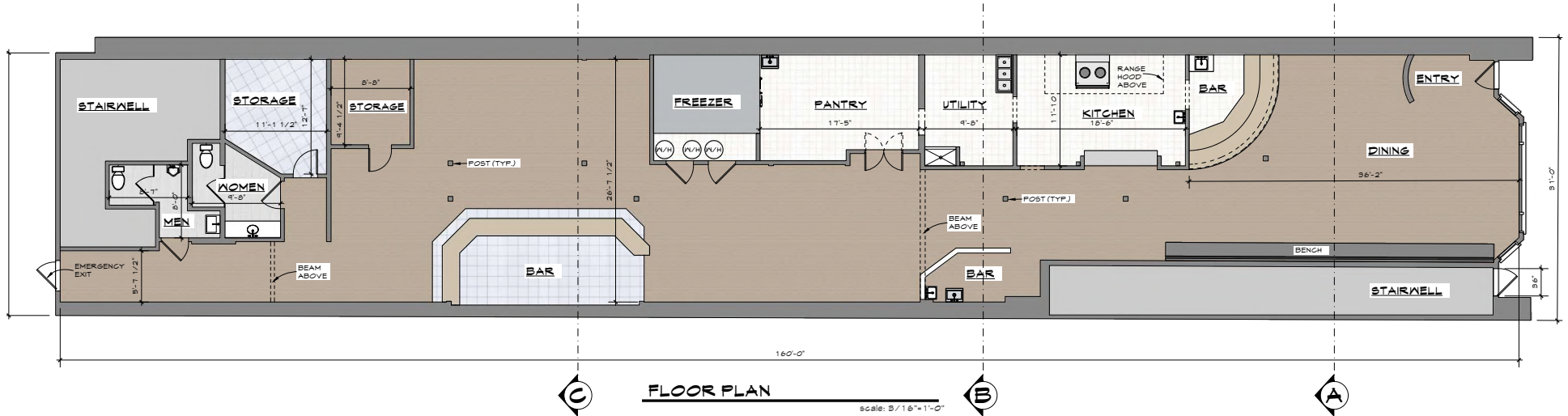
#### JAY LUCHS

310.407.6585

[jay.luchs@nmrk.com](mailto:jay.luchs@nmrk.com)

[jayluchs.com](http://jayluchs.com)

# FLOORPLAN



**350 KING STREET**  
CHARLESTON, SC 29401



**JOSH SCHAAP**  
843.670.5727  
Josh@charlestonconnection.net

**C. KENDRICK**  
843.475.1922  
Kendrick@charlestonconnection.net

**JACK CRENCIA**  
240.328.4380  
Jack@charlestonconnection.net

**NEWMARK**

**JAY LUCHS**  
310.407.6585  
jay.luchs@nmrk.com  
jayluchs.com



# PHOTOS



Interior Photo



Aerial View



Interior Photo



Aerial View

**350 KING STREET**  
CHARLESTON, SC 29401



**JOSH SCHAAP**

843.670.5727

[Josh@charlestonconnection.net](mailto:Josh@charlestonconnection.net)

**C. KENDRICK**

843.475.1922

[Kendrick@charlestonconnection.net](mailto:Kendrick@charlestonconnection.net)

**JACK CRENCIA**

240.328.4380

[Jack@charlestonconnection.net](mailto:Jack@charlestonconnection.net)

**NEWMARK**

**JAY LUCHS**

310.407.6585

[jay.luchs@nmrk.com](mailto:jay.luchs@nmrk.com)

[jayluchs.com](http://jayluchs.com)



AERIAL



**350 KING STREET**  
CHARLESTON, SC 29401



**JOSH SCHAAP**

843.670.5727

[Josh@charlestonconnection.net](mailto:Josh@charlestonconnection.net)

**C. KENDRICK**

843.475.1922

[Kendrick@charlestonconnection.net](mailto:Kendrick@charlestonconnection.net)

**JACK CRENCIA**

240.328.4380

[Jack@charlestonconnection.net](mailto:Jack@charlestonconnection.net)

**NEWMARK**

**JAY LUCHS**

310.407.6585

[jay.luchs@nmrk.com](mailto:jay.luchs@nmrk.com)

[jayluchs.com](http://jayluchs.com)



# NEARBY RETAILERS



**350 KING STREET**  
CHARLESTON, SC 29401



**JOSH SCHAAP**

843.670.5727

Josh@charlestonconnection.net

**C. KENDRICK**

843.475.1922

Kendrick@charlestonconnection.net

**JACK CRENCA**

240.328.4380

Jack@charlestonconnection.net

**NEWMARK**

**JAY LUCHS**

310.407.6585

jay.luchs@nmrk.com

jayluchs.com





**"The Best City in the U.S."**

*Travel and Leisure*

July 2019 (7<sup>th</sup> consecutive year)

**#1 Small City in the U.S.**

*Conde Nast Traveler*

October 2019 (9<sup>th</sup> consecutive year)

**#1 U.S. City for Economic Opportunity**

*Yelp*

February 2018

**"Top 10 Best Shopping Streets in the USA"**

*Attractions of America*

December 2017

Located in the epicenter of the **"The Best City in the U.S."** 350 King's central location is in walking distance of everything downtown, including shopping, restaurants, hotels, schools, attractions, parks and employers.

King Street is home to over 200 businesses along a 2 mile stretch. Additionally, the property is situated a few blocks from Marion Square, a beautiful 10 acre park that plays host to frequent events. Tens of thousands of visitors are regularly drawn by these events which include, Charleston Farmer's Market, Piccolo Spoleto Arts Festival, Charleston Wine & Food Festival, Charleston Fashion Week, Southeastern Wildlife Festival, Cooper River Bridge Run, and Second Sunday, among others.

**350 KING STREET**  
CHARLESTON, SC 29401



**JOSH SCHAAP**

843.670.5727

Josh@charlestonconnection.net

**C. KENDRICK**

843.475.1922

Kendrick@charlestonconnection.net

**JACK CRENCA**

240.328.4380

Jack@charlestonconnection.net

**NEWMARK**

**JAY LUCHS**

310.407.6585

jay.luchs@nmrk.com

[jayluchs.com](http://jayluchs.com)



# LOCATION MAP



The information contained herein has been obtained from sources deemed reliable but has not been verified and no guarantee, warranty or representation, either express or implied, is made with respect to such information. Terms of sale or lease and availability are subject to change or withdrawal without notice.

**350 KING STREET**  
CHARLESTON, SC 29401



**JOSH SCHAAP**  
843.670.5727

Josh@charlestonconnection.net

**C. KENDRICK**  
843.475.1922

Kendrick@charlestonconnection.net

**JACK CRENCIA**  
240.328.4380

Jack@charlestonconnection.net

- 1
- 2
- 3
- 4 Marion Square
- 5
- 6 Historic Charleston Market
- 7
- 8 Charleston Port
- 9
- 10 Battery Park
- 11 Arthur Ravenel Bridge

**NEWMARK**

**JAY LUCHS**  
310.407.6585  
jay.luchs@nmrk.com  
jayluchs.com