

351-355 N. CANON DRIVE
BEVERLY HILLS, CA 90210



FUTURE TENANT

**FUTURE
TENANT**

NEWMARK

JAY LUCHS

Vice Chairman
T 310-407-6585
jay.luchs@nrmk.com
CA RE Lic. #01260345
JAYLUCHS.COM

CARLY GELLER

Director - Jay Luchs Group
T 310-593-0760
carly.geller@nrmk.com
CA RE Lic. #02153582

BRANDON COHAN
REAL ESTATE // BCRE.LA

BRANDON COHAN

Founder
T 310-654-0200
brandon@bcre.la
CA RE Lic. #01903949
BCRE.LA

BRANDON ZARRABI

Vice President
T 310-492-3597
zarrabi@bcre.la
CA RE Lic. #02184350

351-355 N. CANON DRIVE



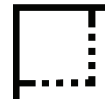
ADDRESS

351-355 N. Canon Drive
Beverly Hills, CA 90210



USE

Retail/Office/
Restaurant



SIZE

Ground: ±3,850 SF
(divisible)
2nd Floor: ±4,000 SF*
Total: ±7,850 SF

*Upstairs is only available for a full building tenant



RENT

Ground
\$10 PSF/month NNN
2nd Floor
\$5 PSF/month NNN



NNN

Approximately
\$2 PSF/month



PARKING

Ground: 6 spaces
2nd Floor: 7 spaces
Total: 13 spaces

NEWMARK

JAY LUCHS

Vice Chairman
T 310-407-6585
jay.luchs@nrmk.com
CA RE Lic. #01260345
JAYLUCHS.COM

CARLY GELLER

Director - Jay Luchs Group
T 310-593-0760
carly.geller@nrmk.com
CA RE Lic. #02153582

BRANDON COHAN
REAL ESTATE // BCRE.LA

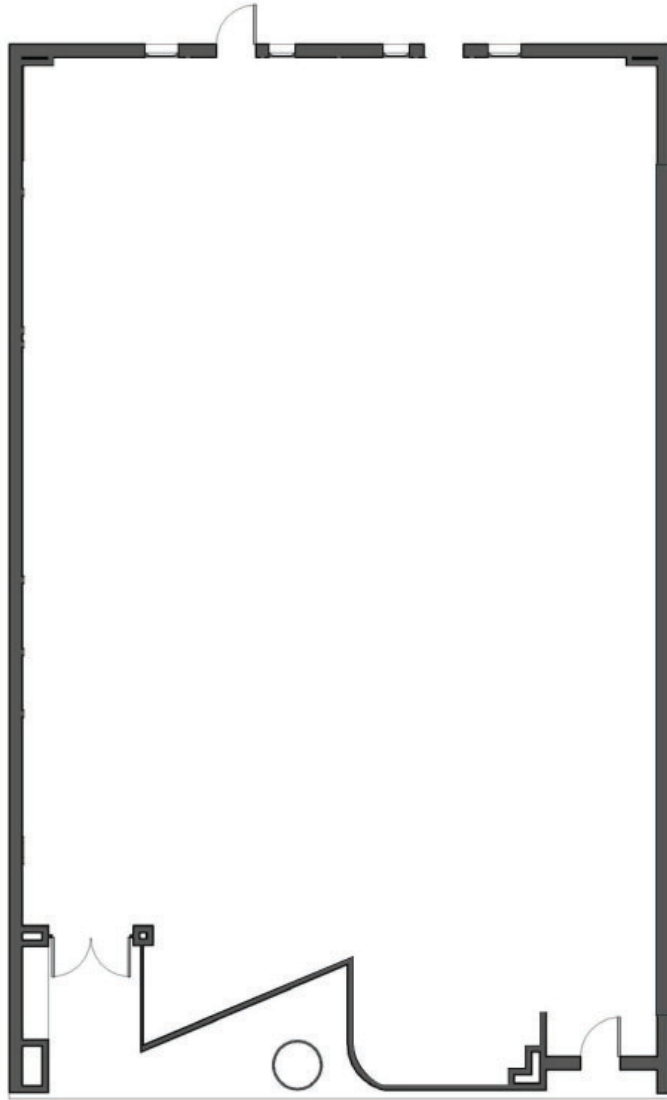
BRANDON COHAN

Founder
T 310-654-0200
brandon@bcre.la
CA RE Lic. #01903949
BCRE.LA

BRANDON ZARRABI

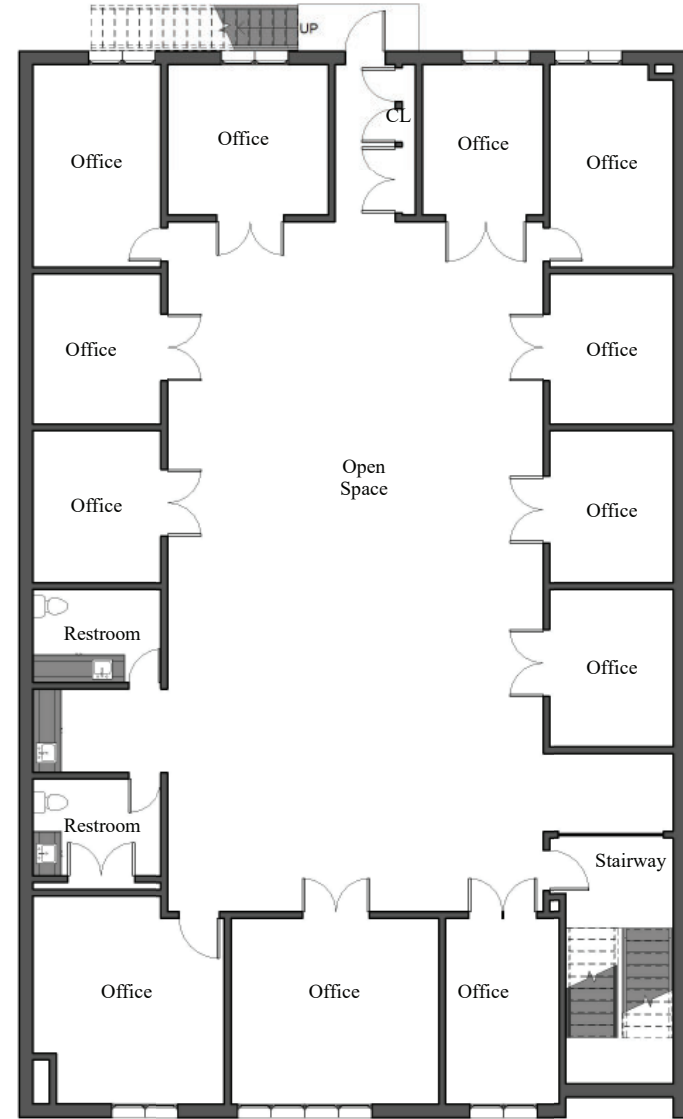
Vice President
T 310-492-3597
zarrabi@bcre.la
CA RE Lic. #02184350

351-355 N. CANON DRIVE



GROUND

±3,850 SF (divisible to 1,950 SF)



2ND FLOOR

±4,000 SF

NEWMARK

JAY LUCHS

Vice Chairman
T 310-407-6585
jay.luchs@nmrk.com
CA RE Lic. #01260345
JAYLUCHS.COM

CARLY GELLER

Director - Jay Luchs Group
T 310-593-0760
carly.geller@nmrk.com
CA RE Lic. #02153582

BRANDON COHAN
REAL ESTATE // BCRE.LA

BRANDON COHAN

Founder
T 310-654-0200
brandon@bcre.la
CA RE Lic. #01903949
BCRE.LA

BRANDON ZARRABI

Vice President
T 310-492-3597
zarrabi@bcre.la
CA RE Lic. #02184350

WE RESERVE THE RIGHT
TO REFUSE SERVICE
TO ANYONE











351-355 N. CANON DRIVE

NEARBY TENANTS



JAMES PERSE



MULBERRY PIZZERIA of Beverly Hills



e. baldi



YOSEMITE JAMES PERSE



alo



il Pastaio



LA SCALA BEVERLY HILLS



Louka beverly hills



Wally's



MASTRO'S STEAKHOUSE



Spago Beverly Hills



MAYBOURNE HOTEL GROUP

NEWMARK

JAY LUCHS
Vice Chairman
T 310-407-6585
jay.luchs@nrmr.com
CA RE Lic. #01260345
JAYLUCHS.COM

CARLY GELLER
Director - Jay Luchs Group
T 310-593-0760
carly.geller@nrmr.com
CA RE Lic. #02153582

BRANDON COHAN
REAL ESTATE // BCRE.LA

BRANDON COHAN
Founder
T 310-654-0200
brandon@bcre.la
CA RE Lic. #01903949
BCRE.LA

BRANDON ZARRABI
Vice President
T 310-492-3597
zarrabi@bcre.la
CA RE Lic. #02184350



351-355 N. CANON DRIVE

FUTURE TENANT

FUTURE TENANT

The information contained herein has been obtained from sources deemed reliable but has not been verified and no guarantee, warranty or representation, either express or implied, is made with respect to such information. Terms of sale or lease and availability are subject to change or withdrawal without notice.

Corporate RE Lic. #01355491

N. SANTA MONICA BOULEVARD
Medical Building
CASA BLANCA

S. SANTA MONICA BOULEVARD
HERITAGE
NAIL SUNNY
Eyebars
NAIL BEAUTY SALON
TATEL
Offices
For Lease

PARKING STRUCTURE
Wally's
For Lease
Keller Williams
The Courtyard
Refine Luxury Goods
For Lease
Negroni
AVEDON
Shole
Vacant - Jay Luchs for Lease
Rodeo Realty
YOSEMITE
JAMES PERSE

BRIGHTON WAY
Garfield Pharmacy
351-355 N. CANON DRIVE
e. baldi
JAMES PERSE

PIZZERIA
STREET
R/Wall Paint Lounge
future Modern Esthetics
Med spa
future Bow
JACKMOND
LE MERVETTY
260 Sample Sale LA
Village on Canon

VIA ALLORO

DAYTON WAY
No. 275
Nest Seekers
Formerly The Palm - For Lease
Hilton & Hyland
Julien's Auctions
The Cafe at Tommy's Beverly Hills
For Lease
Sweet
Georgie

MAYBOURNE
HOTEL GROUP

BANK OF THE WEST
BNP PARIBAS

WILSHIRE BOULEVARD

N. SANTA MONICA BOULEVARD
TheWallis
Wallis Ansonberg Center for the Performing Arts

S. SANTA MONICA BOULEVARD
Real Estate Office
Funke
il Tramezzino
drybar
JENNIFER FISHER
Edelweiss Chocolates
Selfish
ANNESISTERON
LEONARD
DAN DEUTSCH
OPTICAL OUTLOOK
Umberto Salon
VAPOR
WADATSUMI

BRIGHTON WAY
alo
alo Coats
Vacant
Vacant
Florie Couture
Versai
GIUSEPPE FRANCO SALON
Mishka
TIZURI
Nazareth's Fine Cigars
ESTIATORIO
Lourka
Filmon.tv/Salon 90210
RITE
AID
corepower YOGA

DAYTON WAY
Obagi
Core Real Estate Group
For Lease
Sands & Associates
MiniLuxe
LUXURIATOR
Barnes International Realty (offices)
St John - For Lease
Super Care Drugs
For Lease (Office)
For Lease
CANALÉ
SUGARFISH
BY SUSHI INZANA
Westside Estate Agency
Rodeo Realty

CLIFTON WAY
Pacific Premier Bank
Fred Hayman Building
Spago
Prive
Nusr-EL
Coldwell Banker
New Pacific

WILSHIRE BOULEVARD

NEWMARK

JAY LUCHS

Vice Chairman
T 310-407-6585
jay.luchs@nmrk.com
CA RE Lic. #01260345
JAYLUCHS.COM

CARLY GELLER

Director - Jay Luchs Group
T 310-593-0760
carly.geller@nmrk.com
CA RE Lic. #02153582

BRANDON COHAN
REAL ESTATE // BCRE.LA

BRANDON COHAN

Founder
T 310-654-0200
brandon@bcre.la
CA RE Lic. #01903949
BCRE.LA

BRANDON ZARRABI

Vice President
T 310-492-3597
zarrabi@bcre.la
CA RE Lic. #02184350