

351-355 N. CANON DRIVE

BEVERLY HILLS, CA 90210



**FUTURE
TENANT**

FUTURE TENANT

NEWMARK

JAY LUCHS

Vice Chairman
T 310-407-6585
jay.luchs@nrmk.com
CA RE Lic. #01260345
JAYLUCHS.COM

CARLY GELLER

Director - Jay Luchs Group
T 310-593-0760
carly.geller@nrmk.com
CA RE Lic. #02153582

BRANDON COHAN
REAL ESTATE

BRANDON COHAN

Founder
T 310-654-0200
brandon@bcre.la
CA RE Lic. #01903949
BCRE.LA

BRANDON ZARRABI

Vice President
T 310-492-3597
zarrabi@bcre.la
CA RE Lic. #02184350

351-355 N. CANON DRIVE



ADDRESS

351-355 N. Canon Drive
Beverly Hills, CA 90210



USE

Retail/Office/
Restaurant



SIZE

Ground: ±3,850 SF
2nd Floor: ±4,000 SF*
Total: ±7,850 SF

*Upstairs is only available for a full building tenant



RENT

Ground
\$10 PSF/month NNN

2nd Floor
\$5 PSF/month NNN



NNN

Approximately
\$2 PSF/month



PARKING

Ground: 6 spaces
2nd Floor: 7 spaces
Total: 13 spaces

NEWMARK

JAY LUCHS

Vice Chairman
T 310-407-6585
jay.luchs@nrmk.com
CA RE Lic. #01260345
JAYLUCHS.COM

CARLY GELLER

Director - Jay Luchs Group
T 310-593-0760
carly.geller@nrmk.com
CA RE Lic. #02153582

BRANDON COHAN
REAL ESTATE

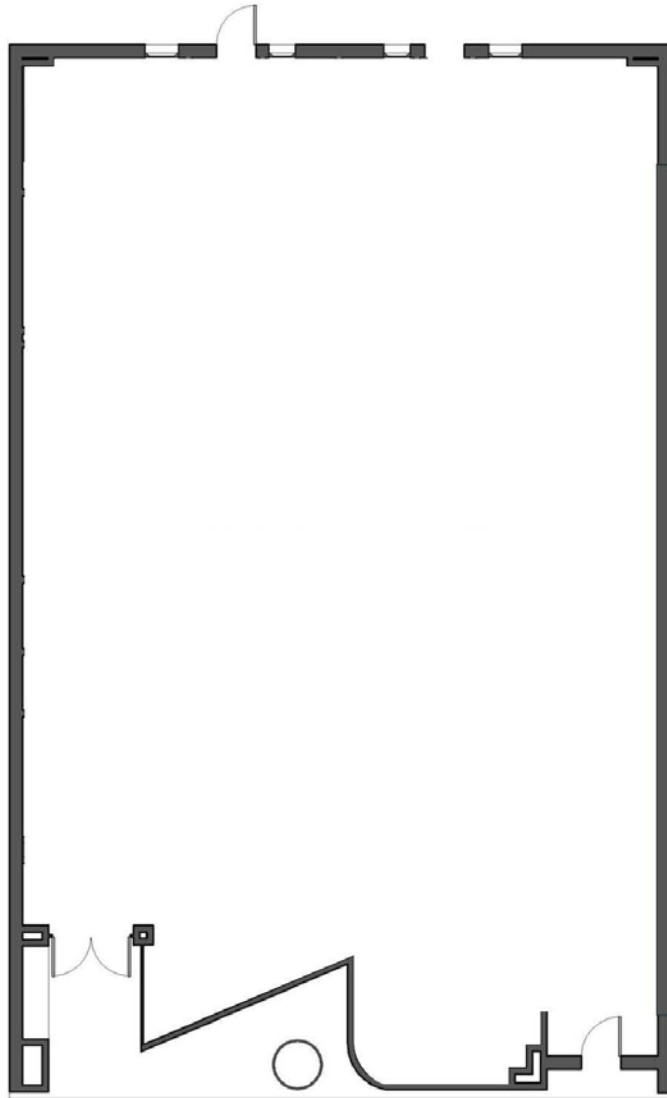
BRANDON COHAN

Founder
T 310-654-0200
brandon@bcre.la
CA RE Lic. #01903949
BCRE.LA

BRANDON ZARRABI

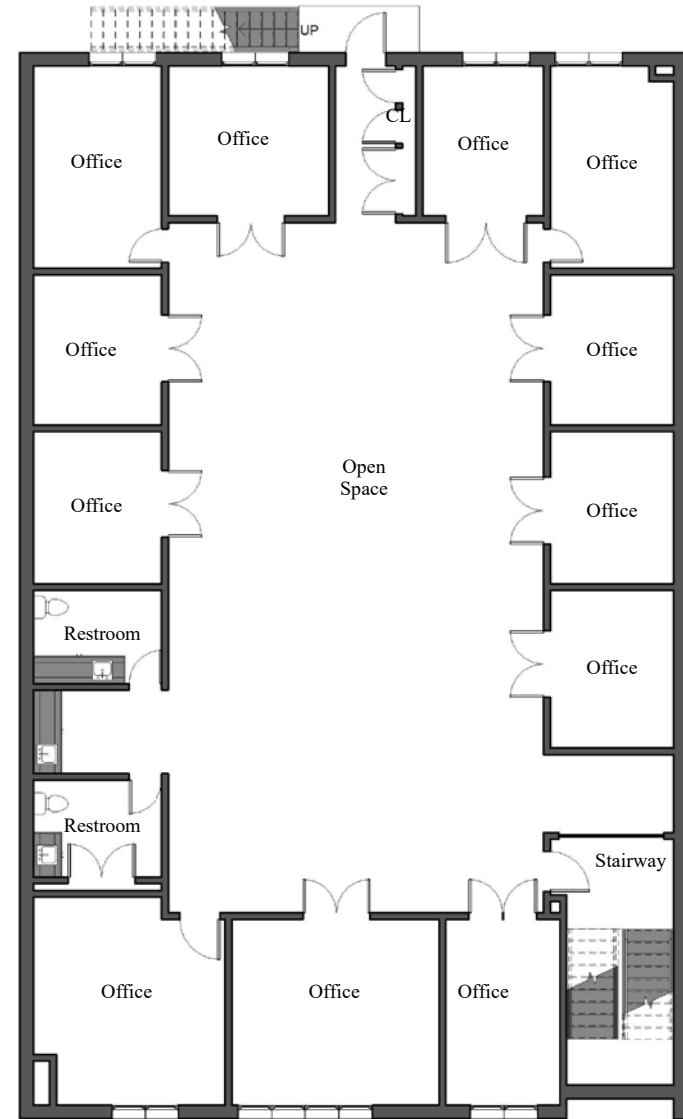
Vice President
T 310-492-3597
zarrabi@bcre.la
CA RE Lic. #02184350

351-355 N. CANON DRIVE



GROUND

±3,850 SF



2ND FLOOR

±4,000 SF

NEWMARK

JAY LUCHS

Vice Chairman
T 310-407-6585
jay.luchs@nrmk.com
CA RE Lic. #01260345
JAYLUCHS.COM

CARLY GELLER

Director - Jay Luchs Group
T 310-593-0760
carly.geller@nrmk.com
CA RE Lic. #02153582

BRANDON COHAN
REAL ESTATE

BRANDON COHAN

Founder
T 310-654-0200
brandon@bcre.la
CA RE Lic. #01903949
BCRE.LA

BRANDON ZARRABI

Vice President
T 310-492-3597
zarrabi@bcre.la
CA RE Lic. #02184350

351-355 N. CANON DRIVE

NEARBY TENANTS



JAMES PERSE



MULBERRY PIZZERIA
of Beverly Hills
STREET



e. baldi



Y/OSEMITTE
JAMES PERSE



alo



il Pastaio



LA SCALA
BEVERLY HILLS



Louka
beverly hills



Wally's



MASTRO'S STEAKHOUSE
M



Spago
Beverly Hills



MAYBOURNE
HOTEL GROUP

NEWMARK

JAY LUCHS
Vice Chairman
T 310-407-6585
jay.luchs@nrmr.com
CA RE Lic. #01260345
JAYLUCHS.COM

CARLY GELLER
Director - Jay Luchs Group
T 310-593-0760
carly.geller@nrmr.com
CA RE Lic. #02153582

BRANDON COHAN
REAL ESTATE

BRANDON COHAN
Founder
T 310-654-0200
brandon@bcre.la
CA RE Lic. #01903949
BCRE.LA

BRANDON ZARRABI
Vice President
T 310-492-3597
zarrabi@bcre.la
CA RE Lic. #02184350



351-355 N. CANON DRIVE

FUTURE TENANT

FUTURE TENANT

The information contained herein has been obtained from sources deemed reliable but has not been verified and no guarantee, warranty or representation, either express or implied, is made with respect to such information. Terms of sale or lease and availability are subject to change or withdrawal without notice.

Corporate RE Lic. #01796698

N. SANTA MONICA BOULEVARD
 Medical Building
 CASA BLANCA
 S. SANTA MONICA BOULEVARD

Eyebar
 NAIL SUNNY
TATEL
 Offices

PARKING STRUCTURE
Wallip's
 Keller Williams
 The Courtyard
 Refine Luxury Goods
 Negrini
AVEDON
 Shole
 Rodeo Realty
G/FORE

BRIGHTON WAY
 Garfield Pharmacy
351-355 N. CANON DRIVE
JAMES PERSE
e. baldi

PIZZERIA STREET
 R/Wall Paint Lounge
 future Modern Esthetics
 Med spa
 future Bow
JACKMOND
 LE MERVETTY
 260 Sample Sale LA
 Village on Canon

VIA ALLORO
DAYTON WAY
 No. 275
 Nest Seekers
 future **Bad ROMAN**
 Hilton & Hyland
NOVIKOV

PARKING STRUCTURE
Sweet
 Georgie
MAYBOURNE
 HOTEL GROUP
BANK OF THE WEST
 BNP PARIBAS

WILSHIRE BOULEVARD

N. SANTA MONICA BOULEVARD
TheWallis
 Wallis Annenberg Center for the Performing Arts
 S. SANTA MONICA BOULEVARD
 Real Estate Office
Junke
il TAVAZZINI
 future MACIO & LATTE
 JENNIFER FISHER
 Edelweiss Chocolates
 Selfish
 ANNESISTERON
 La Scala
 DAN DEUTSCH
 OPTICAL OUTLOOK
 Umberto Salon
il Pastaio
 RESTAURANTE • BISTRO

BRIGHTON WAY
alo
 alo Coats
 XIAN
 Florie Couture
 Versai
GIUSEPPE FRANCO SALON
 Mishka
I ZURRI
 Nazareth's Fine Cigars
 ESTIATORIO
 Louka
 Filmon.tv/Salon 90210
RITE AID
corepower YOGA

DAYTON WAY
 Obagi
 Core Real Estate Group
MASTRO'S
 STEAKHOUSE
 Sands & Associates
MiniLuxe
 LUXURIATOR
 Barnes International Realty (offices)
 St John
 Super Care Drugs
CANALE
 Westside Estate Agency
 Rodeo Realty
SUGAR FISH
 BY GUY FIERI

CLIFTON WAY
 Pacific Premier Bank
 Fred Hayman Building
Spago
 Prive
NUSC-BI
 Coldwell Banker
 New Pacific

WILSHIRE BOULEVARD

NEWMARK

JAY LUCHS

Vice Chairman
 T 310-407-6585
 jay.luchs@nmrk.com
 CA RE Lic. #01260345
JAYLUCHS.COM

CARLY GELLER

Director - Jay Luchs Group
 T 310-593-0760
 carly.geller@nmrk.com
 CA RE Lic. #02153582

BRANDON COHAN
 REAL ESTATE

BRANDON COHAN
 Founder
 T 310-654-0200
 brandon@bcre.la
 CA RE Lic. #01903949
BCRE.LA

BRANDON ZARRABI
 Vice President
 T 310-492-3597
 zarrabi@bcre.la
 CA RE Lic. #02184350