



414 North  
Beverly Drive  
Beverly Hills, CA 90210

**JAY LUCHS**  
**CARLY GELLER**  
**NEWMARK**  
PACIFIC

Executive Vice Chairman  
Director  
**JAYLUCHS.COM**

310-407-6585  
310-593-0760

[jay.luchs@nrmk.com](mailto:jay.luchs@nrmk.com)  
[carly.geller@nrmk.com](mailto:carly.geller@nrmk.com)

CA RE Lic. #01260345  
CA RE Lic. #02153582

jayluchs.com  
**For Lease**  
**310 407 6585**  
**Jay Luchs**  
Los Angeles

# 414 North Beverly Drive

## Address

414 N. Beverly Drive  
Beverly Hills, CA 90210

## Use

Retail

## Existing Building

Ground: ±5,500 SF

## Price

Available upon Request

## Available

Fall 2026

## Frontage

Approximately 48' on Beverly Drive



*Existing building*

*\*Digitally altered image; see disclaimer*

**JAY LUCHS**  
**CARLY GELLER**  
**NEWMARK**  
PACIFIC

Executive Vice Chairman  
Director  
**JAYLUCHS.COM**

310-407-6585  
310-593-0760

jay.luchs@nrmk.com  
carly.geller@nrmk.com

CA RE Lic. #01260345  
CA RE Lic. #02153582

jayluchs.com  
**For Lease**  
**310 407 6585**  
**Jay Luchs**  
Los Angeles



Prime Golden Triangle address with excellent visibility and constant pedestrian activity

---

Highly desirable co-tenancy surrounded by luxury retail, dining, and hospitality

---

Outstanding area demographics and strong daytime population from nearby offices and hotels

---

Near multiple Beverly Hills municipal parking structures for convenient customer access

---

Ideal for luxury and contemporary retail, gallery, or experiential concepts

---

Prominent signage and branding opportunities along a marquee Beverly Hills block

---

Easy access to Wilshire Blvd and Santa Monica Blvd; steps from Rodeo Drive

**JAY LUCHS**  
**CARLY GELLER**  
**NEWMARK**  
PACIFIC

Executive Vice Chairman  
Director  
**JAYLUCHS.COM**

310-407-6585  
310-593-0760

[jay.luchs@nrmk.com](mailto:jay.luchs@nrmk.com)  
[carly.geller@nrmk.com](mailto:carly.geller@nrmk.com)

CA RE Lic. #01260345  
CA RE Lic. #02153582

jayluchs.com  
**For Lease**  
**310 407 6585**  
**Jay Luchs**  
Los Angeles

## Approved Redevelopment Plans

Ground: ±5,784 SF  
2nd Floor: ±4,448 SF  
3rd Floor: ±4,448 SF  
Roof: ±4,266 SF  
**TOTAL: ±18,946 SF**



*Existing building*

*Approved rendering for  
future development*

Positioned in Beverly Hills' coveted Golden Triangle, 414 N Beverly Drive offers a premier storefront presence along one of Los Angeles' highest-profile luxury retail corridors. The location benefits from strong year-round foot traffic, exceptional demographics, and proximity to globally recognized brands, fine dining, and five-star hotels.

The property may remain as-is today; alternatively, recently approved redevelopment plans offer a streamlined path for future enhancement or expansion.

**JAY LUCHS**  
**CARLY GELLER**  
**NEWMARK**  
PACIFIC

Executive Vice Chairman  
Director  
**JAYLUCHS.COM**

310-407-6585  
310-593-0760

jay.luchs@nrmk.com  
carly.geller@nrmk.com

CA RE Lic. #01260345  
CA RE Lic. #02153582

jayluchs.com  
**For Lease**  
**310 407 6585**  
**Jay Luchs**  
Los Angeles

# Renderings



## *Approved renderings for future development*

Please note, the Property can remain “as-is.” Plans for redevelopment were recently approved to expedite development process.



**JAY LUCHS**  
**CARLY GELLER**  
**NEWMARK**  
PACIFIC

Executive Vice Chairman  
Director  
**JAYLUCHS.COM**

310-407-6585  
310-593-0760

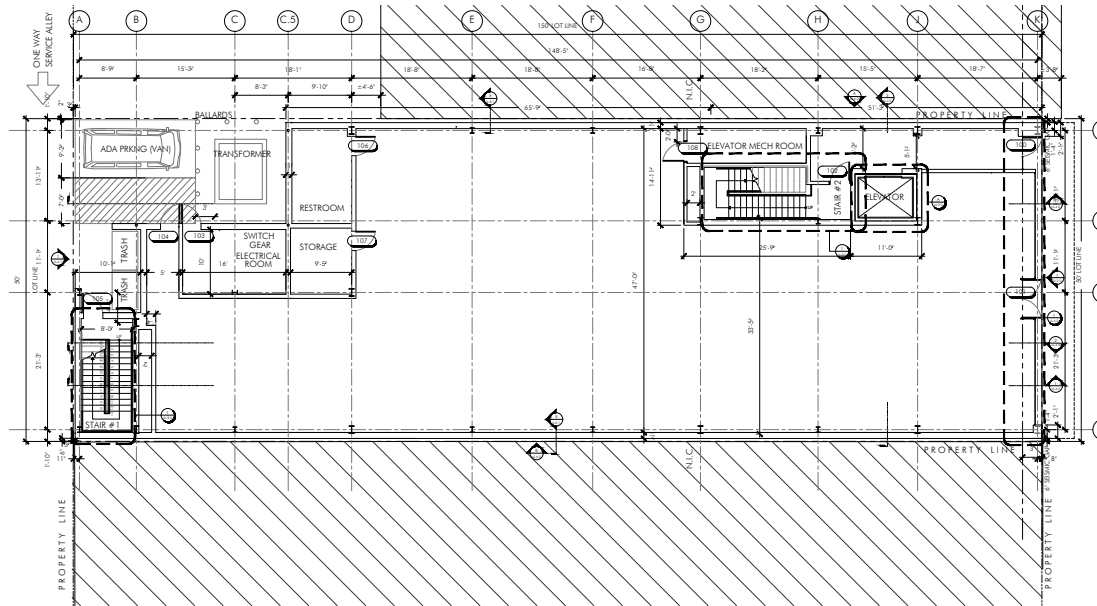
[jay.luchs@nrmk.com](mailto:jay.luchs@nrmk.com)  
[carly.geller@nrmk.com](mailto:carly.geller@nrmk.com)

CA RE Lic. #01260345  
CA RE Lic. #02153582

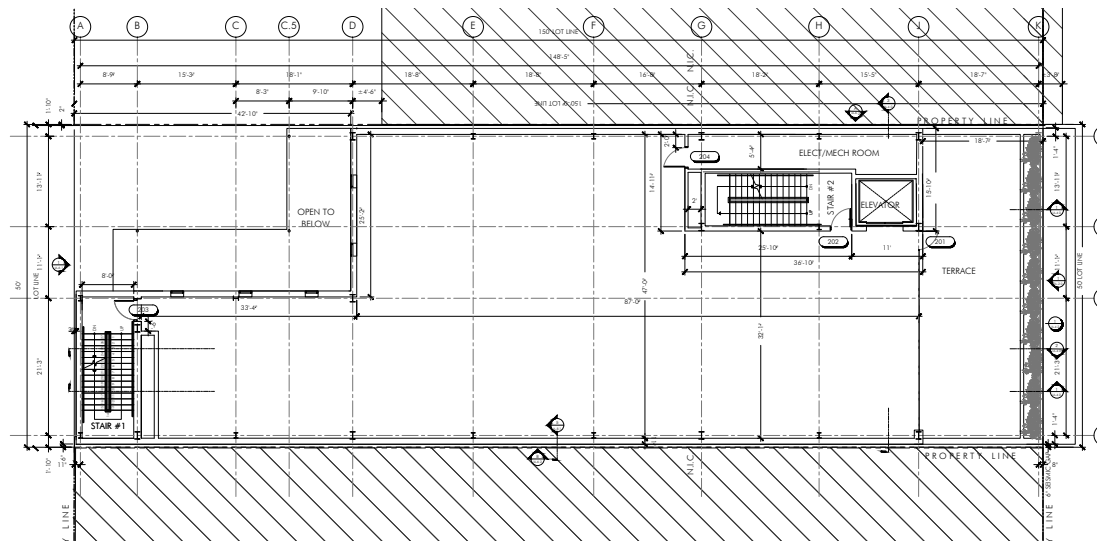
jayluchs.com  
**For Lease**  
**310 407 6585**  
**Jay Luchs**  
Los Angeles

# Approved Plans for Future Development Opportunity

## Proposed Ground Floor Plan



## Proposed 2nd Floor Plan



**JAY LUCHS**  
**CARLY GELLER**  
**NEWMARK**  
 PACIFIC

Executive Vice Chairman  
 Director  
**JAYLUCHS.COM**

310-407-6585  
 310-593-0760

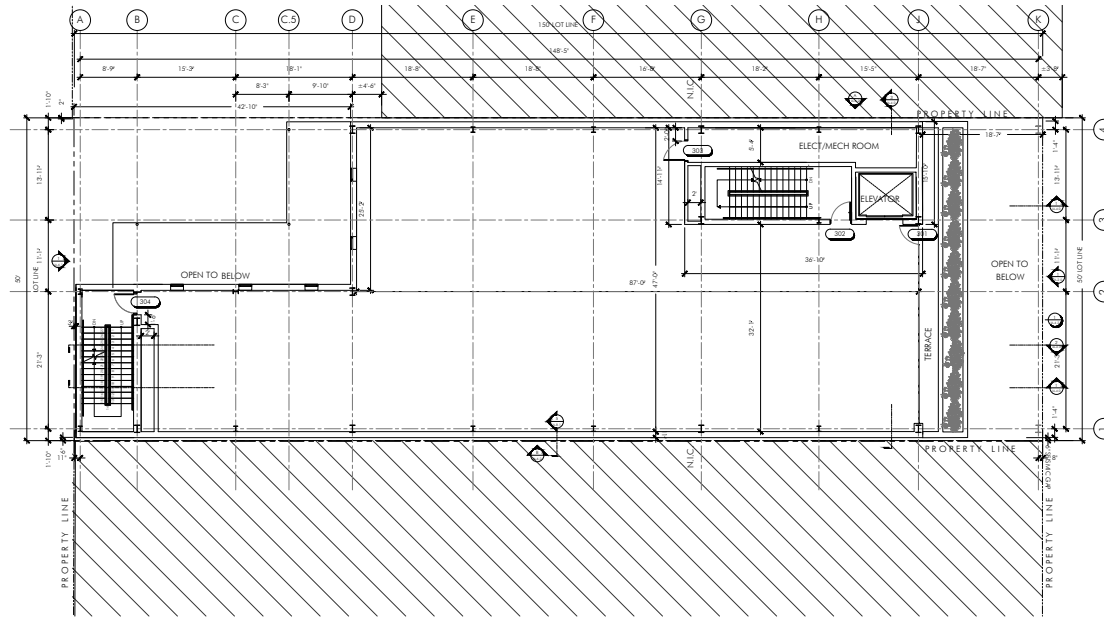
[jay.luchs@nrmk.com](mailto:jay.luchs@nrmk.com)  
[carly.geller@nrmk.com](mailto:carly.geller@nrmk.com)

CA RE Lic. #01260345  
 CA RE Lic. #02153582

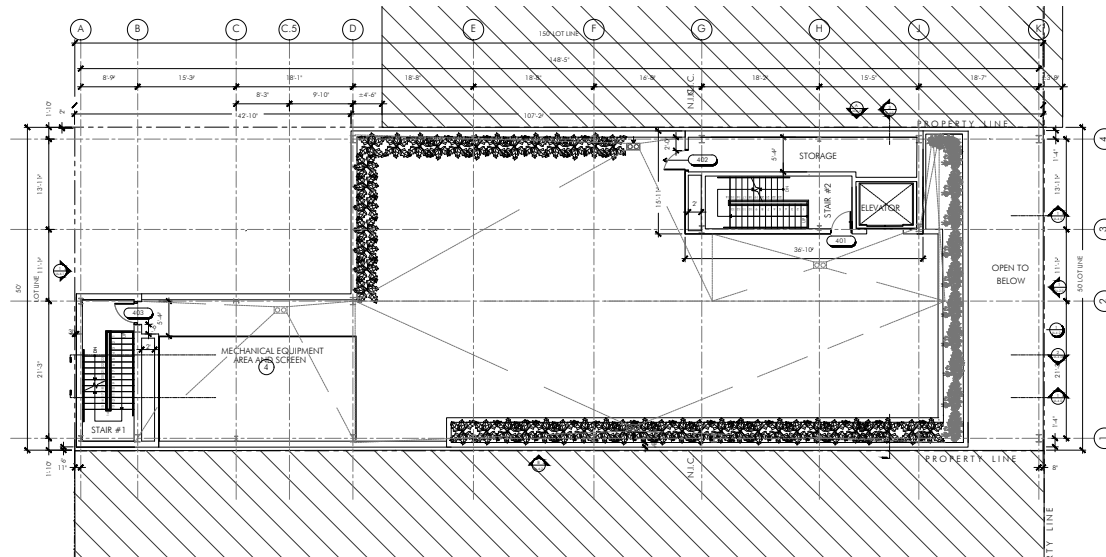
jayluchs.com  
**For Lease**  
**310 407 6585**  
**Jay Luchs**  
 Los Angeles

# Approved Plans for Future Development Opportunity

## Proposed 3rd Floor Plan



## Proposed Roof Floor Plan



**JAY LUCHS**  
**CARLY GELLER**  
**NEWMARK**  
 PACIFIC

Executive Vice Chairman  
 Director  
**JAYLUCHS.COM**

310-407-6585  
 310-593-0760

jay.luchs@nrmk.com  
 carly.geller@nrmk.com

CA RE Lic. #01260345  
 CA RE Lic. #02153582

For Lease  
 310 407 6585  
**Jay Luchs**  
 Los Angeles

# Neighboring Tenants

414 North  
Beverly Drive

Alicia's Olivia

NESPRESSO

ba&sh

H&M

CLUB MONACO

TASCHEN

● sunglasses hut

A.L.C.

Future  
sanctuary

maje

The  
Cheesecake  
Factory

MONDAY  
SWIMWEAR

lululemon 

JAY LUCHS  
CARLY GELLER  
**NEWMARK**  
PACIFIC

Executive Vice Chairman  
Director  
**JAYLUCHS.COM**

310-407-6585  
310-593-0760

jay.luchs@nrmk.com  
carly.geller@nrmk.com

CA RE Lic. #01260345  
CA RE Lic. #02153582

*\*Digitally altered image; see disclaimer*

jayluchs.com  
**For Lease**  
**310 407 6585**  
**Jay Luchs**  
Los Angeles

# Neighboring Tenants



414 North  
Beverly Drive

*\*Digitally altered image; see disclaimer*

JAY LUCHS  
CARLY GELLER  
**NEWMARK**  
PACIFIC

Executive Vice Chairman  
Director  
JAYLUCHS.COM

310-407-6585  
310-593-0760

jay.luchs@nrmk.com  
carly.geller@nrmk.com

CA RE Lic. #01260345  
CA RE Lic. #02153582

jayluchs.com  
**For Lease**  
**310 407 6585**  
**Jay Luchs**  
Los Angeles

LOUIS VUITTON Flagship Development



GUEST IN RESIDENCE  
Favorite Daughter  
VERONICA BEARD

PARKING STRUCTURE

**All'Antico Vinalo**  
BENE MANCINI  
Offices (upstairs)  
**Reformation**  
Future **CHANEL**

BRIGHTON WAY

**OPTOMETRIX**  
**L'AGENCE**

**ZADIG & VOLTAIRE**  
JONATHAN SIMKHAL  
JENNIFER FISHER

Future Geary's temp store  
**GEARYS**  
BEVERLY HILLS  
**EREWHON**

CITY OF BEVERLY HILLS PARKING STRUCTURE

BRILLIANT EARTH  
ARI  
**ME+EM**  
Gallery  
Aēsop.

Art Gallery  
Future **AMOUAGE**  
MORGENTHAU FREDERICS  
Future **Sant Ambrosius**

DAYTON WAY

Tags  
**sweetgreen**  
MGM  
**AVRA**  
ESTIATORIO  
Office Building  
AFOMAG60  
**Valley**  
**CHASE**

**JAY LUCHS**  
**CARLY GELLER**  
**NEWMARK**  
PACIFIC

Executive Vice Chairman  
Director  
**JAYLUCHS.COM**

310-407-6585  
310-593-0760

jay.luchs@nrmk.com  
carly.geller@nrmk.com

CA RE Lic. #01260345  
CA RE Lic. #02153582  
Corporate RE License #01796698

For Lease  
310 407 6585  
**Jay Luchs**  
Los Angeles



CITY OF BEVERLY HILLS PARKING STRUCTURE



414 North  
Beverly Drive



CLUB MONACO

BRIGHTON WAY



**N. BEVERLY DRIVE**

DAYTON WAY

**SEPHORA**



The information contained herein has been obtained from sources deemed reliable but has not been verified and no guarantee, warranty or representation, either express or implied, is made with respect to such information. Terms of sale or lease and availability are subject to change or withdrawal without notice.

\*Digitally altered image, view original [here](#)