

# 425 N. CANON DRIVE BEVERLY HILLS, CA 90210



**NEWMARK**  
JAYLUCHS.COM



**JAY LUCHS**  
Vice Chairman  
T 310-407-6585  
jay.luchs@nrmk.com  
CA RE License #01260345

**MATTHEW FAINCHEIN**  
Executive Managing Director  
T 310-430-2548  
matthew@lockehouse.com  
CA RE License #01503546



## ADDRESS

425 N. Canon Drive  
Beverly Hills, CA 90210

## USE

Retail

## SIZE

Ground Floor: ±6,000 SF  
2nd Floor: ±1,800 SF  
**Total: ±7,800 SF**

## RENT

Available upon Request

## HIGHLIGHTS

- Approximately 49' of frontage on N. Canon Drive
- Five parking spaces available in rear
- New roof and elevator

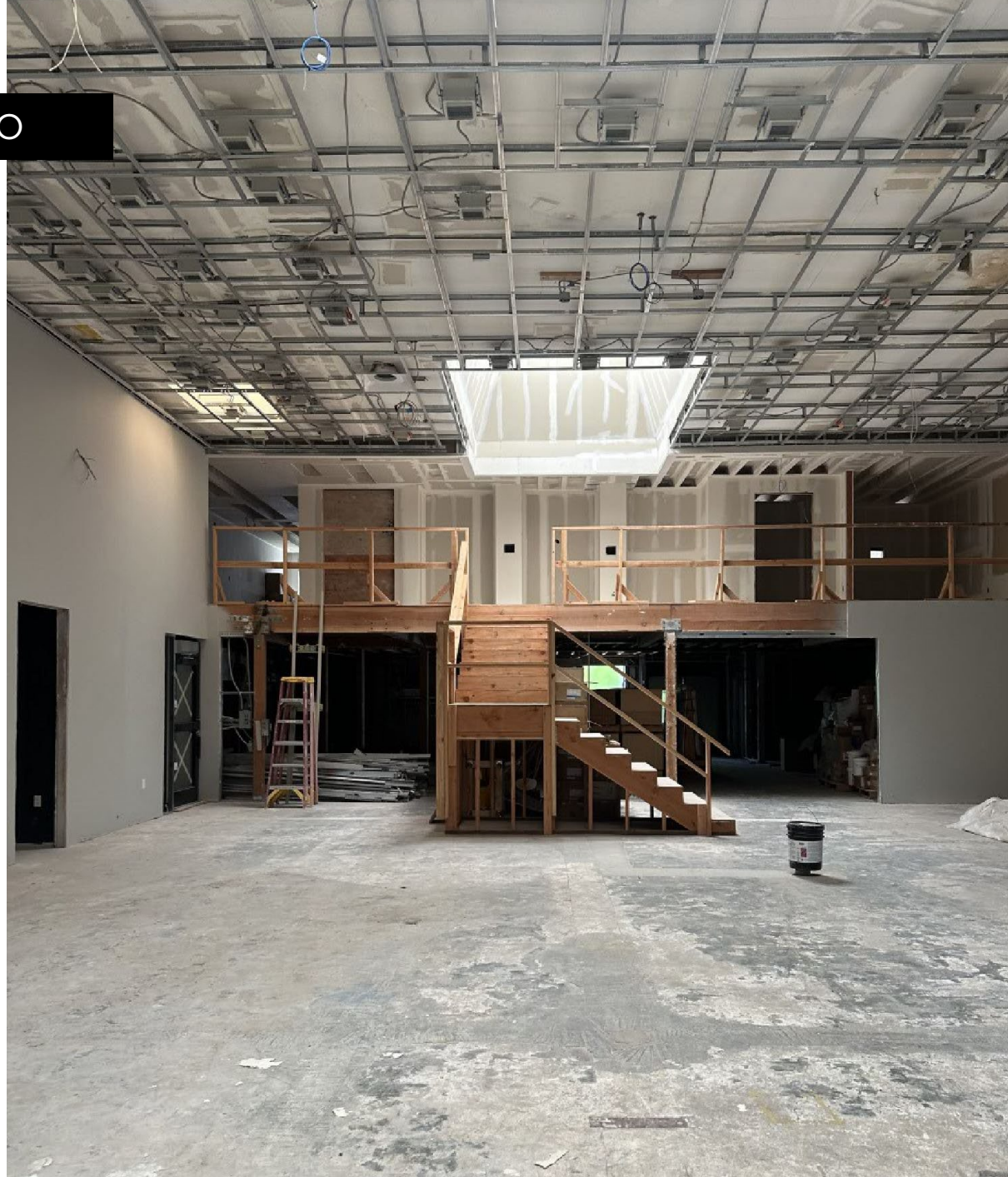
**NEWMARK**  
JAYLUCHS.COM



**JAY LUCHS**  
Vice Chairman  
T 310-407-6585  
jay.luchs@nrmk.com  
CA RE License #01260345

**MATTHEW FAINCHTEIN**  
Executive Managing Director  
T 310-430-2548  
matthew@lockehouse.com  
CA RE License #01503546

INTERIOR PHOTO



**NEWMARK**  
JAYLUCHS.COM



**JAY LUCHS**  
Vice Chairman  
T 310-407-6585  
jay.luchs@nrmk.com  
CA RE License #01260345

**MATTHEW FAINCHTEIN**  
Executive Managing Director  
T 310-430-2548  
matthew@lockehouse.com  
CA RE License #01503546

425 N. CANON DRIVE  
BEVERLY HILLS, CA 90210

N. CANON DR/  
SANTA MONICA BLVD  
±46,736  
CARS PER DAY

AVEDON  
BEVERLY HILLS MEN'S BOUTIQUE

NEGRONI

PERI.A

TATEL

Public  
Parking

Walley's

HERITAGE

TYME2100

drybar

JENNIFER FISHER

Edelweiss  
Chocolates

LA SCALA

Traffic Count: TrafficMetrix, Costar 2022

**NEWMARK**  
JAYLUCHS.COM

 **LOCKEHOUSE**

**JAY LUCHS**  
Vice Chairman  
T 310-407-6585  
jay.luchs@nmrk.com  
CA RE License #01260345

**MATTHEW FAINCHTEIN**  
Executive Managing Director  
T 310-430-2548  
matthew@lockehouse.com  
CA RE License #01503546



425 N. CANON DRIVE  
BEVERLY HILLS, CA 90210

YOSEMITE  
JAMES PERSE

AVEDON  
BEVERLY HILLS WEST RESTAURANT

NEGRONI

MAYBOURNE  
HOTEL GROUP

JAMES PERSE

PIZZERIA  
STREET

e. baldi

alo

il Pastaio

PERLA

RE-FINE

**NEWMARK**  
JAYLUCHS.COM

 **LOCKEHOUSE**

**JAY LUCHS**  
Vice Chairman  
T 310-407-6585  
jay.luchs@nrmk.com  
CA RE License #01260345

**MATTHEW FAINCHEIN**  
Executive Managing Director  
T 310-430-2548  
matthew@lockehouse.com  
CA RE License #01503546

N. SANTA MONICA BOULEVARD

Medical Building



HERITAGE  
MAKEUP STUDIO

Eyebar

TATEL

Offices

PARKING STRUCTURE



425 N. CANON DRIVE  
BEVERLY HILLS, CA 90210

Keller Williams  
The Courtyard  
Refine Luxury Goods

Negroni  
AVEDON  
Optics by Victor  
Shole  
Harcourts Real Estate

YOSEMITE  
JAMES PERSE

BRIGHTON WAY

Garfield Pharmacy

ca. bardi  
JAMES PERSE



R/Wall Paint Lounge  
future Modern Esthetics

future Bow  
JACKMOND  
LE MERVETTY  
260 Sample Sale LA

Village on Canon



DAYTON WAY

No. 275

Nest Seekers  
Formerly The Palm

Hilton & Hyland  
Julien's Auctions  
The Cafe at Tommy's Beverly Hills



George

MAYBOURNE  
HOTEL GROUP



BANK OF THE WEST  
BNP PARIBAS

The information contained herein has been obtained from sources deemed reliable but has not been verified and no guarantee, warranty or representation, either express or implied, is made with respect to such information. Terms of sale or lease and availability are subject to change or withdrawal without notice.

NEWMARK

JAYLUCHS.COM

Corporate RE Lic. #01355491



LOCKHOUSE

Corporate RE Lic. #01784084

JAY LUCHS

Vice Chairman  
T 310-407-6585

jay.luchs@nrmk.com

CA RE License #01260345

MATTHEW FAINCHTEIN

Executive Managing Director  
T 310-430-2548

matthew@lockhouse.com

CA RE License #01503546

N. SANTA MONICA BOULEVARD

The Wallis

Wallis Annenberg Center for the Performing Arts

S. SANTA MONICA BOULEVARD

Real Estate Office



drybar

JENNIFER FISHER  
Edelweiss Chocolates  
Selfish

ANNESISTERON



Umberto Salon



BRIGHTON WAY

dio  
Coats



Nazareth's  
Florie Couture  
Versai

GIUSEPPE FRANCO SALON

Mishka  
Beverly Hills Watch Co.

ESTIARLOTTO  
Lorka

Filmmon.tv/Salon 90210



corepower YOGA

DAYTON WAY

Obagi

Core Real Estate Group

MASTRO'S  
STEAKHOUSE



Sands & Associates

MiniLuxe  
LUXURIATOR

Barnes International Realty (offices)  
St. John

Super Care Drugs

CANALÉ

Westside Estate Agency

Rodeo Realty



CLIFTON WAY

Pacific Premier Bank

Fred Hayman Building



Prive

Coldwell Banker

New Pacific

WILSHIRE BOULEVARD

WILSHIRE BOULEVARD