

454 N. ROBERTSON BOULEVARD

WEST HOLLYWOOD, CA 90048



*CONCEPTUAL RENDERING, SEEKING CITY APPROVAL

JAY LUCHS Executive Vice Chairman 310-407-6585 jay.luchs@nmrk.com CA RE Lic. #01260345 **JAYLUCHS.COM**

NEWMARK
PACIFIC

jayluchs.com
For Lease
310 407 6585
Jay Luchs
Los Angeles



ADDRESS

454 N. Robertson Boulevard
West Hollywood, CA 90048

USE

Retail/Creative Office/Gallery/
Showroom

RENT

Available upon Request

SIZE

Ground Floor: ±2,227 SF
Mezzanine: ±903 SF
Roof Deck: ±712 SF
TOTAL: ±3,842 SF

*SEEKING CITY APPROVAL

AVAILABLE

Q2 2026



JAY LUCHS Executive Vice Chairman 310-407-6585 jay.luchs@nmrk.com CA RE Lic. #01260345 **JAYLUCHS.COM**

NEWMARK
PACIFIC



HIGHLIGHTS

South of Melrose Avenue (Filled with fashion brands, restaurants, and home stores including: Maxfield, Chrome Hearts, and more)

Steps from Cha Cha Matcha

Surrounded by Robertson North residential



*CONCEPTUAL RENDERING, SEEKING CITY APPROVAL

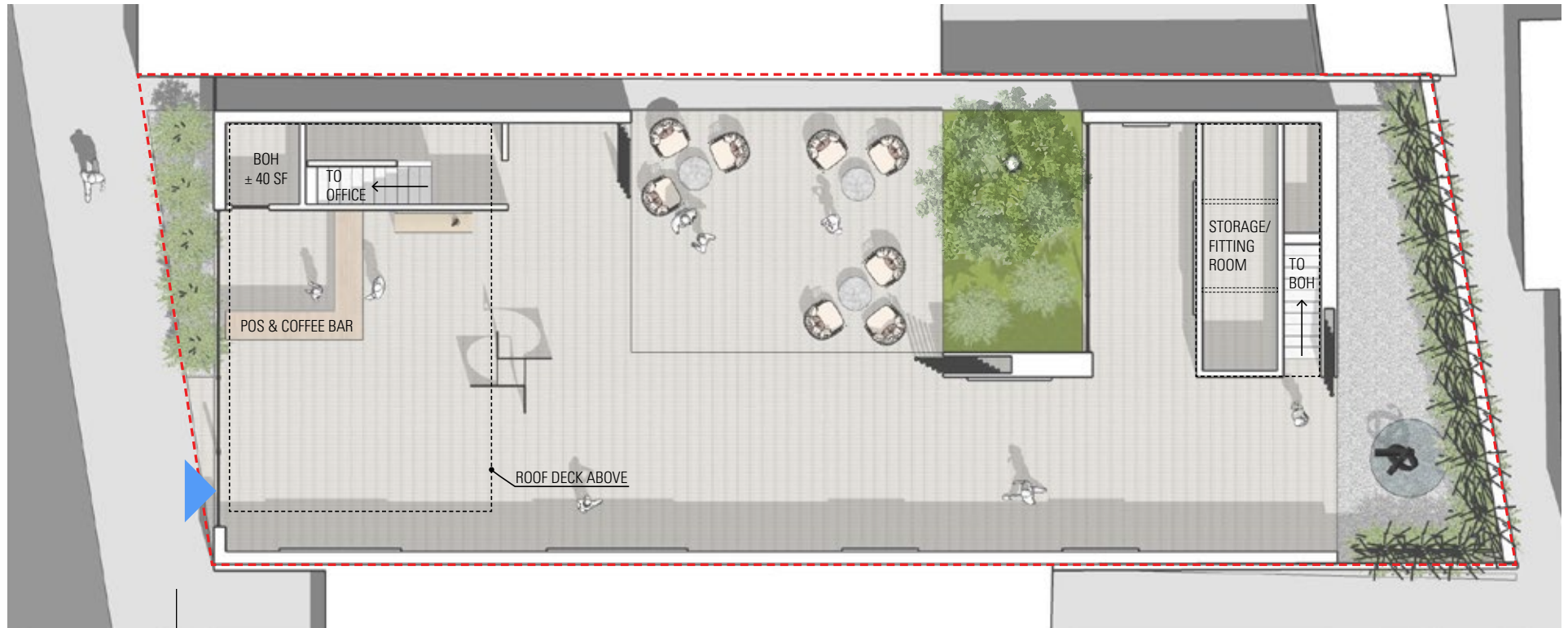
Renderings shown for design intent only. Final construction may vary based on tenant improvements and permitting.

JAY LUCHS Executive Vice Chairman 310-407-6585 jay.luchs@nmrk.com CA RE Lic. #01260345 **JAYLUCHS.COM**

NEWMARK
PACIFIC



GROUND FLOOR + COURTYARD



*CONCEPTUAL PLAN, SEEKING CITY APPROVAL

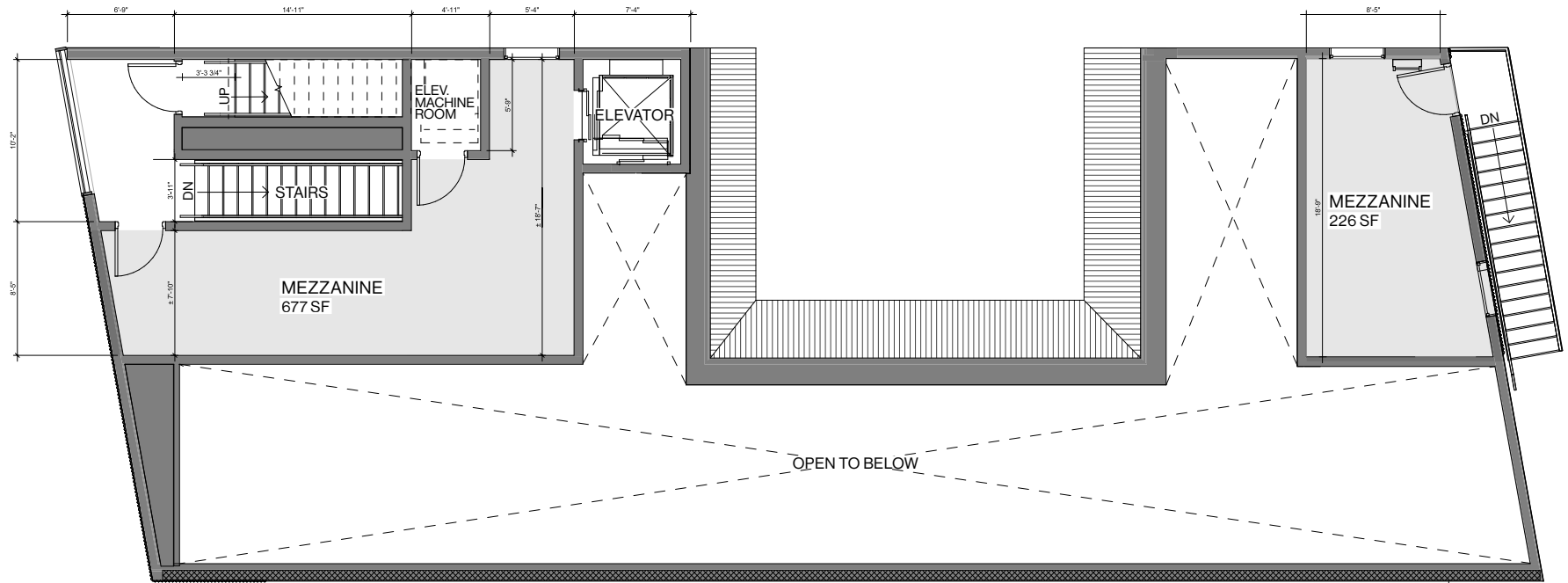
±2,227 SF

JAY LUCHS Executive Vice Chairman 310-407-6585 jay.luchs@nmrk.com CA RE Lic. #01260345 **JAYLUCHS.COM**

NEWMARK
PACIFIC

jayluchs.com
For Lease
310 407 6585
Jay Luchs
Los Angeles

MEZZANINE



*CONCEPTUAL PLAN, SEEKING CITY APPROVAL

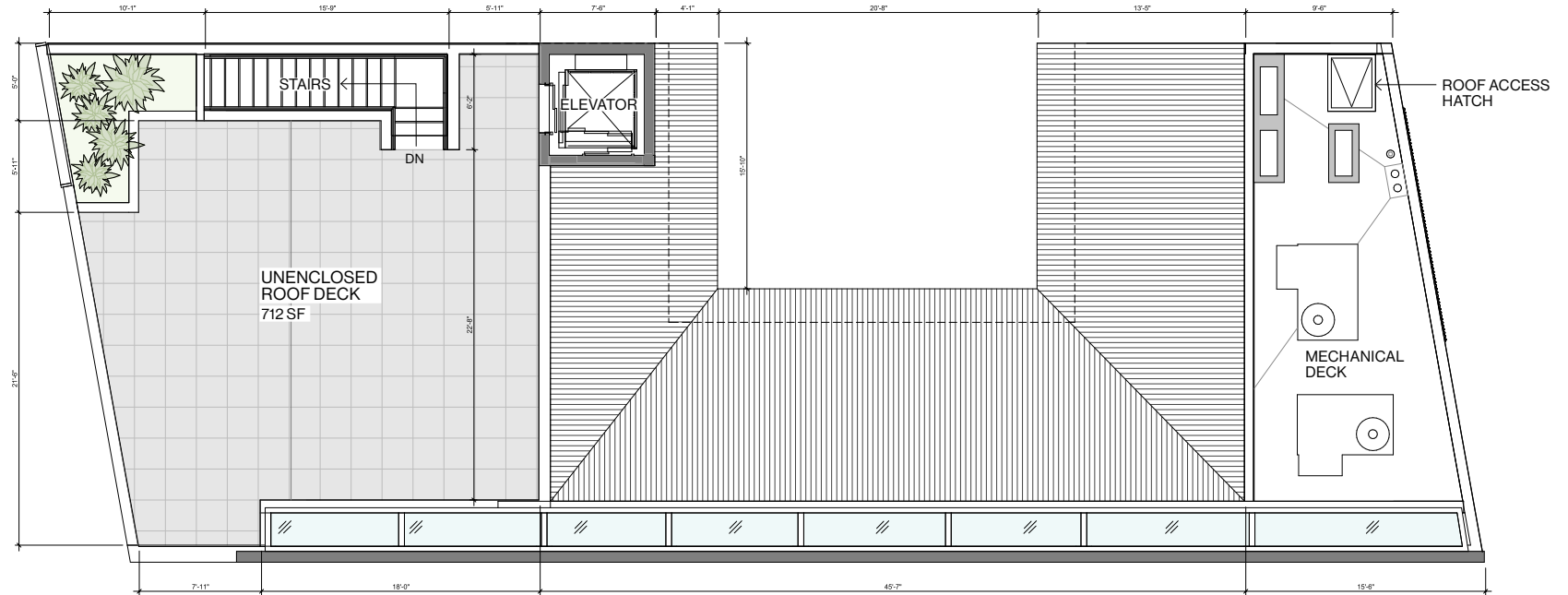
±903 SF

JAY LUCHS Executive Vice Chairman 310-407-6585 jay.luchs@nmrk.com CA RE Lic. #01260345 **JAYLUCHS.COM**

NEWMARK
PACIFIC

jayluchs.com
For Lease
310 407 6585
Jay Luchs
Los Angeles

ROOF DECK



*CONCEPTUAL PLAN, SEEKING CITY APPROVAL

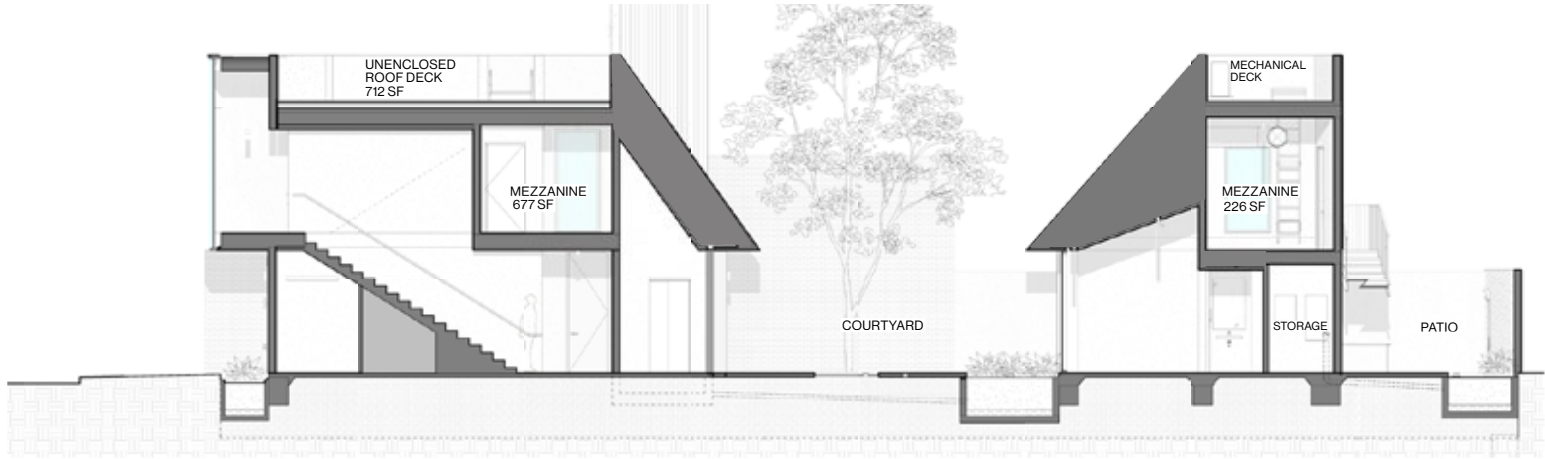
±712 SF

JAY LUCHS Executive Vice Chairman 310-407-6585 jay.luchs@nmrk.com CA RE Lic. #01260345 **JAYLUCHS.COM**

NEWMARK
PACIFIC

jayluchs.com
For Lease
310 407 6585
Jay Luchs
Los Angeles

BUILDING SECTION



A BUILDING SECTION THROUGH COURTYARD

*CONCEPTUAL PLAN, SEEKING CITY APPROVAL

COURTYARD SECTION



A BUILDING SECTION THROUGH COURTYARD

*CONCEPTUAL PLAN, SEEKING CITY APPROVAL

JAY LUCHS Executive Vice Chairman 310-407-6585 jay.luchs@nmrk.com CA RE Lic. #01260345 JAYLUCHS.COM

NEWMARK
PACIFIC

jayluchs.com

For Lease
310 407 6585

Jay Luchs

Los Angeles

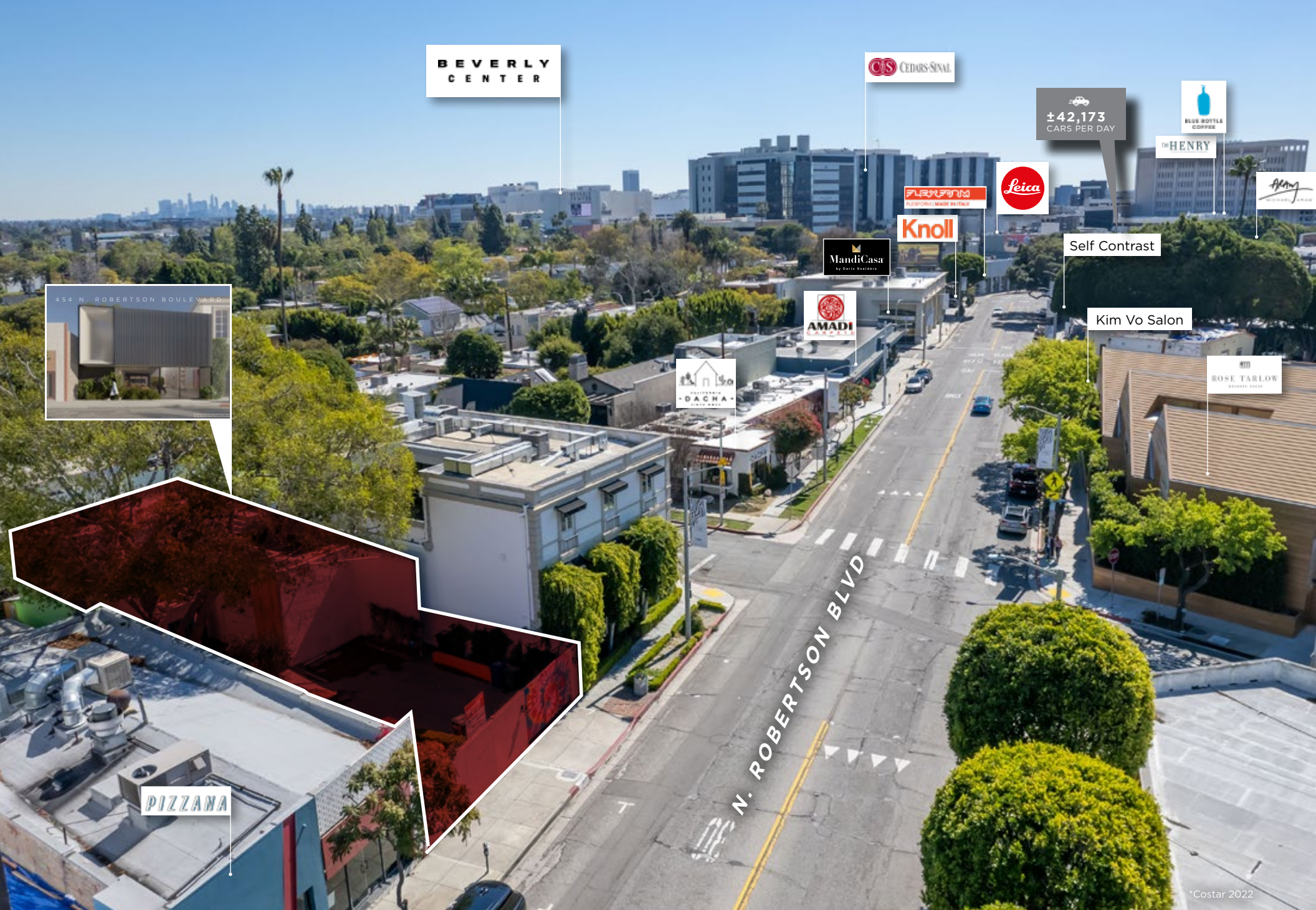
CURRENT SITE



JAY LUCHS Executive Vice Chairman 310-407-6585 jay.luchs@nmrk.com CA RE Lic. #01260345 **JAYLUCHS.COM**

NEWMARK
PACIFIC

jayluchs.com
For Lease
310 407 6585
Jay Luchs
Los Angeles



BEVERLY
CENTER

CIS CEDARS-SINAI

±42,173
CARS PER DAY

BLUE BOTTLE
COFFEE

THE HENRY

Leica

FLUORIN
FLUOROCRYL MADE IN ITALY

Knoll

MandiCasa
by DAVID BAZZANO

AMADI
CASA

Self Contrast

Kim Vo Salon

ROSE TARLOW
BEVERLY HILLS

454 N. ROBERTSON BOULEVARD

PIZZANA

N. ROBERTSON BLVD

*Costar 2022

JAY LUCHS Executive Vice Chairman 310-407-6585 jay.luchs@nmrk.com CA RE Lic. #01260345 JAYLUCHS.COM

NEWMARK
PACIFIC

jayluchs.com
For Lease
310 407 6585
Jay Luchs
Los Angeles



The information contained herein has been obtained from sources deemed reliable but has not been verified and no guarantee, warranty or representation, either express or implied, is made with respect to such information. Terms of sale or lease and availability are subject to change or withdrawal without notice.

JAY LUCHS Executive Vice Chairman 310-407-6585 jay.luchs@nmrk.com CA RE Lic. #01260345 **JAYLUCHS.COM**

NEWMARK
PACIFIC

Corporate RE License #01796698

jayluchs.com
For Lease
310 407 6585
Jay Luchs
Los Angeles