

THE PARK

SANTA MONICA

54,000 Square Feet of Retail in Prime Downtown Santa Monica | Anchored by Trader Joe's

500 BROADWAY | THEPARKSANTAMONICA.COM

Designed and Made for Those Who Dive into Life

At The Park Santa Monica wellness, convenience, and sophistication make up every detail. From street level retail to rooftop park, The Park demonstrate the ways living can be enhanced by thoughtful amenities, modern finishes and a refined lifestyle





HUNTER

Fairmont

VANILLA BAKESHOP

Planet Smoothie

C@LAPASTA

PROPER
Calabra

CASSIA
ESTER'S
WINE SHOP

SANTA MONICA
HISTORY MUSEUM

FRITTO MISTO

BLUE DAISY CAFE

THE HIVE
CRIMSON

THE PARK



M Expo Light Rail Station
Colorado Avenue/4th Street

10

THIRD STREET
PROMENADE

HIHO
UOVO

HOTEL
SHANGRI-LA

Elephante

ALO

alo

HOTEL CARMEL

NORDSTROM

SANTA MONICA
place

ACLIGHT

BLUE
PLATE

TONGVA PARK
+ PALISADES
GARDEN WALK

LOEWS
HOTELS

THE VILLAGE
AT SANTA
MONICA

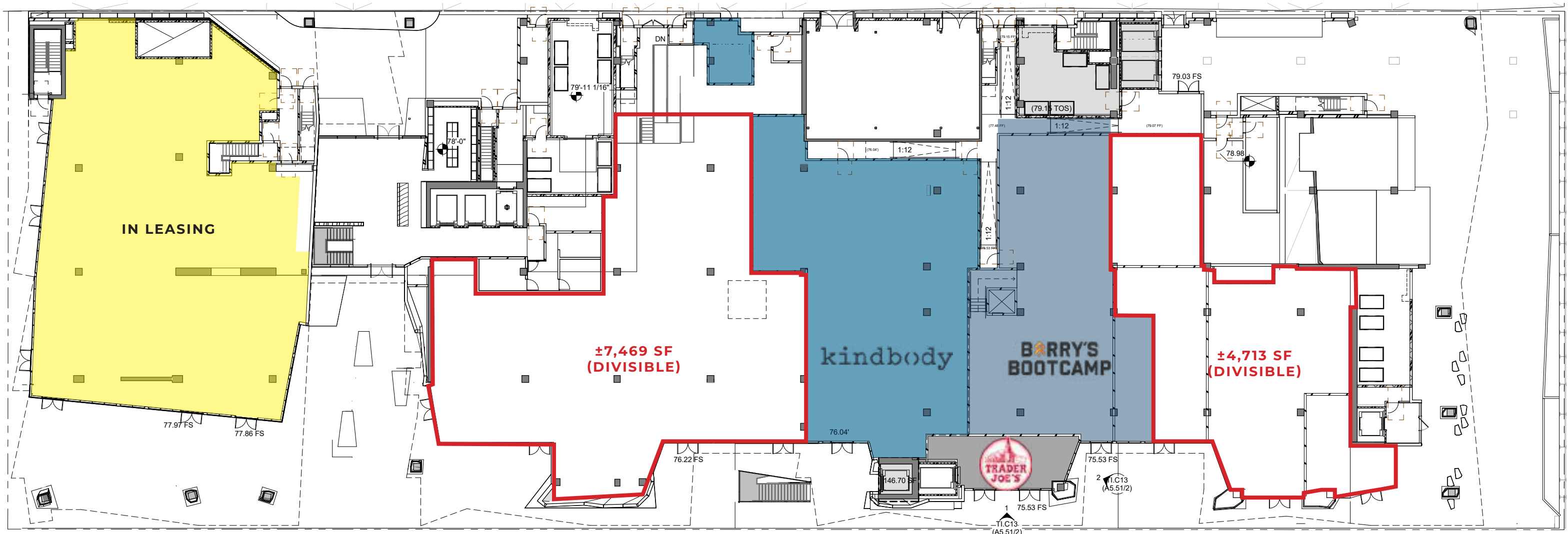
JW MARRIOTT
LE MERIGOT

VICEROY

SANTA MONICA
PIER



03

Ground Level

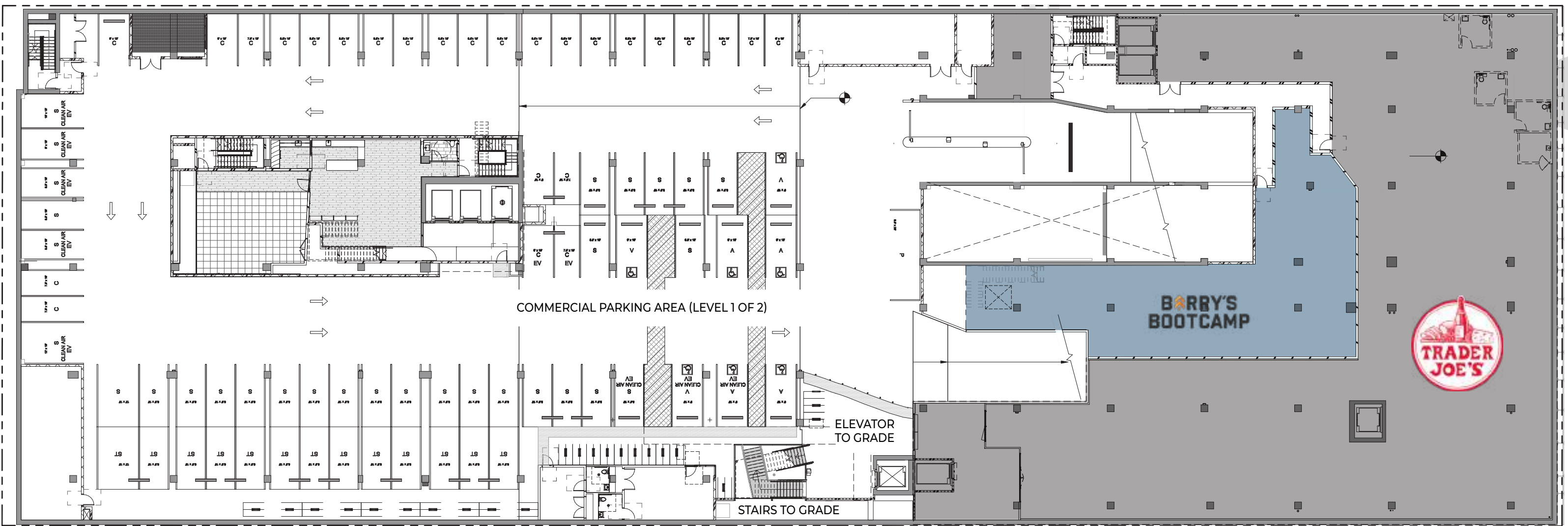


Available Space

Ground Floor

-  ±7,469 SF (Divisible)
-  ±4,713 SF (Divisible)

P1 Level

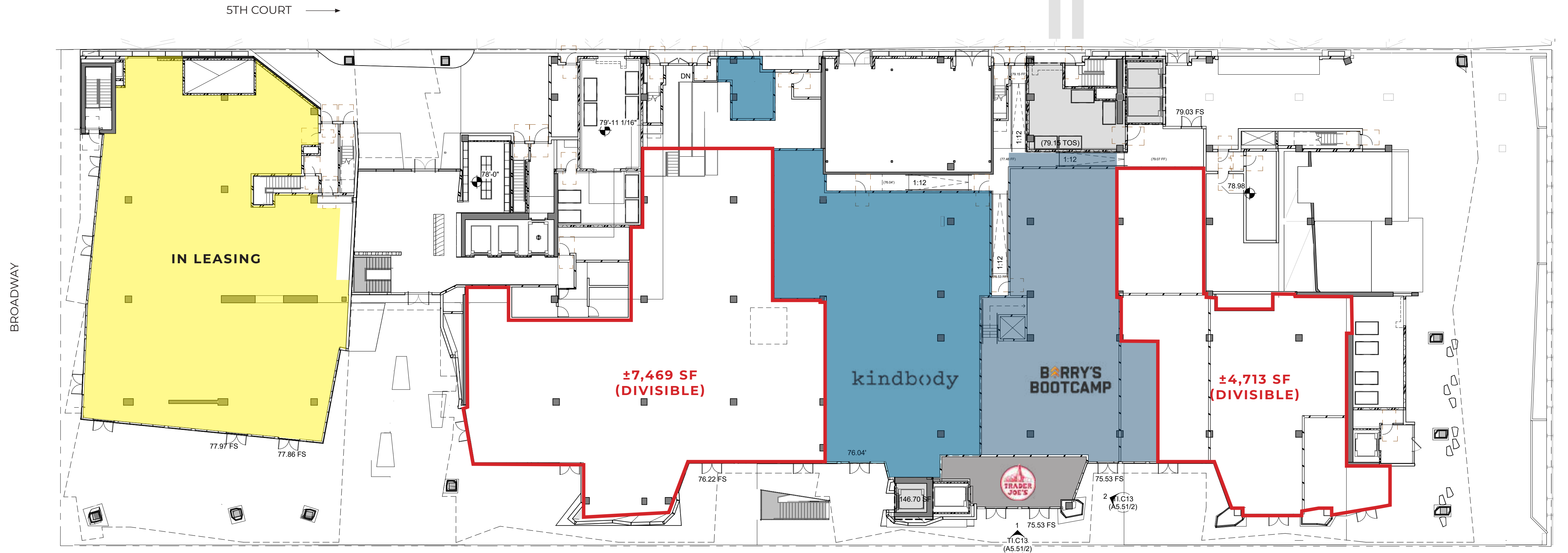


Now Open!



Trader Joe's

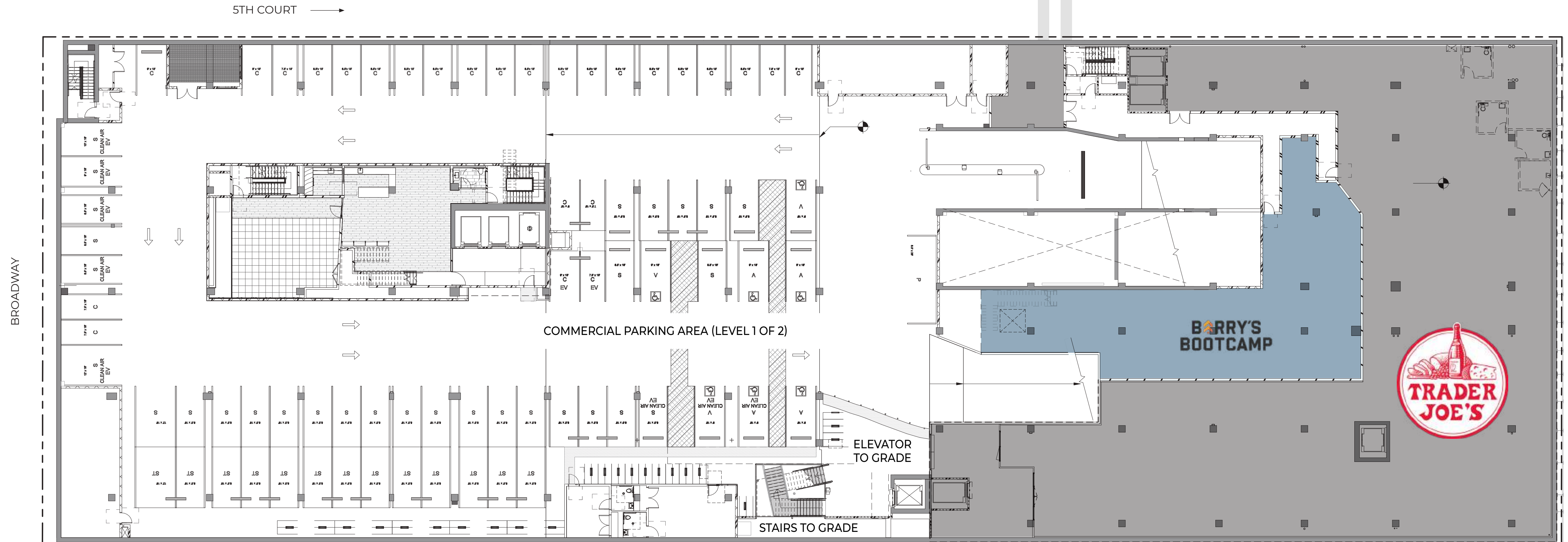
National chain of neighborhood grocery stores providing quality products and everyday necessities in over 500 locations in 42 states nationwide



Ground Floor

The Park Santa Monica has many street level options from approximately 7,500 SF down to 500 SF based on retailers needs.

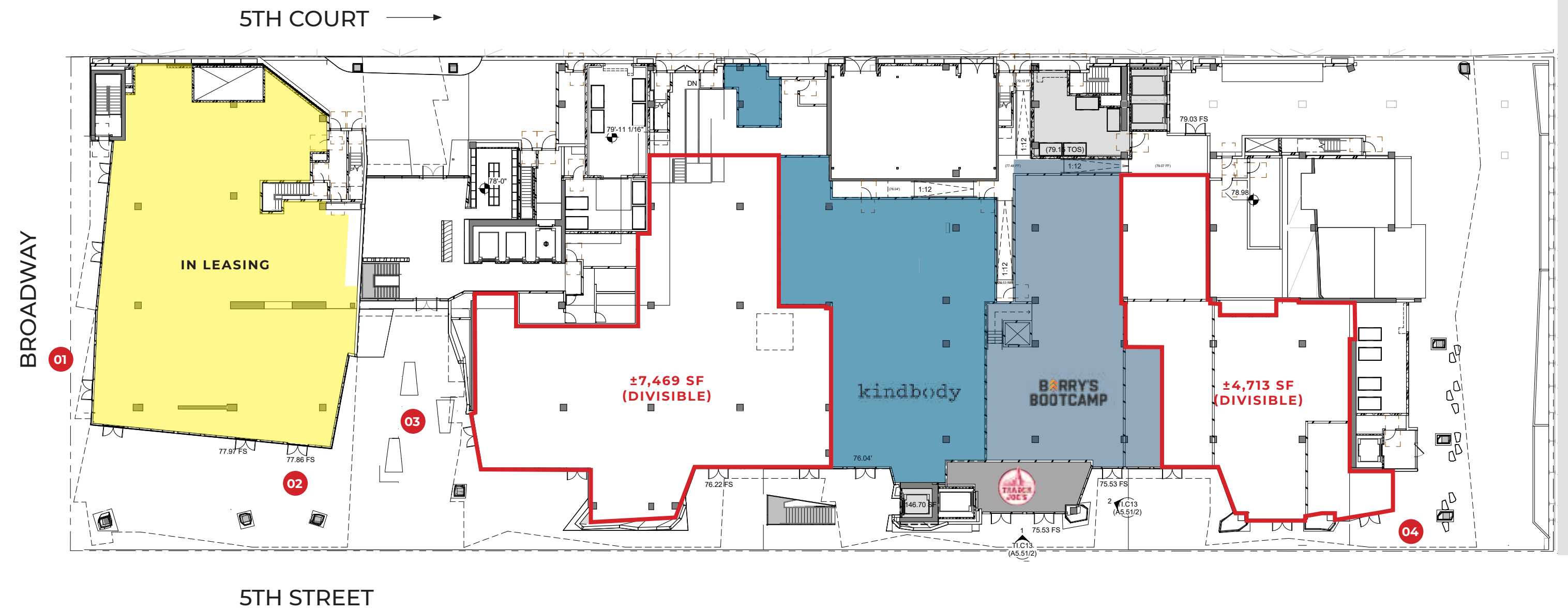




*Reference Photo

P1 Level

The Park Santa Monica has 250+ parking spots on two below grade levels for retail customers. Dedicated elevators and stairs provide immediate access between street and below grade levels. The Park is anchored by national chain grocery store Trader Joe's and a cutting-edge fitness provider.






Elevated Wellbeing

Luxury living in the heart of Santa Monica. The Park features 249 units of luxury studios, one, two, three bedroom apartments with sweeping views of the city of Santa Monica and The Pacific Ocean.



Santa Monica Demographics

Population			
	37,438	180,053	420,621
	1 Mile	3 Miles	5 Miles
Average Household Income			
	\$137,101	\$156,489	\$152,387
	1 Mile	3 Miles	5 Miles
Median Age			
	42.1	41.3	38.8
	1 Mile	3 Miles	5 Miles

*Esri 2021





One-Acre Private Park

The rooftop park atop the apartment building is comprised of four interconnected experiences with panoramic vistas of the Pacific Ocean. The Park features outdoor and indoor luxury amenities including:

- An open green space with a dedicated outdoor fitness center
- A rooftop pool with unparalleled ocean views
- Cabanas and chaise lounges for sunbathing
- Flexible lawn space
- Private bar
- Gaming area with outdoor foosball & billiards
- Planters where residents can pick a variety of items such as fresh herbs, fruits, and vegetables to cook at the adjacent Sonoma-style outdoor chef's kitchen and bar
- Shaded dog run
- Bi-level wellness-focused Residence Club with Woodway and Peloton cardio equipment
- Spa with a Himalayan Salt sauna and steam room, heated loungers, massage and meditation rooms
- Comprehensive fitness programming including yoga, group classes, and personal training sessions
- Library and co-working cafe
- Valet parking
- Butler service and package delivery to your home
- Fully-integrated resident app to seamlessly manage your entire living experience
- Mesh wi-fi network throughout the property
- Hospitality Ambassador and concierge services
- Laundry and dry-cleaning services
- Surfboard rentals and storage
- Secure bike storage
- Pet care and grooming
- Car wash and detailing
- EV scooters and charging stations

Broadway Frontage



Connected, Convenient, Cultured

The Park is steps from some of Santa Monica's hottest locations. The 3rd Street Promenade and restaurant row of Santa Monica Boulevard are moments away. The Los Angeles Metro Exposition Line terminus drops people two blocks from The Park's doorstep. Visitors flock to Santa Monica for the nearby Pier and beach. Being here is being a part of this vibrant and active destination

5th Street Corridor

5th Street retail opportunities grow in size. Street window storefronts spread the presence of The Park along this busy corridor. A promenade all it's own, these retail spaces face the new downtown Target. With plenty of cafe and outdoor seating space, there are fewer restrictions for gathering customers.





The Park brings all of these advantages together into a new corridor for retail, restaurants and fitness.



The Park Santa Monica is a next step in the city's luxury offering. With leading companies like Google, Apple, Facebook, YouTube, Hulu, Snap, Universal Music, and Riot Games calling the city home, it's got success built into the streets and sidewalks.

The city boasts a varied population of students, professionals, vacationers, retirees and local tourists. The exclusive neighborhoods of Brentwood and Pacific Palisades are neighboring communities whose residents eat, shop, and play in Downtown Santa Monica.



THE PARK

SANTA MONICA



500 BROADWAY | THEPARKSANTAMONICA.COM

CONTACT

Jay Luchs
jay.luchs@nmrk.com
T 310-407-6585
CA RE Lic. #01260345
jayluchs.com

Genny Chang
genny.chang@nmrk.com
T 310-407-6588
CA RE Lic. #01467375

The information contained herein has been obtained from sources deemed reliable but has not been verified and no guarantee, warranty or representation, either express or implied, is made with respect to such information. Terms of sale or lease and availability are subject to change or withdrawal without notice.

NEWMARK