

**5030**  
WEST PICO  
BOULEVARD



**JAY LUCHS**  
**ANDREW JENNISON**  
**NEWMARK**  
PACIFIC

Vice Chairman  
Vice Chairman  
**JAYLUCHS.COM**

310-407-6585  
310-980-1208

[jay.luchs@nmrk.com](mailto:jay.luchs@nmrk.com)  
[andrew.jennison@nmrk.com](mailto:andrew.jennison@nmrk.com)

CA RE Lic. #01260345  
CA RE Lic. #01275687

jayluchs.com  
**For Lease**  
**310 407 6585**  
**Jay Luchs**  
Los Angeles





**5030**  
WEST PICO  
BOULEVARD

## PROPERTY OVERVIEW

### ADDRESS

5030 W. Pico Boulevard  
Los Angeles, CA 90019

### USE

Retail/Office/Creative Compound/Gallery

### SIZE

Level 1	±5,776 SF
Level 2	±2,598 SF
Level 3	±1,604 SF
<b>Total</b>	<b>±9,978 SF</b>

### RENT

Available upon Request

### PARKING

Up to six parking spaces

### HIGHLIGHTS

- Adjacent to world renowned Perrotin gallery
- Notable nearby galleries include: Pace Gallery, David Kordansky Gallery, Mater Studio, Band of Vices, and TORUS
- Renovated building with new systems, roofs, custom lighting, skylights, polished concrete and cork floors, custom built-ins, and bathrooms
- Includes offices, garage, bathrooms, and kitchenette
- Loft-like metal-encased windows with electric shades

**JAY LUCHS**  
**ANDREW JENNISON**  
**NEWMARK**  
PACIFIC

Vice Chairman  
Vice Chairman  
**JAYLUCHS.COM**

310-407-6585  
310-980-1208

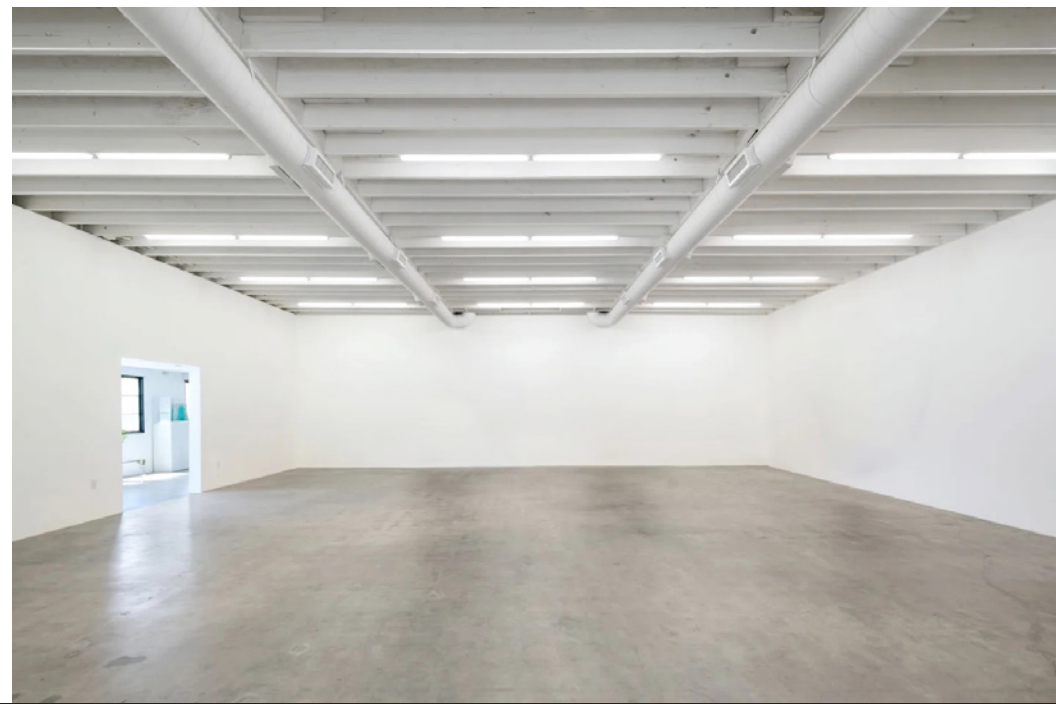
jay.luchs@nrmk.com  
andrew.jennison@nrmk.com

CA RE Lic. #01260345  
CA RE Lic. #01275687

jayluchs.com  
**For Lease**  
**310 407 6585**  
**Jay Luchs**  
Los Angeles



5030  
WEST PICO  
BOULEVARD



**JAY LUCHS**  
**ANDREW JENNISON**  
**NEWMARK**  
PACIFIC

Vice Chairman  
Vice Chairman  
**JAYLUCHS.COM**

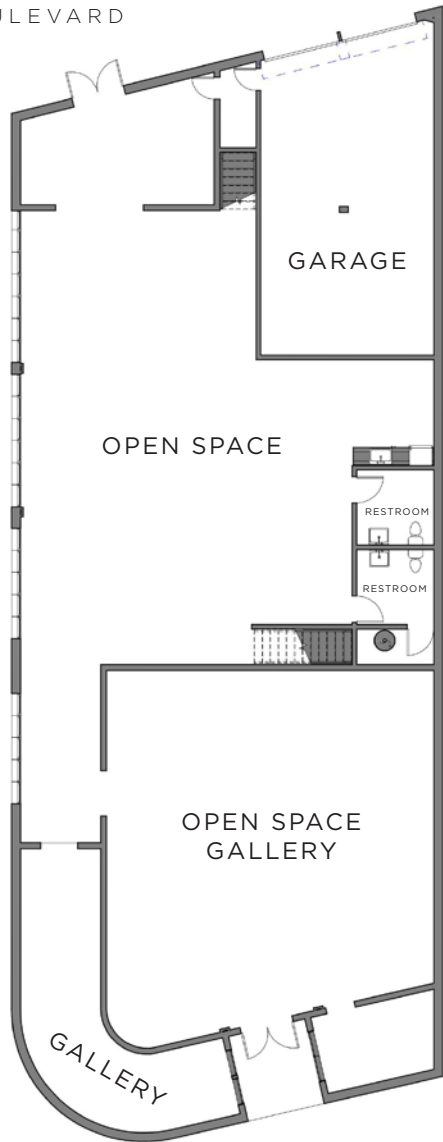
310-407-6585  
310-980-1208

[jay.luchs@nrmk.com](mailto:jay.luchs@nrmk.com)  
[andrew.jennison@nrmk.com](mailto:andrew.jennison@nrmk.com)

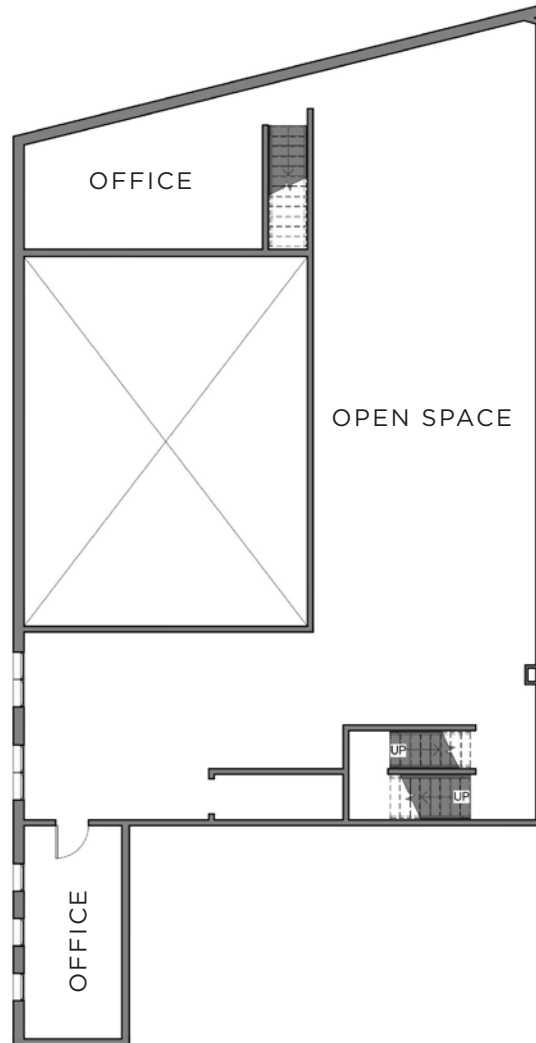
CA RE Lic. #01260345  
CA RE Lic. #01275687

jayluchs.com  
**For Lease**  
**310 407 6585**  
**Jay Luchs**  
Los Angeles

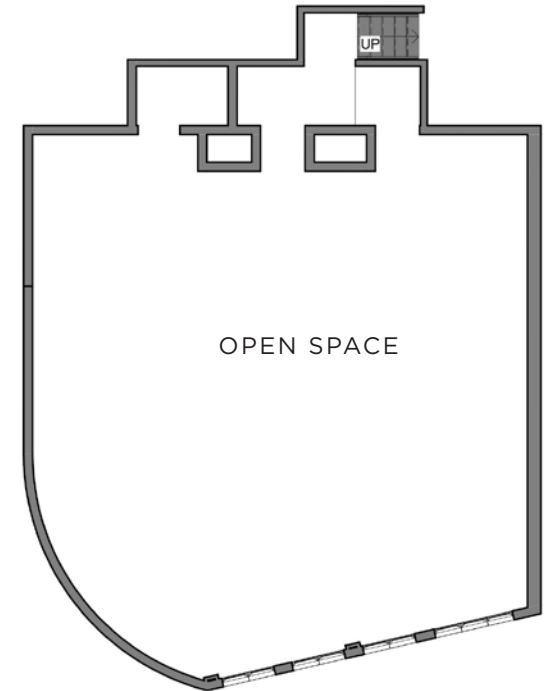
**5030**  
WEST PICO  
BOULEVARD



**LEVEL 1**  
±5,776 SF



**LEVEL 2**  
±2,598 SF



\*NOT ALL STRUCTURAL ELEMENTS DEPICTED

**LEVEL 3**  
±1,604 SF

**JAY LUCHS**  
**ANDREW JENNISON**  
**NEWMARK**  
PACIFIC

Vice Chairman  
Vice Chairman  
**JAYLUCHS.COM**

310-407-6585  
310-980-1208

jay.luchs@nrmrk.com  
andrew.jennison@nrmrk.com

CA RE Lic. #01260345  
CA RE Lic. #01275687

jayluchs.com  
**For Lease**  
**310 407 6585**  
**Jay Luchs**  
Los Angeles



### 5050 W. Pico Blvd

Adjacent to a large six-story mixed-use building featuring 79 units, approximately 2,100 SF of ground-floor retail space

5030

WEST PICO  
BOULEVARD

CENTURY  
CITY

Multiple developments proposed/  
under construction in the nearby area

**Within one mile from 5030 W. Pico Blvd**

1401 S Curson Ave - 5 Multifamily units  
4506 Dockweiler St - 20 Multifamily units  
930 S Mansfield Ave - 19 Multifamily units  
1110 S Spaulding Ave - 26 Multifamily units  
4600 W Washington Blvd - 56 Multifamily units  
4601 W Washington Blvd - 33 Multifamily units  
5358-5376 Wilshire Blvd - 419 Multifamily units  
5891 W Olympic Blvd - 118 Multifamily units  
1818 Clyde Ave - 10,500 SF Apartment building  
1009 S Cochran Ave - 5 Multifamily units  
4326-4532 St Charles Pl - 8 Multifamily units

\*Costar 2024

The information contained herein has been obtained from sources deemed reliable but has not been verified and no guarantee, warranty or representation, either express or implied, is made with respect to such information. Terms of sale or lease and availability are subject to change or withdrawal without notice.

**JAY LUCHS**  
**ANDREW JENNISON**  
**NEWMARK**  
PACIFIC

Vice Chairman 310-407-6585  
Vice Chairman 310-980-1208  
**JAYLUCHS.COM**  
Corporate RE Lic. #01796698

jay.luchs@nrmk.com  
andrew.jennison@nrmk.com

CA RE Lic. #01260345  
CA RE Lic. #01275687

For Lease  
310 407 6585  
**Jay Luchs**  
Los Angeles