

**5030**  
WEST PICO  
BOULEVARD

Latin Idol



**JAY LUCHS** Executive Vice Chairman 310-407-6585 [jay.luchs@nmrk.com](mailto:jay.luchs@nmrk.com) CA RE Lic. #01260345 **JAYLUCHS.COM**

**NEWMARK**  
PACIFIC

jayluchs.com  
**For Lease**  
**310 407 6585**  
**Jay Luchs**  
Los Angeles



**5030**  
WEST PICO  
BOULEVARD



## ADDRESS

5030 W. Pico Boulevard  
Los Angeles, CA 90019

## USE

Retail/Office/  
Creative Compound/Gallery

## SIZE

±9,978 SF

## RENT

Available upon Request

## PARKING

Up to six parking spaces

## HIGHLIGHTS

- Adjacent to world renowned Perrotin gallery
- Notable nearby galleries include: Pace Gallery, David Kordansky Gallery, Mater Studio, Band of Vices, and TORUS
- Renovated building with new systems, roofs, custom lighting, skylights, polished concrete and cork floors, custom built-ins, and bathrooms
- Includes offices, garage, bathrooms, and kitchenette
- Loft-like metal-encased windows with electric shades

**JAY LUCHS** Executive Vice Chairman 310-407-6585 jay.luchs@nrmk.com CA RE Lic. #01260345

**JAYLUCHS.COM**

**NEWMARK**  
PACIFIC

jayluchs.com  
**For Lease**  
**310 407 6585**  
**Jay Luchs**  
Los Angeles



5030  
WEST PICO  
BOULEVARD

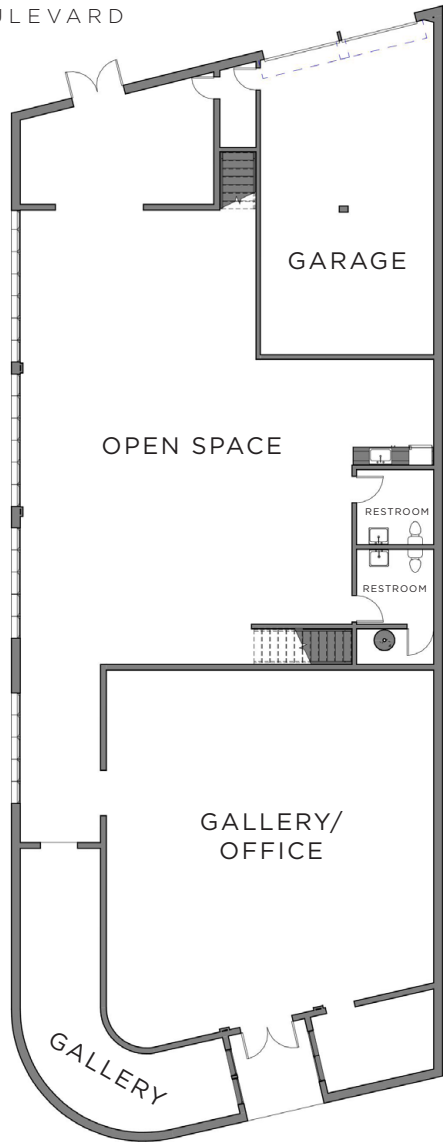


JAY LUCHS Executive Vice Chairman 310-407-6585 jay.luchs@nrmk.com CA RE Lic. #01260345 JAYLUCHS.COM

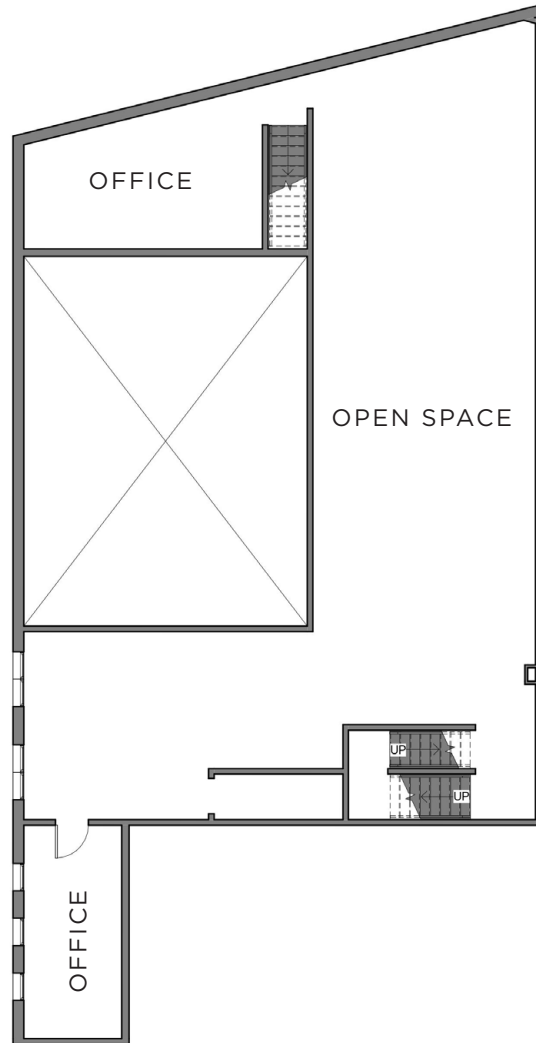
NEWMARK  
PACIFIC

jayluchs.com  
For Lease  
310 407 6585  
Jay Luchs  
Los Angeles

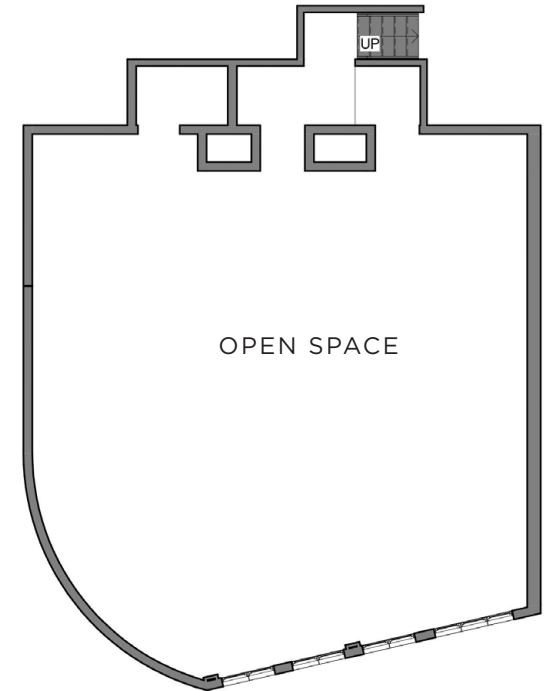
**5030**  
WEST PICO  
BOULEVARD



**LEVEL 1**



**LEVEL 2**



\*NOT ALL STRUCTURAL ELEMENTS DEPICTED

**LEVEL 3**

**JAY LUCHS** Executive Vice Chairman 310-407-6585 jay.luchs@nrmk.com CA RE Lic. #01260345 **JAYLUCHS.COM**

**NEWMARK**  
PACIFIC

jayluchs.com  
**For Lease**  
**310 407 6585**  
**Jay Luchs**  
Los Angeles



**5030**  
WEST PICO  
BOULEVARD



The information contained herein has been obtained from sources deemed reliable but has not been verified and no guarantee, warranty or representation, either express or implied, is made with respect to such information. Terms of sale or lease and availability are subject to change or withdrawal without notice.

**JAY LUCHS** Executive Vice Chairman 310-407-6585 jay.luchs@nmrk.com CA RE Lic. #01260345 **JAYLUCHS.COM**

**NEWMARK**  
PACIFIC

Corporate RE Lic. #01796698

jayluchs.com  
**For Lease**  
**310 407 6585**  
**Jay Luchs**  
Los Angeles