



5030 W. PICO BLVD

RETAIL/OFFICE/CREATIVE
COMPOUND/GALLERY FOR LEASE

NEWMARK
PACIFIC

JAY LUCHS
Executive Vice Chairman
T 310-407-6585
jay.luchs@nmrk.com
CA RE Lic. #01260345


**STAFFORD
COMMERCIAL**

CHRIS SPIRITO
Vice Chairman
T 310-270-3003
cs@staffordcommercial.com
CA RE Lic. #01474435

DARLENE FORAL
Vice Chairman/Managing Principal
T 310-467-5336
darlene@staffordcommercial.com
CA RE Lic. #02213321

PROPERTY HIGHLIGHTS

- Adjacent to world renowned Perrotin gallery
- Notable nearby galleries include: Pace Gallery, David Kordansky Gallery, Mater Studio, Band of Vices, and TORUS
- Renovated building with new systems, roofs, custom lighting, skylights, polished concrete and cork floors, custom built-ins, and bathrooms
- Includes offices, garage, bathrooms, kitchenette, and up to six parking spaces
- Loft-like metal-encased windows with electric shades



OVERVIEW

SIZE

Approximately 9,978 SF

USE

Retail/Office/Creative
Compound/Gallery

AVAILABLE

Immediate

RENT

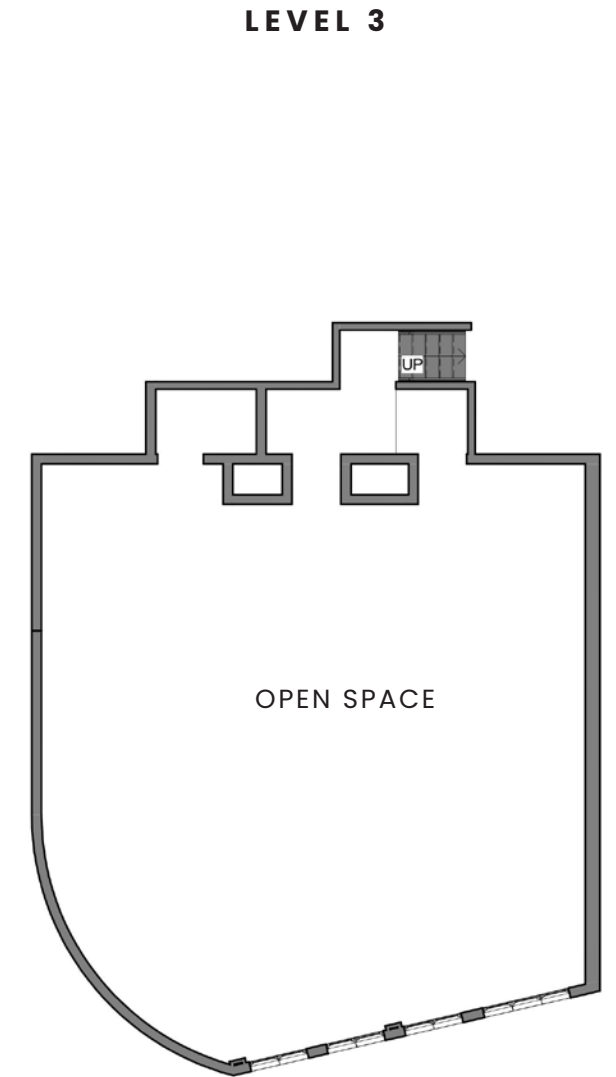
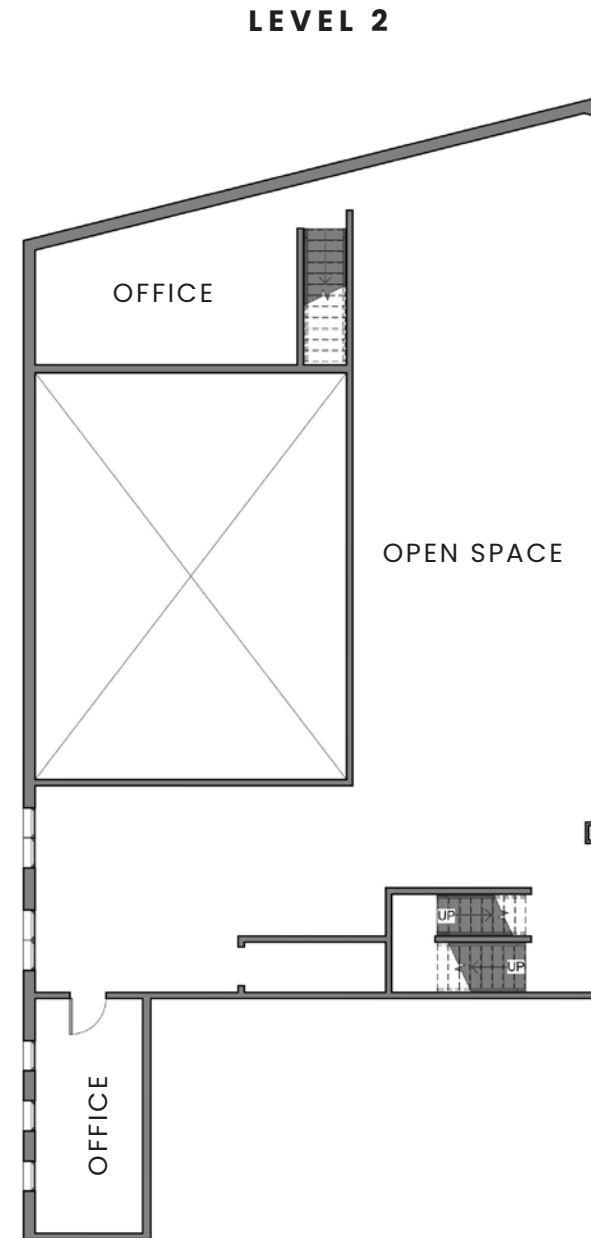
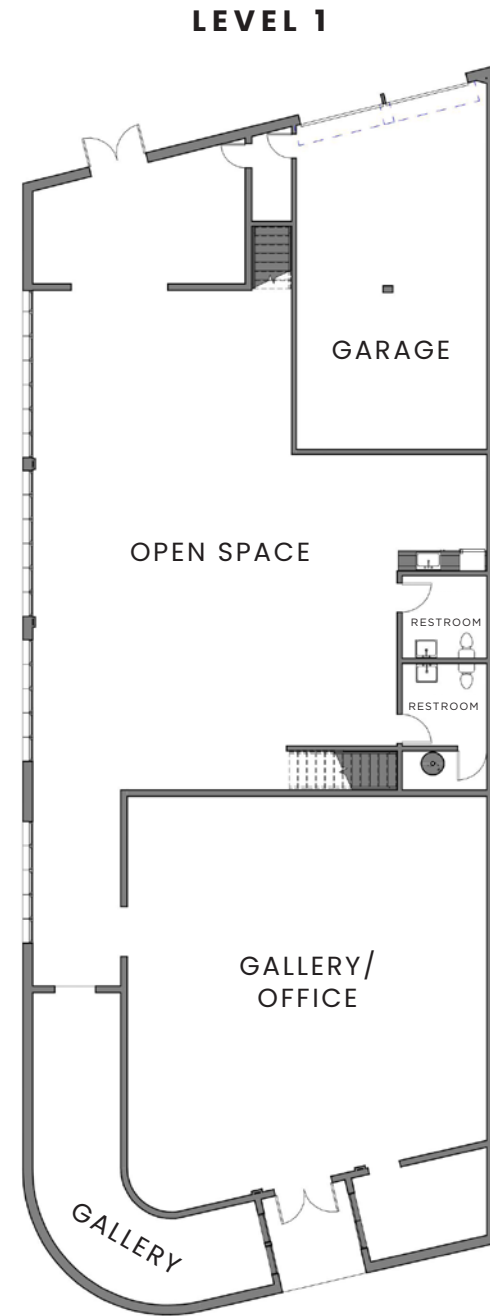
Available upon Request

NEWMARK
PACIFIC

STAFFORD
COMMERCIAL

FLOOR PLAN

LEVEL 1: ±5,776 SF
LEVEL 2: ±2,598 SF
LEVEL 3: ±1,604 SF
TOTAL: ±9,978 SF



*NOT ALL STRUCTURAL ELEMENTS DEPICTED

5030 W. PICO BLVD

JAYLUCHS.COM

JAY LUCHS GROUP

JAY LUCHS
Executive Vice Chairman
T 310-407-6585
jay.luchs@nrmk.com
CA RE Lic. #01260345



CHRIS SPIRITO
Vice Chairman
T 310-270-3003
cs@staffordcommercial.com
CA RE Lic. #01474435

DARLENE FORAL
Vice Chairman/Managing Principal
T 310-467-5336
darlene@staffordcommercial.com
CA RE Lic. #02213321

CORPORATE RE LICENSE #01796698

NEWMARK
PACIFIC

The information contained herein has been obtained from sources deemed reliable but has not been verified and no guarantee, warranty or representation, either express or implied, is made with respect to such information. Terms of sale or lease and availability are subject to change or withdrawal without notice.