

3RD +
TRACTION



±1,200 SF RETAIL SPACE AVAILABLE
ARTS DISTRICT | DOWNTOWN LA

JAY LUCHS
Executive Vice Chairman
T 310-407-6585
jay.luchs@nmrk.com
CA RE Lic. #01260345
JAYLUCHS.COM

NEWMARK
PACIFIC

BRIAN ABDI
Director
T 310-275-9222
ba@bridgerealestate.com
CA RE Lic. #01879399

BR
BRIDGE
REAL ESTATE

**ADDRESS**

702 TRACTION AVENUE

USE

RETAIL

SIZE

±1,200 SF

RATE

AVAILABLE UPON REQUEST

3RD +**TRACTION****JAY LUCHS**

Executive Vice Chairman

T 310-407-6585

jay.luchs@nmrk.com

CA RE Lic. #01260345

JAYLUCHS.COM

NEWMARK
PACIFIC**BRIAN ABDI**

Director

T 310-275-9222

ba@bridgerealestate.com

CA RE Lic. #01879399

BR
BRIDGE
REAL ESTATE

PHOTOS



3RD +

TRACTION

JAY LUCHS

Executive Vice Chairman
T 310-407-6585
jay.luchs@nrmk.com
CA RE Lic. #01260345
JAYLUCHS.COM

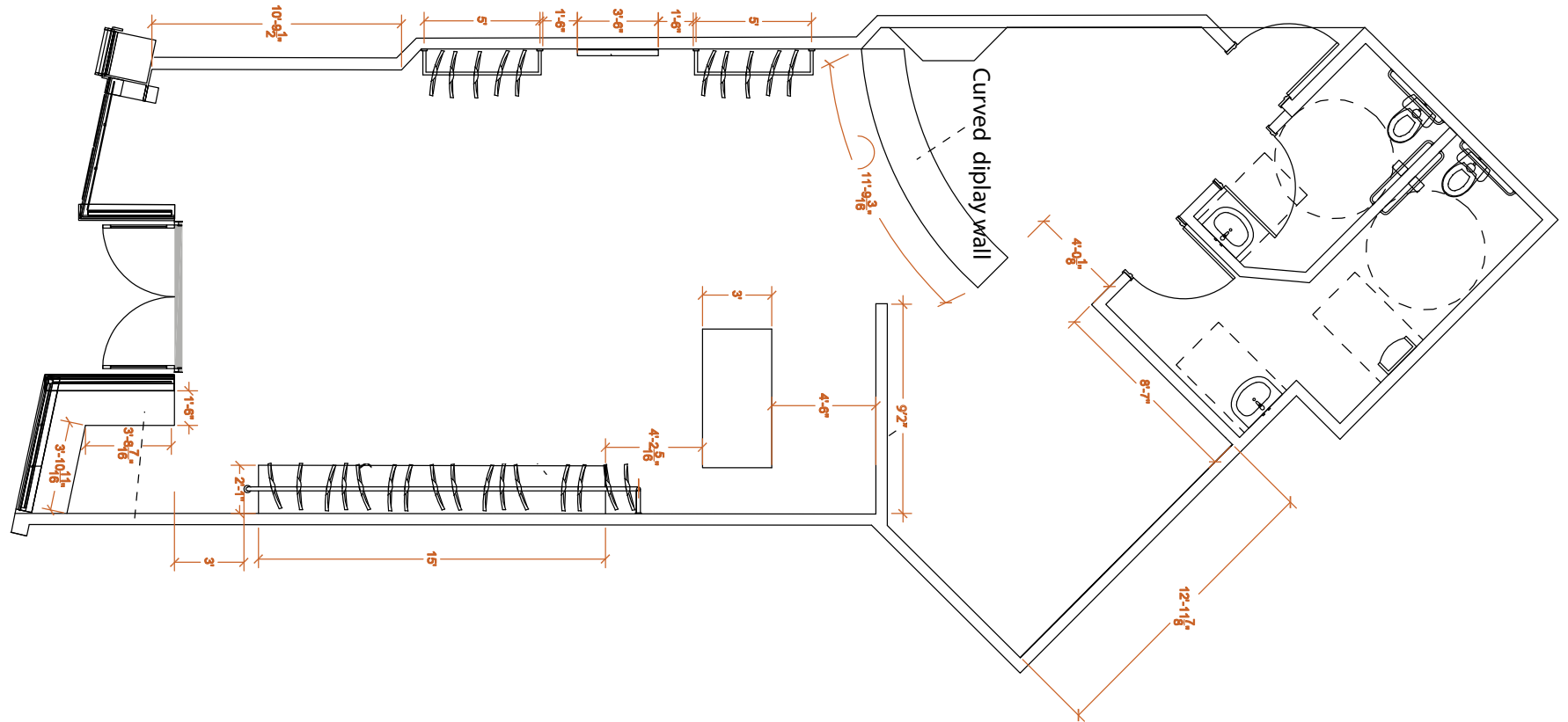
NEWMARK
PACIFIC

BRIAN ABDI

Director
T 310-275-9222
ba@bridgerealestate.com
CA RE Lic. #01879399

BR
BRIDGE
REAL ESTATE

TRACTION AVENUE



3RD +

TRACTION

JAY LUCHS

Executive Vice Chairman
T 310-407-6585
jay.luchs@nrmk.com
CA RE Lic. #01260345
JAYLUCHS.COM

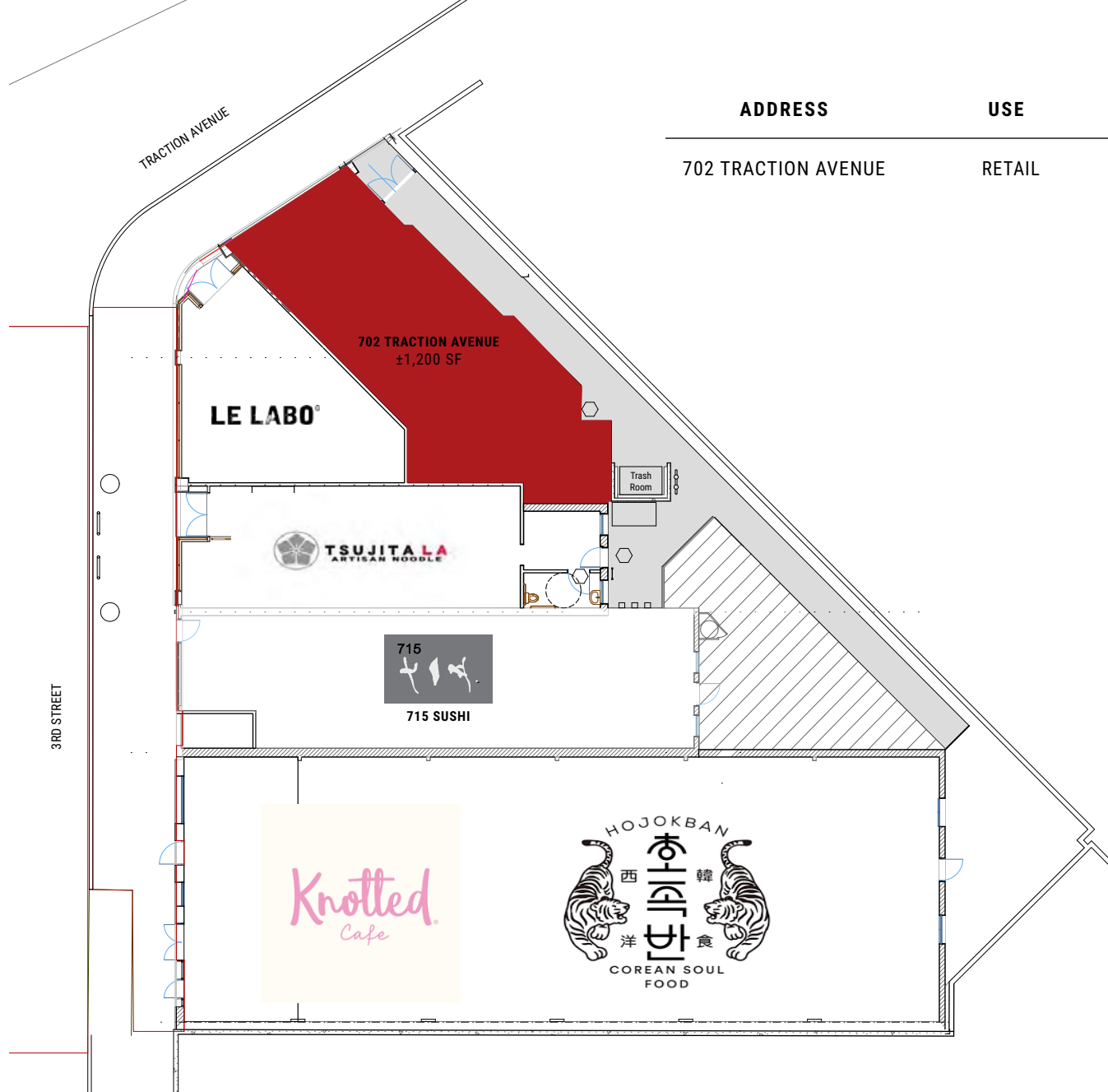
NEWMARK
PACIFIC

BRIAN ABDI

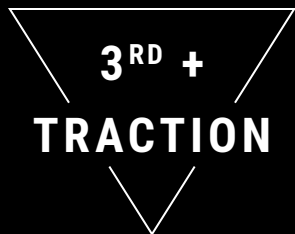
Director
T 310-275-9222
ba@bridgerealestate.com
CA RE Lic. #01879399

BR
BRIDGE
REAL ESTATE

SITE PLAN



ADDRESS	USE	SIZE
702 TRACTION AVENUE	RETAIL	±1,200 SF*



JAY LUCHS
 Executive Vice Chairman
 T 310-407-6585
 jay.luchs@nmrk.com
 CA RE Lic. #01260345
 JAYLUCHS.COM

NEWMARK
 PACIFIC

BRIAN ABDI
 Director
 T 310-275-9222
 ba@bridgerealestate.com
 CA RE Lic. #01879399

BRIDGE
 REAL ESTATE



LE LABO®

GRASSE — NEW YORK

Le Labo is a luxury fragrance brand known for slow perfumery and made-to-order blends in minimalist, lab-style boutiques. Hand-blended, labeled-on-site scents—along with city exclusives and curated home/body lines—drive gifting, repeat visits, and destination traffic among design-conscious, affluent shoppers.

TSUJITA

ARTISAN NOODLE

Founded in Tokyo in 2003, Tsujita has grown to 18 locations in Japan and entered the U.S. in 2011. Celebrated for rich, slow-simmered broths and tsukemen, the brand's craft-driven preparation, approachable service, and streamlined menu deliver fast turns, consistent quality, and reliable lunch-to-dinner traffic fueled by signature items, seasonal specials, and strong word of mouth.



715 Sushi, led by Osaka-born Chef Seigo Tamura, is a one-Michelin-starred, eight-seat counter blending tradition and innovation—often with more cooked courses than expected. Seafood is sourced exclusively from Japan (with tuna aged in-house), nigiri rice is firm with a subtle Osaka-style sweetness.

Knotted

Cafe Knotted, founded in Seoul in 2017, is famed for hand-crafted cream-filled donuts, fresh milk cream, and playful design. Now with 40+ locations in Korea, it has opened in Los Angeles at Westfield Century City, with an Arts District site coming soon. The menu spans fresh cream donuts, premium coffee, matcha, cookies, and cakes, brewed with Stereoscope beans and Nekohama ceremonial-grade matcha.



Hojokban delivers a modern Korean dining experience built around shareable plates, bold flavors, and convivial atmospherics suited to groups and social occasions. A curated beverage program featuring soju-inspired cocktails and craft beer extends dwell time and boosts evening performance. The blend of comfort and contemporary dishes attracts both food-savvy diners and mainstream audiences, encouraging discovery and repeat visits.

3RD +

TRACTION

JAY LUCHS

Executive Vice Chairman
T 310-407-6585
jay.luchs@nrmk.com
CA RE Lic. #01260345
JAYLUCHS.COM

NEWMARK
PACIFIC

BRIAN ABDI

Director
T 310-275-9222
ba@bridgerealestate.com
CA RE Lic. #01879399

BR
BRIDGE
REAL ESTATE



Across from Wurstküche



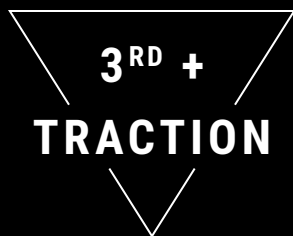
Steps from Hauser & Wirth

At the heart of DTLA's Arts District, **702 Traction Ave** offers a highly walkable mix of converted warehouses, galleries, murals, and creative offices, with daily conveniences nearby and easy access to Little Tokyo, ROW DTLA, the A/E Line at Little Tokyo Station, and major freeways.

Dining is a standout—top destinations like **Bestia, Bavel, Damian, Camphor, Kato,** and **Yangban** sit alongside casual staples such as **Wurstküche, Everson Royce Bar,** and **Arts District Brewing**; patios are common, reservations are smart, and parking is a mix of street, lots, and garages (with rideshare popular at night).



Steps to Salt & Straw



JAY LUCHS
Executive Vice Chairman
T 310-407-6585
jay.luchs@nrmk.com
CA RE Lic. #01260345
JAYLUCHS.COM

NEWMARK
PACIFIC

BRIAN ABDI
Director
T 310-275-9222
ba@bridgerealestate.com
CA RE Lic. #01879399

BR
BRIDGE
REAL ESTATE

NEARBY



Traffic Count: Costar, TrafficMetrix 2025

3RD +

TRACTION

The information contained herein has been obtained from sources deemed reliable but has not been verified and no guarantee, warranty or representation, either express or implied, is made with respect to such information. Terms of sale or lease and availability are subject to change or withdrawal without notice.

CORPORATE RE LICENSE #01796698

JAY LUCHS

Executive Vice Chairman
T 310-407-6585
jay.luchs@nmrk.com
CA RE Lic. #01260345
JAYLUCHS.COM

BRIAN ABDI

Director
T 310-275-9222
ba@bridgerealestate.com
CA RE Lic. #01879399

NEWMARK
PACIFIC

BRIDGE
REAL ESTATE