

7141 SANTA MONICA BOULEVARD

DOMAIN
WEST HOLLYWOOD



JAY LUCHS
CARLY GELLER

Vice Chairman
Director - Jay Luchs Group

310-407-6585
310-593-0760

jay.luchs@nrmk.com
carly.geller@nrmk.com

CA RE Lic. #01260345
CA RE Lic. #02153582

JAYLUCHS.COM
NEWMARK



ADDRESS

7141 Santa Monica Boulevard
West Hollywood, CA 90046

RENT

\$5.50 PSF per month NNN

USE

Retail

NNN

±\$1.39 PSF per month

SIZE

±5,030 SF (Can be demised
to ±2,407 SF)

PARKING

Garage parking (42 total
spaces for retail)



**AVAILABLE
SPACE**

JAY LUCHS
CARLY GELLER

Vice Chairman
Director - Jay Luchs Group

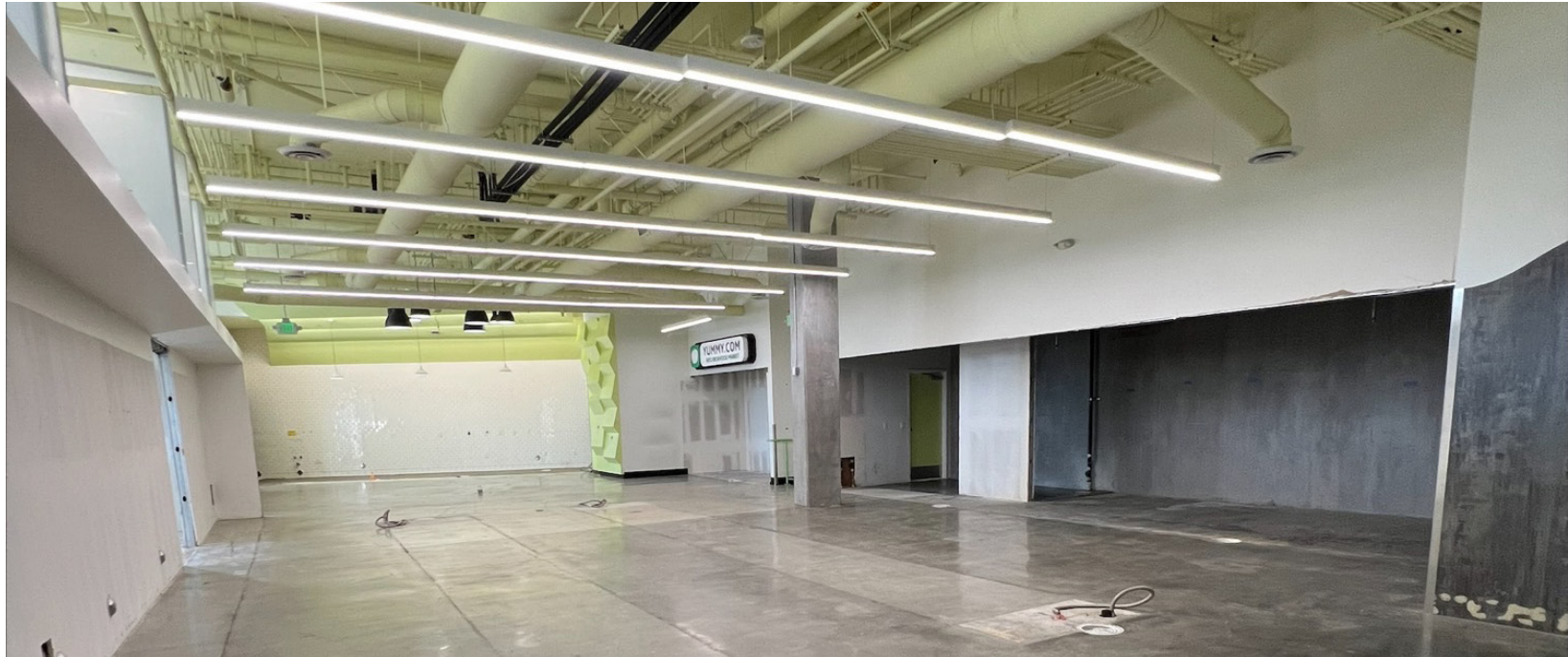
310-407-6585
310-593-0760

jay.luchs@nrmk.com
carly.geller@nrmk.com

CA RE Lic. #01260345
CA RE Lic. #02153582

JAYLUCHS.COM
NEWMARK

INTERIOR PHOTOS



JAY LUCHS
CARLY GELLER

Vice Chairman
Director - Jay Luchs Group

310-407-6585
310-593-0760

jay.luchs@nrmk.com
carly.geller@nrmk.com

CA RE Lic. #01260345
CA RE Lic. #02153582

JAYLUCHS.COM
NEWMARK

SITE PLAN

FORMOSA AVENUE



DETROIT STREET

SANTA MONICA BOULEVARD

JAY LUCHS
CARLY GELLER

Vice Chairman
Director - Jay Luchs Group

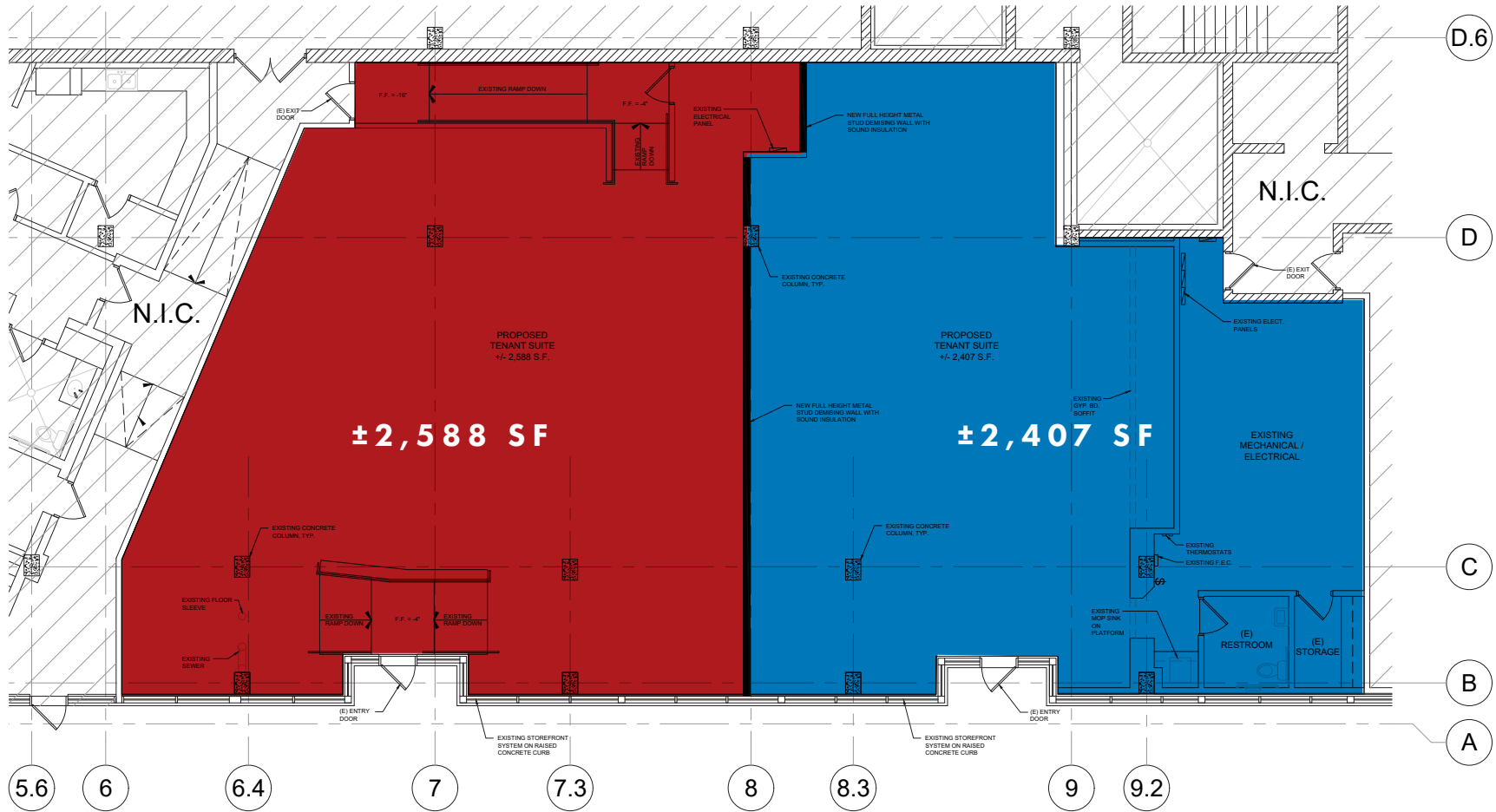
310-407-6585
310-593-0760

jay.luchs@nrmk.com
carly.geller@nrmk.com

CA RE Lic. #01260345
CA RE Lic. #02153582

JAYLUCHS.COM
NEWMARK

PROPOSED DEMISING PLAN



SANTA MONICA BOULEVARD

JAY LUCHS
CARLY GELLER

Vice Chairman
Director - Jay Luchs Group

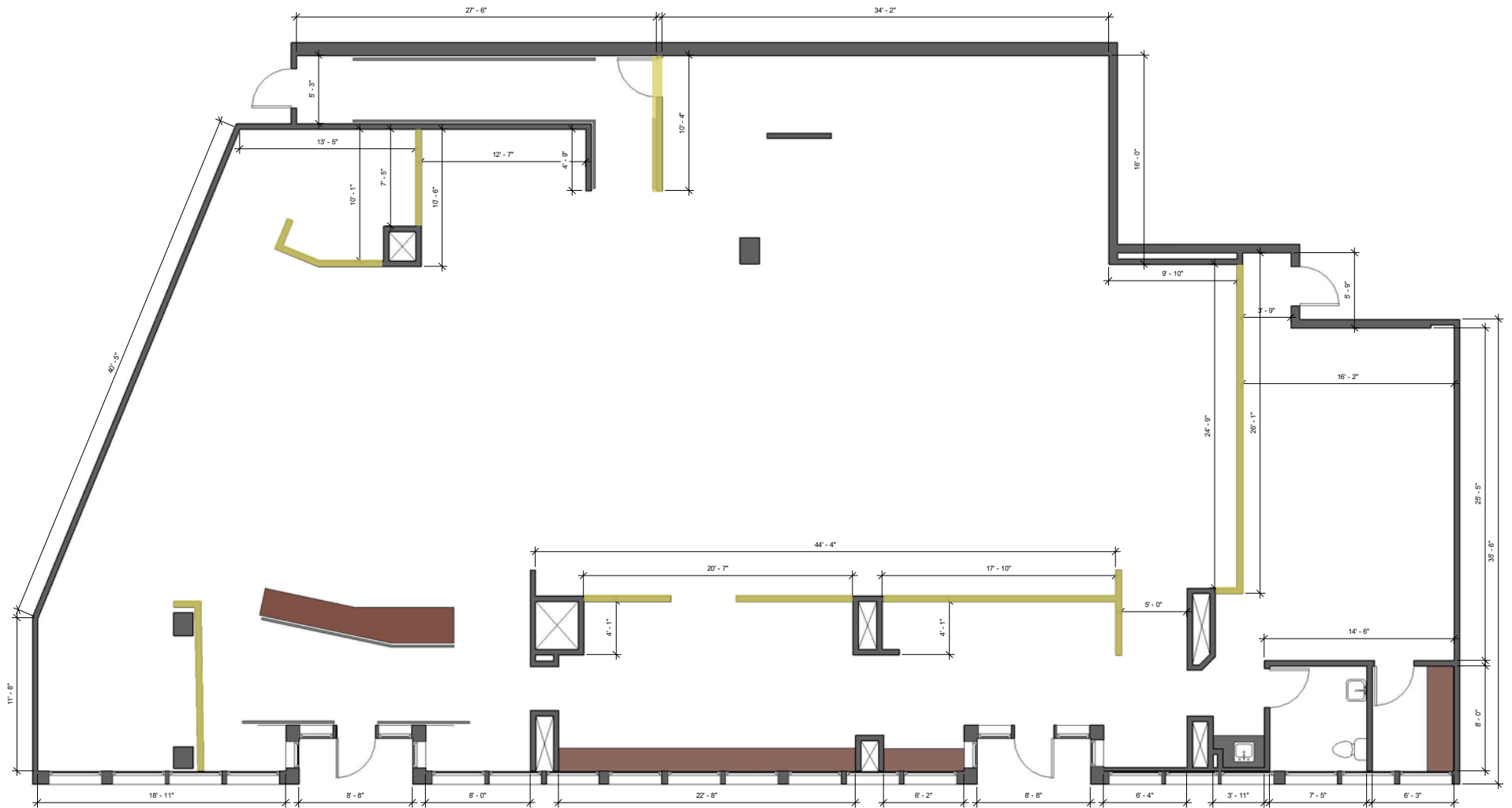
310-407-6585
310-593-0760

jay.luchs@nrmk.com
carly.geller@nrmk.com

CA RE Lic. #01260345
CA RE Lic. #02153582

JAYLUCHS.COM
NEWMARK

FLOOR PLAN



SANTA MONICA BOULEVARD

— Non-structural walls

JAY LUCHS
CARLY GELLER

Vice Chairman
Director - Jay Luchs Group

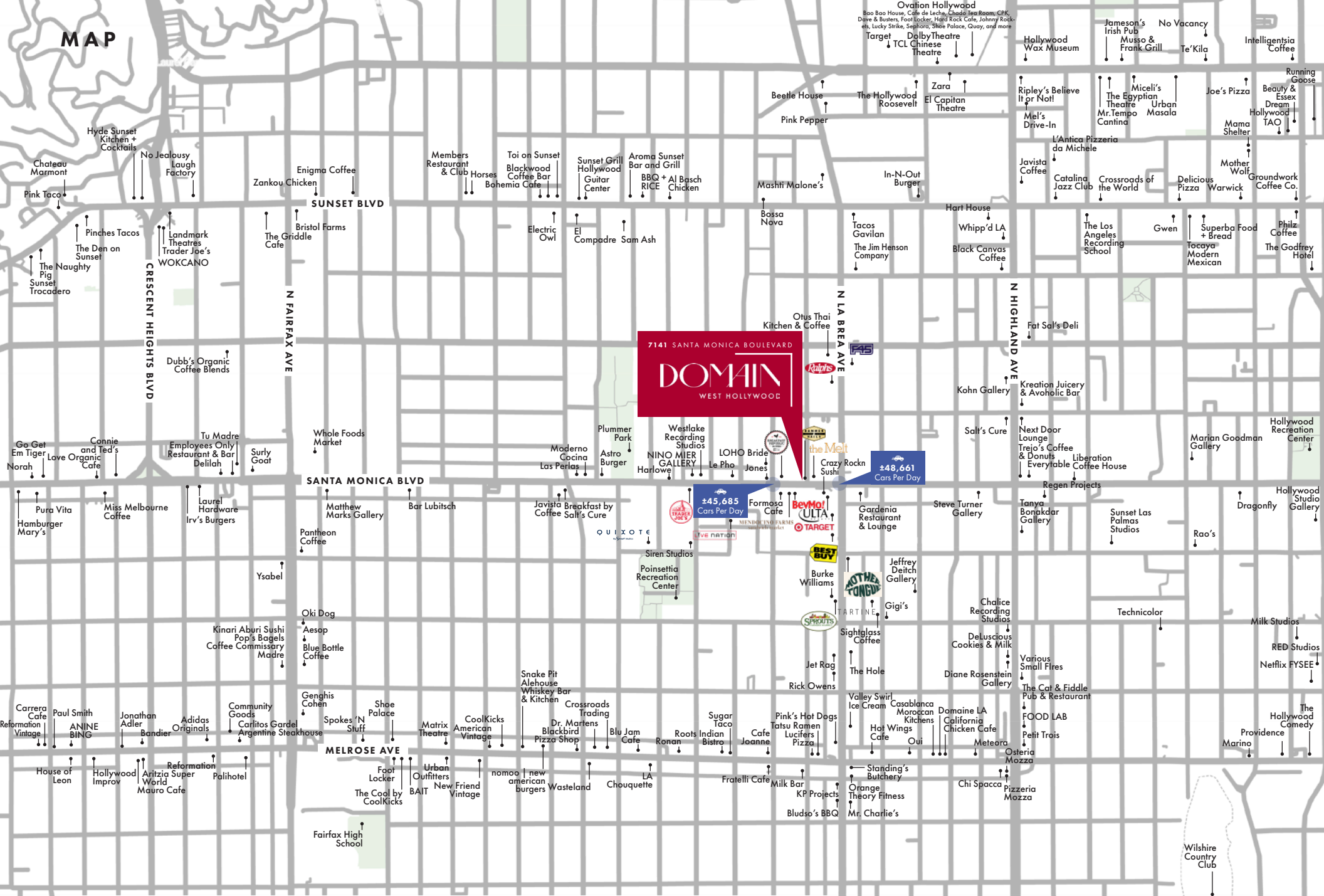
310-407-6585
310-593-0760

jay.luchs@nrmk.com
carly.geller@nrmk.com

CA RE Lic. #01260345
CA RE Lic. #02153582

JAYLUCHS.COM
NEWMARK

MAP



The information contained herein has been obtained from sources deemed reliable but has not been verified and no guarantee, warranty or representation, either express or implied, is made with respect to such information. Terms of sale or lease and availability are subject to change or withdrawal without notice.

Corporate License #01355491

JAY LUCHS
CARLY GELLER

Vice Chairman
Director - Jay Luchs Group

310-407-6585
310-593-0760

jay.luchs@nrmk.com
carly.geller@nrmk.com

CA RE Lic. #01260345
CA RE Lic. #02153582

JAYLUCHS.COM
NEWMARK