

7950 W. SUNSET BOULEVARD

LOS ANGELES, CA 90046



JAY LUCHS
CARLY GELLER

Vice Chairman 310-407-6585
Director-Jay Luchs Group 310-593-0760

jay.luchs@nrmk.com
carly.geller@nrmk.com

CA RE Lic. #01260345
CA RE Lic. #02153582

JAYLUCHS.COM
NEWMARK



ADDRESS

7950 W. Sunset Boulevard
Los Angeles, CA 90046



USE

Retail



SIZE

Suite A: ±3,459 SF
Suite B: ±2,648 SF
Suite C: ±3,094 SF
Suite D: ±1,846 SF
Total: ±11,047 SF
(Divisible)



RENT

\$5.50 PSF per month NNN



PARKING

Garage with 136 parking spaces

JAY LUCHS
CARLY GELLER

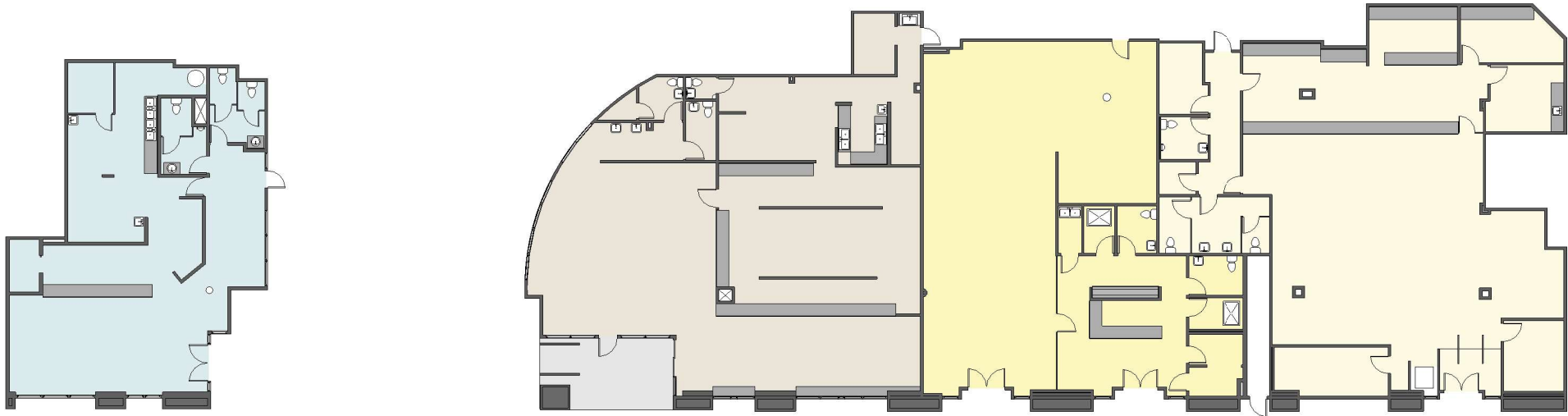
Vice Chairman 310-407-6585
Director-Jay Luchs Group 310-593-0760

jay.luchs@nrmk.com
carly.geller@nrmk.com

CA RE Lic. #01260345
CA RE Lic. #02153582

JAYLUCHS.COM
NEWMARK

TOTAL AVAILABLE
±11,047 SF



SUITE D
±1,846 SF

SUITE C
±3,094 SF

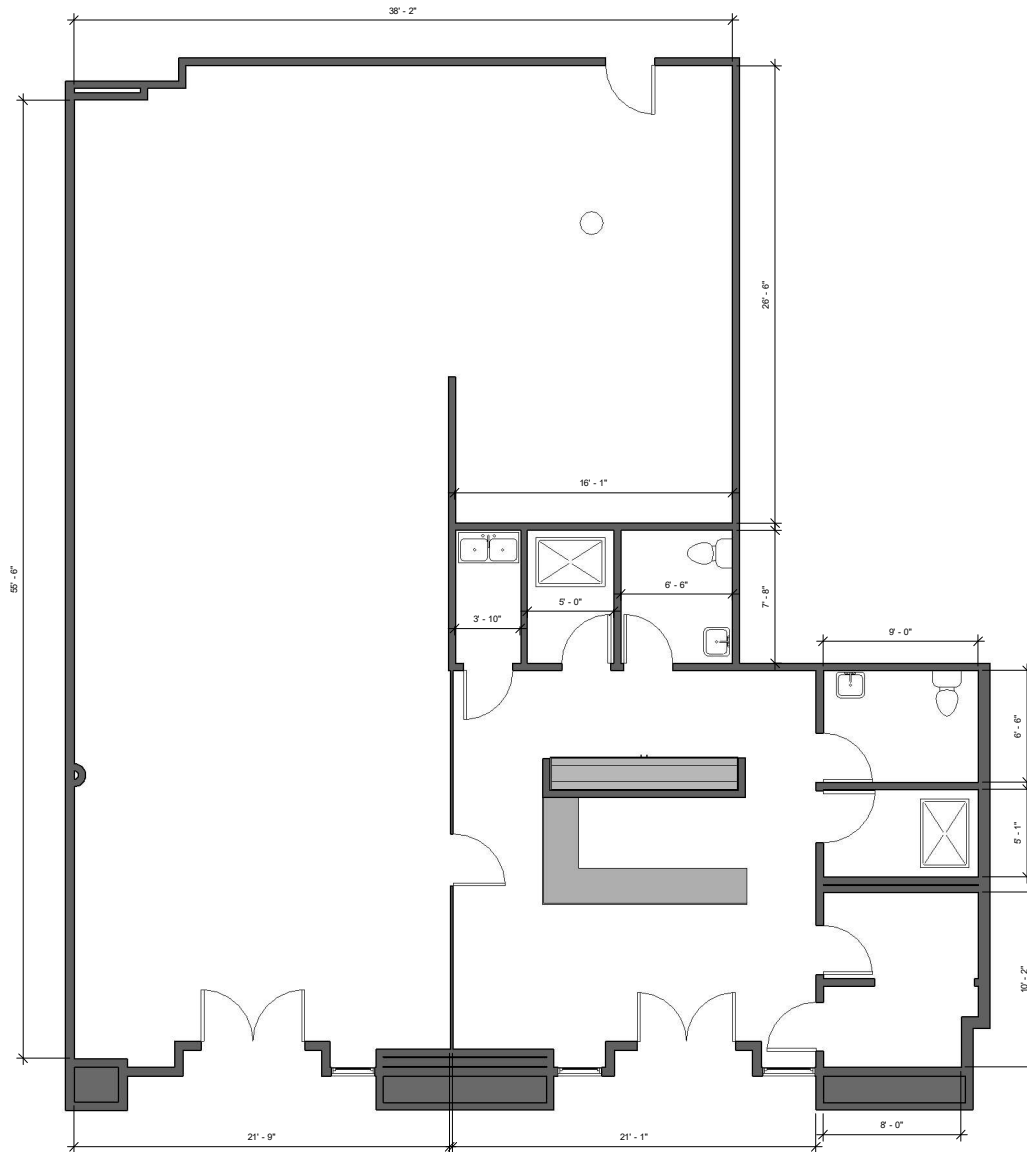
SUITE B
±2,648 SF

SUITE A
±3,459 SF

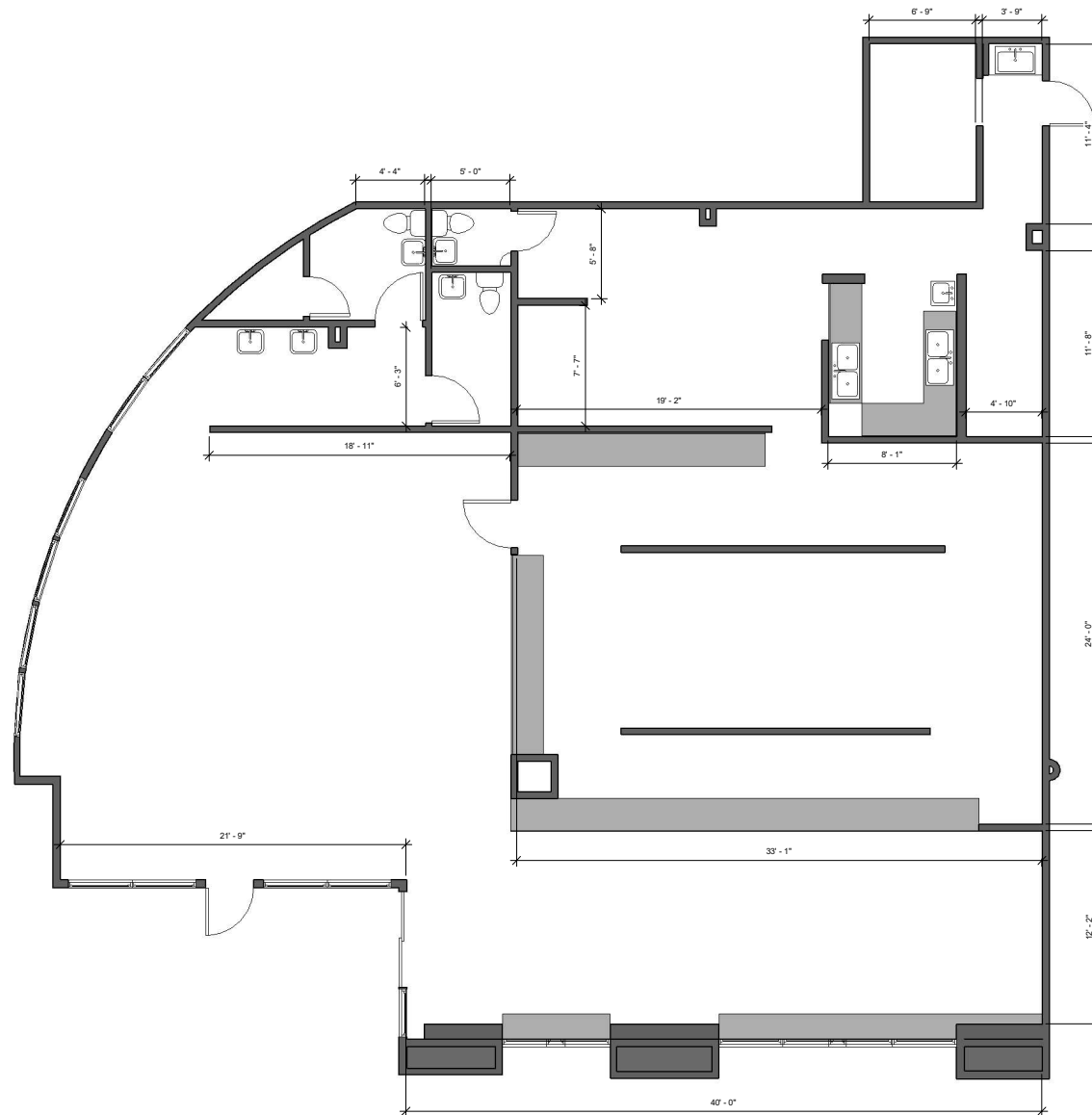
SUITE A
±3,459 SF



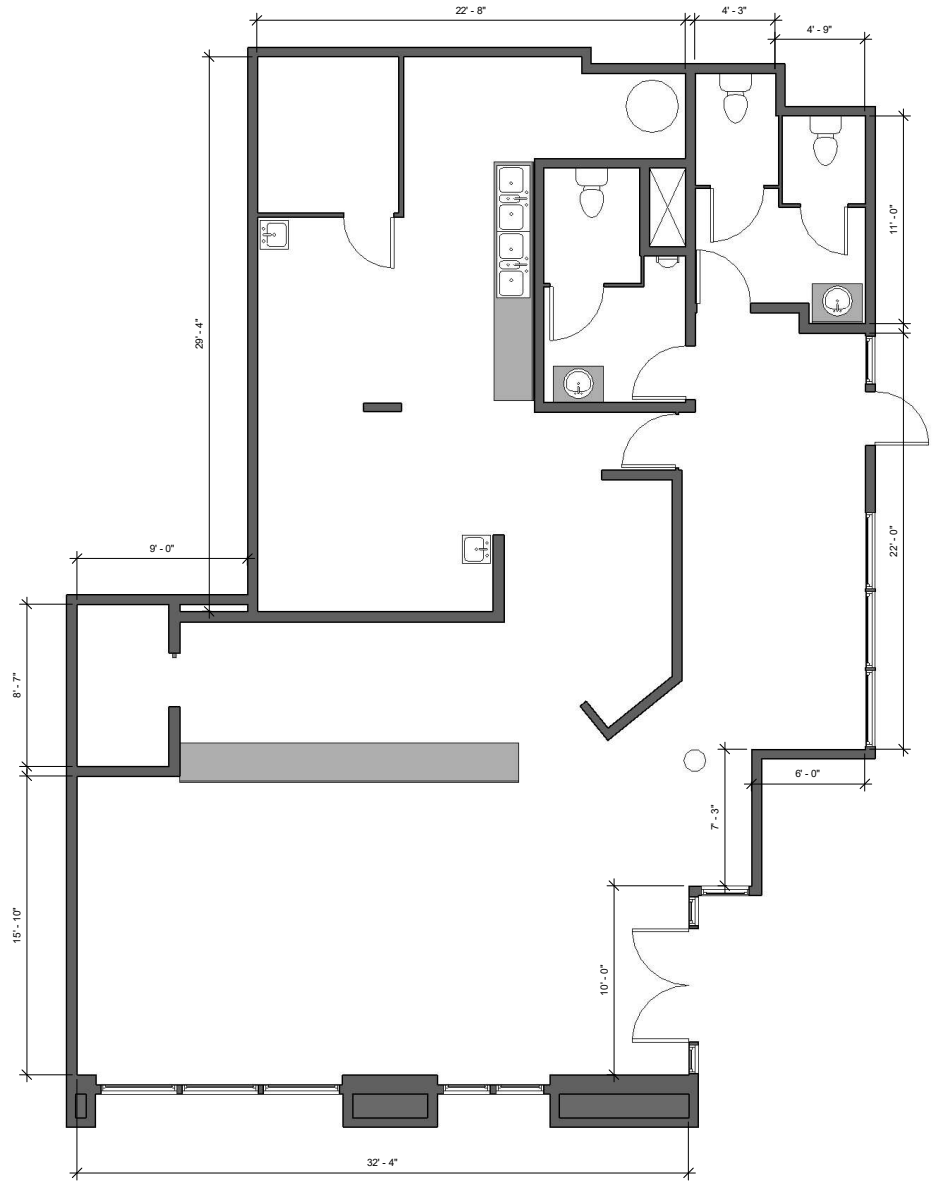
SUITE B
±2,648 SF



SUITE C
±3,094 SF



SUITE D
±1,846 SF





7950 W. SUNSET BOULEVARD
LOS ANGELES, CA 90016

±55,000
CARS PER DAY

±38,185
CARS PER DAY

The information contained herein has been obtained from sources deemed reliable but has not been verified and no guarantee, warranty or representation, either express or implied, is made with respect to such information. Terms of sale or lease and availability are subject to change or withdrawal without notice. Corporate RE Lic. #01355491

JAY LUCHS
CARLY GELLER

Vice Chairman 310-407-6585
Director-Jay Luchs Group 310-593-0760

jay.luchs@nrmk.com
carly.geller@nrmk.com

CA RE Lic. #01260345
CA RE Lic. #02153582

JAYLUCHS.COM
NEWMARK