

7990-7992

SANTA MONICA
BOULEVARD



JAY LUCHS
JAMES NUGENT
NEWMARK

Vice Chairman
Associate
JAYLUCHS.COM

310-407-6585
310-407-6584

jay.luchs@nrmk.com
james.nugent@nrmk.com

CA RE Lic. #01260345
CA RE Lic. #02218437

jayluchs.com
For Lease
310 407 6585
Jay Luchs
Los Angeles



ADDRESS

7990-7992 Santa Monica Boulevard
West Hollywood, CA 90046

USE

Retail

SIZE

7990 Santa Monica Boulevard
±500 SF - ±800 SF Available

7992 Santa Monica Boulevard
±568 SF Available

RENT

\$5.25 PSF per month NNN

NNN

Approximately \$1 PSF per month

JAY LUCHS
JAMES NUGENT
NEWMARK

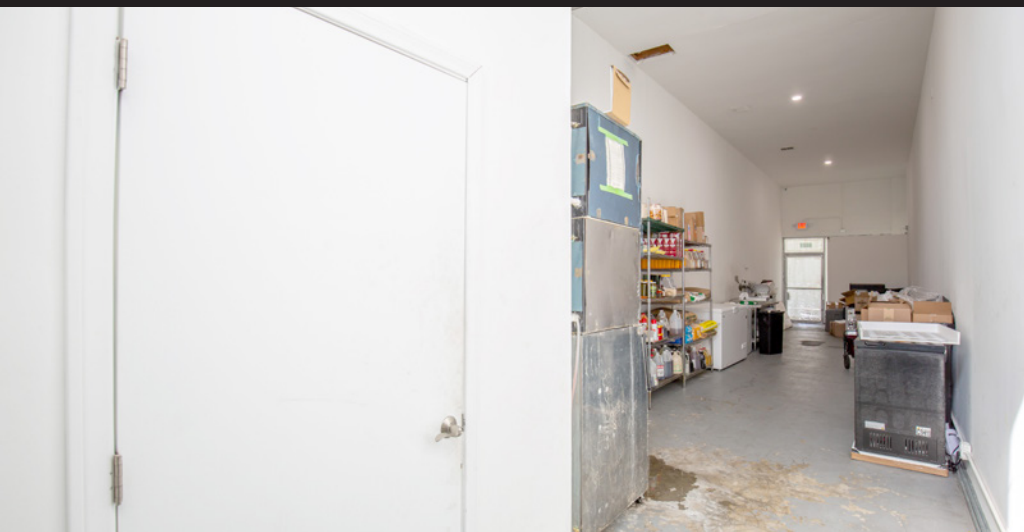
Vice Chairman
Associate
JAYLUCHS.COM

310-407-6585
310-407-6584

jay.luchs@nmrk.com
james.nugent@nmrk.com

CA RE Lic. #01260345
CA RE Lic. #02218437

jayluchs.com
For Lease
310 407 6585
Jay Luchs
Los Angeles



7990 Santa Monica Boulevard
±500 SF - ±800 SF Available

JAY LUCHS
JAMES NUGENT
NEWMARK

Vice Chairman
Associate
JAYLUCHS.COM

310-407-6585
310-407-6584

jay.luchs@nrmk.com
james.nugent@nrmk.com

CA RE Lic. #01260345
CA RE Lic. #02218437

jayluchs.com
For Lease
310 407 6585
Jay Luchs
Los Angeles



7992 Santa Monica Boulevard
±568 SF Available

JAY LUCHS
JAMES NUGENT
NEWMARK

Vice Chairman
Associate
JAYLUCHS.COM

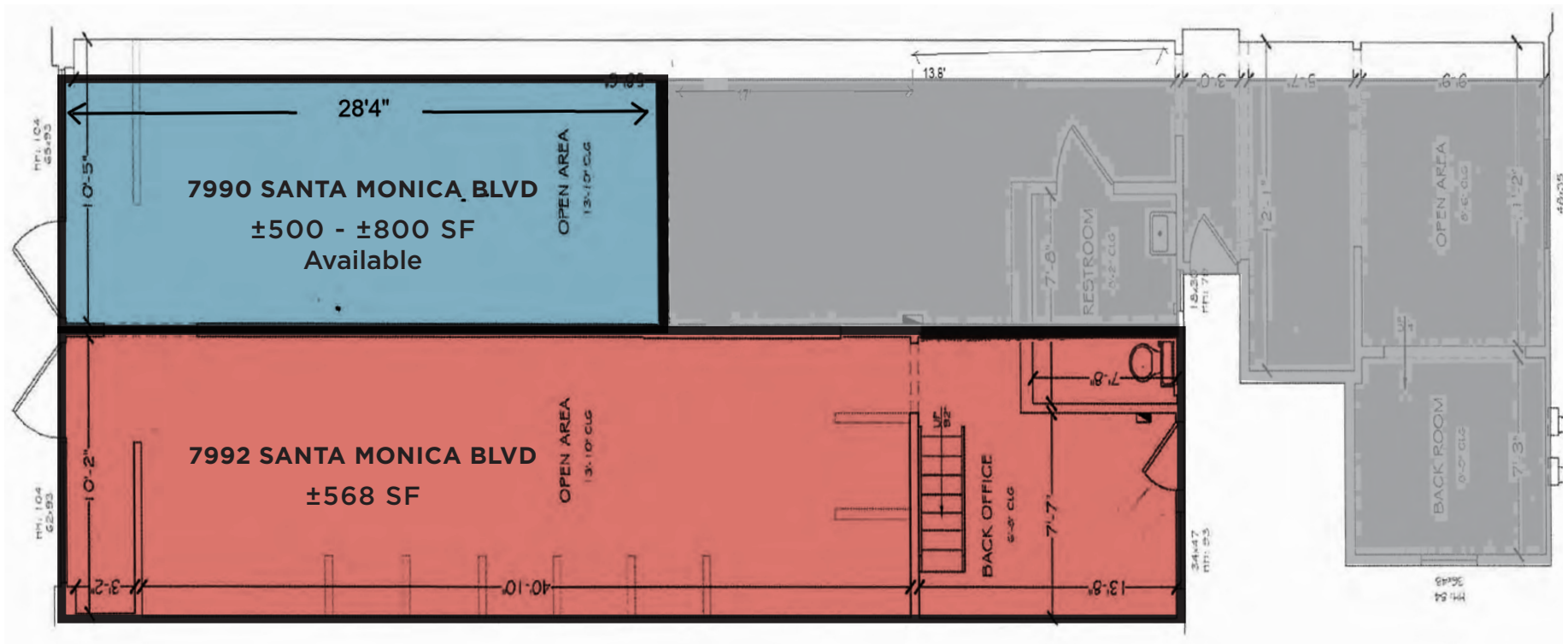
310-407-6585
310-407-6584

jay.luchs@nrmk.com
james.nugent@nrmk.com

CA RE Lic. #01260345
CA RE Lic. #02218437

jayluchs.com
For Lease
310 407 6585
Jay Luchs
Los Angeles

SANTA MONICA BOULEVARD



JAY LUCHS
JAMES NUGENT
NEWMARK

Vice Chairman
Associate
JAYLUCHS.COM

310-407-6585
310-407-6584

jay.luchs@nmrk.com
james.nugent@nmrk.com

CA RE Lic. #01260345
CA RE Lic. #02218437

jayluchs.com
For Lease
310 407 6585
Jay Luchs
Los Angeles

NEIGHBORING TENANTS



1



7984 Santa Monica Blvd

Formerly a hardware store, Laurel Hardware is a neighborhood staple emphasizing New American cuisine with the help of local farmers for a memorable farm-to-table experience.

3



7998 Santa Monica Blvd

Established in 1946 and a historic staple of Route 66, Irv's is considered an institution and one of the original roadside burger stands in Los Angeles. The burger stand continues to serve delicious food and warm vibes in the community, luring the likes of celebs and locals.

5



7953 Santa Monica Blvd

Employees Only Bar is a contemporary speakeasy making it's way from NYC serving moody cocktails filled with-house-made syrups, hand-squeezed juices, freshly-puréeed seasonal fruits and rare liquors.

7



7929 Santa Monica Blvd

The Surly Goat serves an amazing selection of classic and rotating local craft beers since opening in 2010. Offering guests plentiful seating, a 'lounge' area near the bar, two outdoor patios, darts, arcade games, trivia, karaoke, and DJs.

2



7998 Santa Monica Blvd

Ggiata serves authentic Italian-Style deli food that draws inspiration from the traditional East Coast neighborhood delis.

4



7969 Santa Monica Blvd

Delilah brings a modern approach to the vibes of the roaring '20s with American cuisine and Art Deco characteristics. Eating, drinking, and dancing converge in this luxury space as guests enjoy lounge style bottle service as the evening unfolds.

6



1111 Hayworth Ave

Tu Madre is known for reinventing the taco game in LA. Showcasing daring flavors as diverse as LA itself, where ahi tuna meets tortillas, and margaritas come in dazzling flights.

8



8171 Santa Monica Blvd

Connie and Ted's offers New England seafood classics & raw-bar options in sleek wood-accented quarters with an open kitchen.

JAY LUCHS
JAMES NUGENT
NEWMARK

Vice Chairman
Associate
JAYLUCHS.COM

310-407-6585
310-407-6584

jay.luchs@nrmk.com
james.nugent@nrmk.com

CA RE Lic. #01260345
CA RE Lic. #02218437

For Lease
310 407 6585
Jay Luchs
Los Angeles

HOLLYWOOD


DOWNTOWN
LA



TU MADRE

Employees
Only Bar




±45,554
Cars Per Day

PANTHEON

ysabel

LAUREL PET HOSPITAL

bijou

CANDLE

Laurel HARDWARE

7990-7992

SANTA MONICA
BOULEVARD

LAUREL AVE

SANTA MONICA BOULEVARD



Gjatala

ORCHARD
NOT A LAB.

TRY'S
BURGERS
SINCE 1946

Traffic Count: Costar, TrafficMetrix 2022

JAY LUCHS
JAMES NUGENT
NEWMARK

Vice Chairman
Associate
JAYLUCHS.COM

310-407-6585
310-407-6584

jay.luchs@nrmk.com
james.nugent@nrmk.com

CA RE Lic. #01260345
CA RE Lic. #02218437

jayluchs.com
For Lease
310 407 6585
Jay Luchs
Los Angeles



The information contained herein has been obtained from sources deemed reliable but has not been verified and no guarantee, warranty or representation, either express or implied, is made with respect to such information. Terms of sale or lease and availability are subject to change or withdrawal without notice.

Corporate RE Lic #01355491

JAY LUCHS
JAMES NUGENT
NEWMARK

Vice Chairman
Associate
JAYLUCHS.COM

310-407-6585
310-407-6584

jay.luchs@nrmk.com
james.nugent@nrmk.com

CA RE Lic. #01260345
CA RE Lic. #02218437

jayluchs.com
For Lease
310 407 6585
Jay Luchs
Los Angeles