



8526 WASHINGTON BOULEVARD
CULVER CITY CALIFORNIA

jayluchs.com
For Lease
310 407 6585
Jay Luchs
Los Angeles

NEWMARK

**INDU
STRY**

JAY LUCHS
Vice Chairman
T 310-407-6585
jay.luchs@nmrk.com
CA RE Lic. #01260345
JAYLUCHS.COM

SCOTT RIGSBY
Partner
T 310-395-5151
sr@industrypartners.com
CA RE Lic. #01252835

RICH MALOOF
Partner
T 818-438-7998
rm@industrypartners.com
CA RE Lic. #02009527



ADDRESS

8526 Washington Boulevard
Culver City, CA 90232

USE

Retail/Creative Office

SIZE

±1,759 SF

RENT

Available upon Request

HIGHLIGHTS

- Three on-site parking spaces available in rear (\$200/space/month)
- Open floorplan
- Skylights and ample lighting throughout
- Private patio area
- Concrete floors
- Modern kitchen area
- Restroom

jayluchs.com
For Lease
310 407 6585
Jay Luchs
Los Angeles

NEWMARK

**INDU
STRY**

JAY LUCHS

Vice Chairman
T 310-407-6585
jay.luchs@nmrk.com
CA RE Lic. #01260345
JAYLUCHS.COM

SCOTT RIGSBY

Partner
T 310-395-5151
sr@industrypartners.com
CA RE Lic. #01252835

RICH MALOOF

Partner
T 818-438-7998
rm@industrypartners.com
CA RE Lic. #02009527



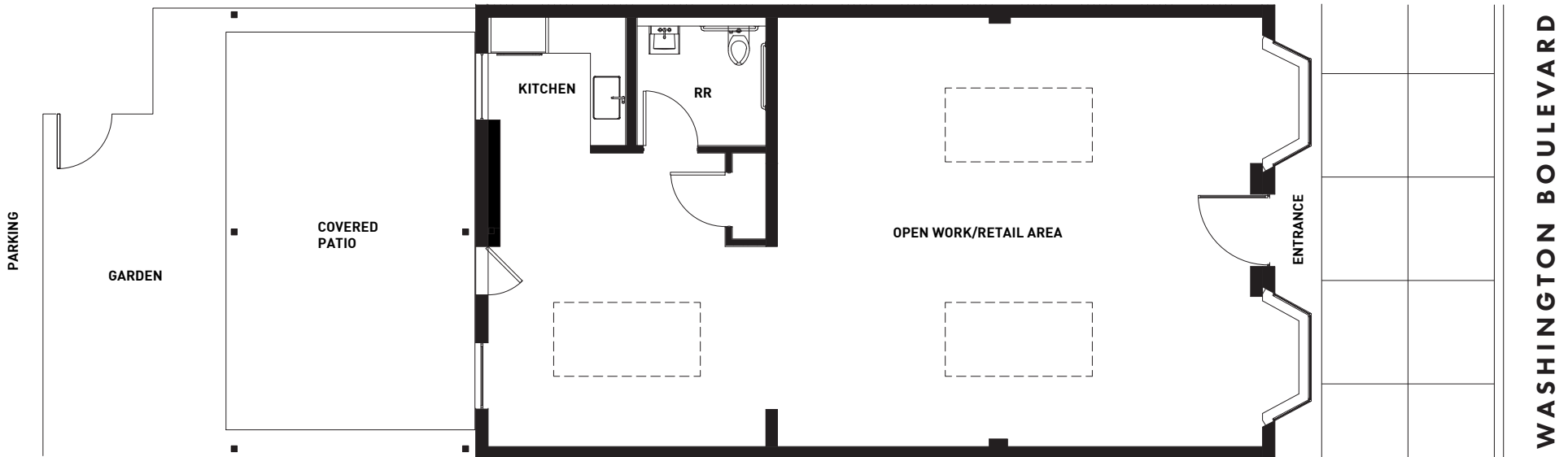
jayluchs.com
For Lease
310 407 6585
Jay Luchs
Los Angeles

NEWMARK **INDU**
STRY

JAY LUCHS
Vice Chairman
T 310-407-6585
jay.luchs@nmrk.com
CA RE Lic. #01260345
JAYLUCHS.COM

SCOTT RIGSBY
Partner
T 310-395-5151
sr@industrypartners.com
CA RE Lic. #01252835

RICH MALOOF
Partner
T 818-438-7998
rm@industrypartners.com
CA RE Lic. #02009527



WASHINGTON BOULEVARD

jayluchs.com
For Lease
310 407 6585
Jay Luchs
 Los Angeles

NEWMARK

**INDU
 STRY**

JAY LUCHS
 Vice Chairman
 T 310-407-6585
 jay.luchs@nmrk.com
 CA RE Lic. #01260345
JAYLUCHS.COM

SCOTT RIGSBY
 Partner
 T 310-395-5151
 sr@industrypartners.com
 CA RE Lic. #01252835

RICH MALOOF
 Partner
 T 818-438-7998
 rm@industrypartners.com
 CA RE Lic. #02009527

