

8 5 5 0 - 8 5 9 4  
SANTA MONICA  
BOULEVARD  
WEST HOLLYWOOD, CA 90069



**JAY LUCHS**  
**CARLY GELLER**  
**NEWMARK**  
PACIFIC

Vice Chairman  
Director-Jay Luchs Group  
**JAYLUCHS.COM**

310-407-6585  
310-593-0760

[jay.luchs@nrmk.com](mailto:jay.luchs@nrmk.com)  
[carly.geller@nrmk.com](mailto:carly.geller@nrmk.com)

CA RE Lic. #01260345  
CA RE Lic. #02153582

jayluchs.com  
**For Lease**  
**310 407 6585**  
**Jay Luchs**  
Los Angeles

# AVAILABLE SPACES



**8550**  
Retail  
±2,394 SF

Future  
**EREWHON**

**8582**  
Retail  
±743 SF

**8594**  
Retail  
±867 SF

**JAY LUCHS**  
**CARLY GELLER**  
**NEWMARK**  
PACIFIC

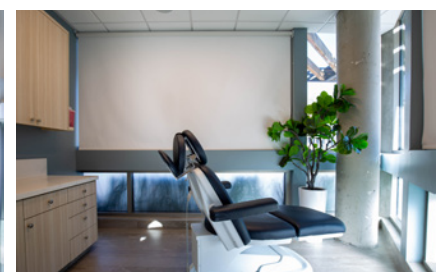
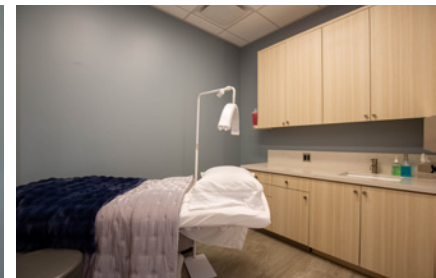
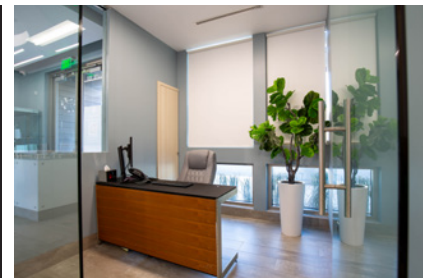
Vice Chairman  
Director-Jay Luchs Group  
**JAYLUCHS.COM**

310-407-6585  
310-593-0760

jay.luchs@nrmk.com  
carly.geller@nrmk.com

CA RE Lic. #01260345  
CA RE Lic. #02153582

jayluchs.com  
**For Lease**  
**310 407 6585**  
**Jay Luchs**  
Los Angeles



**ADDRESS**

8550 Santa Monica Boulevard  
West Hollywood, CA 90069

**USE**

Retail

**SIZE**

±2,394 SF

**RENT**

Available upon Request

**AVAILABLE**

Immediately

**JAY LUCHS**  
**CARLY GELLER**  
**NEWMARK**  
PACIFIC

Vice Chairman  
Director-Jay Luchs Group  
**JAYLUCHS.COM**

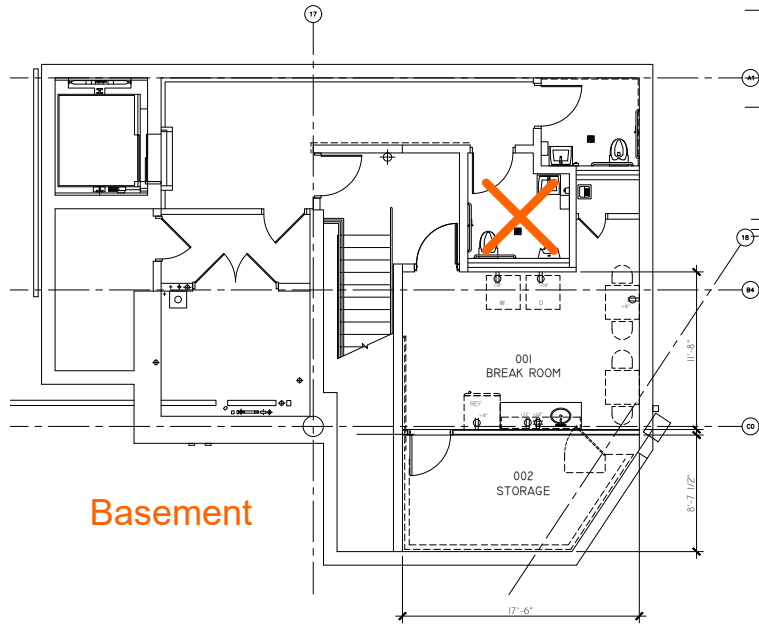
310-407-6585  
310-593-0760

jay.luchs@nrmk.com  
carly.geller@nrmk.com

CA RE Lic. #01260345  
CA RE Lic. #02153582

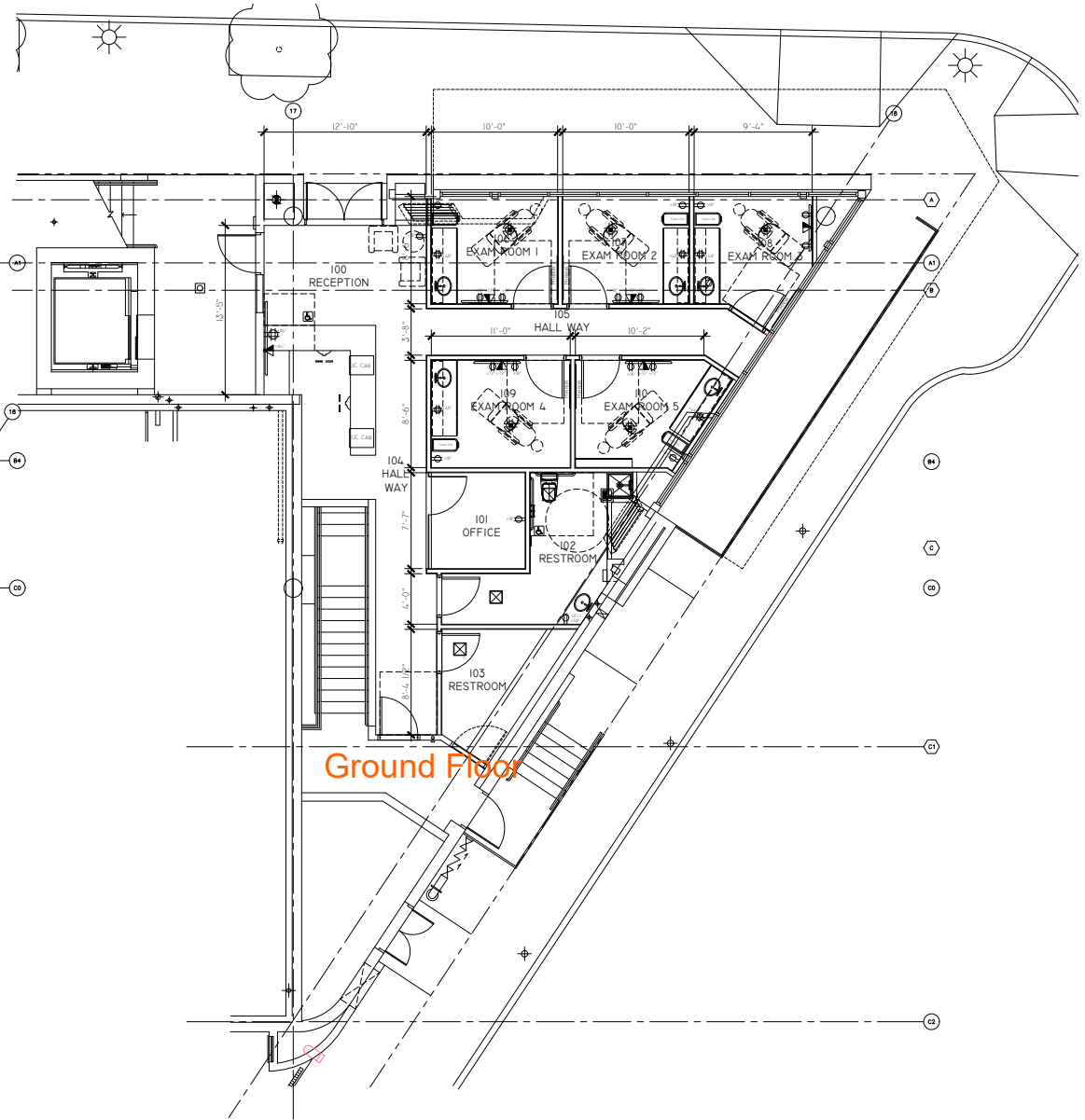
jayluchs.com  
**For Lease**  
**310 407 6585**  
**Jay Luchs**  
Los Angeles

**8550 SANTA MONICA BLVD  
FLOOR PLAN**



**Basement**

PROPOSED PLAN-BASEMENT  
SCALE: 1/4" = 1'-0"



**Ground Floor**

PROPOSED PLAN-FIRST FLOOR  
SCALE: 1/4" = 1'-0"

**JAY LUCHS**  
**CARLY GELLER**  
**NEWMARK**  
PACIFIC

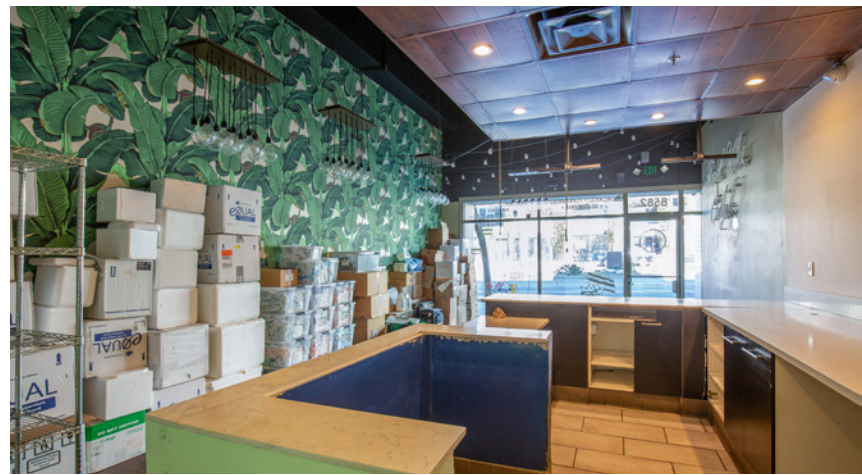
Vice Chairman  
Director-Jay Luchs Group  
**JAYLUCHS.COM**

310-407-6585  
310-593-0760

[jay.luchs@nrmk.com](mailto:jay.luchs@nrmk.com)  
[carly.geller@nrmk.com](mailto:carly.geller@nrmk.com)

CA RE Lic. #01260345  
CA RE Lic. #02153582

jayluchs.com  
**For Lease**  
**310 407 6585**  
**Jay Luchs**  
Los Angeles



**ADDRESS**

8582 Santa Monica Boulevard  
West Hollywood, CA 90069

**USE**

Retail/Restaurant

**SIZE**

±743 SF

**RENT**

Available upon Request

**AVAILABLE**

Immediately

**JAY LUCHS**  
**CARLY GELLER**  
**NEWMARK**  
PACIFIC

Vice Chairman  
Director-Jay Luchs Group  
**JAYLUCHS.COM**

310-407-6585  
310-593-0760

jay.luchs@nrmk.com  
carly.geller@nrmk.com

CA RE Lic. #01260345  
CA RE Lic. #02153582

jayluchs.com  
**For Lease**  
**310 407 6585**  
**Jay Luchs**  
Los Angeles



### ADDRESS

8594 Santa Monica Boulevard  
West Hollywood, CA 90069

### USE

Retail/Restaurant

### SIZE

±867 SF

### RENT

Available upon Request

### AVAILABLE

Immediately

**JAY LUCHS**  
**CARLY GELLER**  
**NEWMARK**  
PACIFIC

Vice Chairman  
Director-Jay Luchs Group  
**JAYLUCHS.COM**

310-407-6585  
310-593-0760

[jay.luchs@nrmk.com](mailto:jay.luchs@nrmk.com)  
[carly.geller@nrmk.com](mailto:carly.geller@nrmk.com)

CA RE Lic. #01260345  
CA RE Lic. #02153582

jayluchs.com  
**For Lease**  
**310 407 6585**  
**Jay Luchs**  
Los Angeles



## HIGHLIGHTS

- Centrally located in West Hollywood
- On-site parking in multi-level garage
- Frontage on Santa Monica Boulevard
- Signage opportunity
- Expansive frontage and visibility on Santa Monica Boulevard

## NEIGHBORING TENANTS



**JAY LUCHS**  
**CARLY GELLER**  
**NEWMARK**  
 PACIFIC

Vice Chairman  
 Director-Jay Luchs Group  
**JAYLUCHS.COM**

310-407-6585    jay.luchs@nrmk.com  
 310-593    Future    ly.geller@nrmk.com  
**EREWTHON**

CA RE Lic. #01260345  
 CA RE Lic. #02153582

jayluchs.com  
**For Lease**  
**310 407 6585**  
**Jay Luchs**  
 Los Angeles



SHAKE SHACK

±\$5,830  
CPD

Future  
**EREWON**

Traffic Count: Costar, TrafficMetrix2022

**JAY LUCHS**  
**CARLY GELLER**  
**NEWMARK**  
PACIFIC

Vice Chairman  
Director-Jay Luchs Group  
**JAYLUCHS.COM**

310-407-6585  
310-593-0760

jay.luchs@nrmk.com  
carly.geller@nrmk.com

CA RE Lic. #01260345  
CA RE Lic. #02153582

jayluchs.com  
**For Lease**  
**310 407 6585**  
**Jay Luchs**  
Los Angeles





Traffic Count: Costar, TrafficMetrix2022

The information contained herein has been obtained from sources deemed reliable but has not been verified and no guarantee, warranty or representation, either express or implied, is made with respect to such information. Terms of sale or lease and availability are subject to change or withdrawal without notice.

Corporate RE License #01796698

**JAY LUCHS**  
**CARLY GELLER**  
**NEWMARK**  
 PACIFIC

Vice Chairman  
 Director-Jay Luchs Group  
**JAYLUCHS.COM**

310-407-6585  
 310-593-0760

jay.luchs@nrmk.com  
 carly.geller@nrmk.com

CA RE Lic. #01260345  
 CA RE Lic. #02153582

jayluchs.com  
**For Lease**  
**310 407 6585**  
**Jay Luchs**  
 Los Angeles