



8552

MELROSE AVENUE

Jay Luchs
Vice Chairman
310-407-6585
jay.luchs@nrmk.com
CA RE Lic. #01260345
JAYLUCHS.COM

Carine Mamann
Executive Director
310-595-2235
carine.mamann@cushwake.com
CA RE Lic #01734150

Kazuko Morgan
Executive Vice Chairman
415-773-3546
kazuko.morgan@cushwake.com
CA RE Lic. #01070005

NEWMARK
 **CUSHMAN & WAKEFIELD**

PROPERTY DETAILS



ADDRESS

8552 Melrose Avenue
West Hollywood, CA 90069



USE

Retail



SIZE

±4,479 SF



RENT

Available upon Request



FRONTAGE

55 feet



PARKING

10 spaces (7 spaces on roof
and 3 spaces in rear)





HIGHLIGHTS



Located on the corner of Melrose Avenue and Westmount Drive



Surrounded by high-end retail and restaurants



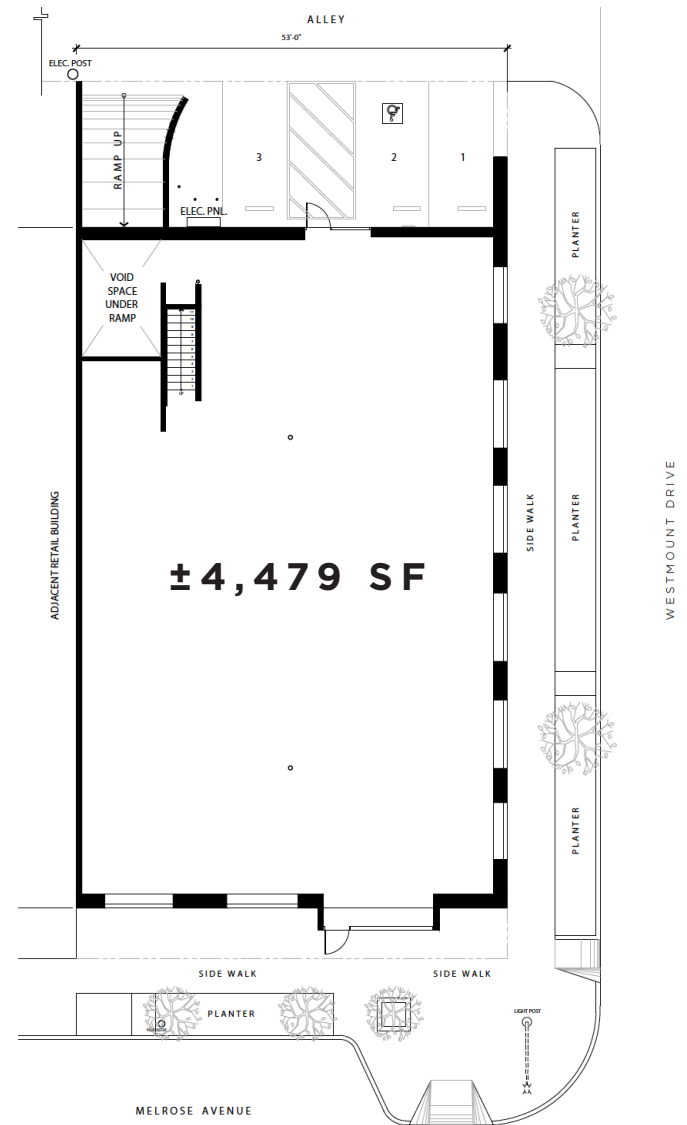
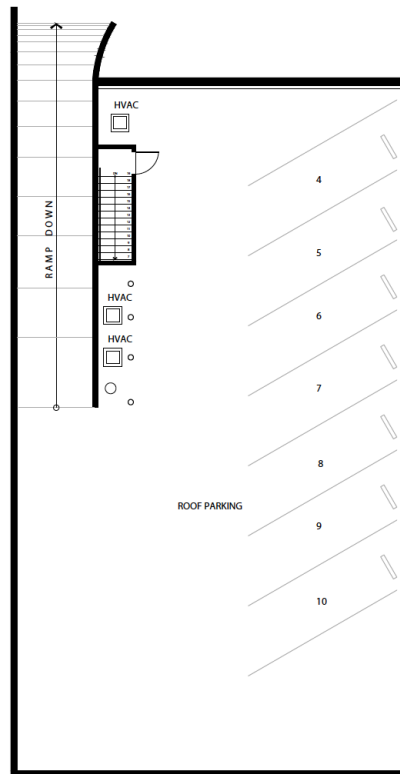
Ground floor retail with an open layout



Offers ample natural lighting



On-site parking accessible from Westmount Drive and ample street parking available



DEMOGRAPHICS



POPULATION

44,069
1 MILE

262,504
3 MILES

812,602
5 MILES



DAYTIME POPULATION

77,899
1 MILE

396,522
3 MILES

1,048,296
5 MILES



MEDIAN AGE

43
1 MILE

40
3 MILES

38
5 MILES



AVERAGE HOUSEHOLD INCOME

\$158,713
1 MILE

\$155,601
3 MILES

\$131,999
5 MILES





NEIGHBORING TENANTS



RH
RESTORATION HARDWARE



Urth Caffe
Exclusively Organic Coffee
29 Year Tradition



THE GREAT.



lululemon **athletica**



Rosalind



Glossier.



TEA
ALPINE TEA ROOM

@ Glossier Alley



The RealReal

AERIAL



8552
MELROSE
AVENUE

VINCE.

MARTYN
LAWRENCE
BULLARD

TEMPUR-PEDIC

RH
RESTORATION HARDWARE
flagship

zinqu

CATCH
saatva
THE
SHADE
STORE

PDC
PACIFIC DESIGN CENTER

DESIGN
WITHIN
REACH

PRETTYLITTLETHING
office

ami
alexandre mattiussi

THE GREAT.

Urth Cafe
Exclusively Organic Coffee
& Fine Teas



The information contained herein has been obtained from sources deemed reliable but has not been verified and no guarantee, warranty or representation, either express or implied, is made with respect to such information. Terms of sale or lease and availability are subject to change or withdrawal without notice.

Jay Luchs
Vice Chairman
310-407-6585
jay.luchs@nrmk.com
CA RE Lic. #01260345
JAYLUCHS.COM

Carine Mamann
Executive Director
310-595-2235
carine.mamann@cushwake.com
CA RE Lic #01734150

Kazuko Morgan
Executive Vice Chairman
415-773-3546
kazuko.morgan@cushwake.com
CA RE Lic. #01070005

