



8607  
MELROSE  
AVENUE

**Carine Mamann**

Vice Chairman

lic. 01734150

[carine.mamann@cushwake.com](mailto:carine.mamann@cushwake.com)

T. 310 595 2235

**Kazuko Morgan**

Executive Vice Chairman

lic. 01070005

[kazuko.morgan@cushwake.com](mailto:kazuko.morgan@cushwake.com)

T. 310 595 2235

**Jay Luchs**

Executive Vice Chairman

lic. 01260345

[jay.luchs@nmrk.com](mailto:jay.luchs@nmrk.com)

T. 310 407 6585





# PROPERTY DETAILS



## ADDRESS

8607 Melrose Avenue  
West Hollywood, CA 90069



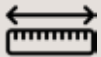
## USE

Retail / Restaurant



## SIZE

± 2,900 SF



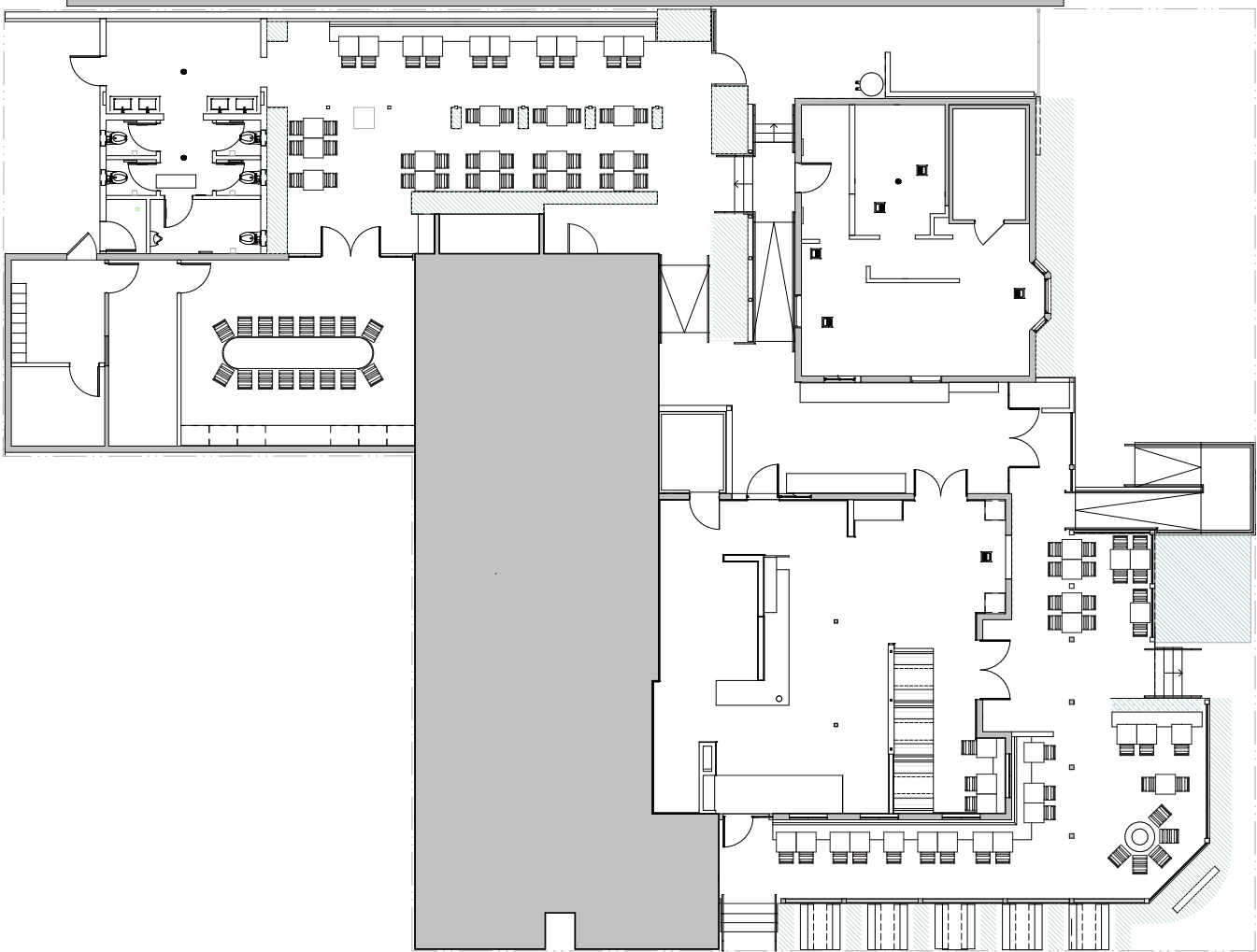
## FRONTAGE

± 126' on Melrose Avenue  
± 81' on Westbourne Drive



# FLOORPLAN

Ground                    ± 2,900 SF  
Outdoor Dining        ± 1,174 SF



WESTBOURNE DRIVE

MELROSE AVENUE



# INTERIOR









# PATIO





# DEMOGRAPHICS

	POPULATION		DAYTIME POPULATION		MEDIAN AGE		AVG. HOUSEHOLD INCOME
44,069 1 MILE		77,899 1 MILE		43 1 MILE		\$158,713 1 MILE	
262,504 3 MILE		396,522 3 MILE		40 3 MILE		\$155,601 3 MILE	
812,602 5 MILE		1,048,296 5 MILE		38 5 MILE		\$131,999 5 MILE	







*The information contained herein has been obtained from sources deemed reliable but has not been verified and no guarantee, warranty or representation, either express or implied, is made with respect to such information. Terms of sale or lease and availability are subject to change or withdrawal without notice.*

**Carine Mamann**  
Vice Chairman  
lic. 01734150  
carine.mamann@cushwake.com  
T. 310 595 2235

**Kazuko Morgan**  
Executive Vice Chairman  
lic. 01070005  
kazuko.morgan@cushwake.com  
T. 310 595 2235

**Jay Luchs**  
Executive Vice Chairman  
lic. 01260345  
jay.luchs@nmrk.com  
T. 310 407 6585

