



SUNSET PLAZA
8644 SUNSET BOULEVARD
WEST HOLLYWOOD, CA 90069

JAY LUCHS
CARLY GELLER
NEWMARK
PACIFIC

Executive Vice Chairman
Director
JAYLUCHS.COM

310-407-6585
310-593-0760

jay.luchs@nrmk.com
carly.geller@nrmk.com

CA RE Lic. #01260345
CA RE Lic. #02153582

jayluchs.com
For Lease
310 407 6585
Jay Luchs
Los Angeles



PROPERTY DETAILS

ADDRESS

8644 Sunset Boulevard
West Hollywood, CA 90069

USE

Retail

SIZE

Ground: ±939 SF
2nd Level: ±300 SF
Lower Level: ±888 SF
TOTAL: ±2,127 SF

RENT

Available upon Request

AVAILABLE

June 16, 2026

PARKING

Ample surface parking in
Sunset Plaza lots

HIGHLIGHTS

- Centrally located on Sunset Blvd
- Surrounded by retail and restaurants on the Sunset Strip
- High ceilings
- Store display window
- Hardwood flooring
- Wainscoting wall accent
- Restroom on lower level
- Recessed lighting

JAY LUCHS
CARLY GELLER
NEWMARK
PACIFIC

Executive Vice Chairman
Director
JAYLUCHS.COM

310-407-6585
310-593-0760

jay.luchs@nrmk.com
carly.geller@nrmk.com

CA RE Lic. #01260345
CA RE Lic. #02153582

jayluchs.com
For Lease
310 407 6585
Jay Luchs
Los Angeles

GROUND AND 2ND LEVEL PHOTOS



JAY LUCHS
CARLY GELLER
NEWMARK
PACIFIC

Executive Vice Chairman
Director
JAYLUCHS.COM

310-407-6585
310-593-0760

jay.luchs@nrmk.com
carly.geller@nrmk.com

CA RE Lic. #01260345
CA RE Lic. #02153582

jayluchs.com
For Lease
310 407 6585
Jay Luchs
Los Angeles

LOWER LEVEL AND PARKING PHOTOS



JAY LUCHS
CARLY GELLER
NEWMARK
PACIFIC

Executive Vice Chairman
Director
JAYLUCHS.COM

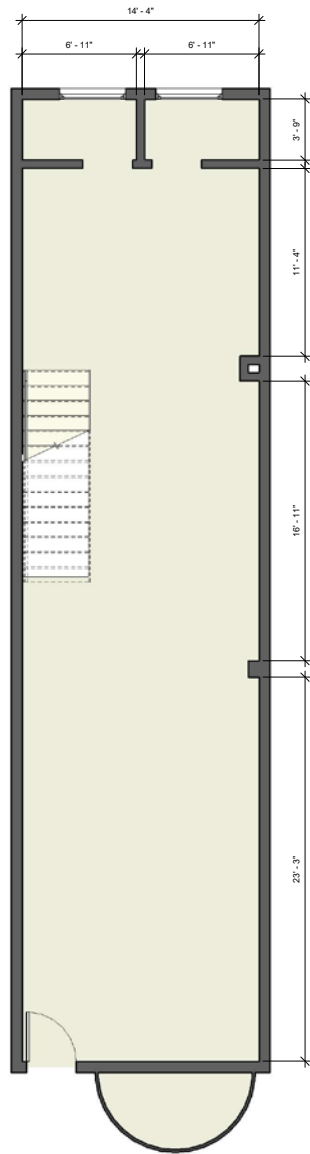
310-407-6585
310-593-0760

jay.luchs@nmrk.com
carly.geller@nmrk.com

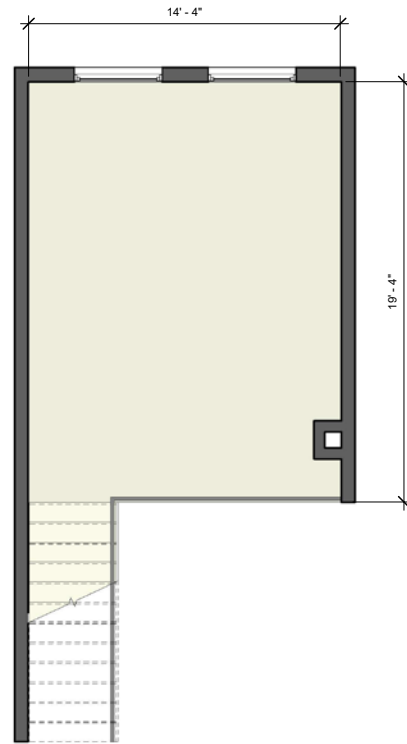
CA RE Lic. #01260345
CA RE Lic. #02153582

jayluchs.com
For Lease
310 407 6585
Jay Luchs
Los Angeles

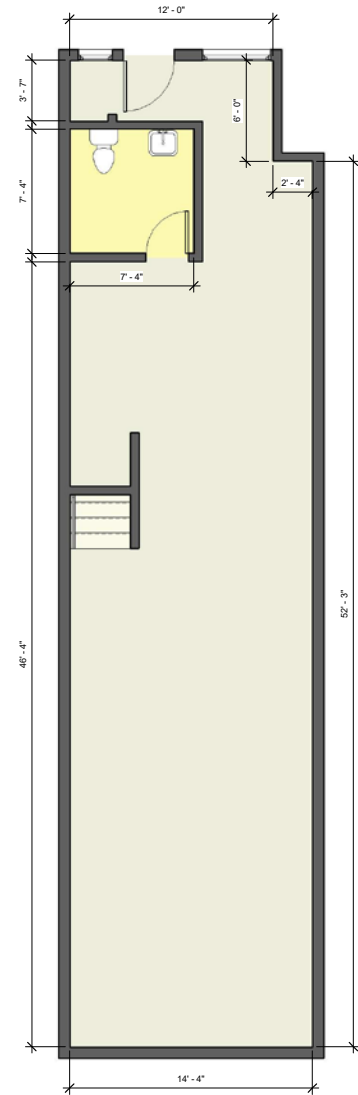
FLOOR PLAN



GROUND



2ND LEVEL



LOWER LEVEL

All measurements are approximate and not guaranteed. This illustration is provided for marketing and convenience only. All information should be verified independently.



SUNSET BOULEVARD CO-TENANCY

AUDEMARS PIGUET
Le Brasserie

BLANK STREET
(coming soon)



drybar

EQUINOX

F.P.JOURNE
Invenit et Fecit



(coming soon)

KITH

Mela drive-in

OLEHENRIKSEN

OLIVER PEOPLES
OCCASIONI



(coming soon)

SKIMS



Supreme

sweetgreen

JAY LUCHS
CARLY GELLER
NEWMARK
PACIFIC

Executive Vice Chairman
Director
JAYLUCHS.COM

310-407-6585
310-593-0760

jay.luchs@nrmk.com
carly.geller@nrmk.com

CA RE Lic. #01260345
CA RE Lic. #02153582

For Lease
310 407 6585
Jay Luchs
Los Angeles



BEVERLY CENTER

PIPC 40 YEARS PACIFIC DESIGN CENTER

SUNSET PLAZA
8644 SUNSET BOULEVARD
WEST HOLLYWOOD, CA 90069

Supreme

STATE SOCIAL HOUSE

the sunset
EQUINOX
sweetgreen
+one medical
NEXT HEALTH
SUNLIFE
SOULCYCLE
M&S MARTINEZ-MARTEL
Poke Dot

PURA VIDA
(coming soon)

OLIVER PEOPLES

BLANK STREET
(coming soon)

ALCHEMY 43

F.P.JOURNE
Invent et Feuil

BBC

BADGLEY MISCHKA

SUNSET PLAZA

drybar

RON DORFF

Mala drive-in

SKIMS

aka. WEST HOLLYWOOD
KITH
KITH TREATS

SUNSET BOULEVARD

SUSHI PARK
Joe's Pizza
Popeye
Starbucks

JAY LUCHS
CARLY GELLER
NEWMARK
PACIFIC

Executive Vice Chairman
Director
JAYLUCHS.COM

310-407-6585
310-593-0760

jay.luchs@nrmk.com
carly.geller@nrmk.com

CA RE Lic. #01260345
CA RE Lic. #02153582

For Lease
310 407 6585
Jay Luchs
Los Angeles

