

Sunset Plaza

8659 Sunset Boulevard
West Hollywood, CA 90069



*Digitally altered image

JAY LUCHS
CARLY GELLER
NEWMARK
PACIFIC

Executive Vice Chairman
Director
JAYLUCHS.COM

310-407-6585
310-593-0760

jay.luchs@nrmk.com
carly.geller@nrmk.com

CA RE Lic. #01260345
CA RE Lic. #02153582

jayluchs.com
For Lease
310 407 6585
Jay Luchs
Los Angeles

8659 Sunset Boulevard

West Hollywood, CA 90069

Located in the heart of Sunset Plaza, one of West Hollywood's most prestigious and high-traffic retail corridors, this approximately 988 square foot retail space offers a rare opportunity to establish or expand a brand presence along the iconic Sunset Strip. Surrounded by an affluent, design-conscious clientele and anchored by acclaimed restaurants, boutiques, and destination brands, the property benefits from exceptional street visibility and consistent foot traffic from both local residents and international visitors.



Digitally altered image

Use

Retail

Size

Ground floor: ±737 SF
Mezzanine: ±251 SF
Total: ±988 SF

Rent

Available upon Request

Available

Within 60 days

JAY LUCHS
CARLY GELLER
NEWMARK
PACIFIC

Executive Vice Chairman
Director
JAYLUCHS.COM

310-407-6585
310-593-0760

jay.luchs@nrmk.com
carly.geller@nrmk.com

CA RE Lic. #01260345
CA RE Lic. #02153582

jayluchs.com
For Lease
310 407 6585
Jay Luchs
Los Angeles

8659 Sunset Boulevard

West Hollywood, CA 90069

Highlights

- Expansive display window and recessed lighting provide bright, ample lighting throughout
- High ceilings enhance volume and merchandising flexibility
- Street-level retail adjacent to The Butcher, The Baker, The Cappuccino Maker (BBCM) and Samira 13
- Over 600 on-site surface parking spaces available
- Prime Sunset Strip location with traffic count of approximately 48,695 cars per day
- Consistent daytime and evening foot traffic



Traffic Count: TrafficMetrix, Costar 2025

JAY LUCHS
CARLY GELLER
NEWMARK
PACIFIC

Executive Vice Chairman
Director
JAYLUCHS.COM

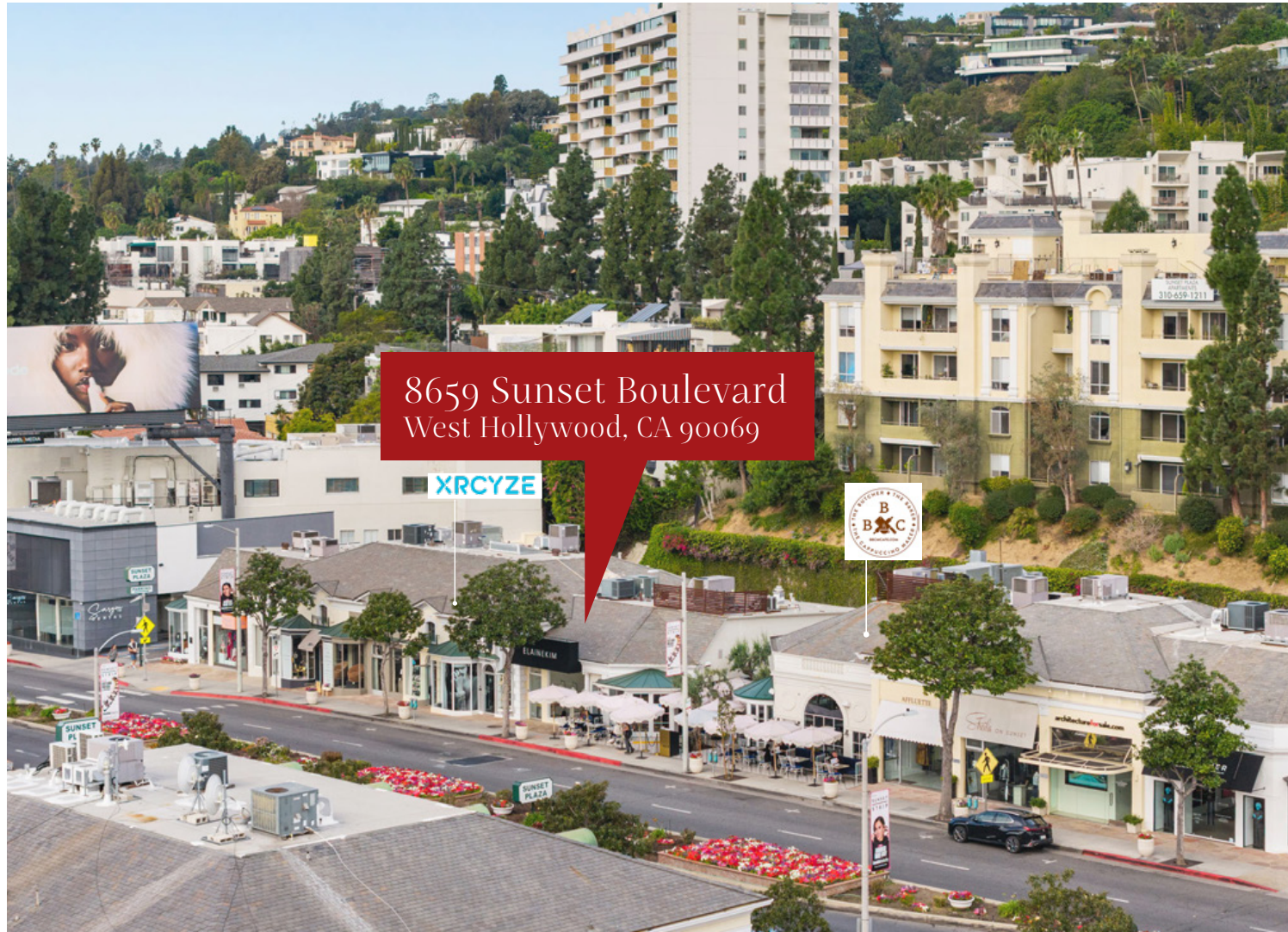
310-407-6585
310-593-0760

jay.luchs@nrmk.com
carly.geller@nrmk.com

CA RE Lic. #01260345
CA RE Lic. #02153582

jayluchs.com
For Lease
310 407 6585
Jay Luchs
Los Angeles

Sunset Boulevard Co-Tenancy



JAY LUCHS
CARLY GELLER
NEWMARK
PACIFIC

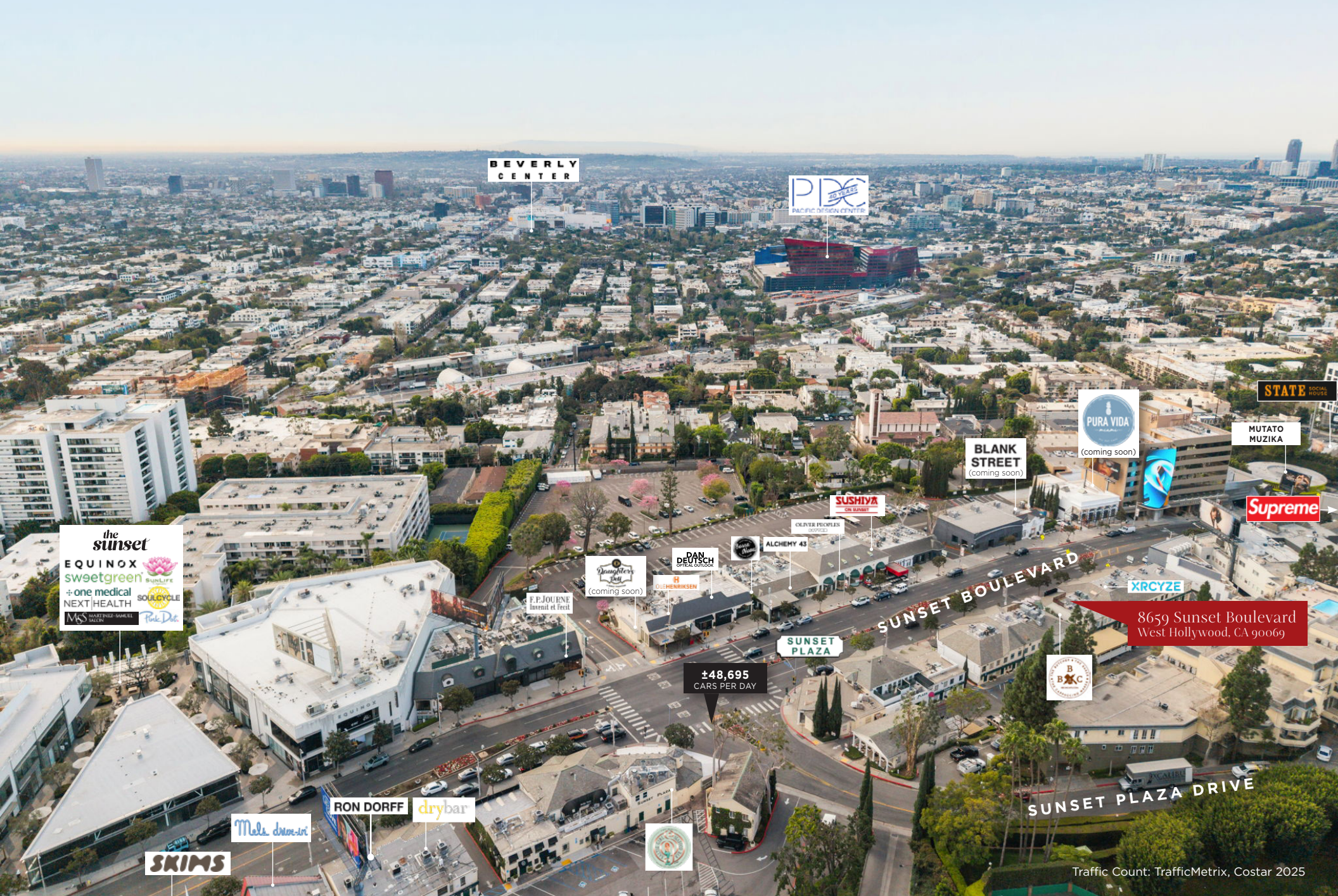
Executive Vice Chairman
Director
JAYLUCHS.COM

310-407-6585
310-593-0760

jay.luchs@nrmk.com
carly.geller@nrmk.com

CA RE Lic. #01260345
CA RE Lic. #02153582

jayluchs.com
For Lease
310 407 6585
Jay Luchs
Los Angeles



BEVERLY CENTER

PRO
PACIFIC DESIGN CENTER

STATE SOCIAL HOUSING

PURA VIDA
(coming soon)

MUTATO MUZIKA

BLANK STREET
(coming soon)

Supreme

the sunset
EQUINOX
sweetgreen
+ one medical
NEXT HEALTH
MS MARTINE-SAMER
SILVER
SoulCycle
Pink Dot

SUSHIYA
ON SUNSET

OLIVER PEOPLES
SHOPES

ALCHEMY 43

Daughter's
(coming soon)

DAN DEUTSCH
CATERING & COFFEE

DIEHNRICKSEN

F.F. JOUENE
l'essence et le feu

SUNSET PLAZA

±48,695
CARS PER DAY

XRCYZE

8659 Sunset Boulevard
West Hollywood, CA 90069

B
BXC

RON DORFF
drybar

Mela drive-in

SKIMS

SUNSET PLAZA DRIVE

Traffic Count: TrafficMetrix, Costar 2025

JAY LUCHS
CARLY GELLER
NEWMARK
PACIFIC

Executive Vice Chairman
Director
JAYLUCHS.COM

310-407-6585
310-593-0760

jay.luchs@nrmk.com
carly.geller@nrmk.com

CA RE Lic. #01260345
CA RE Lic. #02153582

For Lease
310 407 6585
Jay Luchs
Los Angeles

