



8710 W. SUNSET BOULEVARD WEST HOLLYWOOD, CALIFORNIA

JAY LUCHS Executive Vice Chairman 310-407-6585 jay.luchs@nmrk.com CA RE Lic. #01260345 JAYLUCHS.COM

NEWMARK
PACIFIC

jayluchs.com
For Lease
310 407 6585
Jay Luchs
Los Angeles

ADDRESS

8710 W. Sunset Boulevard
West Hollywood, CA 90069

USE

Retail

SIZE

Ground: ±2,023 SF

Patio: ±364 SF

Lower Level: ±836 SF

TOTAL: ±3,223 SF

RENT

Available upon Request

PARKING

Sunset Plaza parking
available in rear
surface lot



JAY LUCHS Executive Vice Chairman 310-407-6585 jay.luchs@nrmk.com CA RE Lic. #01260345 **JAYLUCHS.COM**

NEWMARK
PACIFIC

jayluchs.com
For Lease
310 407 6585
Jay Luchs
Los Angeles

HIGHLIGHTS

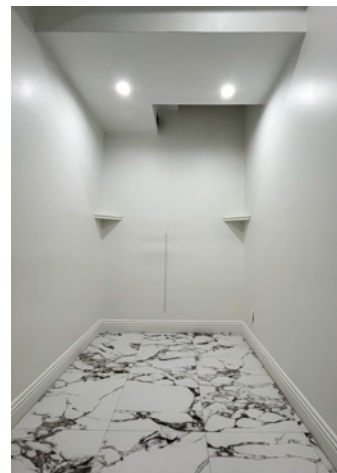
- Centrally located on the Sunset Strip in Sunset Plaza
- Bright lobby area with large storefront windows
- Marble cash wrap counter
- High ceilings and wooden beams
- Built-in shelving and displays
- Recessed and track lighting
- Arched doorways
- Fireplace
- Accented wallpaper
- Multiple sink fixtures
- Restroom
- Private patio area with covered canopy
- Storage area



JAY LUCHS Executive Vice Chairman 310-407-6585 jay.luchs@nrmk.com CA RE Lic. #01260345 JAYLUCHS.COM

NEWMARK
PACIFIC

jayluchs.com
For Lease
310 407 6585
Jay Luchs
Los Angeles



JAY LUCHS Executive Vice Chairman 310-407-6585 jay.luchs@nrmk.com CA RE Lic. #01260345 **JAYLUCHS.COM**

NEWMARK
PACIFIC

jayluchs.com
For Lease
310 407 6585
Jay Luchs
Los Angeles



SUNSET PLAZA

Tenants:

ALCHEMY 43

BOOT STAR
LOS ANGELES

drybar

OLEHENRIKSEN

face / body
spa
West Hollywood / Sunset Plaza



SUSHIYA
ON SUNSET

ZADIG & VOLTAIRE

Andrea's Fashion
Charlie Choukair
Coyne on Sunset
Cristallini
Cupid Lips
Elaine Kim
Entourage Barber Shop
Fast and Best Alteration
& Shoe Repair
Golden Ocean Spa

Hot Pilates
Jessica's Nail Clinic
Koji Toyoda Salon
Meta Healing Center
Osklo Inc
Queen B Salon And Spa
Reformer Pilates
Revolver Gallery
Ron Dorff
Rudy's Tailoring

Samira 13
Sargon Dental
Serenity on Sunset
Sheila on Sunset
Sunset Kids
The Oppenheim Group
White Glove Estates
XRCYZE
and more



F.P.JOURNE
Invenit et Fecit

OLIVER PEOPLES



BADGLEY MISCHEKA

DAN DEUTSCH
OPTICAL OUTLOOK

H. LORENZO

JAY LUCHS Executive Vice Chairman 310-407-6585 jay.luchs@nmrk.com CA RE Lic. #01260345 JAYLUCHS.COM

NEWMARK
PACIFIC

For Lease
310 407 6585
Jay Luchs
Los Angeles



The information contained herein has been obtained from sources deemed reliable but has not been verified and no guarantee, warranty or representation, either express or implied, is made with respect to such information. Terms of sale or lease and availability are subject to change or withdrawal without notice.

Corporate RE License #01796698