

8888 WASHINGTON BOULEVARD  
CULVER CITY, CALIFORNIA 90232

SUBLEASE AVAILABLE

ATRIO

NEWMARK

cresa

**JAY LUCHS**  
Vice Chairman  
t 310-407-6585  
jay.luchs@nrmk.com  
CA RE Lic. #01260345  
[jayluchs.com](http://jayluchs.com)

**DAVID G. KUTZER**  
Principal  
t 213-430-2444  
dkutzer@cresa.com  
CA RE Lic. #01101412





# PROPERTY SUMMARY

## ADDRESS

8888 Washington Boulevard, Suite 100  
Culver City, CA 90232

## USE

Retail

## SIZE

Approximately 2,400 SF

## RENT

Available upon Request

## SUBLEASE TERM

Through May 2027

**NEWMARK**

**cresa**

**JAY LUCHS**  
Vice Chairman  
t 310-407-6585  
jay.luchs@nrmrk.com  
CA RE Lic. #01260345  
**jayluchs.com**

**DAVID G. KUTZER**  
Principal  
t 213-430-2444  
dkutzer@cresa.com  
CA RE Lic. #01101412



## HIGHLIGHTS

- High-end finishes and architectural features
- Shelving and display areas
- Valet and self-parking available at the Platform
- Neighboring restaurants and retail shops include: JULIET, Bianca Bakery, Blue Bottle Coffee, Sweetgreen, Loqui, Aesop, Van Leeuwen Ice Cream, Boba Guys, Catbird, Margot, Reformation, and more



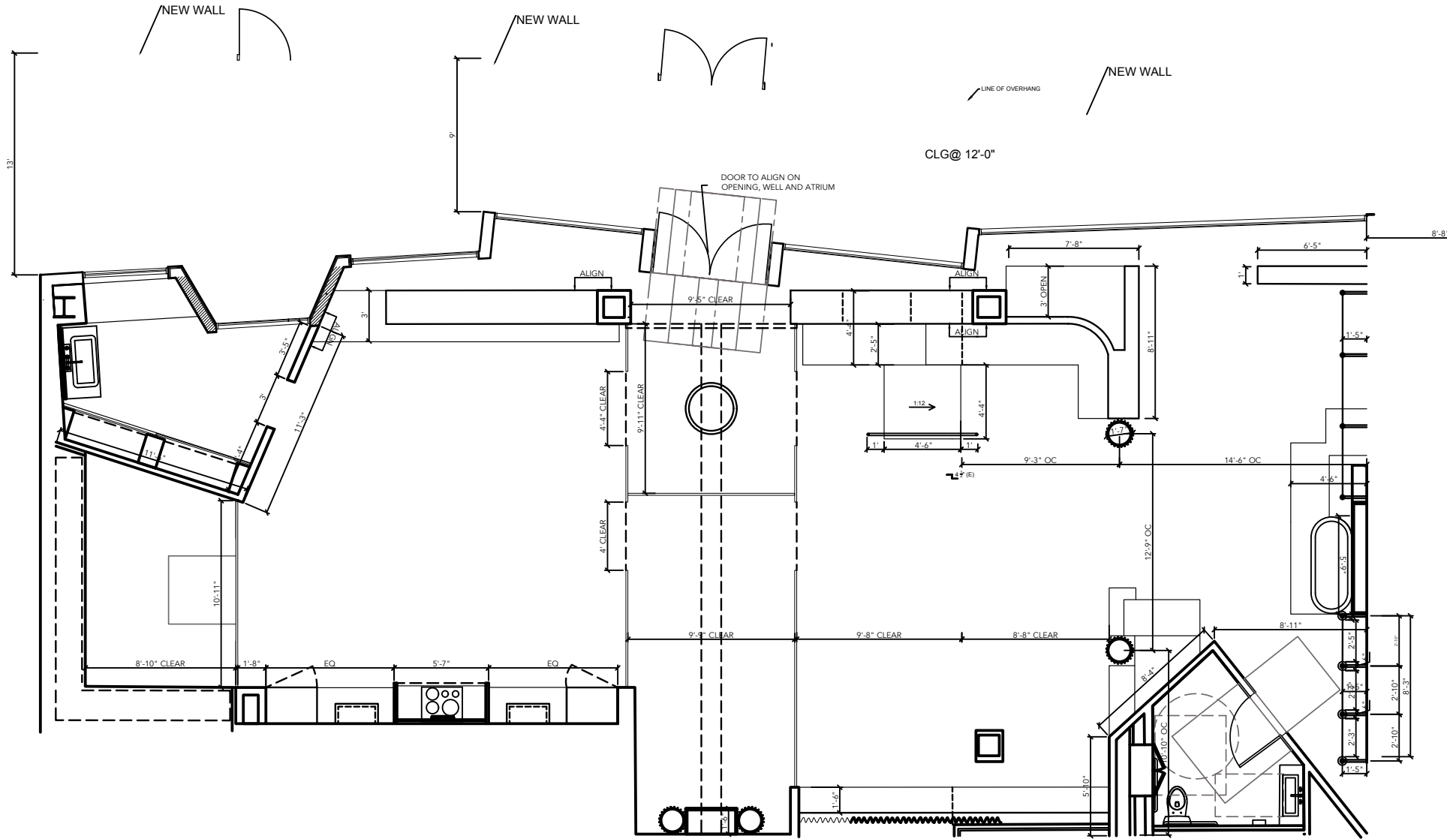
**NEWMARK**

**cresa**

**JAY LUCHS**  
Vice Chairman  
t 310-407-6585  
jay.luchs@nrmk.com  
CA RE Lic. #01260345  
[jayluchs.com](http://jayluchs.com)

**DAVID G. KUTZER**  
Principal  
t 213-430-2444  
dkutzer@cresa.com  
CA RE Lic. #01101412

# FLOOR PLAN



DIMENSION PLAN 1  
SCALE 3/8"=1'-0"

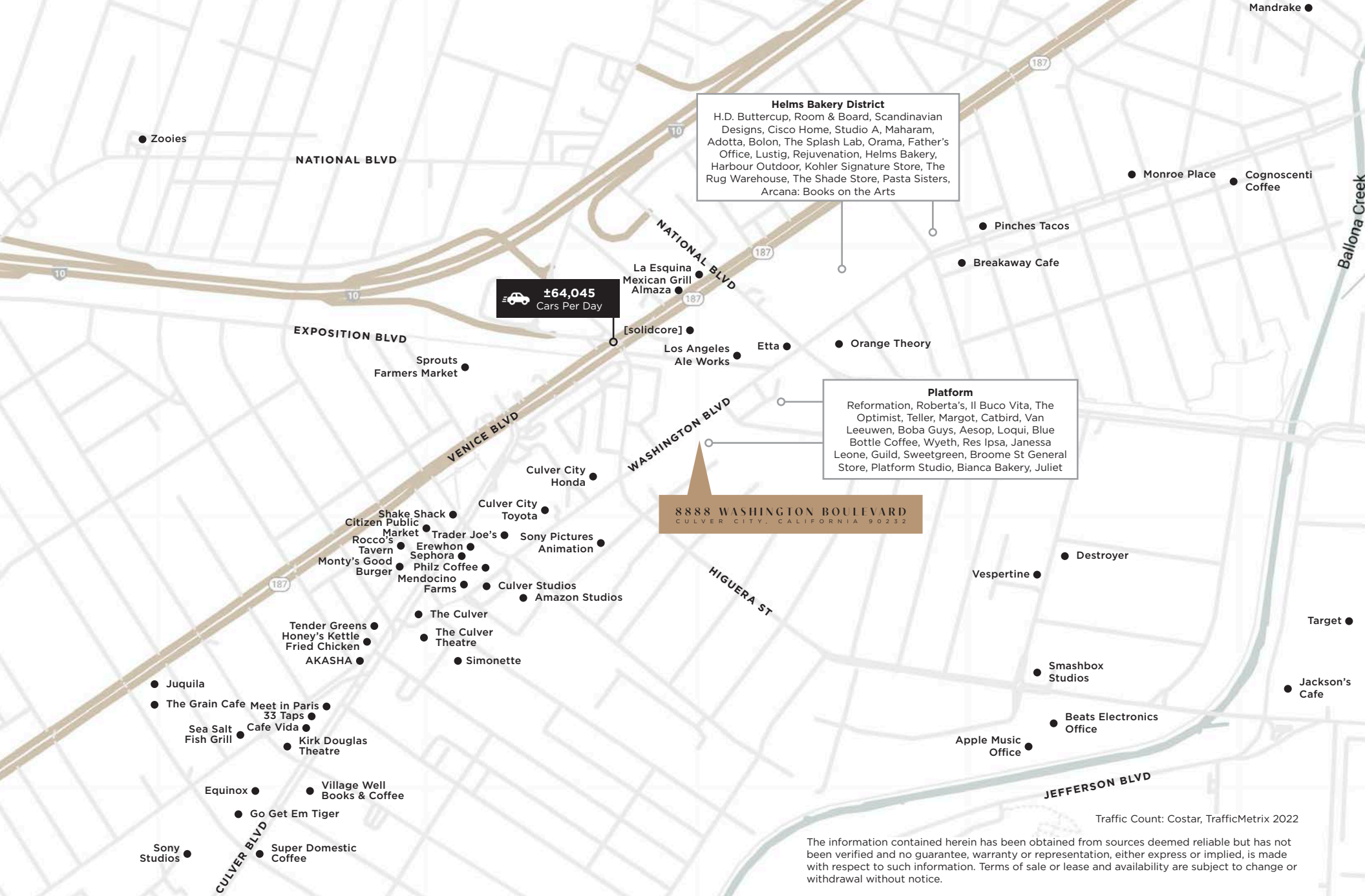
NEWMARK

cresa

**JAY LUCHS**  
Vice Chairman  
t 310-407-6585  
jay.luchs@nmrk.com  
CA RE Lic. #01260345  
jayluchs.com

**DAVID G. KUTZER**  
Principal  
t 213-430-2444  
dkutzer@cresa.com  
CA RE Lic. #01101412





Traffic Count: Costar, TrafficMetrix 2022

The information contained herein has been obtained from sources deemed reliable but has not been verified and no guarantee, warranty or representation, either express or implied, is made with respect to such information. Terms of sale or lease and availability are subject to change or withdrawal without notice.

**NEWMARK**

Corporate RE Lic. #01355491

**cresa**

Corporate RE Lic. #02037176

**JAY LUCHS**  
Vice Chairman  
t 310-407-6585  
jay.luchs@nmrk.com  
CA RE Lic. #01260345  
jayluchs.com

**DAVID G. KUTZER**  
Principal  
t 213-430-2444  
dkutzer@cresa.com  
CA RE Lic. #01101412